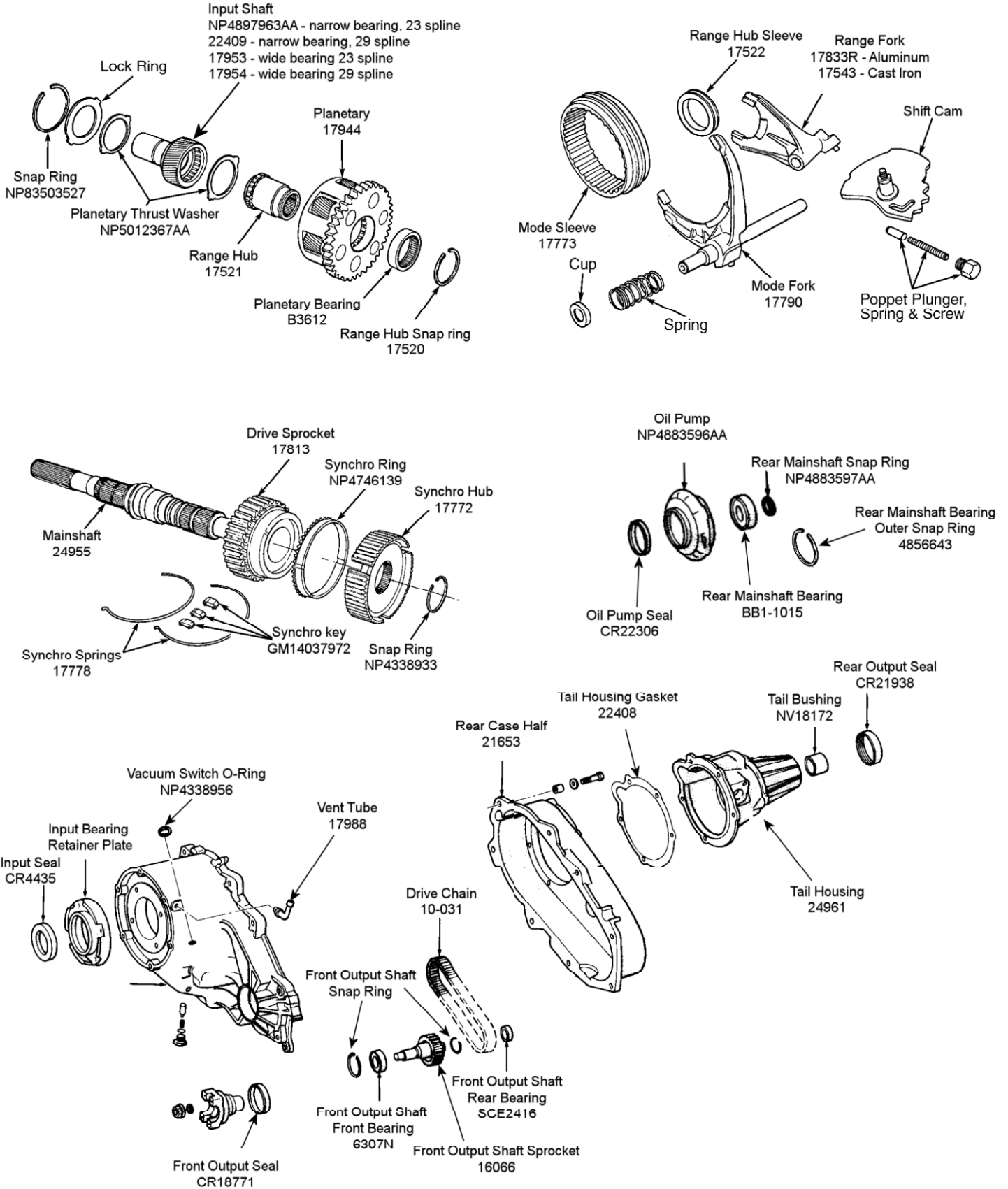


- |                                  |                                     |                                   |                                |
|----------------------------------|-------------------------------------|-----------------------------------|--------------------------------|
| 1. Oil Seal                      | 21. Front Output Shaft              | 41. Snap Ring                     | 61. Front Output Shaft Bearing |
| 2. Extension Housing Bushing     | 22. Driven Sprocket                 | 42. Oil Seal                      | 62. Annulus Gear               |
| 3. Bolt                          | 23. Snap Ring                       | 43. Screw                         | 63. Nut                        |
| 4. Extension Housing             | 24. Front Output Shaft Rear Bearing | 44. Input Bearing Retainer        | 64. Washer                     |
| 5. Snap Ring                     | 25. Magnetic Washer                 | 45. Front Case                    | 65. Lever                      |
| 6. Output Shaft Bearing          | 26. Connector                       | 46. 4WD Indicator Switch          | 66. Retainer                   |
| 7. Bolt                          | 27. Washer                          | 47. Seal                          | 67. Oil Seal                   |
| 8. Rear Bearing Retainer Housing | 28. Synchronizer Stop Ring          | 48. Shift Rail                    | 68. Plug                       |
| 9. Speedometer Sensor            | 29. Synchronizer Sleeve             | 49. Mode Shift Fork Pad           | 69. "O" Ring                   |
| 10. Snap Ring                    | 30. Synchronizer Insert             | 50. Range Shift Fork Pad          | 70. Poppet Plunger             |
| 11. Speedometer Gear             | 31. Synchronizer Hub                | 51. Range Fork                    | 71. Poppet Spring              |
| 12. Oil Pump                     | 32. Synchronizer Insert Spring      | 52. Mode Fork Spring              | 72. Oil Seal                   |
| 13. Oil Pump Seal                | 33. Dowel                           | 53. Fork Pin                      | 73. Oil Deflector              |
| 14. "O" Ring                     | 34. Range Shift Hub                 | 54. Mode Fork                     | 74. Companion Flange           |
| 15. Fill Plug                    | 35. Screen                          | 55. Range Sector                  | 75. Washer                     |
| 16. Bolt                         | 36. Planet Carrier                  | 56. Bushing                       | 76. Washer                     |
| 17. Rear Case                    | 37. Input Gear Thrust Washer        | 57. Range Fork Pin                | 77. Nut                        |
| 18. Oil Pick-Up Tube             | 38. Input Gear                      | 58. Drive Chain                   | 78. Carrier Lock Ring          |
| 19. Mainshaft                    | 39. Lock Ring                       | 59. Planetary Gear Retaining Ring | 79. Screw                      |
| 20. Drive Sprocket               | 40. Input Gear Bearing              | 60. Snap Ring                     |                                |

# 1997-02 Dodge 241 DHD



# BK241A Kit Contents

OUR ITEM NR	QTY	MFG ITEM NR	MFG DESC
207	2	207	FRT OUTPUT FRT, REAR OUTPUT
6010N	1	6010-N	INPUT BEARING
AS109	1	AS109	OIL PICK UP TUBE O-RING
DB73167	1	DB73167	POCKET BEARING, BIG DODGE
HK5020	2	HK5020	SPROCKET BEARINGS
NP4167969	4	4167969	FORK INSERT
NP4219073	1	4219073	FORK INSERT
NP4338376	1	4338376	FORK INSERT
NP5012367AA	2	5012367AA	PLANET WASHER
NP83503507	1	DB59856	POCKET BEARING
SCE2416	1	SCE2416	FRONT OUTPUT REAR BEARING
TSK241	1	TSK-241	GASKET & SEAL KIT