



ZROADZ

DYNAMIC LED MOUNTING SOLUTIONS



2017 FORD RAPTOR

Z385662 / Z385662-KIT

REAR BUMPER LED LIGHT MOUNTS

PARTS ARE PATENT PENDING. ALL RIGHTS RESERVED - COPYRIGHT ©2016 - ZROADZ LED, INC.

PARTS INCLUDED

- (1) Driver Light Mount Bracket
- (1) Passenger Light Mount Bracket



Kit -
w/ (2) 6" LED
Light Bars



Mounting
Brackets Only

* Simulated Rendering, Not actual parts.

LED LIGHTS INCLUDED

Z385662 - No LED Lights Included

Z385662-KIT - (2) ZROADZ 6" LED Light Bars

* LED Lights include a separate hardware kit.

HARDWARE INCLUDED

Z385662

- (1) - Left Side Rear Hanging Bracket - L
- (1) - Right Side Rear Hanging Bracket - R
- (1) - Universal Left Side Bracket LED Cradle
- (1) - Universal Right Side Bracket LED Cradle
- (4) - M8 x 16mm Button Head Allen Cap Stainless Steel Bolts
- (4) - M8 Stainless Steel Hex Nuts
- (4) - 5/16" Flat Washers Black

Z385662-KIT

- (1) - Left Side Rear Hanging Bracket - L
- (1) - Right Side Rear Hanging Bracket - R (1) - Universal Left Side Bracket LED Cradle (1) - Universal Right Side Bracket LED Cradle (1) - Torx Bit T-40
- (4) - M8 Tamper Proof Bolt
- (4) - M8 x w Button Head Allen Cap Stainless Steel Bolts

TOOLS REQUIRED

- Various Socket Set
- Various Wrenches
- Ratchet Tool
- Ratchet Extensions

INSTALLATION GUIDE

START HERE

PLEASE READ AND UNDERSTAND ALL INSTRUCTIONS BEFORE INSTALLATION. Auto makers offer varied models to each vehicle and occasionally manufacture more than one body style of the same model.

* APPLICATION MODELS VARY. WE RECOMMEND TO VERIFY FITMENT BEFORE BEGINNING INSTALLATION PROCESS.
* IMAGES FEATURED IN THE INSTRUCTION DOCUMENTS MAY NOT ALWAYS EXACTLY MATCH YOUR MODEL OR PART.

BEFORE YOU BEGIN

START HERE: Turn off engine, chalk tires with stop block, open the hood and disconnect the battery.

LED LIGHT BRACKET INSTALLATION

STEP 1

1) From under the rear bumper, take your ZROADZ LED light mount and mock it up into position. This will help you gain familiarity with the mounting orientation. Identify these two bolts that hang the rear bumper on either vehicle corner.



FIG 1

SEE FIGURES 2 & 3

STEP 2

2) Using a Socket, or Wrench, loosen and remove the two Nuts that secure the Factory Bumper to Frame.

Repeat on opposite side. Save Nuts for Re-Installation.

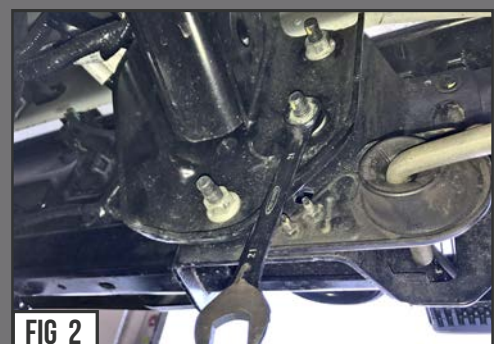


FIG 2



ZROADZ

DYNAMIC LED MOUNTING SOLUTIONS

LED LIGHT BRACKET INSTALLATION - CONTINUED

PARTS ARE PATENT PENDING. ALL RIGHTS RESERVED - COPYRIGHT ©2016 - ZROADZ LED, INC.



FIG 3

STEP 3

SEE FIGURES 3 & 4

3) Prop the LED bracket mounts into place by putting into position and aligned over the Factory Bolt Threads. Secure ZROADZ Bracket by inserting Factory Nuts back over and onto their Bolt Threads.

Repeat on opposite side of vehicle.



FIG 4

STEP 4

SEE FIGURES 5 - 8

4) Using your best judgement, move the adjustable bracket piece into your preferred position, and finally tighten everything up for now.

Look over your work and verify that the correct bracket has been mounted on the appropriate side of vehicle.



FIG 5

STEP 5

SEE FIGURE 5

Wire LED Light with a ZROADZ optional wiring harness kit (part# Z390020S-A) or by utilizing a compatible custom wiring harness. ZROADZ recommends LED Lights be wired with ZROADZ harness kit (part# Z390020S-A).

STEP 6 ADJUSTMENT TIPS

6) To adjust the angle of your Light Bar, rotate the LED(s) to adjust the angles till your desired light pattern is reached. You may then tighten the hardware and also mounting bracket and secure everything into place. Be careful not to over tighten the mounting hardware.

It is best to adjust the angle with the vehicle on level ground with lights facing a wall, garage door or other solid barrier. We recommend checking from a distance of 25'. Your installation is now completed.

FINAL INSTALLATION

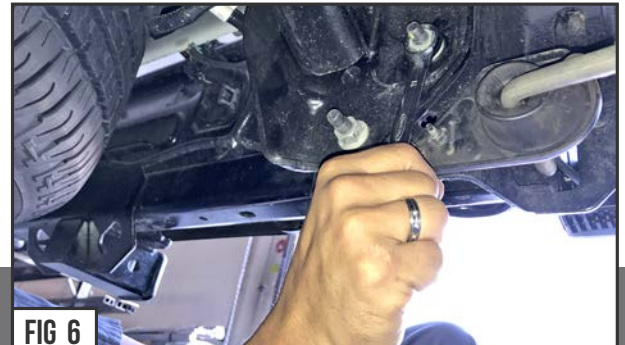


FIG 6



FIG 7



FIG 8

LED LIGHT BRACKET INSTALLATION - PROCESS COMPLETE