



#T1251 Installation Instructions 2005-2010 Toyota Tacoma 4wd 2.5" [Strut Spacer Lift](#)

Read and understand all instructions and warnings prior to installation of product and operation of vehicle.

Zone Offroad Products recommends this system be installed by a professional technician. In addition to these instructions, professional knowledge of disassembly/ reassembly procedures and post installation checks must be known. Minimum tool requirements include the following: Assorted metric and standard wrenches, hammer, hydraulic floor jack and a set of jack stands. See the "Special Tools Required" section for additional tools needed to complete this installation properly and safely.

» **PRODUCT SAFETY WARNING**

Certain Zone Suspension Products are intended to improve off-road performance. Modifying your vehicle for off-road use may result in the vehicle handling differently than a factory equipped vehicle. Extreme care must be used to prevent loss of control or vehicle rollover. Failure to drive your modified vehicle safely may result in serious injury or death. Zone Offroad Products does not recommend the combined use of suspension lifts, body lifts, or other lifting devices.

You should never operate your modified vehicle under the influence of alcohol or drugs. Always drive your modified vehicle at reduced speeds to ensure your ability to control your vehicle under all driving conditions. Always wear your seat belt.

Difficulty Level

easy 1 **2** 3 4 5 difficult

Estimated installation: 1-2 hours

Special Tools Required

None

Tire/Wheel Fitment

265/75R17 Tire

5-1/4" Backspace. Wheel

» **PRE-INSTALLATION NOTES**

1. Special literature required: OE Service Manual for model/year of vehicle. Refer to manual for proper disassembly/reassembly procedures of OE and related components.
2. Adhere to recommendations when replacement fasteners, retainers and keepers are called out in the OE manual.
3. Larger rim and tire combinations may increase leverage on suspension, steering, and related components. When selecting combinations larger than OE, consider the additional stress you could be inducing on the OE and related components.
4. Post suspension system vehicles may experience drive line vibrations. Angles may require tuning, slider on shaft may require replacement, shafts may need to be lengthened or trued, and U-joints may need to be replaced.
5. Secure and properly block vehicle prior to installation of Zone Offroad Products. Always wear safety glasses when using power tools.
6. If installation is to be performed without a hoist, Zone Offroad Products recommends rear alterations first.
7. Due to payload options and initial ride height variances, the amount of lift is a base figure. Final ride height dimensions may vary in accordance to original vehicle attitude. Always measure the attitude prior to beginning installation.

Kit Contents

Qty	Part
2	Front Strut Spacer
1	Bolt Pack - Front - #629



INSTALLATION INSTRUCTIONS

» FRONT INSTALLATION

1. Park the vehicle on a clean, flat surface and block the rear wheels for safety.
2. Raise the front of the vehicle and support with jack stands under the frame rails, behind the suspension.
3. Remove the front wheels.
4. Locate the lower alignment cam bolts. **Figure 1** Loosen the bolts (2 per arm - 4 total). This will allow the lower control arm to swing down and out of the way when the strut is disconnected.



Figure 1

5. Remove the 2 lower ball joint mount bolts from the steering knuckle. **Figure 2** Save bolts.
6. Remove the lower strut mount bolt at the lower control arm. **Figure 2** Swing the lower control arm down and out of the way. Save hardware.

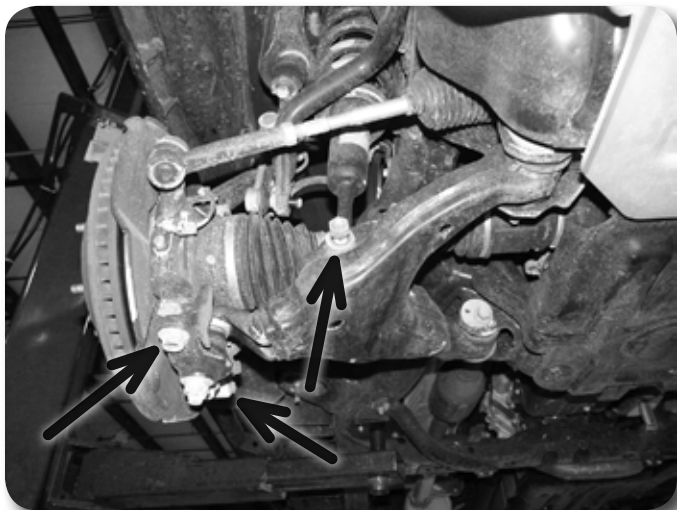


Figure 2

7. Locate the 3 upper strut mount nuts. **Figure 3** Remove the nuts and remove the strut from the vehicle. Do not remove the center strut rod nut. It is under extreme pressure. Save nuts.

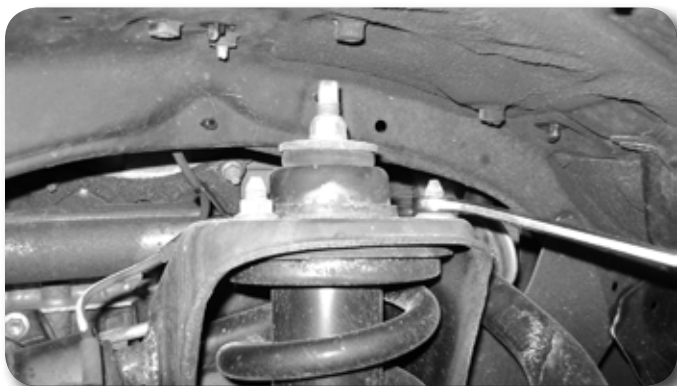


Figure 3

8. The tips of the factory mounting studs need to be trimmed off approximately 1/8". This can be done with a grinder or cut-off tool. Trimming the studs will ensure the ends set below the top surface of the new spacer once it is installed. **Figure 4A/B**

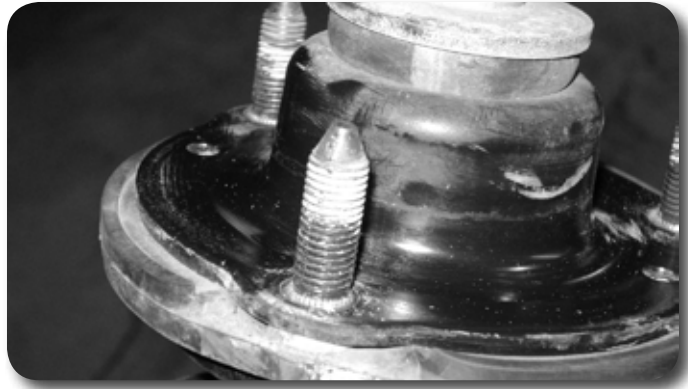


Figure 4A

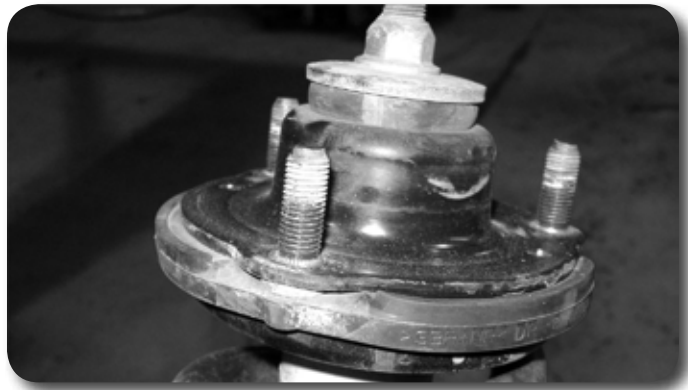


Figure 4B

Step 9 Note

Mounting hardware is located in hardware pack #629.

9. Locate one of the supplied strut spacers and install on the factory upper strut mount studs. Fasten with the original nuts and tighten securely (Approx. 45 ft-lbs). Figure 5

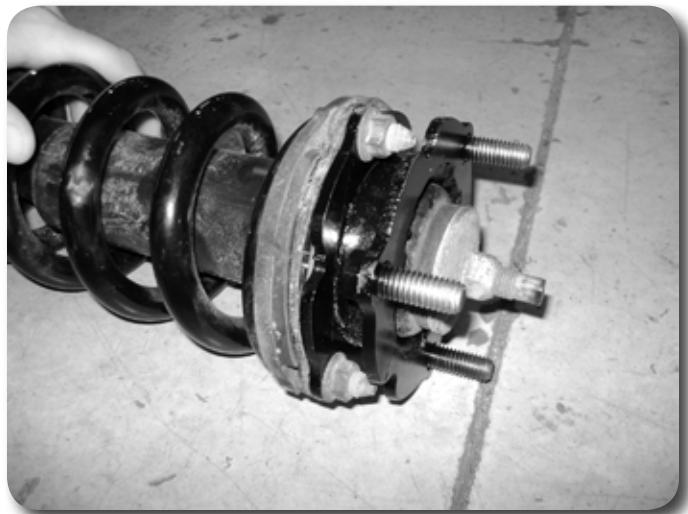


Figure 5

10. Install the strut assembly back in the vehicle and fasten to the original frame mount with the provided 10mm nuts and washers. Figure 6 Torque nuts to 45 ft-lbs.

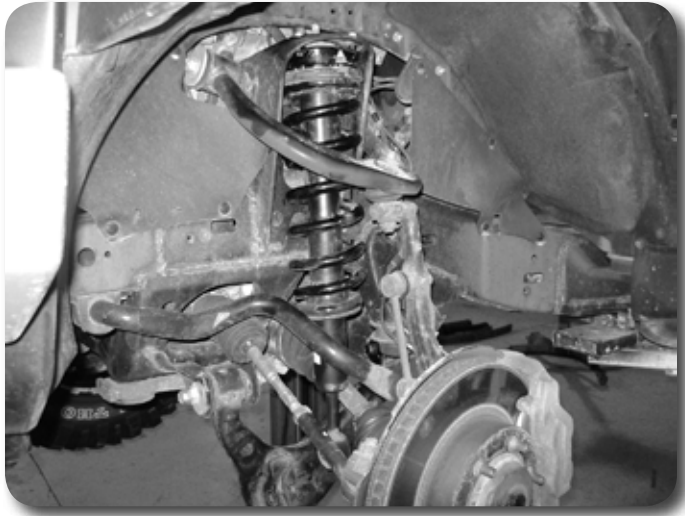


Figure 6

11. Swing the lower control arm up and fasten to the strut with the original factory hardware. Leave hardware loose.
12. Repeat the strut removal/assembly on the opposite side of the vehicle.
13. With both struts reattached to the frame, reconnect the lower control arm/ball joint assembly to the steering knuckles with the factory bolts. A floor jack can be used to raise the lower control arm. Use Loctite on the bolt threads and torque bolts to 110 ft-lbs.
14. With both sides assembled, install the wheels and lower the vehicle to the ground. Torque lug nuts to 80 ft-lbs.
15. Bounce the front of the vehicle to settle the suspension. Torque the lower control arm cam bolts to 100 ft-lbs. Torque the lower strut bolts to 100 ft-lbs.

»» **POST-INSTALLATION**

1. Check all hardware for proper torque.
2. The vehicle will need a complete front end alignment.
3. Adjust headlights.
4. Check hardware after 500 miles.

Post-Installation Warnings

1. Check all fasteners for proper torque. Check to ensure for adequate clearance between all rotating, mobile, fixed, and heated members. Verify clearance between exhaust and brake lines, fuel lines, fuel tank, floor boards and wiring harness. Check steering gear for clearance. Test and inspect brake system.
2. Perform steering sweep to ensure front brake hoses have adequate slack and do not contact any rotating, mobile or heated members. Inspect rear brake hoses at full extension for adequate slack. Failure to perform hose check/ replacement may result in component failure.
3. Perform head light check and adjustment.
4. Re-torque all fasteners after 500 miles. Always inspect fasteners and components during routine servicing.