



D9151 Installation Instructions **2006-2008 Dodge Ram 1500** **1.5" Body Lift**

Read and understand all instructions and warnings prior to installation of product and operation of vehicle.

Zone Offroad Products recommends this system be installed by a professional technician. In addition to these instructions, professional knowledge of disassembly/ reassembly procedures and post installation checks must be known. Minimum tool requirements include the following: Assorted metric and standard wrenches, hammer, hydraulic floor jack and a set of jack stands. See the "Special Tools Required" section for additional tools needed to complete this installation properly and safely.

» PRODUCT SAFETY WARNING

Certain Zone Suspension Products are intended to improve off-road performance. Modifying your vehicle for off-road use may result in the vehicle handling differently than a factory equipped vehicle. Extreme care must be used to prevent loss of control or vehicle rollover. Failure to drive your modified vehicle safely may result in serious injury or death. Zone Offroad Products does not recommend the combined use of suspension lifts, body lifts, or other lifting devices.

You should never operate your modified vehicle under the influence of alcohol or drugs. Always drive your modified vehicle at reduced speeds to ensure your ability to control your vehicle under all driving conditions. Always wear your seat belt.

Difficulty Level

easy 1 2 **3** 4 5 difficult

Estimated installation: 2-3 hours

Special Tools Required

Reciprocating saw or equiv.

Tire/Wheel Fitment

33x12.50

» PRE-INSTALLATION NOTES

1. Special literature required: OE Service Manual for model/year of vehicle. Refer to manual for proper disassembly/reassembly procedures of OE and related components.
2. Adhere to recommendations when replacement fasteners, retainers and keepers are called out in the OE manual.
3. Larger rim and tire combinations may increase leverage on suspension, steering, and related components. When selecting combinations larger than OE, consider the additional stress you could be inducing on the OE and related components.
4. Secure and properly block vehicle prior to installation of Zone Offroad Products. Always wear safety glasses when using power tools.
5. Zone Offroad Products body lifts are designed to be used on vehicles in good operating condition. It is not recommended that body lifts be used on vehicles in poor physical shape. This includes rusted body mounts, damaged or worn frame-to-body mounting brackets, and poor mechanical condition. Perform a visual inspection of the vehicle before beginning installation.

***Important* Verify you have all of the kit components before beginning installation.**

Kit Contents

Qty	Part	Qty	Part
14	1-1/2" x 3" OD Lift Block	1	Bolt Pack 281
4	Bed Spacer	14	3/8 x 1-1/4" Bolt
4	Christmas tree fastener	14	3/8" Prevailing Torque Nut
4	3/4" x 2-3/16" Sleeve	28	5/16" USS Flat Washer
1	Front Bumper Bracket - Drv	2	1/2"-13 x 1-1/4" flat head allen bolt
1	Front Bumper Bracket - Pass	2	1/2"-13 serrated edge flanged nut
2	Rear Outside Bumper Bracket	3	5/16" x 1-1/4" Bolt
2	Rear Inside Bumper Bracket	6	5/16 SAE Flat Washer
1	Rear Center Bumper Bracket	3	5/16" Prevailing Torque Nut
1	Rear Bumper Step Spacer	1	5/8" x 1-1/2" Bolt
1	Spare Tire Relocation Bracket	2	5/8" SAE Flat Washer
1	Spare Tire Crank Relocation Bracket	1	5/8" Nylock Nut
1	Bolt Pack 279	6	7/16" x 3-1/2" Bolt
6	12mm x 70mm bolt	12	7/16" SAE Flat Washer
6	12mm flat washer	6	7/16" Prevailing Torque Nut
8	12mm x 150mm Bolt		
	2 1/4" external tooth serrated edge washer		
	1/4"-20 nylock nut - clear zinc		



INSTALLATION INSTRUCTIONS

1. Park the vehicle on a clean, flat surface and block the rear wheels for safety. Place automatic transmissions in park and manual transmissions in neutral.
2. Remove the negative battery cable first, then the positive battery cable. If equipped, the Supplemental Restraint System will be deactivated when the battery is disconnected.
3. Measure and record the space between the bumpers and the body as well as the cab to the bed for reference during the installation.

» FRONT DISASSEMBLY

4. If equipped, disconnect the fog light wiring harness from the bumper (on the driver's side of the bumper).
5. Remove the 8 bumper-to-frame mounting nuts and remove the front bumper from the vehicle. Save nuts. **Figure 1**



Figure1

6. Disconnect the ground cable from the driver's side frame rail, just in front of the upper control arm **Figure 2**. Save bolt.



Figure 2

7. Disconnect the driver's side ABS line at the connector attached to the inner fender.

8. Remove the two bolts mounting the brake line junction block (located just behind the upper control arm) to the top of the driver's side frame rail **Figure 3**.

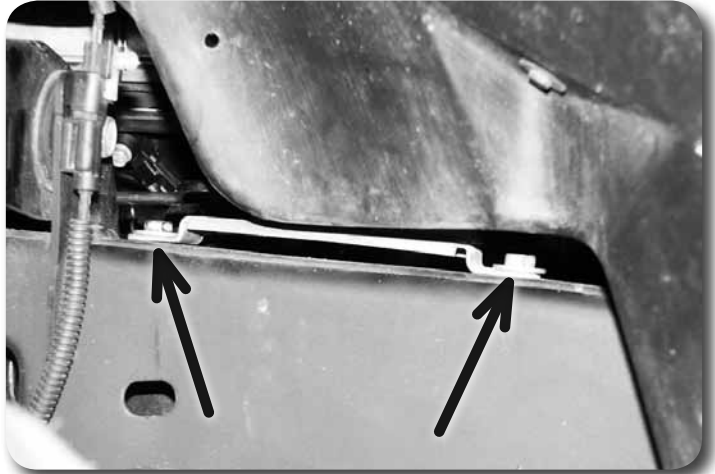


Figure 3

» **CAB LIFT PROCEDURE**

9. The radiator shroud must be modified. Measure in 3/8" from the edge and trim area from shroud for clearance. Mark up to the seam and around to the tab that sticks out the side of the shroud. **Figure 4a, 4b, 4c**

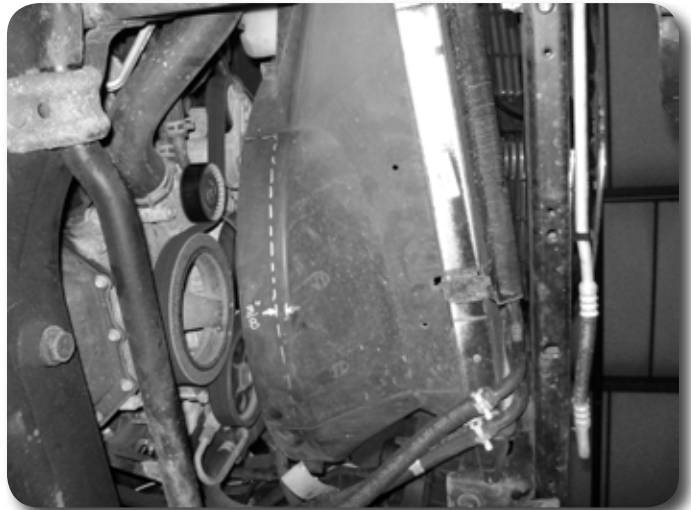


Figure 4a



Figure 4b

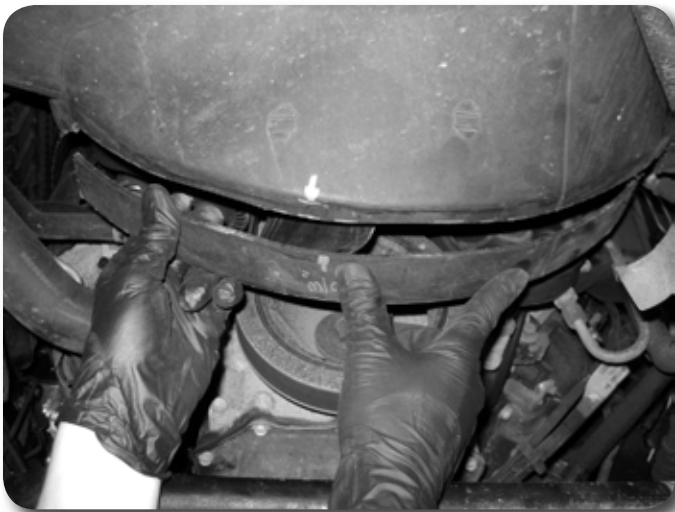


Figure 4c

10. Loosen but do not remove the driver side cab mount bolts.
11. Remove the passenger's side cab bolts. The captive washers on the bolts must be removed so they can be reused on the new bolts. Place the washer, with the bolt head down, across the open jaws of a bench vise and pound the bolt out of the washer with a hammer. Repeat this procedure with all the cab mount bolts.
12. Using a hydraulic jack and block of wood to spread the load, slowly lift the passenger's side of the cab. Continuously watch for lines, hoses, etc to be sure nothing is overextended. Lift the cab just enough to place the provided lift blocks between the body and the frame body mounts. Use the provided 3" diameter blocks.
13. Install 12mm x 150mm bolts with the factory oversized washers that were removed from the original bolts up through the cab mounts. Leave hardware loose.
14. Repeat the lift procedure on the driver's side. Pay close attention to the brake line junction block.
15. With that cab lifted, go back and remove each bolt and apply Loctite to the threads. Ensure the body is square on the frame. Torque all body mount hardware to 65 ft-lbs.

Step 13 Note

All new body mount hardware is located in hardware pack 279.

16. Reattach the ABS line to the driver's side inner fender and ground strap to the frame.
17. Reattach the brake line junction block removed in step 8. It will be necessary to slightly reform the lines to line the holes back up.

» FRONT BUMPER INSTALLATION

Front Bumper Installation Note

This installation requires removal of the front frame horn bumper brackets. Take care to make good measurements and quality cuts to ensure proper fitment of the new brackets. It is recommended to use a reciprocating saw or cut-off wheel to perform the cutting operation.

18. Carefully measure from the back surface of the factory bumper mounts on the frame rail $2\frac{1}{4}$ " and mark. Do this in several places all around each side of the frame rail. Carefully connect these points to form a straight, continuous cut line around the entire frame rail. For reference, this cut line should be located just behind a bulge in the frame rail.
19. Carefully measure again from the back surface of the factory bumper mounts on the vertical faces of the frame rail $4\frac{1}{4}$ " and mark. Do this in multiple locations and connect the points to form two reference lines on the vertical frame rail surfaces **Figure 5**. These lines will aid in positioning the new provided bumper brackets.

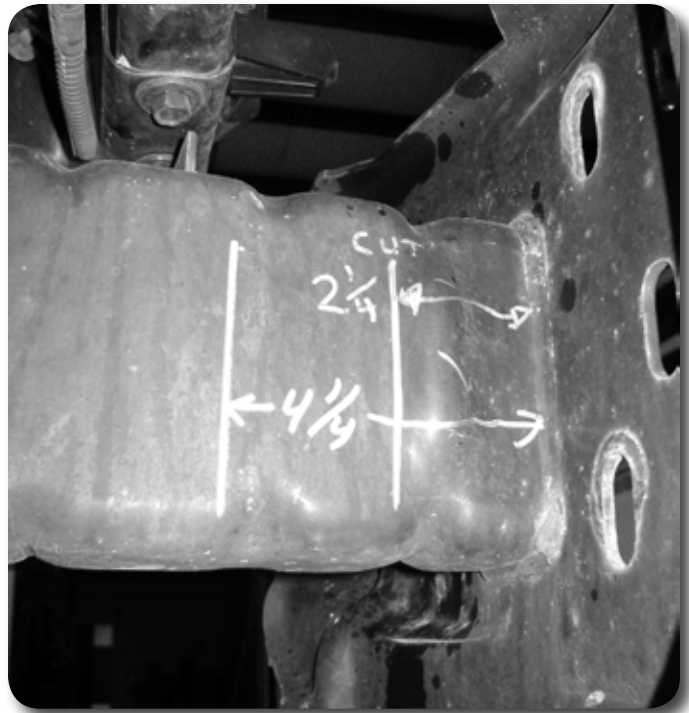


Figure 5

20. Double check the line dimension at several different spots to ensure they are at the appropriate location.
21. Cut the bumper mount off of the frame along the cut line (the one closest to the bumper mount). Use a reciprocating saw or cut-off wheels to perform this operation.
22. With the front bumper mounts removed, clean any burrs from the cut edge. Also check the vertical edges of the cut to be sure none of the bulged section of the frame remains. This would hinder this installation of the new brackets. If a trace of the bulge remains, grind it down flush with the rest of the frame rail. Paint any bare metal. **Figure 6**

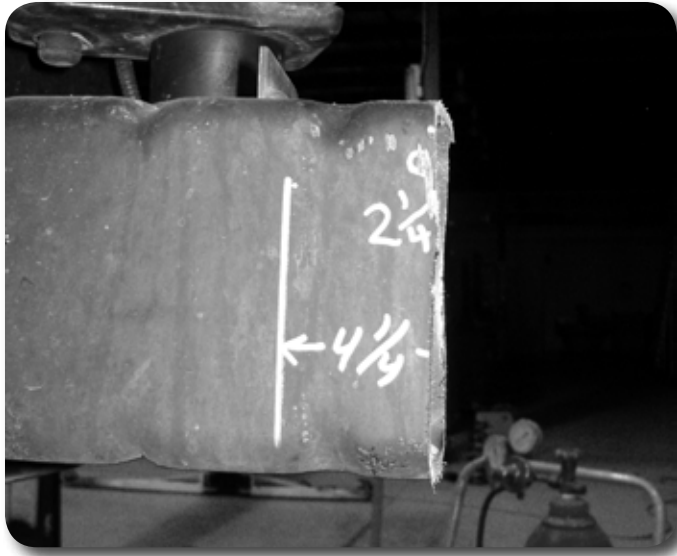


Figure 6

23. Install the new bumper brackets on the frame by lining up the reference line with the back edge of the bracket. These brackets are side specific. The taller portion of the bracket goes toward the inside of the vehicle. Align the top edge of the side plates on the new bracket with the top of the frame rail to determine the vertical position.
24. With the bracket in place, use the slots in the bracket as a template to mark the positions to be drilled on the frame. Mark all 6 slots (3 outside, 3 inside). Each of the holes will be drilled individually.
25. With the slot positions marked, remove the brackets. Using a center punch, mark the center of each slot to be drilled (6 per bracket). Drill $\frac{1}{2}$ " holes at each mark
Figure 7.

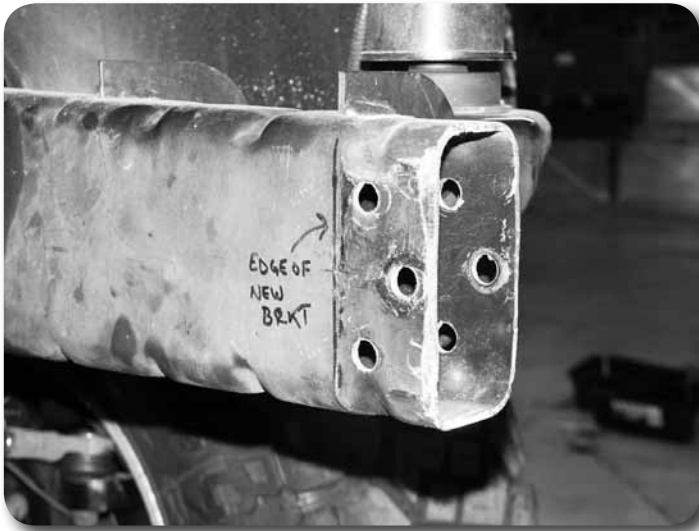


Figure 7

26. When all the holes are drilled, reinstall the brackets on the frame and loosely fasten through the top and bottom holes with $\frac{1}{2}$ " x 4" bolts, nuts and $\frac{1}{2}$ " SAE washers. Figure 8

Step 26-27 Note

Front bumper bracket hardware is located in hardware pack #281.

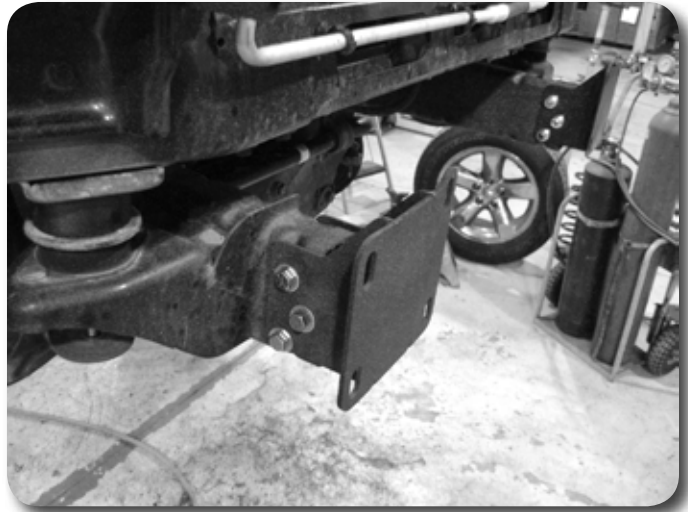


Figure 8

27. Place the provided frame crush sleeve (3/4 OD x 2-3/16" long) in the frame, aligned with the middle bracket hole and fasten the bracket, through the frame and sleeve with a 1/2" x 4" bolt, nut and 1/2" SAE washers. Leave hardware loose
Figure 9.



Figure 9

28. Install the front bumper on the new brackets and fasten with the factory nuts. Leave hardware loose.
29. Adjust the bumper brackets as necessary and torque hardware to 60 ft-lbs. Adjust the bumper vertically and tighten factory nuts to 60 ft-lbs.
30. Reconnect the front fog lights.

» REAR BUMPER REMOVAL

31. Disconnect the license plate lights and trailer harness (if equipped) from the rear bumper Figure 10.



Figure 10

32. Remove the license plate from the rear bumper and remove the two middle bumper bolts. Save hardware.
33. Remove the two (one per side) bolts mounting the top lip of the bumper to the frame **Figure 11**. Save bolts.

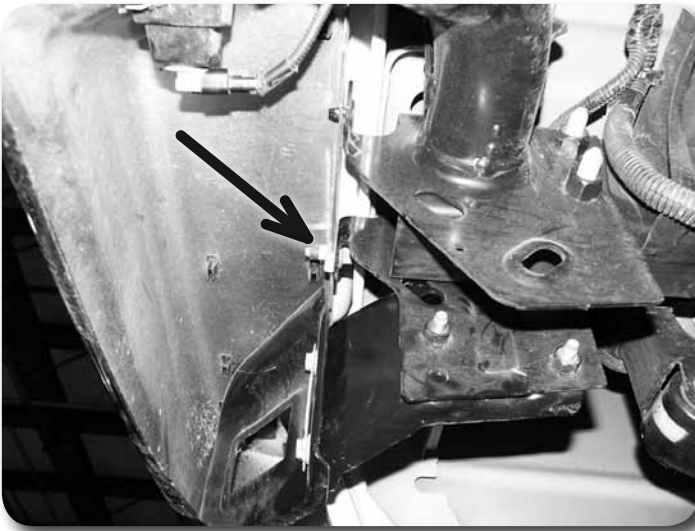


Figure 11

34. Remove the remaining two main bumper mounting bolts on on each side connecting the bumper bracket to bumper. Remove the bumper from the vehicle.
35. Locate the spare tire removal tool from under the passenger side seat and lower the spare tire and remove. See owner's manual.

» **BED LIFT PROCEDURE**

36. Loosen the 3 drivers side bed mounting bolts.
37. Remove the passenger side bed mounting bolts. Lift the passenger side of the bed just high enough to insert the body lift blocks. Install 12mm x 70mm bolts and 7/16" USS washers. Leave hardware loose.
38. Repeat the bed lift procedure on the driver side. With both sides lifted, remove the rubber pads from the frame where the bed rails rested. Place the provided

Step 37 Note

All bed mount hardware is located in hardware pack 279

1.5" tall steel overload spacers where the pads were located and install bed spacers with the supplied christmas tree fasteners through the hole in the frame. Figure 12



Figure 12

39. Adjust the bed using the dimensions taken earlier. Remove one bolt at a time and apply Loctite to the threads. Torque all hardware to 65 ft-lbs.

» **SPARE TIRE WINCH RELOCATION**

40. Remove the hitch pin retaining the spare tire winch crank tube to the winch and remove the crank tube from the vehicle. Remove the plastic grommet from the frame rail. Figure 13



Figure 13

41. Snap the OE crank grommet it in to the new relocation bracket. Figure 14a, 14b Install the bracket to the frame with the 5/8" x 1-1/2" bolt nut and washers into the existing hole in the crossmember. Leave loose.



Figure 14a



Figure 14b

42. Remove the 3 bolts that hold the spare tire winch to the frame. Locate the provided spare tire winch relocation bracket. Install the relocation bracket to the frame with the original hardware so the winch crank will now point towards the passenger wheel well. Loosely attach the winch to the bracket with the 5/16" x 1-1/4" bolts nuts and washers. Figure 15

Spare Tire Relocation:

Spare tire winch hardware is located in bolt pack 281



Figure 15

43. Slide the crank tube through the grommet and into the winch. Reattach it with the original hitch pin. Tighten the 5/16" winch hardware to 17 ft-lbs and the 5/8" bolt to 60 ft-lbs.

» REAR BUMPER INSTALLATION

44. The alignment pins at each bumper mount location will need to be removed. Using a cut off wheel, cut off the heads of the studs behind the mount **Figure 16** and punch them out. Remove the factory U-nuts.

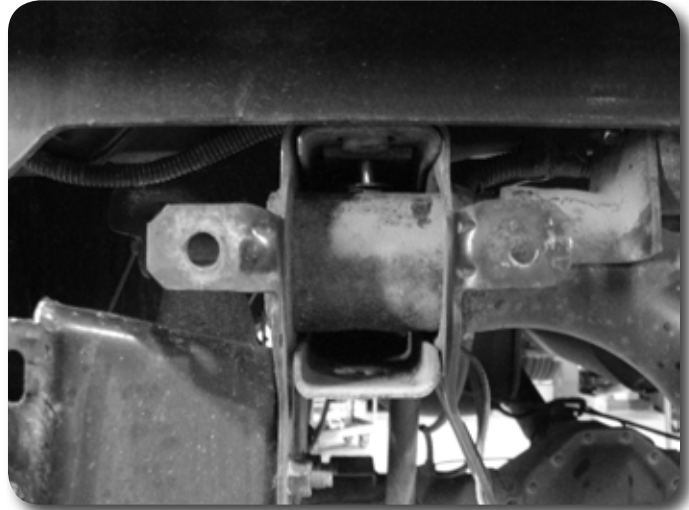


Figure 16

Step 45 Note

It may be necessary to slightly clear or drill out the stud hole to 7/16" if 3/8" hardware will not fit.

45. Locate the rectangular shaped bumper brackets with the formed ends. Using the lower holes and with the formed ends facing in, attach the supplied brackets to the frame using 3/8 x 1-1/4" bolts nuts and washers. Leave hardware loose.
46. Remove the factory U-Nuts from the center bracket and install them in the large holes of the center relocation bracket. Install the center relocation bracket using the 3/8" Flat head bolts, 5/16" USS washers, and flange nuts. **Figure 17**

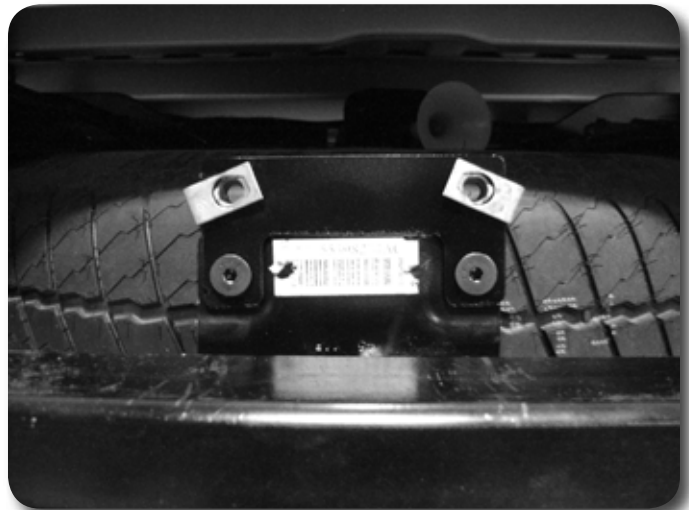


Figure 17

Step 47 Note

Step spacer hardware is located in bolt pack 281

47. Install the provided bumper step spacer with the 3/8" x 1.25" bolts nuts and washers through the existing holes in the bumper mount. Use the larger OD washers on the frame side.

48. Measure in approximately 2-5/8" and remove the formed material as shown from the bottom of the brackets that are still attached to the bumper on both sides. This will allow clearance for the flat relocation brackets to be attached.
Figures 18 & 19

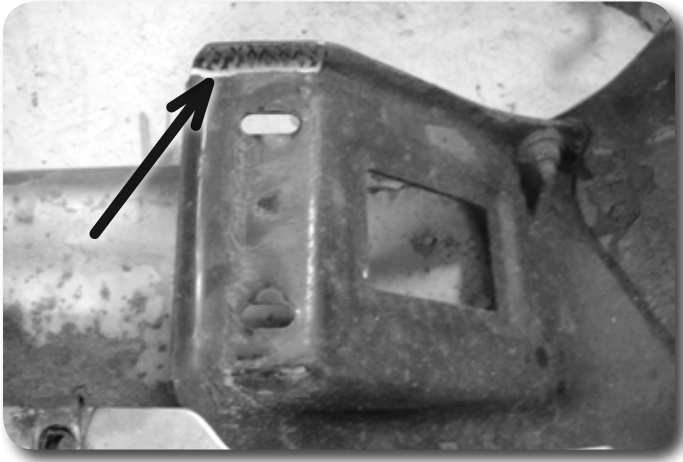


Figure 18

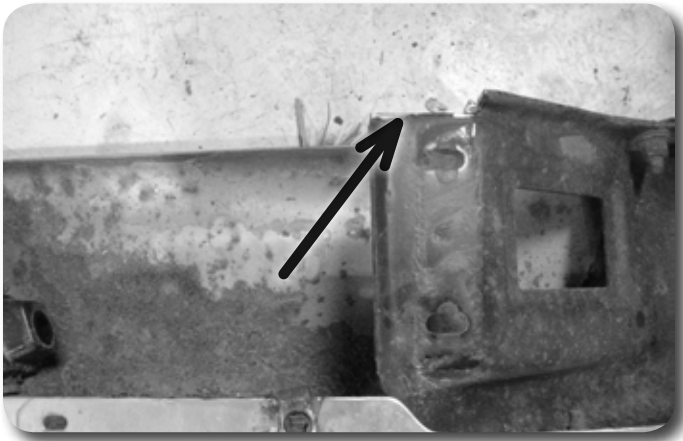


Figure 19

49. Using the new outside bumper relocation brackets as a template, mark the center of the holes to be drilled on the factory bumper brackets. Drill 1/2" holes at the marks on both bumper brackets. Figure 20

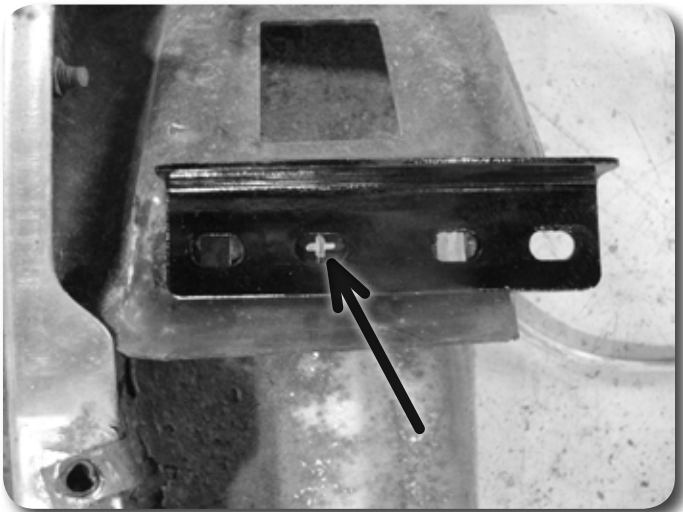


Figure 20

50. Similar holes will need to be drilled on the bumper brackets still on the frame. Either measure up 1.5" from the center of the slot and mark or use the new brackets as a template. Drill 1/2" holes at the marks. **Figure 21**

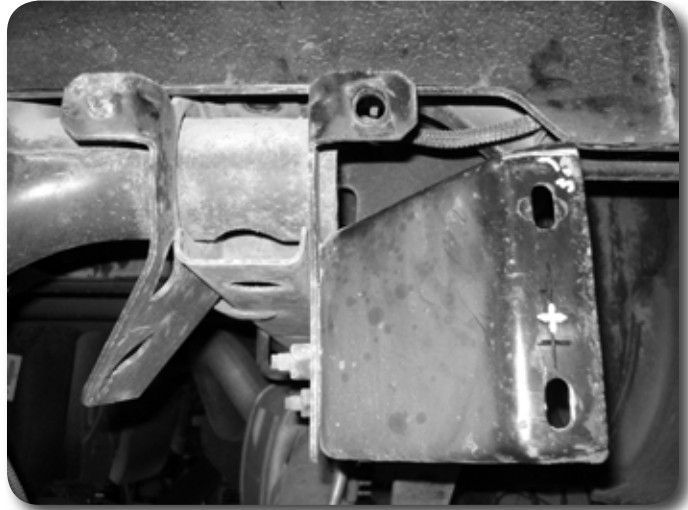


Figure 21

Step 51 Note

All rear bumper bracket hardware is located in bolt pack 281

51. Install the outside brackets to the bumper with the top bolts only. The rest of the bolts will have to be installed with the bumper on the vehicle as the bracket is sandwiched between the factory bumper brackets. **Figure 22**

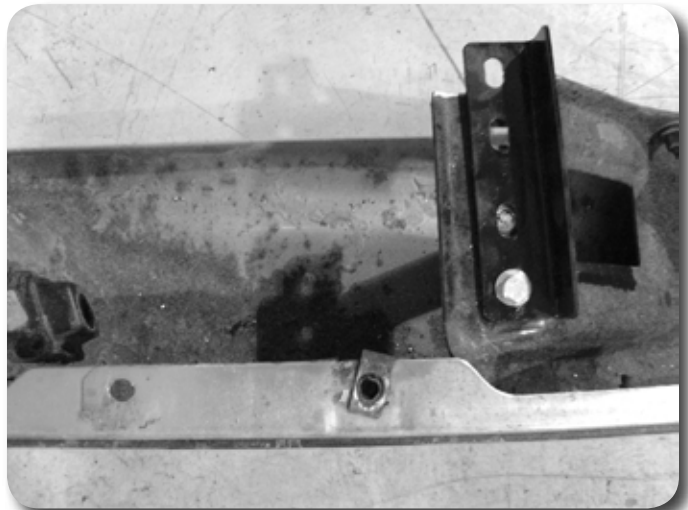


Figure 22

52. Install the bumper back on the vehicle by letting it rest on the new step spacer. Loosely fasten the center bracket with the factory hardware.
53. Install the remaining 3/8" x 1-1/4" hardware in the remaining bumper bracket mount locations. 2 at each inside bracket and 3 on each outside bracket. **Figure 23**



Figure 23

54. Reconnect the trailer and license plate light harnesses and re-install the license plate.
55. Re-install spare tire.
56. Check all hardware for proper torque.
57. Check hardware after 500 miles.

Post-Installation Warnings

1. Check all fasteners for proper torque. Check to ensure for adequate clearance between all rotating, mobile, fixed, and heated members. Verify clearance between exhaust and brake lines, fuel lines, fuel tank, floor boards and wiring harness. Check steering gear for clearance. Test and inspect brake system.
2. Perform steering sweep to ensure front brake hoses have adequate slack and do not contact any rotating, mobile or heated members. Inspect rear brake hoses at full extension for adequate slack. Failure to perform hose check/ replacement may result in component failure.
3. Perform head light check and adjustment.
4. Re-torque all fasteners after 500 miles. Always inspect fasteners and components during routine servicing.