



## **D9150 Installation Instructions**

### **09+ Dodge 1500**

### **1.5" Body Lift**

### **Read and understand all instructions and warnings prior to installation of product and operation of vehicle.**

Zone Offroad Products recommends this system be installed by a professional technician. In addition to these instructions, professional knowledge of disassembly/ reassembly procedures and post installation checks must be known. Minimum tool requirements include the following: Assorted metric and standard wrenches, hammer, hydraulic floor jack and a set of jack stands. See the "Special Tools Required" section for additional tools needed to complete this installation properly and safely.

---

#### **» PRODUCT SAFETY WARNING**

Certain Zone Suspension Products are intended to improve off-road performance. Modifying your vehicle for off-road use may result in the vehicle handling differently than a factory equipped vehicle. Extreme care must be used to prevent loss of control or vehicle rollover. Failure to drive your modified vehicle safely may result in serious injury or death. Zone Offroad Products does not recommend the combined use of suspension lifts, body lifts, or other lifting devices.

You should never operate your modified vehicle under the influence of alcohol or drugs. Always drive your modified vehicle at reduced speeds to ensure your ability to control your vehicle under all driving conditions. Always wear your seat belt.

#### **Difficulty Level**

easy 1 (2) 3 4 5 difficult

Estimated installation: 3-5 hours

#### **Special Tools Required**

---

#### **» PRE-INSTALLATION NOTES**

1. Special literature required: OE Service Manual for model/year of vehicle. Refer to manual for proper disassembly/reassembly procedures of OE and related components.
2. Adhere to recommendations when replacement fasteners, retainers and keepers are called out in the OE manual.
3. Larger rim and tire combinations may increase leverage on suspension, steering, and related components. When selecting combinations larger than OE, consider the additional stress you could be inducing on the OE and related components.
4. Post suspension system vehicles may experience drive line vibrations. Angles may require tuning, slider on shaft may require replacement, shafts may need to be lengthened or trued, and U-joints may need to be replaced.
5. Secure and properly block vehicle prior to installation of Zone Offroad Products. Always wear safety glasses when using power tools.
6. If installation is to be performed without a hoist, Zone Offroad Products recommends rear alterations first.
7. Due to payload options and initial ride height variances, the amount of lift is a base figure. Final ride height dimensions may vary in accordance to original vehicle attitude. Always measure the attitude prior to beginning installation.

**\*Important\* Verify you have all of the kit components before beginning installation.**

## Kit Contents

Qty	Part	Qty	Part
14	3" OD x 1.5" x 9/16" ID blocks	1	Rear bumper step spacer
4	1.5" square crush tube	1	Rear bumper center bracket
2	1/2" washer (0.11"-0.14" thick)	2	Rear bumper outside bracket
1	Ground strap extension	2	Spare tire spacer sleeve
2	Front bumper bracket	1	Loctite
4	Ribbed shank rivet (plastic)	1	Rear bolt pack
1	Body mount bolt pack	2	8mm-1.25 x 65mm bolt
8	12mm-1.75 x 150mm bolt	2	8mm flat washer
6	12mm-1.75 x 75mm bolt	8	10mm-1.50 x 40mm bolt
8	12mm flat washer	12	10mm flat washer
2	1/4" external tooth serrated edge washer	4	10mm-1.50 prevailing torque nut
1	1/4"-20 nylock nut	2	1/2"-13 x 1-1/4" flat head allen bolt
		2	1/2"-13 serrated edge flange nut

# Installation Instructions

---

## » FRONT DISASSEMBLY

1. Park vehicle on clean, flat, and level surface. Block the wheels to prevent the vehicle from rolling.
2. Disconnect the battery.
3. Disconnect the ground strap from the inside of the driver's side wheel well.

Figure 1



Figure 1

4. Engine mounted cooling fans: Remove the lower radiator shroud cover, it will not be reinstalled. Models with electric fans will not require the removal or modification of the factory shroud. Figure 2



Figure 2

5. Remove the upper radiator cover. Figure 3



Figure 3

6. Remove the grill; disconnect the 4 bolts that attach the grill to the body. Figure 4  
Pull the lower portion of the grill straight out and slightly up.

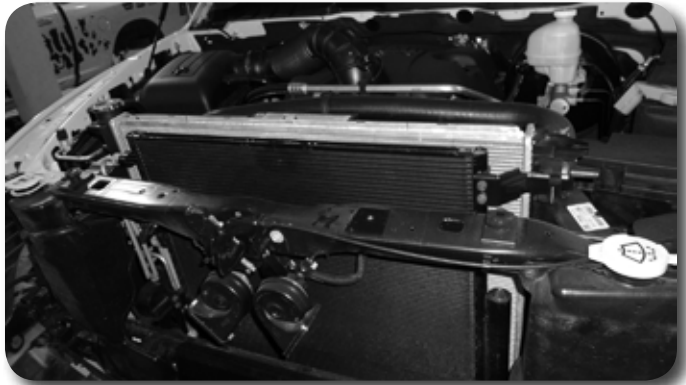


Figure 4

7. Remove the 2 bolts that attach the headlights to the body. Figure 5

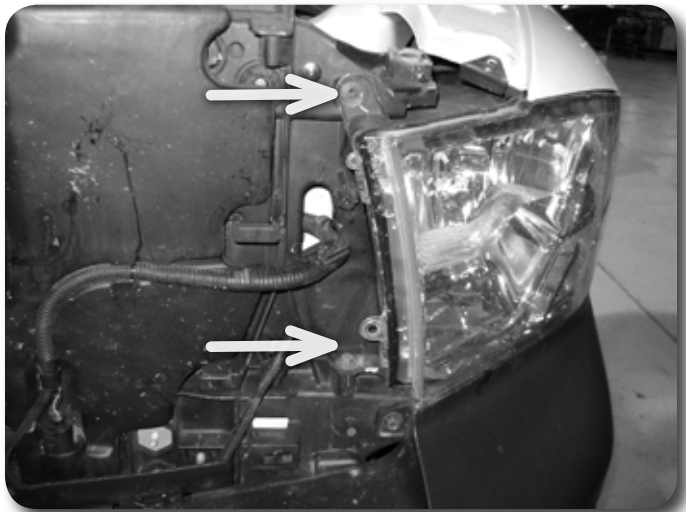


Figure 5

- Lower the flap inside the wheel well to access the headlights. Raise the plastic retaining clip up to allow the headlight to be removed. Pull out on the headlight to dislodge it. **Figure 6a, 6b** Disconnect the wiring harness, and set headlights aside.



Figure 6a



Figure 6b

- Remove the bolt that attaches the inner fenderwell to the front bumper **Figure 7a**. Sport models need to have additional bolts removed. **Figure 7b**



Figure 7a

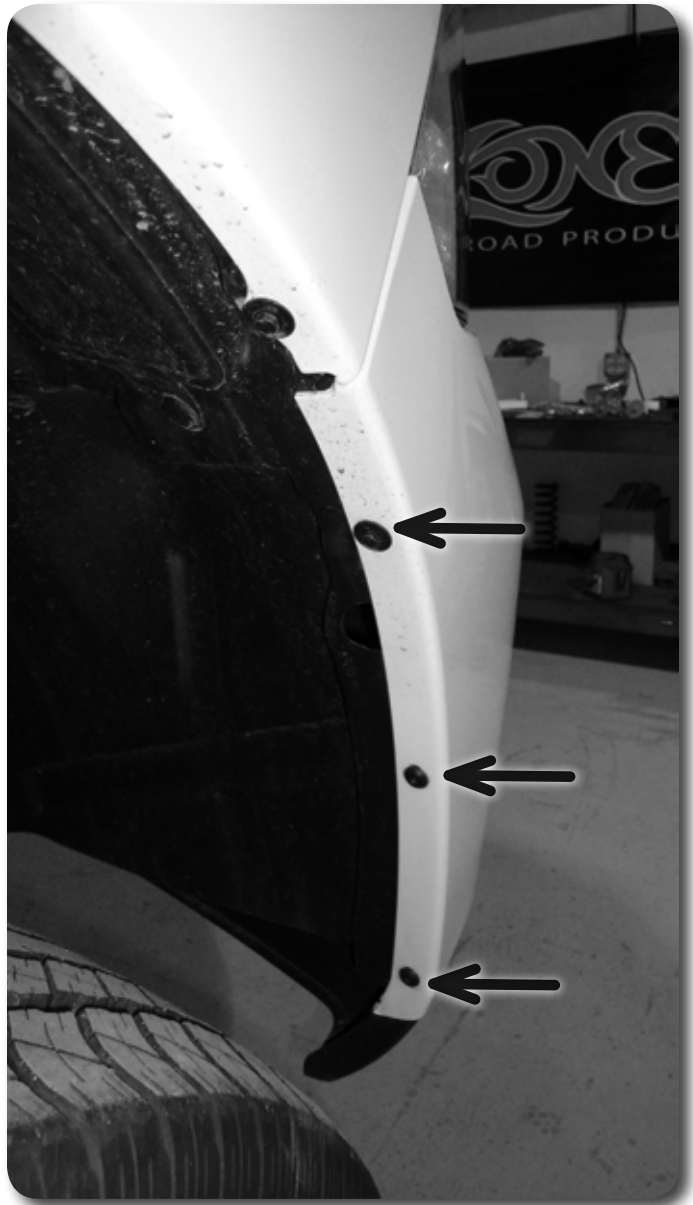


Figure 7b

10. Remove the top cover bolt that is run from the inside of the fender. Figure 8



Figure 8

11. Sport models these steps are not required, skip to step #13. Remove the upper bumper cover from the vehicle.
12. Loosen the 4 bolts (2 per each side) that attach the upper cover support bracket to allow it to move out of the way for removal of the bumper. **Figure 9**

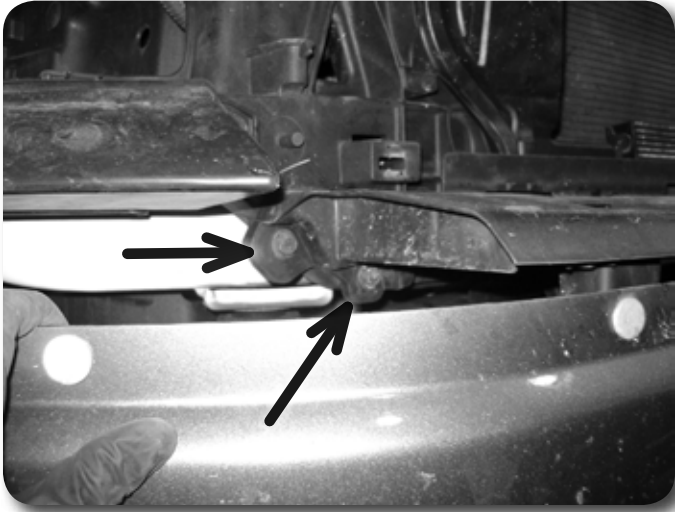


Figure 9

13. Remove the 6 nuts (3 per side) that attach the bumper to the frame. Remove the bumper from the vehicle. **Figure 10**

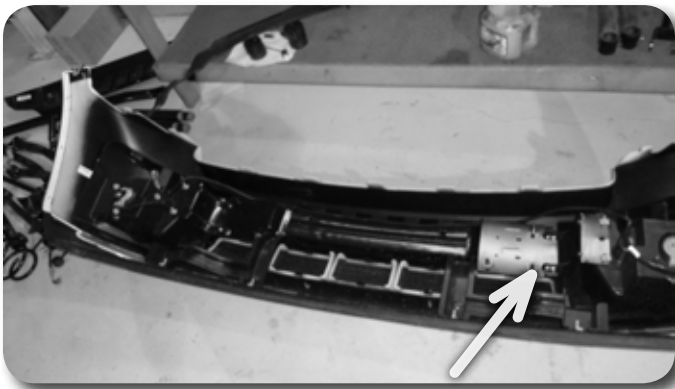


Figure 10

---

### » **CAB AND BED LIFT PROCEDURE**

14. Remove the cab mounting bolts (4 per side) from the passenger's side only. Loosen the bolts on the driver's side.
15. Remove the washers from the factory bolts. **Figure 11**



Figure 11

### Step 16 Note

Body mount hardware is located in bolt pack 279.

16. Raise the passenger's side of the cab and install the body lift blocks. Apply loctite and install the 12mm x 150mm bolts with the factory washers. The rear cab mount will get the large factory block with a new 12mm washer. Do not tighten bolts at this time.
17. Repeat installation on driver's side. Tighten all body mount bolts to 65 ft-lbs.
18. Locate the spare tire removal tool from under the passenger side seat and lower the spare tire and remove. See owner's manual.
19. Remove the 3 passenger's side bed bolts. Loosen the driver's side bed bolts.
20. Lift the passenger's side of the bed and install the lift blocks. Apply loctite to the 12mm x 75mm bolts and install them at the bed mounts with the provided washers. Do not tighten. Remove the rubber bed supports. Transfer them to the new bed spacer blocks. Install them with the plastic push tree pins. **Figure 12**



Figure 12

21. Repeat block installation on driver's side. Tighten all hardware to 65 ft-lbs.

---

## »» FRONT BUMPER INSTALLATION

22. Bend the factory tab back flush with the bracket. Place the front bumper brackets over the front of the frame horn. Mark the center of the holes to be drilled. Drill holes to 1/2". **Figure 13**





Figure 13

23. Reinstall the front bumper by attaching the two lower studs into the drilled holes directly against the frame rail. Place the thick washer over the top stud of the bumper. Install the relocation brackets. Tighten assembly with factory nuts.

Figure 14

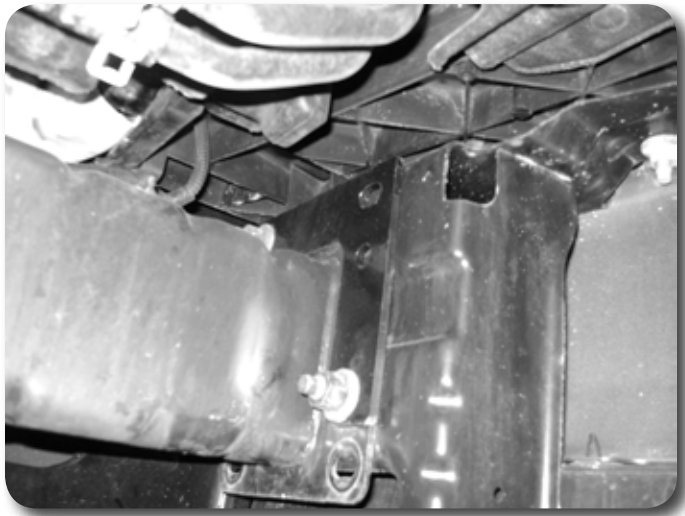


Figure 14

24. Tighten the upper bumper cover support (2 per side).
25. Reinstall upper bumper cover.
26. Reinstall headlights, grill, and upper radiator cover.
27. Install the ground strap extension in the driver's side inner fenderwell. Use serrated edge washer between the strap and wire. Use serrated edge washer between the strap and frame. Attach with  $\frac{1}{4}$ " nylock nut. Figure 15

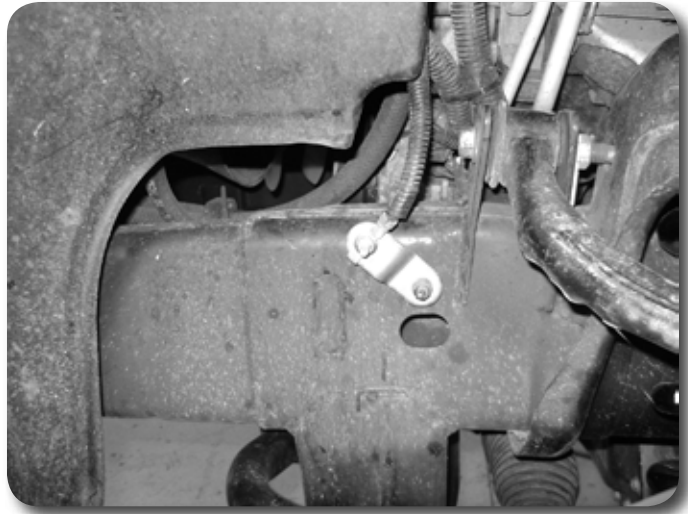


Figure 15

28. Adjust bumper to be even side to side. Tighten bumper bolts to 65 ft-lbs.
29. Recheck all hardware for proper torque.

---

» **REAR BUMPER & SPARE TIRE WINCH INSTALLATION**

30. Disconnect the trailer harness and 2 license plate lights.
31. Remove the license plate to reveal the 2 center bumper bolts.
32. Remove the bumper by removing the 6 bumper bracket bolts - 2 on each side and 2 in the center. **Figure 16**

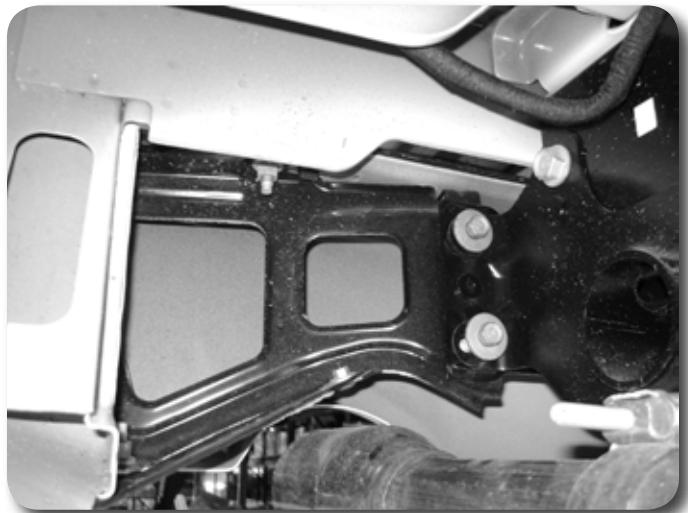


Figure 16

33. The alignment pins at each bumper mount location will need to be removed. Using a cut off wheel, cut the heads of the studs off behind the mount as shown. **Figure 17**



Figure 17

34. Drill the holes where the studs were located to 1/2"
35. Remove the two bolts that hold the spare tire winch to the frame. Locate the provided 1.5" spacers and supplied 8mm x 60mm bolts and washers. Install the spacers between the spare tire winch and frame and tighten bolts to 18 ft-lbs.

Figure 18

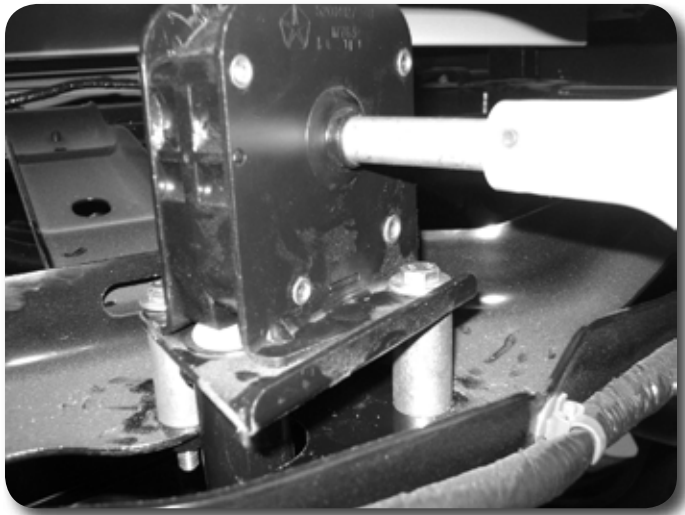


Figure 18

36. Remove the factory U-Nuts from the center bracket and install them in the large holes of the center relocation bracket. Install the center relocation bracket using the 1/2" flat head bolts, and serrated edge nuts. Figure 19

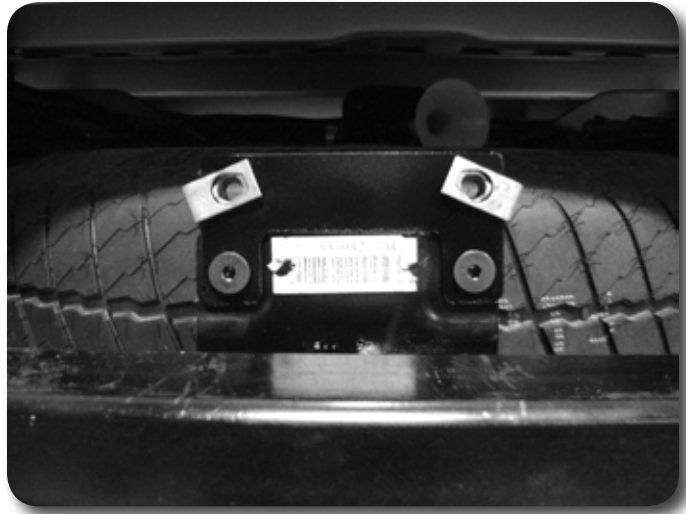


Figure 19

37. Install the provided bumper step spacer with the 10mm x 40mm bolts nuts and washers through the existing holes in the bumper mount.
38. The bottom of the bumper will have to be slightly trimmed. Measure over 3/4" and cut out the sections as shown in Figure 20a & 20b.

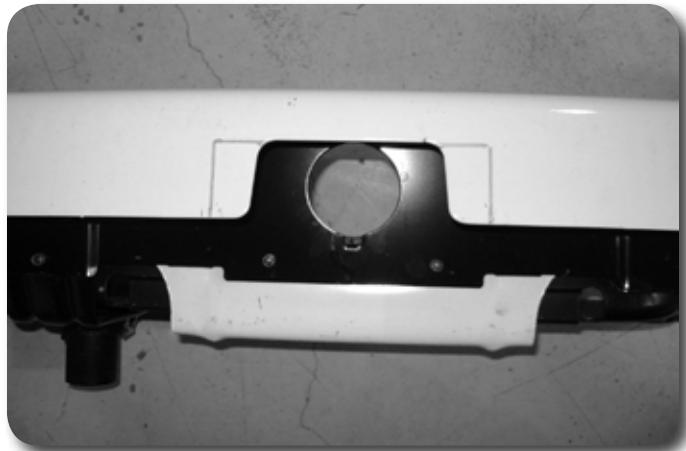


Figure 20a

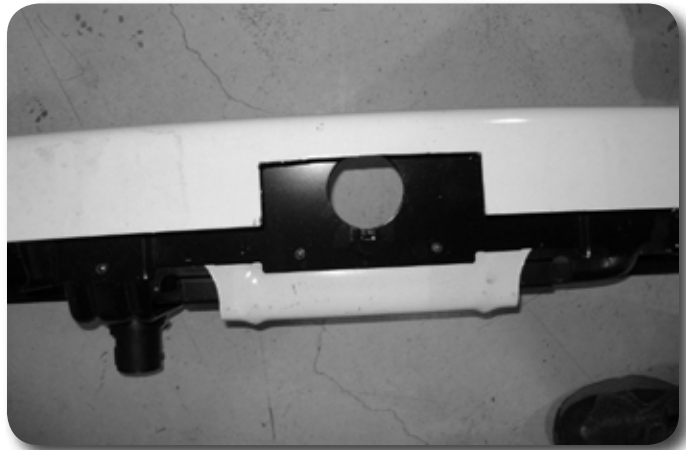


Figure 20b

39. There is a slot and hole between the factory mounting holes on the bumper. Drill out the factory hole to 1/2" and do the same in the center of the slot using a drill or rotary grinder. Figures 21a & 21b

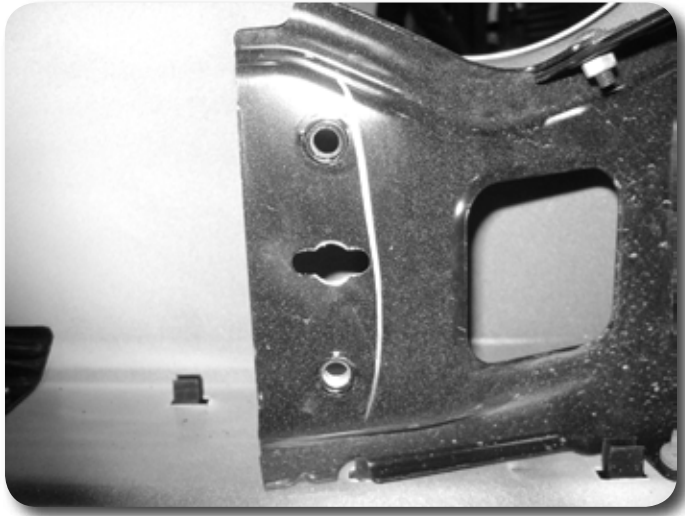


Figure 21a

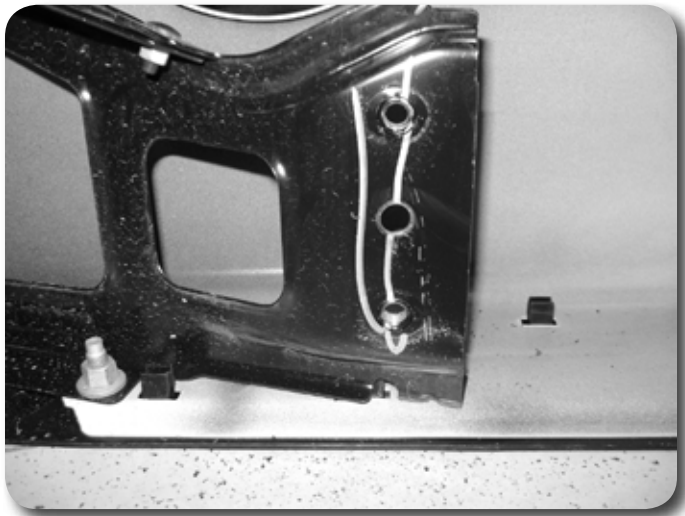


Figure 21b

40. Install bumper back on the vehicle by letting it rest on the new step spacer. Loosely fasten the center bracket with the factory hardware.
41. Locate the provided side bumper brackets. These will sandwich between the bumper and frame bracket. Insert the bracket so cutout is at the top and install using supplied 10mm x 40mm bolts and washers. The center bolts will require the additional nuts and washers.
42. Reconnect the trailer and license plate light harnesses and re-install the license plate.
43. Re-install spare tire.
44. Check all hardware for proper torque.

### Post-Installation Warnings

1. Check all fasteners for proper torque. Check to ensure for adequate clearance between all rotating, mobile, fixed, and heated members. Verify clearance between exhaust and brake lines, fuel lines, fuel tank, floor boards and wiring harness. Check steering gear for clearance. Test and inspect brake system.
2. Perform steering sweep to ensure front brake hoses have adequate slack and do not contact any rotating, mobile or heated members. Inspect rear brake hoses at full extension for adequate slack. Failure to perform hose check/replacement may result in component failure. Longer replacement hoses, if needed can be purchased from a local parts supplier.
3. Perform head light check and adjustment.
4. Re-torque all fasteners after 100 miles. Always inspect fasteners and components during routine servicing.