



BurnBox Hellcat – Line Lock/Cooldown/Light Show

For Firmware Version 9.0.8 – 100317

Installation

Installation is a matter of simply plugging the BurnBox HC Module into the OBDII diagnostic port under the dashboard, above the parking brake. The module will shut itself off, 30 seconds after the car goes to sleep. So there's no need to unplug it – it'll always be ready to use.

Operation

Line Lock: The BurnBox HC Module will use the ABS solenoids to lock the front wheels for burnout purposes. To use this feature, you must stop the car then press the steering wheel LEFT ARROW button and hold it, and press/release the CRUISE + button. Continue to hold the LEFT ARROW button. Once the ABS light on the dash comes on (and EVIC message "Line Lock ON"), pump the brake pedal twice firmly and release. Press the gas pedal, and the rear wheels will break traction. Brakes release when the LEFT ARROW button is released. You can also use a remapped AUX button or Adaptive Cruise button for Line Lock.

FAN/Intercooler pump Cooldown: Set the dash to "Audio" mode. Press the RIGHT ARROW steering wheel button and CRUISE CANCEL buttons at the same time; the dash will display "FAN ON", then the engine fan will start running. Press the buttons again to advance to "IC PUMP ON", then FAN+IC PUMP LOW, followed by "FAN+IC PUMP HIGH". Again will turn the Cooldown mode off. Starting the car will also turn off the cooldown mode, as it will also turn off if the battery voltage drops below 10.8V under load. You can also use a remapped AUX button or Adaptive Cruise button for Cooldown.

Light Shows:

The BurnBox HC Module comes pre-configured with 6 light shows out of the box, plus 3 "make your own" light shows that you can configure with the ZPU utility. There are four ways to control the light shows on the BurnBox HC Module:

Keyfob: The light show can be turned on by pressing unlock-unlock-lock-unlock from the keyfob. This will start the first light show in the sequence (depending on which show it's configured to start with). Pressing unlock again will advance to the next enabled show. Pressing lock will turn off the light shows. You may lock the vehicle while the shows are on by pressing the button on the door handle or using the key.

Quick-on: The light show can be activated by moving the High Beam stalk to the forward (hi beam) position, and tap the CRUISE + button. This will start the first light show in the sequence (depending on which show it's configured to start with). Pressing CRUISE + again will advance to the next enabled show. Moving the High Beam stalk back to its normal position will end the show.

Dash Menu: You can start the show by setting the dash to "Audio" mode, then press the left arrow and tap cruise CANCEL button. "Lightshow?" will display on the dash. Hold left arrow and tap cruise on/off (center) button



to turn on the first light show in the sequence. Again to advance to the next show. Exit the menu (left arrow and CANC) to turn off the show.

AUX buttons or Adaptive Cruise buttons:

See the button remap instructions below. You can use the mapped buttons to quickly access any one of the light shows. Press to toggle on/off. If the dash is set to "audio" you will see a confirmation message of the light show on or off.

The BurnBox HC Module will shut off if it's used for such a long time that the vehicle battery voltage drops below 11V.

Mapping AUX/ ACC buttons

If you installed the AUX button bank, the three buttons are available full-time. If you have Adaptive Cruise Control you can remap the near/far distance buttons, which will only be available when ACC is off. To remap, first place the dash in the "audio" screen. Then press and hold the left arrow button, and press the button you want to remap. Press again to switch through the options. When you get to the desired choice, let go of the left arrow.

Configuration

Configuration of the BurnBox HC Module is accomplished by using the supplied USB cable connected to a PC, using the ZPU Programming Utility. The ZPU User Guide explains how to install ZPU and how to perform firmware updates.

Please see the accompanying "Light Show Configuration Guide" to configure your BurnBox HC Module's light show options.

Please be aware that modifying your vehicle in any way can affect your vehicle's warranty, longevity. Please use with caution, and AT YOUR OWN RISK.

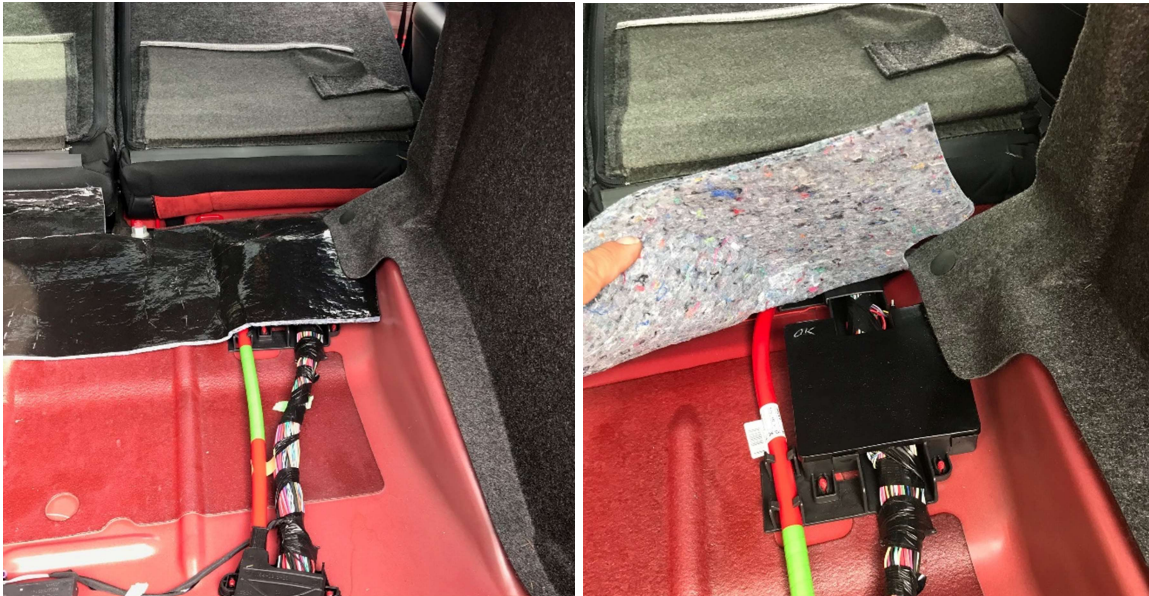
Double Bypass Installation Instructions

Overview

The Double Bypass harness kit is designed to easily plug into existing vehicle connectors, adding an OBD2 port in the trunk of supported vehicles. This is a requirement for 2018 models as there is a security device which blocks aftermarket access on the factory OBD2 port. The Double Bypass can also be used on older supported vehicles to relocate devices such as Z Automotive Tazer or BurnBox to the trunk, freeing up the factory OBD2 port for other uses. Install time is under 5 minutes and requires a 10mm wrench and a key or screwdriver.

Installation

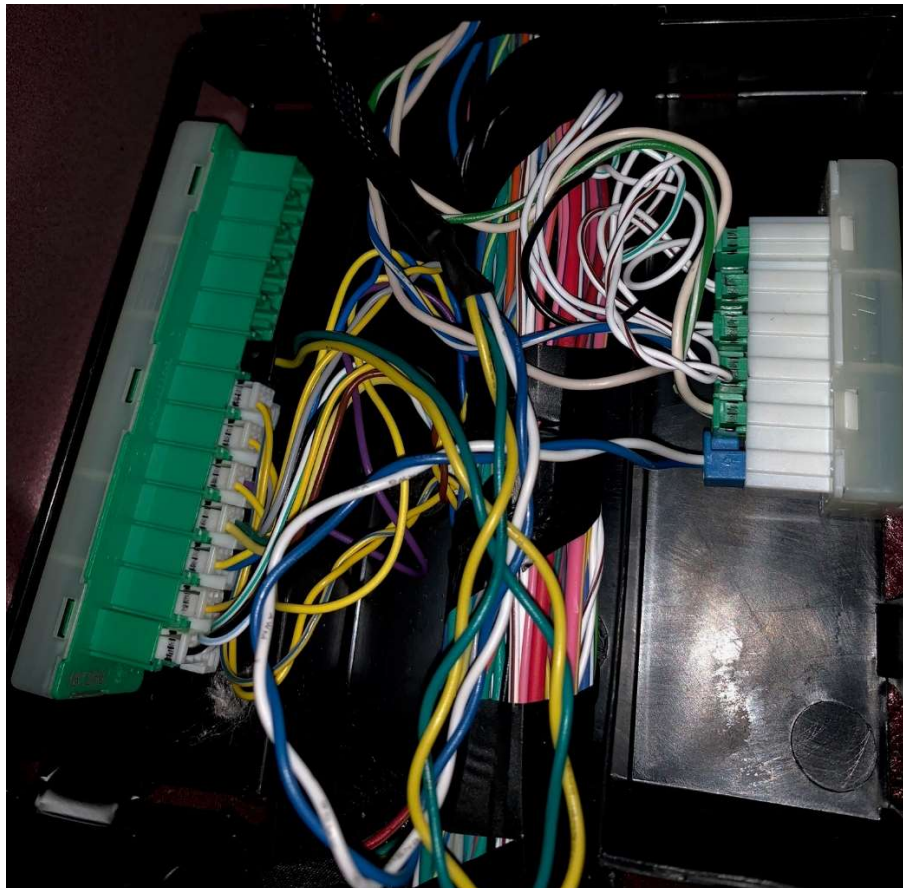
First, open the trunk and lift out the trunk floor panel. Locate the STAR connector access box, which is on the passenger side, right behind the rear seats, under a layer of padding.



Use a key or screwdriver to release the tabs that hold the cover on the access box.



Plug the blue plug of the Double Bypass harness into the WHITE STAR connector that has the green plugs. Plug the black plug into the GREEN STAR connector that has white plugs. Any available slot will work.



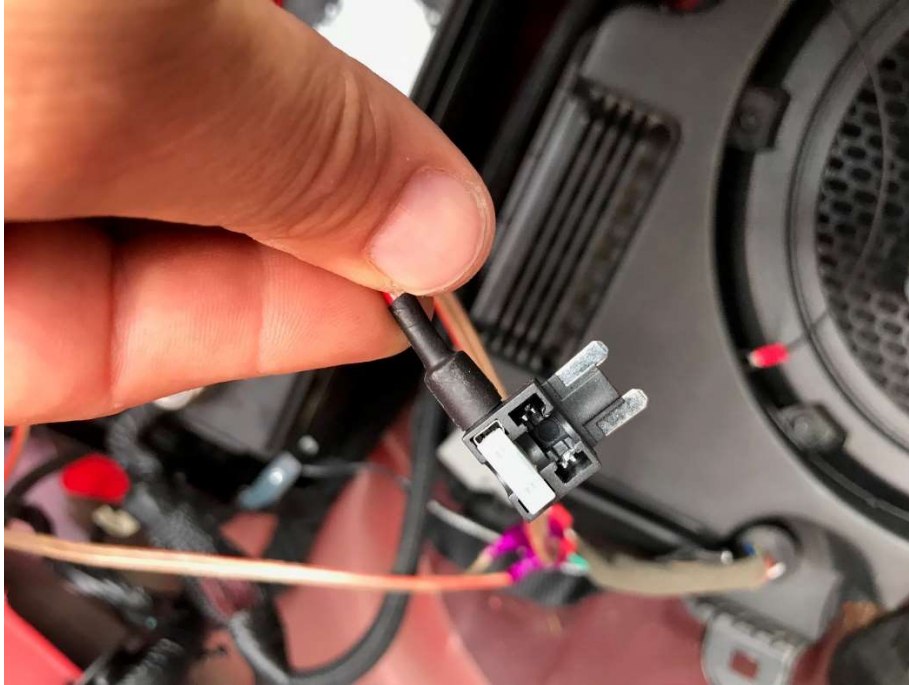
Snap the cover back on; this part is done. Route the cable towards the battery.



Lift off the cover of the fuse box behind the battery. In the cover, you will find a yellow tool that is used to remove fuses. Locate and remove fuse 37.



The add-a-circuit fuse tap will come with a 5A fuse already installed in the upper position. Plug the fuse you pulled from location 37 into the lower position (photo below shows it not installed)



Plug the add-a-circuit into the slot for fuse 37 as shown.





Locate the ground lug behind the battery, loosen the nut a couple turns using a 10mm wrench. Insert the Double Bypass ground lug behind the nut and tighten.



Plug in your Z Automotive device or other compatible OBD2 device and enjoy. A good place to secure it is between the battery strap and the battery.



[View other performance chips and programmers made by Z Automotive on our website.](#)