

*Strive Together*



# YOKOHAMA

TYRE CATALOGUE 2017





With the spirit that spearheaded a revolution,  
YOKOHAMA developed innovative products  
and technologies that the world embraced.  
One cog in a global machine that continues  
to bring the world new and innovative products.

And the future holds a tapestry of innovations,  
spun with technology and history  
that is exclusively YOKOHAMA.

# PIONEERING YOKOHAMA



## TIMELINE

### 1910s

- Yokohama Rubber Established (1917)

### 1920s

- Japan's first corded tire developed in Hama Town
- The Hiranuma Plant destroyed in the Great Kanto Earthquake



Hiranuma Plant



Hama Town

### 1930s

- The first tire was produced at the Yokohama plant

### 1940s

- Yokohama plant is destroyed by the allied forces



Yokohama Plant

### 1950s

- Construction of Hiratsuka plant begins
- Bus and truck tire development (Hama King)
- Develop Japan's first nylon corded tire
- Nylon corded airplane tires produced domestically



Hiratsuka Plant

### 1960s

- Truck and Bus High-Speed tire debut (High-speed Y98)
- Developed the Y-490 drag-racing slicks
- Developed Japan's first privately produced jet airplane tires

### 1970s

- Launched sales of G.T. SPECIAL SEALEX, offering automatic puncture-sealing—a first for Japan
- Began sales of Japan's first truck and bus steel snow radial
- Rally cars with G.T. SPECIAL tires won the Safari Rally Championship and the Southern Cross Rally—winning the latter five years in a row
- Launched sales of ADVAN HF for passenger cars
- Launched worldwide development of truck tires (40,00-57 60PR/200t Dump Truck Tire)



SEALEX



ADVAN HF



ASPEC



GRANDPRIX

### 1980s

- Launched the ASPEC GRANDPRIX
- Launched the ADVAN HF Type-D, half slick half unsymmetrical patterned tire
- Became the exclusive supplier of official tires for the 1st Macao F3 Grand Prix
- Approved for use with the Porsche 911
- Launch of the Truck/Bus STEM series radial, with performance based on the "load-state general performance theory"

### 1990s

- Launched a new tread without straight grip on the ADVAN NEOVA AD05/AD06
- Launched the GEOLANDAR A/T for recreational vehicles
- Launched the first of the fuel-efficient DNA series domestically



GEOLANDAR

### 2000s

- Places in 24 Hours of Le Mans GT Class
- Team TAISON wins the 24 Hours of Le Mans Prototype Class with ADVAN Tires
- Established ADVAN worldwide as YOKOHAMA's global flagship brand
- Launched the truck/bus air-pressure monitoring system HiTES
- Launched the fuel-efficient, low-maintenance ZEN series



HiTES

### 2010s

- Launched the first of the BluEarth series, a people-friendly and eco-friendly, fuel-efficient passenger-car tire
- Introduced the development of the aerodynamic points, "Dimple Side Design"
- Placed in the Pike's Peak International Hill Climb
- Announced the AERO-Y, YOKOHAMA's technology in an electric concept vehicle
- The Outside Fin is introduced at Tokyo Motor Show as a study in aerodynamics
- Launches the new SPIRALOOP belt technology in North America, offering a flat single tire for trucks that reduces rolling resistance



Pike's Peak Entry



# Delivering top quality YOKOHAMA Tyres to customers everywhere

We at YOKOHAMA will be celebrating our 100th anniversary in 2017.

Ever since we were established, our focus as a tyre manufacturer has been to produce the highest quality tyres possible, since tyres are a component critical to vehicle safety.

Thanks to the loyalty of our customers, our company now manufactures and delivers tyres to destinations around the world. We are pleased to provide this product that serves to support the daily lives of our customers and keep them fully satisfied.

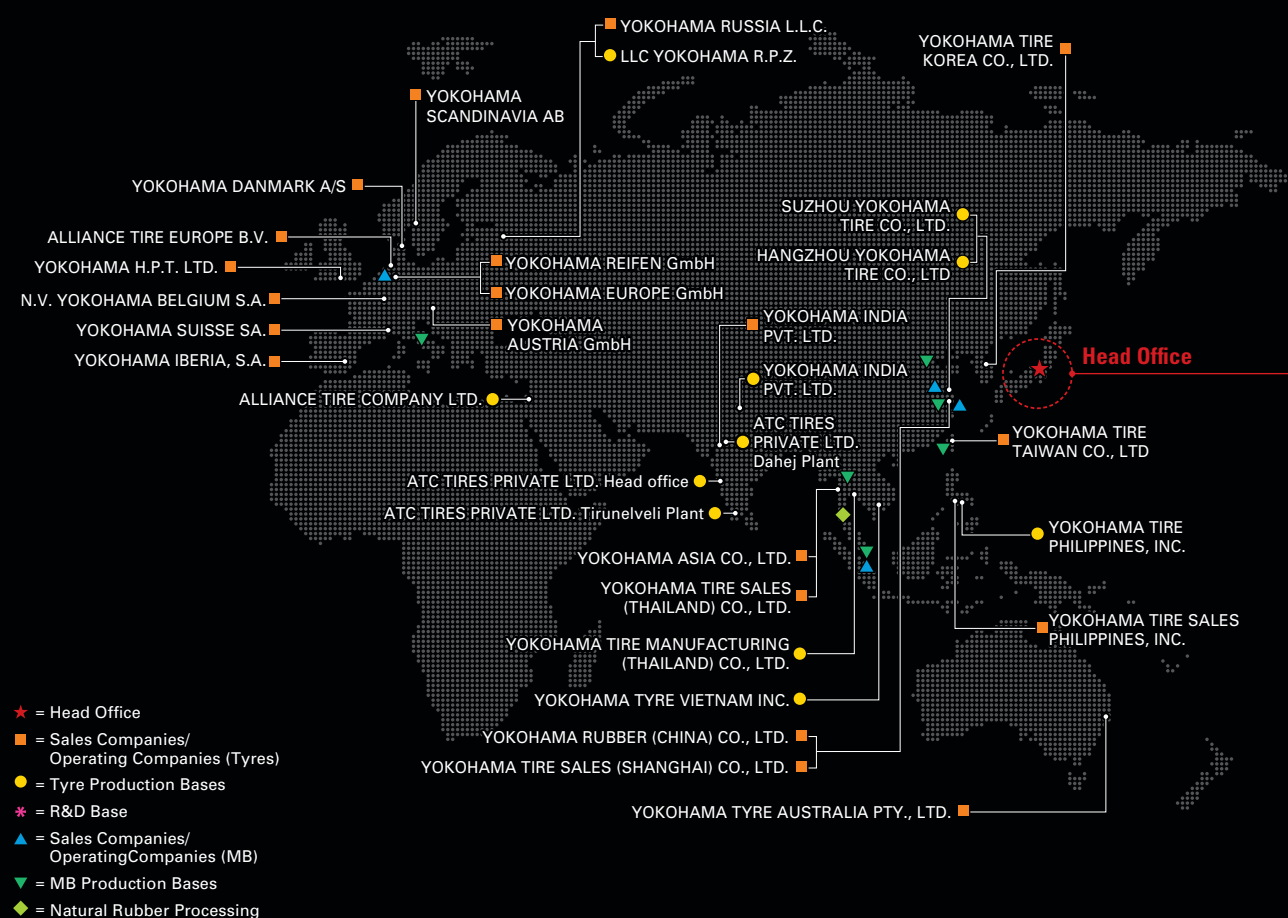
In this connection, we work to boost our technologies on a daily basis.

We integrate not only our tyre plants in Japan but at our overseas locations with cutting-edge production facilities and sophisticated technology standards to produce the highest quality product.

Our promise is to deliver products that customers love from our plants across the globe to customers around the world.

At YOKOHAMA, we are keenly aware of the changing times, which means we never lose our passion to continuously improve safety, quality, and performance — no matter where our tyres are produced.

## YOKOHAMA Global



## Contents

Pioneering YOKOHAMA	01-02
Introduction	03-04
Choosing Your YOKOHAMA Tyre	05-06
YOKOHAMA High Performance Tyre Series Line-up	07-08
<b>ADVAN</b>	9-18
ADVAN Sport V105	9
ADVAN Sport V551	11
ADVAN Sport V701	13
ADVAN Sport AD08R	15
ADVAN Sport A052	17
<b>BluEarth</b>	19-24
BluEarth AE50	19
BluEarth ES32	21
BluEarth RV02	23
<b>GEOLANDAR</b>	25-32
GEOLANDAR G056	25
GEOLANDAR G055	27
GEOLANDAR G015	29
GEOLANDAR G001C	31
<b>PARADA</b>	33-34
PARADA Spec-X PA02	33
Other Tyres RY818/AS01/AC01	35-36
Original Equipment	37
List of Available Patterns & Sizes	39-42
Basic Tyre Knowledge	43
Sidewall Information	44
Runflat Tyre	45
Air Pressure, Load Index (LI)	46
YOKOHAMA at a Glance	47-50
History	51
For Your Comfort & Safety	52
Facts about tyres	53



# Choosing Your YOKOHAMA Tyre

## Choose your tyres based on your vehicle type

When you choose the tyre that's right for your vehicle type, your car drives the way it should—and the way you want to drive! YOKOHAMA tyre makes driving even more fun.



**ADVAN**  
*Sport*  
V105

- High Performance Saloon
- High Performance Sports Car
- High Performance SUV

P09



**ADVAN**  
*FLEVA*  
V701

- High Performance Sports Car

P13



**ADVAN**  
*NEOVA*  
AD08 R

- High Performance Sports Car

P15



**ADVAN**  
*A052*

- High Performance Sports Car

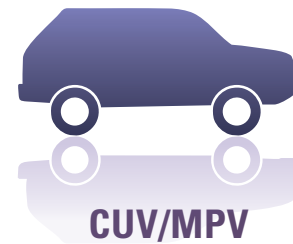
P17



**ADVAN**  
*dB*  
decibel

- Luxury Saloon

P11



**BluEarth**  
*RV-02*

- CUV
- MPV

P23



**BluEarth-A**  
ACE  
AE-501

- Large Family Car
- Small Family Car

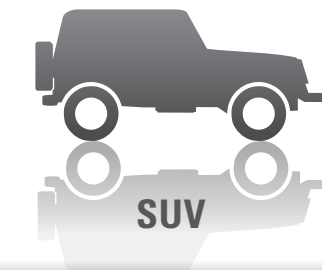
P19



**BluEarth-Es** ES32

- Large Family Car
- Small Family Car

P21



**GEOLANDAR**  
*H/T G056*

- On Road SUV
- Pickup Truck

P25



**GEOLANDAR**  
*SUV*

- On Road SUV

P27



**GEOLANDAR**  
*A/T G015*

- On/Off Road SUV

P29



**GEOLANDAR**  
*M/T+*

- Off Road SUV

P31



**PARADA**  
*Spec-X*

- On Road

P33





# YOKOHAMA

## High Performance Tyre Series Line-up

### ADVAN Series



P09  
High Performance/  
Sports Car

**ADVAN**  
**Sport**  
V105

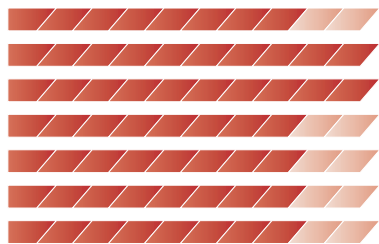
- For high performance cars
- Perfect balance of sport and comfort
- Exceptional handling and braking in dry and wet conditions



P11  
Luxury Saloon

**ADVAN**  
**dB**  
decibel

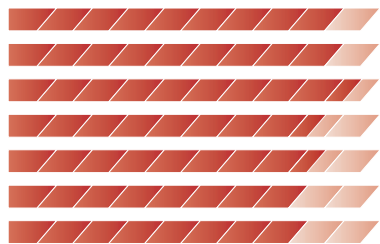
- For luxury saloons
- Ultimate silent and comfortable ride
- Outstanding handling performance



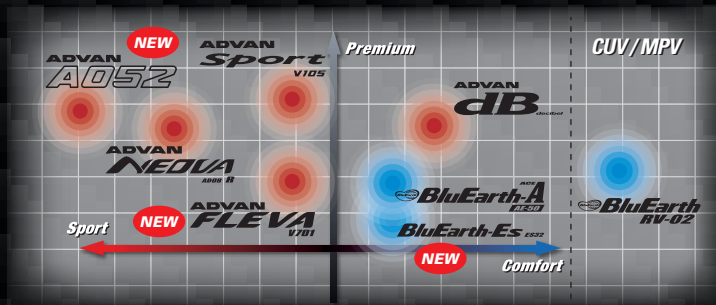
P13  
High Performance/  
Sports Car

**ADVAN**  
**FLEVA**  
V701

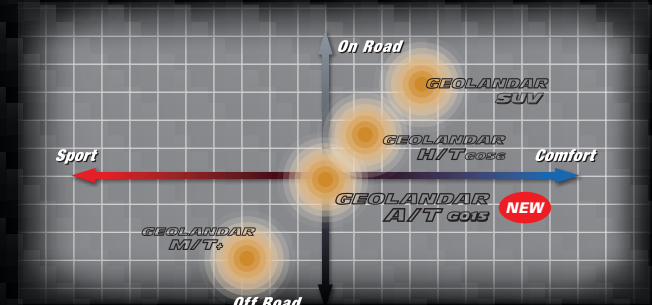
- Perfect balance of sport and comfort
- Exceptional handling and braking in dry and wet conditions



Passenger Car Tyres Positioning Map



SUV Tyres Positioning Map



### PARADA

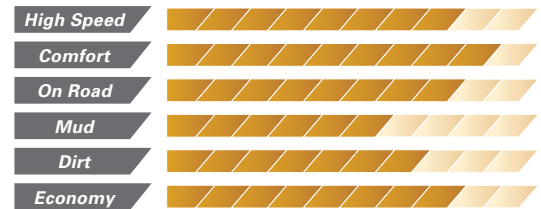
**PARADA**  
**Spec-X**



P33  
SUV

**PARADA**  
**Spec-X**

- Aggressive design meets responsive control
- Ultra high inch-up fitment



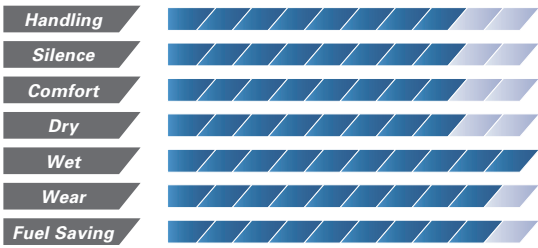
### BluEarth Series



P19  
Family Car

**BluEarth-A**  
ACE  
ACE

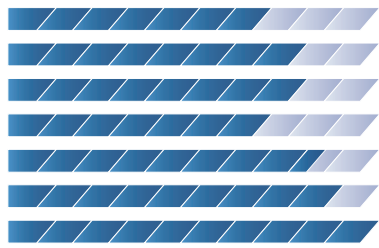
- Exceptional performance in the wet
- Excellent design with complete balance



P21  
Family Car

**BluEarth-Es**  
ES32

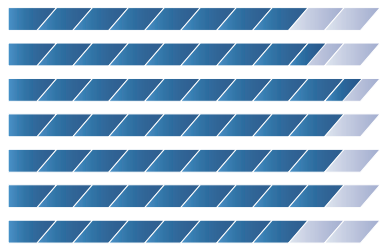
- Enhanced wet and dry grip
- Long tread life and durability
- Fuel saving performance
- Reliable driving by enhanced stability



P23  
CUV  
MPV

**BluEarth**  
**RV-02**

- Quieter ride and reduced wobble
- Resists uneven tread wear
- Enhances durability
- Higher fuel efficiency, enhanced feeling of security in the rain



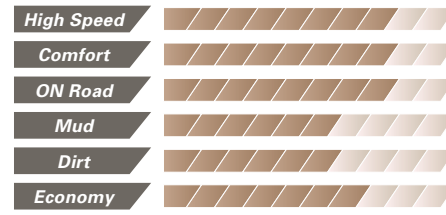
### GEOLANDAR Series



P25  
SUV

**GEOLANDAR**  
**H/T 6056**

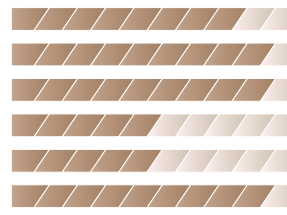
- More comfortable long mileage
- More silent and anti-wear characteristics



P27  
SUV

**GEOLANDAR**  
**SUV**

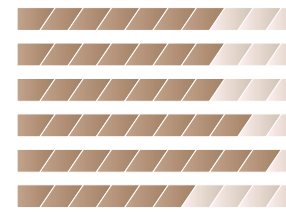
- More silent and comfortable ride
- High-speed handling performance
- Fuel saving



P29  
SUV

**GEOLANDAR**  
**A/T 6015**

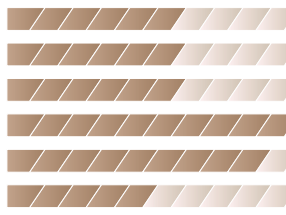
- Greater Durability and Longer Life
- Excellent Wet Grip and Off Road Traction
- Achieves Both Maneuverability and Comfortable Driving



P31  
SUV

**GEOLANDAR**  
**M/T+**

- For off-road SUVs and 4x4s
- Anti-wear on road and anti-chipping off road
- Excellent traction and stability







# ADVAN Sport V105

## Superb Performance Street Tyre



SPEED RANGE

(Y)/Y/W/V

23

22

21

20

19

18

17

16

Orange Oil



Wet



Dry



Comfort



High Speed



Handling



Asymmetric



High Performance / Sports Car

Pattern No.V105

High Performance Saloon

High Performance Sports Car

High Performance SUV

## Handles precisely as intended

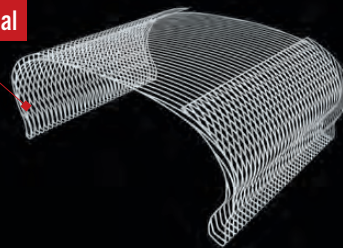
### Matrix body ply structure enhances steering stability

Improves precision in steering without compromising comfort.  
Contributes to excellent performance in the dry by conveying power to the road's surface.

### Mound profile enhances steering stability With mound profile [ADVAN Sport V105]

In order for the ground contact pressure to be proportionate when making contact with the road surface, we optimized the cross-sectional shape of the tread.

High-rigidity rayon carcass material



ROAD SURFACE

Before contact with road surface

After contact with road surface

## A quiet and comfortable ride

Reduces external rolling noise.

### Noise reduction technology

#### Silent Sipe

These thin slits positioned on the inside of the ribs suppress external vehicle noise.

#### Asymmetrical pitch variation

Optimizes pitch on the inside and outside of the tyre to achieve both enhanced maneuverability and quietness.



## Strong grip performance

Powerful grip in the dry and outstanding hydroplaning resistance

### Asymmetrical pattern strengthens wet and dry performance

\*This diagram is a conceptual image.

New compound jointly developed with one of the world's leading automakers Achieves enhanced grip performance through Microsilica + Silica dispersed material.



Inch		Series	Dimensions	OE Mark	Pattern	RF/XL	Overall Diameter (mm)	Approved Rim Width (inch)
23	35	305/35R23 111Y			♭	XL	798	10-12
22	30	295/30R22 103Y			♭	XL	737	10-11
	35	265/35R22 102Y			♭	XL	745	9-10.5
		295/35R22 108Y			♭	XL	765	10-11.5
21	35	295/35R21 107Y	N-2		♭	XL	739	10-11.5
	40	265/40R21 105Y			♭	XL	745	9-10.5
	45	275/45R21 110W			♭	XL	781	8.5-10.5
20	25	285/25ZR20 (93Y)				XL	650	10.5
	30	245/30ZR20 (90Y)				XL	656	8-9
		255/30ZR20 (92Y)				XL	662	8.5-9.5
		255/30ZR20 (92Y)	RO1	‡		XL	662	8.5-9.5
		265/30ZR20 (94Y)				XL	668	9-10
		275/30ZR20 (97Y)				XL	674	9-10
		275/30ZR20 (97Y)	MO	‡		XL	674	9-10
		285/30ZR20 (99Y)				XL	680	9.5-10.5
		295/30ZR20 (101Y)				XL	686	10-11
		305/30ZR20 (103Y)				XL	692	10.5-11.5
	35	225/35ZR20 (90Y)				XL	666	7.5-9
		235/35ZR20 (92Y)				XL	672	8-9.5
		245/35ZR20 (95Y)				XL	680	8-9.5
		245/35ZR20 (95Y)	MO	‡		XL	680	8-9.5
		255/35ZR20 (97Y)				XL	686	8.5-10
		265/35ZR20 (99Y)				XL	694	9-10.5
		275/35ZR20 102Y	RO1	◇		XL	700	9-11
		295/35ZR20 (105Y)	N-0	#		XL	714	10-11.5
	40	245/40ZR20 (99Y)				XL	704	8-9.5
		255/40ZR20 (101Y)	N-0	‡		XL	712	8.5-10
		265/40ZR20 104Y				XL	720	9-10.5
		275/40R20 106Y			♭	XL	728	9-11
		295/40R20 110Y			♭	XL	744	10-11.5
	45	245/45R20 103Y			♭	XL	728	7.5-9
		255/45R20 105W			♭	XL	738	8-9.5
		265/45R20 108Y			♭	XL	746	8.5-10
	50	255/50R20 109Y			♭	XL	764	7-9
		265/50R20 111W			♭	XL	774	7.5-9.5
19	30	255/30ZR19 (91Y)				XL	637	8.5-9.5
		265/30ZR19 (93Y)				XL	643	9-10
		275/30ZR19 (96Y)				XL	649	9-10
		285/30ZR19 (98Y)	MO			XL	655	9.5-10.5
		295/30ZR19 (100Y)				XL	661	10-11
		305/30ZR19 (102Y)				XL	667	10.5-11.5
	35	225/35ZR19 88Y				XL	641	7.5-9
		235/35ZR19 (91Y)				XL	647	8-9.5
		245/35ZR19 (93Y)				XL	655	8-9.5
		255/35ZR19 (96Y)				XL	661	8.5-10
		255/35ZR19 (96Y)	MO			XL	661	8.5-10
		265/35ZR19 (98Y)				XL	669	9-10.5
		275/35ZR19 (100Y)				XL	675	9-11
		275/35ZR19 (100Y)	MO	‡		XL	675	9-11
		285/35ZR19 (99Y)					683	9.5-11
		295/35ZR19 (100Y)	N0	*			689	10-11.5
		295/35ZR19 (104Y)				XL	689	10-11.5
	40	225/40ZR19 (93Y)				XL	663	7.5-9
		235/40ZR19 (92Y)	N0	‡			671	8-9.5
		235/40ZR19 (96Y)				XL	671	8-9.5
		245/40ZR19 (98Y)				XL	679	8-9.5
		245/40ZR19 (98Y)	MO	‡		XL	679	8-9.5
		255/40ZR19 (100Y)				XL	687	8.5-10
		265/40ZR19 (102Y)				XL	695	9-10.5
		265/40ZR19 (98Y)	N0	#			695	9-10.5
		275/40ZR19 (105Y)				XL	703	9-11
		285/40ZR19 (103Y)					711	9.5-11

Inch	Series	Dimensions	OE Mark	Pattern	RF/XL	Overall Diameter (mm)	Approved Rim Width (inch)
19	45	235/45ZR19 95Y				695	7.5-9
		245/45ZR19 98Y				703	7.5-9
		255/45ZR19 (100Y)				713	8-9.5
	50	235/50R19 99W				719	6.5-8.5
		255/50R19 107Y		♭	XL	739	7-9
	55	235/55R19 101V	MO	‡		741	6.5-8.5
		235/55R19 101Y		‡		741	6.5-8.5
		255/55R19 107Y		♭		763	7-9
18	35	245/35ZR18 92Y			XL	629	8-9.5
		255/35ZR18 94Y			XL	635	8.5-10
		265/35ZR18 97Y			XL	643	9-10.5
		275/35ZR18 (99Y)			XL	649	9-11
		285/35R18 97Y	MO	‡		657	9.5-11
	40	215/40ZR18 89Y			XL	629	7-8.5
		225/40R18 92W	0	§	XL	637	7.5-9
		225/40R18 92W	0	†	XL	637	7.5-9
		225/40ZR18 92Y			XL	637	7.5-9
		235/40ZR18 (95Y)			XL	645	8-9.5
		245/40R18 97Y	MO	‡	XL	653	8-9.5
		245/40ZR18 97Y			XL	653	8-9.5
		255/40R18 95Y	MO	‡		661	8.5-10
		255/40R18 99Y	MO	‡	XL	661	8.5-10
		265/40ZR18 (101Y)			XL	669	9-10.5
	45	225/45R18 95Y	MO	‡	XL	659	7-8.5
		225/45ZR18 95Y			XL	659	7-8.5
		235/45ZR18 (98Y)			XL	669	7.5-9
		245/45ZR18 100Y			XL	677	7.5-9
		255/45ZR18 103Y			XL	687	8-9.5
		265/45ZR18 (101Y)				695	8.5-10
		275/45ZR18 (107Y)			XL	705	8.5-10.5
	50	235/50ZR18 101Y			XL	693	6.5-8.5
		245/50R18 100W	MO	≡		703	7-8.5
		245/50ZR18 (104Y)			XL	703	7-8.5
	55	235/55R18 100Y				715	6.5-8.5
		255/55R18 109Y		♭	XL	737	7-9
	60	235/60R18 103V	MO	‡		739	6.5-8.5
		235/60R18 107W		‡	XL	739	6.5-8.5
17	40	245/40R17 91W	MO	‡		628	8-9.5
		255/40ZR17 (98Y)			XL	636	8.5-10
	45	215/45ZR17 91Y			XL	626	7-8
		225/45R17 91W	MO	‡		634	7-8.5
		225/45ZR17 94Y			XL	634	7-8.5
		235/45ZR17 97Y			XL	644	7.5-9
		245/45ZR17 99Y			XL	652	7.5-9
	50	205/50ZR17 93Y			XL	638	5.5-7.5
		225/50R17 94W	MO	‡		654	6-8
		225/50ZR17 98Y			XL	658	6-8
		235/50ZR17 96Y				668	6.5-8.5
	55	205/55ZR17 91Y				658	5.5-7.5
		225/55ZR17 101Y			XL	680	6-8
		235/55R17 99Y				690	6.5-8.5
	60	255/60R17 110W		♭	XL	738	7-9
	65	235/65R17 108W			XL	738	6.5-8.5
16	50	195/50R16 84V	0	‡		603	5.5-7
		225/50R16 92V	MO	‡		632	6-8
		225/50R16 92W	MO	‡		632	6-8
	55	205/55R16 91V	MO	‡		632	5.5-7.5
		205/55R16 91W	MO	‡		632	5.5-7.5

XL = Extra Load  
♭ = V105T Available size  
‡ = V105 Available size  
◇ = V105D Available size  
# = V105W Available size  
\* = V105E Available size  
§ = V105F Available size  
† = V105G Available size  
≡ = V105C Available size  
N-0, N-2, N0 = Porsche Specification  
RO1 = Audi Quattro Specification  
MO = Mercedes Original  
0 = Original Equipment Tyre





ADVAN  
dB<sub>decibel</sub>

The POWER of SILENCE



SPEED RANGE Y/W/V/H 20 19 18 17 16 15



Silence, stable maneuverability and extra-smooth driving comfort for a high degree of balance  
New profile and structure for more stable, quiet driving



Noise generated by air that is compressed between ground contact area and tyre grooves is softened.

#### Variable combination sipes

As the number of blocks touching the ground increases, noise as the tyre rotates decreases.

#### Exclusive structure of ADVAN dB

The sidewall carcass is wound up higher than normal, providing stability and comfort.  
\*Differs depending on size.

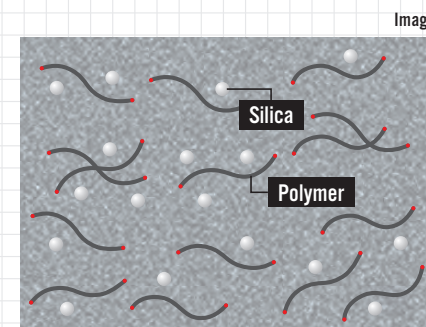
#### Five-pitch variation

Reduces pattern noise to realize a level of noiselessness befitting luxury cars.

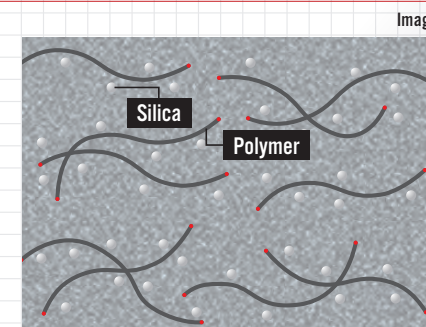
Image of pitch arrangement

## Lower rolling resistance

Reducing the number of polymer ends where waste heat is generated cuts down rolling resistance.



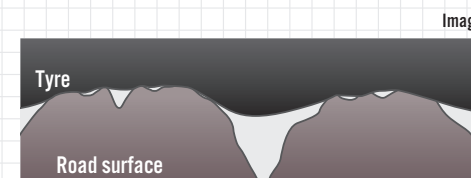
There are numerous short polymers in YOKOHAMA's standard rubber. Being short, each polymer only has average strength. Many polymer ends generate waste heat.



The rubber used in the ADVAN dB features few long high molecular weight polymers. Being long, each polymer boasts high strength. Few polymer ends generate waste heat.

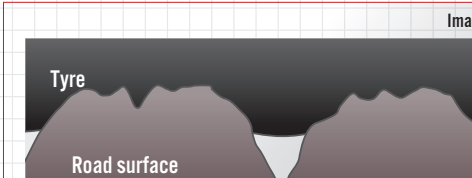
## Greater wet performance

Enhanced ability to hug undulations in the road surface and larger contact area at the micro level while maintaining compound strength for better grip in wet weather.



#### Standard rubber in YOKOHAMA tyres

Tiny protrusions on the road surface create gaps with the tyre, reducing grip performance.



#### ADVAN dB

Microsilica makes the rubber compound more flexible, enhancing adhesion to the road at the micro level.

ADVAN dB		Pattern No. V551					
Inch	Series	Dimensions	OE Mark	Pattern	RF/XL	Overall Diameter (mm)	Approved Rim Width (inch)
20	30	275/30R20 97W			XL	674	9-10
	35	245/35R20 95W			XL	680	8-9.5
		275/35R20 98W				700	9-11
	40	245/40R20 99W			XL	704	8-9.5
19	30	265/30R19 93W			XL	643	9-10
	35	275/30R19 96W			XL	649	9-10
		235/35R19 91W			XL	647	8-9.5
	40	245/35R19 93W			XL	655	8-9.5
18	35	275/35R19 96W				675	9-11
		245/40R19 98W			XL	679	8-9.5
	45	245/45R19 98Y				703	7.5-9
		265/35R18 93W				643	9-10.5
17	40	225/40R18 88W				637	7.5-9
		235/40R18 91W				645	8-9.5
	45	245/40R18 93Y				653	8-9.5
		215/45R18 89W				648	7-8
16	50	225/45R18 91W				656	7-8.5
		235/45R18 94W				668	7.5-9
	55	245/45R18 96W				677	7.5-9
		235/50R18 97W				693	6.5-8.5
15	40	245/50R18 100W				703	7-8.5
		245/40R17 91W				628	8-9.5
	45	205/45R17 84W				616	6.5-7.5
		215/45R17 91W			XL	626	7-8
14	50	225/45R17 91W				634	7-8.5
		225/45R17 91W	0	//		634	7-8.5
	55	235/45R17 94W				644	7.5-9
		245/45R17 95W				650	7.5-

Inch	Series	Dimensions	OE Mark	Pattern	RF/XL	Overall Diameter (mm)	Approved Rim Width (inch)
17	50	215/50R17 91V				648	6-7.5
		215/50R17 91V	0	≡		648	6-7.5
	55	225/50R17 94W				658	6-8
		225/50R17 94W	0	//		658	6-8
16	50	235/50R17 96V				668	6.5-8.5
		215/55R17 94W				667	6-7.5
	55	225/55R17 97W				678	6-8
		235/55R17 99V				690	6.5-8.5
15	50	205/50R16 87V				612	5.5-7.5
		205/55R16 91W				631	5.5-7.5
	55	215/55R16 93W				641	6-7.5
		225/55R16 95W				653	6-8
14	60	205/60R16 92H	0	≡		651	5.5-7.5
		205/60R16 92H	0	=		651	5.5-7.5
	65	205/60R16 92V				651	5.5-7.5
		205/60R16 92V	0	≡		651	5.5-7.5
13	55	215/60R16 95V				664	6-7.5
		225/60R16 98W				676	6-8
	60	235/60R16 100W				688	6.5-8.5
		205/65R16 95H				672	5.5-7.5
12	55	195/55R15 85V				595	5.5-7
		195/60R15 88H				615	5.5-7
	60	205/60R15 91H				627	5.5-7.5
		185/65R15 88H				621	5-6.5
11	65	195/65R15 91H				633	5.5-7
		205/65R15 94H				646	5.5-7.5
	70	215/65R15 96H				659	6-7.5

XL = Extra Load // = V551A Available size ≡ = V551T Available size 0 = Original Equipment Tyre





# ADVAN FLEVA V701

Emotional handling



SPEED RANGE

W/V

20 19 18 17 16 15  
inch inch inch inch inch inch

Orange Oil



Wet



Silence



Handling



High Performance  
Sports Car

Pattern No. V701

High Performance Sports Car

## Cool & Attractive Design

A direction pattern offers an attractive and aggressive look.

### Directional tread pattern

Features a directional tread pattern with more edges facing the road surface. A direction pattern offers an attractive and aggressive look.

### Lightning-shaped straight grooves

The main grooves have more edge components through a lightning-shaped design. In addition to the improved traction this delivers excellent hydroplaning resistance.



### Claw grooves

The claw grooves push aside water at corners. The groove design increases effective groove length.

### Wide sword grooves

The lug grooves have more edge components. The non-penetrating lug groove increases block stiffness and enhances the direct feeling of handling.

## Environmental new sport compound

Several polymers are blended in "nanoBLEND Compound." It was designed for the optimum balance of superior wet grip performance, high fuel efficiency, and wear resistance.

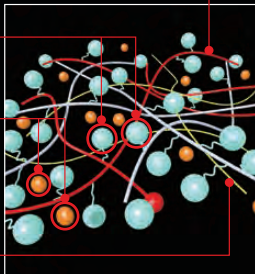
### High fuel-efficient polymer

### Silica

### Orange Oil



### Wear-resistant polymer



## Most advanced ADVAN profile.

- Profile adapted from the ADVAN Sport V105.
- Improvement of the steering stability by high speed range requested by European car manufacturer.
- Improvement of optimization of the ground contact.



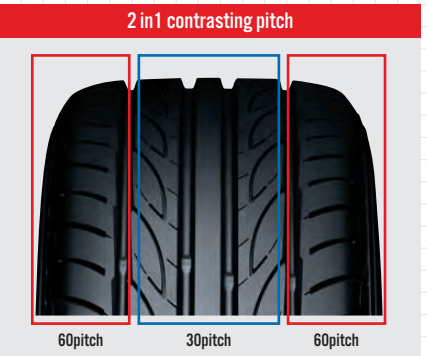
S.drive AS01



ADVAN FLEVA V701

## Differentiating between the pitch layout for the shoulder and center.

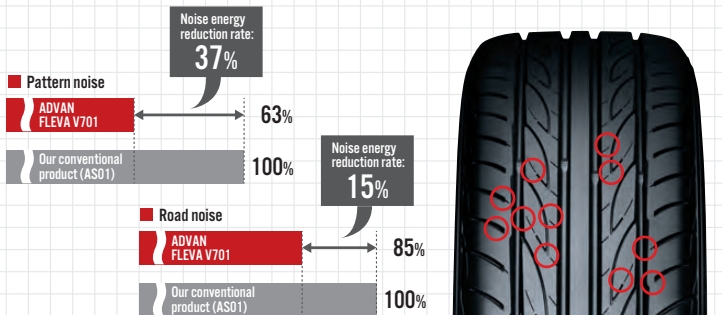
- Increased tread pattern stiffness realizes a more direct feeling to handling.
- Optimized ground contact area.
- Reduces tyre noise, and enhances ride quietness.



## Non-penetrating lug groove pattern increases overall performance.

In contrast to the main groove, the non-penetrating lug grooves increased performance in a variety of ways.

- Suppresses popping noise for a quieter ride.
- Suppresses heel & toe friction, as well as noise caused by tyre friction.
- Increases block stiffness & enhances the direct feeling of handling.



ADVAN FLEVA <sub>V701</sub>			Pattern No. V701		
Inch	Series	Dimensions	RF/XL	Overall Diameter (mm)	Approved Rim Width (inch)
20	30	255/30R20 92W	XL	662	8.5-9.5
	35	225/35R20 90W	XL	664	7.5-9
19	30	255/30R19 91W	XL	637	8.5-9.5
		265/30R19 93W	XL	643	9-10
	35	225/35R19 88W	XL	641	7.5-9
		235/35R19 91W	XL	647	8-9.5
		255/35R19 96W	XL	661	8.5-10
	40	225/40R19 93W	XL	663	7.5-9
45		235/45R19 95W		695	7.5-9
	18 35	215/35R18 84W	XL	606	7-8.5
225/35R18 87W		XL	614	7.5-9	
255/35R18 94W		XL	633	8.5-10	
40	205/40R18 86W	XL	620	7-8	
	215/40R18 89W	XL	628	7-8.5	
	225/40R18 92W	XL	635	7.5-9	
	235/40R18 95W	XL	642	8-9.5	
	245/40R18 97W	XL	651	8-9.5	
	255/40R18 99W	XL	661	8.5-10	
45	225/45R18 95W	XL	656	7-8.5	
50	235/50R18 97V		693	6.5-8.5	
55	235/55R18 100V		715	6.5-8.5	

Inch	Series	Dimensions	RF/XL	Overall Diameter (mm)	Approved Rim Width (inch)
17	40	215/40R17 87W	XL	602	7-8.5
		255/40R17 94W		636	8.5-10
45	205/45R17 88W	XL	614	6.5-7.5	
	215/45R17 91W	XL	626	7-8	
	225/45R17 94W	XL	630	7-8.5	
	235/45R17 97W	XL	640	7.5-9	
50	205/50R17 93W	XL	638	5.5-7.5	
	215/50R17 95W	XL	645	6-7.5	
	225/50R17 98W	XL	654	6-8	
55	205/55R17 91V		658	5.5-7.5	
	215/55R17 94W		667	6-7.5	
	225/55R17 97W		678	6-8	
16 45	195/45R16 84W	XL	580	6-7.5	
	205/45R16 87W	XL	588	6.5-7.5	
50	195/50R16 84V		603	5.5-7	
	205/50R16 87V		612	5.5-7.5	
	225/50R16 92W		629	6-8	
55	195/55R16 87V		620	5.5-7	
	205/55R16 91W		631	5.5-7.5	
15 50	195/50R15 82V		577	5.5-7	
	195/55R15 85V		595	5.5-7	
	205/55R15 88V		604	5.5-7.5	

XL = Extra Load





# ADVAN

## NEOVA AD08 R

Control the Heat,  
Raise the Performance.



SPEED RANGE

W/V

19 18 17 16 15 14 13  
inch inch inch inch inch inch inch

Orange Oil



Dry



High Grip



High Speed



Handling



Directional



High Performance  
/ Sports Car

Pattern No.AD08R

High Performance Sports Car

## MS compound 2R

Lives on in the spirit of YOKOHAMA sports tyres.  
Sustaining a powerful grip using newly developed “MS (Micro Silica) compound 2R”

### ●Improved dry grip

Increases carbon in the compound

### ●Realizes great rigidity and improved resistance to wear

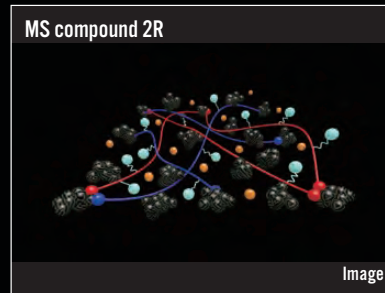
Macromolecule blended polymer

### ●Ensured wet grip

Compound Micro Silica

### ●Enhanced adhesion to road surfaces

With Orange Oil



## An evolution in wet grip

Evolutions in tread pattern and tyre compounding deliver improved wet performance under a wide variety of conditions.

### Uniblok shoulders

Using circumferentially continuous single shoulder blocks without any gaps, rigidity at the tread is increased, ensuring a powerful grip and further shortening lap times.



### Sequential round grooves

Forces from the road surface are spread and dissipated by the round grooves to improve the mileage.  
The positioning of the grooves is also effective in draining water on wet surfaces.

## Driver's impression of ADVAN NEOVA AD08R

### These are very exciting tyres!

Racing Driver **Manabu Orido**

I drove in a test of AD08R tyres that were under development. It felt like the tyres were just sucking tight to the road surface. The tyres gave an easy ride, and gave me very positive control. Even on switchbacks, the tyres felt like they had a superb hold on the road. The current AD08 tyres are great, don't get me wrong, but these new ones seem to give me a better feeling of grip and the overall total sense is one of complete control. These are just right. Very exciting tyres. They've got all the good features of the current ones but take performance a full step further on. AD08R tyres are great!



### Corners are fun to take, even on public roads!

Racing Driver **Nobuteru Taniguchi**

The AD08R's level of grip tenacity is higher by far. First, on the straightaway, you can feel the tyres gripping the road through the steering wheel. And when you're going into a corner, weight moves to the rear and the front end gets lighter. But with a very good grip. I get that secure feeling that "She'll make it through the corner." The biggest advantage is the tremendous control you have right at the critical speed. When you go into a corner at too high a speed, the car still maintains its posture, and you can adjust for the corner. That kind of tyre means a lot to me. You can look forward to something extraordinary in these tyres.



ADVAN NEOVA AD08 R							Pattern No. AD08R						
Inch	Series	Dimensions	Pattern	RF/XL	Overall Diameter (mm)	Approved Rim Width (inch)	Inch	Series	Dimensions	Pattern	RF/XL	Overall Diameter (mm)	Approved Rim Width (inch)
19	30	255/30R19 91W		RF	637	8.5-9.5	17	40	215/40R17 83W			604	7-8.5
		265/30R19 89W			643	9-10			235/40R17 90W			620	8-9.5
		275/30R19 92W			649	9-10			245/40R17 91W			628	8-9.5
		295/30R19 100W		RF	661	10-11			255/40R17 94W			636	8.5-10
		305/30R19 102W		XL	667	10.5-11.5			205/45R17 84W			616	6.5-7.5
									215/45R17 87W			626	7-8
35	35	225/35R19 88W		RF	641	7.5-9	45	45	225/45R17 91W			634	7-8.5
		235/35R19 87W			647	8-9.5			235/45R17 94W			644	7.5-9
		245/35R19 89W			655	8-9.5			245/45R17 95W			652	7.5-9
		255/35R19 92W			661	8.5-10			205/50R17 89W			638	5.5-7.5
		265/35R19 94W			669	9-10.5			205/45R16 83W			590	6.5-7.5
		275/35R19 96W			675	9-11			215/45R16 86W			600	7-8
40	40	245/40R19 94W			679	8-9.5	16	45	225/45R16 89W			608	7-8.5
		285/30R18 93W			629	9.5-10.5			205/50R16 87V			612	5.5-7.5
		295/30R18 94W			635	10-11			225/50R16 92V			632	6-8
		255/35R18 90W			635	8.5-10			205/55R16 91V			632	5.5-7.5
		265/35R18 93W			643	9-10.5			195/50R15 82V			577	5.5-7
		215/40R18 89W			628	7-8.5			205/50R15 86V			587	5.5-7.5
18	30	225/40R18 88W			637	7.5-9	55	55	185/55R15 82V			585	5-6.5
		235/40R18 91W			645	8-9.5			195/55R15 85V			595	5.5-7
		245/40R18 93W			653	8-9.5			205/55R15 87V	✓		607	5.5-7.5
		255/40R18 95W			661	8.5-10			205/60R15 91H	✓		627	5.5-7.5
		265/40R18 101W		RF	669	9-10.5			165/55R14 72V	✓		538	4.5-6
									175/60R14 79H	✓		566	5-6
45	45	215/45R18 89W			651	7-8	15	50	185/60R14 82H	✓		578	5-6.5
		225/45R18 91W			659	7-8.5			195/60R14 86H	✓		590	5.5-7
		245/45R18 96W			677	7.5-9			155/60R13 70H	✓		516	4.5
									165/60R13 73H	✓		528	4.5-6

XL = Extra Load  
V = AD07 Available size  
RF = Reinforced





# ADVAN A052

All New Ultimate Street Sport Type



SPEED RANGE

Y/W

18  
inch 17  
inch 16  
inch

Orange Oil



Dry



High Grip



High Speed



Handling



High Performance  
/Sports Car

Pattern No.A052

High Performance Sports Car

## Asymmetric tread pattern

### Two Straight Grooves

By locating 2 main straight grooves in the in-side.

Enhance straight-line stability.  
And superior anti-hydroplaning.



### High-rigidity Tread Rib

Locating 2 main grooves at in-side, we realize the expansion of the contact area of the out-side.

Delivering powerful cornering capability.

### Straight Thin Groove

Locating a straight thin groove in the outside part where receive big pressure in the corner.

Enhance efficiently dissipate heat.  
Preventing time-drop.

## Adopting Mound-Profile

For controlling the contact pressure of each block.  
ADVAN A052 is adopting "Mound-Profile" same like ADVAN Sport V105.

Balancing wet performance with  
the stability in the high speed area.



## All new Sport Compound. Specially Developed for A052.

Extreme Grip  
(Dry&Wet)

MS Technology



Fuel Efficiency

BluEarth Technology

Ultra High level combination of each technology.

## Positioning Map & Target User

### Sport Performance

High Grip / Circuit / Lap Time



ADVAN  
A050  
(M/MH/H)



ADVAN A050 has several compounds which are fitted running distance or temperature range.  
We recommend A050 to the user who want to win the race seriously.

ADVAN  
A052



ADVAN A052 keeps both high driving performance and environmental performance at a high level.  
The handling performance is excellent. As well as a Pro-driver, it is suitable for all people who want to enjoy motor sports.  
Compared with ADVAN NEOVA AD08R, we recommend ADVAN A050 to more circuit-oriented user.

ADVAN  
NEOVA  
AD08 R



ADVAN AD08R is a street sport tyre with aggressive pattern design. This is an almighty performance tyre corresponding from street to circuit. Compared with ADVAN A052, we recommend ADVAN NEOVA AD08R to more street-oriented user.

### Sport Performance

High Grip / Circuit / Lap Time



< Sport Performance >

A052 is higher product of NEOVA and lower product of A050.

ADVAN  
A052

Pattern No. A052

Inch	Series	Dimensions	RF/XL	Overall Diameter (mm)	Approved Rim Width (inch)
18	30	295/30R18 98Y	XL	637	10-11
		315/30R18 98Y		649	10.5-11.5
35		255/35R18 94Y	XL	637	8.5-10
		265/35R18 97Y	XL	645	9-10.5
		295/35R18 103Y	XL	666	10-11.5
40		225/40R18 92Y	XL	638	7.5-9
		235/40R18 95Y	XL	647	8-9.5
		245/40R18 97Y	XL	655	8-9.5
		255/40R18 99Y	XL	664	8.5-10
		265/40R18 101Y	XL	672	9-10.5

Inch	Series	Dimensions	RF/XL	Overall Diameter (mm)	Approved Rim Width (inch)
17	40	255/40R17 98W	XL	639	8.5-10
		205/45R17 88W	XL	618	6.5-7.5
45		215/45R17 91W	XL	628	7.5-8
		225/45R17 94W	XL	637	7-8.5
		235/45R17 97W	XL	647	7.5-9
16	45	225/45R16 93W	XL	611	7-8.5
		205/50R16 91W	XL	615	5.5-7.5
		225/50R16 96W	XL	635	6-8
		205/55R16 94W	XL	635	5.5-7.5

XL = Extra Load



# **BluEarth-A** AE-50

Extreme Grip with  
 environmental performance



SPEED RANGE

W/V/H/S

20 19 18 17 16 15 14 13 12  
 inch inch inch inch inch inch inch inch inch

Orange Oil



Pattern No. AE50

Large Family Car

Small Family Car

## Secure grip on rainy days

AE-50 special compound that elicits exceptional maneuverability.

### Use of Double Silica

BluEarth-A tyres employ two types of  
 high-quality silica with different  
 properties.  
 This optimizes the compounding ratio to  
 achieve both superb wet and  
 fuel-efficient performance.

Fuel SAVING

Wet GRIP



Double silica



Orange Oil



Wet GRIP

BLEND Polymer

Features sufficient wear resistance.

Wear resistance

Wet GRIP

## Quietness for a more comfortable ride

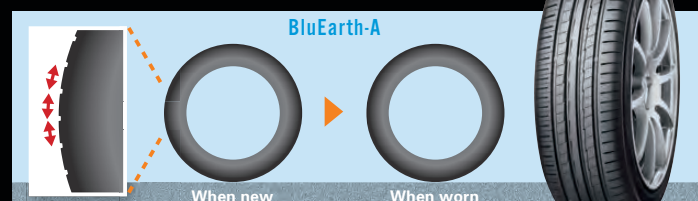
AE-50 special compound that elicits exceptional maneuverability.

Large pitch variation

Small pitch variation



Standard pitch in YOKOHAMA Tyres



BluEarth-A

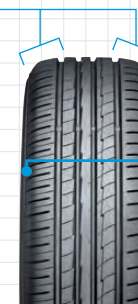
## Total balanced performance

AERO dynamic technology reduces air resistance.

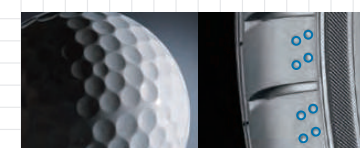
### Asymmetrical tread pattern

The inner side of the tyre includes sipes on the  
 shoulder to suppress uneven wear.  
 The outer side of the tyre incorporates wide  
 non-penetrating grooves on the shoulder block to  
 realize enhanced stability when cornering.

INSIDE



OUTSIDE



### Dimples on shoulder

A dimpled design on the shoulder  
 reduces tyre air resistance.  
 This contributes to greater fuel-efficient  
 performance.

Pattern No. AE50															
Inch	Series	Dimensions	OE Mark	Pattern	RF/XL	Overall Diameter (mm)	Approved Rim Width (inch)	Inch	Series	Dimensions	OE Mark	Pattern	RF/XL	Overall Diameter (mm)	Approved Rim Width (inch)
20	30	235/30R20 88W			XL	650	8.5	16	45	195/45R16 80W				580	6-7.5
		275/30R20 97W			XL	674	9-10			195/45R16 84V			XL	582	6-7.5
19	30	245/35R20 95W			XL	680	8-9.5	50		205/45R16 87W			XL	590	6.5-7.5
		255/30R19 91W			XL	637	8.5-9.5			185/50R16 81H	0			594	5-6.5
35		265/30R19 93W			XL	643	9-10	55		195/50R16 84V				603	5.5-7
		275/30R19 96W			XL	649	9-10			195/50R16 88V			XL	603	5.5-7
40		215/35R19 85W			XL	633	7-8.5	60		205/50R16 87V				612	5.5-7.5
		225/35R19 88W			XL	641	7.5-9			205/50R16 87W				612	5.5-7.5
45		235/35R19 91W			XL	647	8-9.5	65		185/55R16 83V				610	5-6.5
		245/35R19 93W			XL	655	8-9.5			195/55R16 87H				621	5.5-7
50		255/35R19 92W				661	8.5-10	70		195/55R16 87V				619	5.5-7
		275/35R19 100W			XL	675	9-11			205/55R16 91V				630	5.5-7.5
55		225/40R19 89W				663	7.5-9	75		205/55R16 91W				630	5.5-7.5
		245/40R19 98W			XL	679	8-9.5			205/55R16 94V			XL	631	5.5-7.5
60		225/45R19 96W			XL	685	7-8.5	80		215/55R16 93V				639	6-7.5
		245/45R19 98W				703	7.5-9			215/55R16 97H			XL	641	6-7.5
65		255/35R18 94W			XL	635	8.5-10	90		215/55R16 97W			XL	641	6-7.5
		265/35R18 97W			XL	643	9-10.5			225/55R16 95V				654	6-8
70		215/40R18 89W			XL	628	7-8.5	100		225/55R16 99W			XL	652	6-8
		225/40R18 92W			XL	637	7.5-9			175/60R16 82H				616	5-6
75		235/40R18 95W			XL	645	8-9.5	110		185/60R16 86H				628	5-6.5
		245/40R18 97W			XL	653	8-9.5	120		195/60R16 89H				640	5.5-7
80		275/40R18 99W				677	9-11			205/60R16 92H				653	5.5-7.5
		225/45R18 91W				659	7-8.5	130		205/60R16 92V				651	5.5-7.5
85		235/45R18 94W				668	7.5-9			205/60R16 96W			XL	651	5.5-7.5
		245/45R18 100W			XL	677	7.5-9	140		215/60R16 95H				664	6-7.5
90		245/45R18 96W				677	7.5-9			215/60R16 99V			XL	664	6-7.5
95		215/50R18 92V				673	6-7.5	150		225/60R16 98H				676	6-8
		225/50R18 95W				683	6-8	160		205/65R16 95H				672	5.5-7.5
100		235/50R18 97W				693	6.5-8.5			215/65R16 98H				683	6-7.5
105		205/40R17 80H	0			595	7-8	170		185/65R15 82V				585	5-6.5
		245/40R17 91W				628	8-9.5	180		195/55R15 85V				595	5.5-7
110		185/45R17 78H	0			599	6.5-7	190		175/60R15 81H				591	5-6
		205/45R17 88W			XL	616	6.5-7.5	200		185/60R15 84H				603	5-6.5
115		215/45R17 91W			XL	626	7-8			195/60R15 88H				615	5.5-7
		225/45R17 91W				634	7-8.5	210		195/60R15 88V				615	5.5-7
120		225/45R17 94V			XL	634	7-8.5			205/60R15 91V				627	5.5-7.5
125		225/45R17 94W			XL	634	7-8.5	220		175/65R15 84H				609	5-6
		235/45R17 97W			XL	644	7.5-9			185/65R15 88H				621	5-6.5
130		245/45R17 99W			XL	652	7.5-9	230		185/65R15 88S	0			621	5-6.5
		205/50R17 93V			XL	638	5.5-7.5	240		195/65R15 91H				635	5.5-7
135		205/50R17 93W			XL	638	5.5-7.5			195/65R15 91V				634	5.5-7
		215/50R17 91V				645	6-7.5	250		205/65R15 94H				647	5.5-7.5
140		215/50R17 95W			XL	648	6-7.5			185/50R14 77V		∞		542	5-6.5
145		225/50R17 94W				654	6-8	260		175/65R14 82H				584	5-6
		225/50R17 98W			XL	658	6-8			185/65R14 86H				596	5-6.5
150		205/55R17 91V				658	5.5-7.5	270		175/50R13 72V		∞		506	5-6
		215/55R17 94V				667	6-7.5	280		175/60R13 77H		∞		540	5-6
155		215/55R17 94W				668	6-7.5			185/60R13 80H		∞		552	5-6.5
		225/55R17 101W			XL	680	6-8	290		165/60R12 71H		∞		503	4.5-6
160		225/55R17 97W				678	6-8								
		215/60R17 96H				690	6-7.5								

XL = Extra Load  
 ∞ = A539 Available size  
 0 = Original Equipment Tyre



# BluEarth-Es ES32

Grip the Earth.



SPEED RANGE

W/V/H/T

18

17

16

15

14

13

Orange Oil



Wet



Comfort



Mileage



Fuel Saving



Family Car

Pattern No.ES32

Large Family Car

Small Family Car

## The all new Powerful and Comfortable Tread Design

### Extra Powerful Profile

High rigidity and tough, Anti-uneven wear

### Multiple Powerful Shoulder

Combination of deep lugs and sipes  
Stability, Evacuation, Anti-uneven wear

### 5 Pitch Tread Pattern

Low pattern noise,  
Anti-uneven wear



### Lightning Groove

High rigidity and proper edge volume  
Safety, Drainage on Wet roads

### Wide Straight Grooves

Anti-Hydro, Water draining on Wet braking  
Straight driving and handling

Simple and Powerful shoulder block design delivers reliable grip and excellent durability.



Optimised tread design adopted for each size width.



ES32 standard design  
WIDTH: 145-215



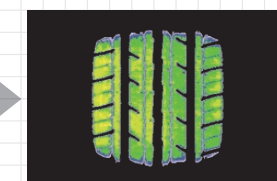
ES32A wide-design  
WIDTH: 225 and more

## The all new Powerful and Comfortable Tread Design

Contact pressure homogenization and improvement of uneven wear.



Current standard tyre AE01

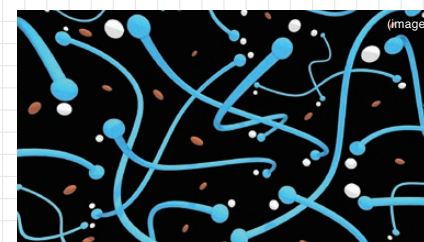


BluEarth-Es ES32

## nano BLEND compound

- Polymer having super low rolling resistance characteristics.
- Bonded with MICRO Silica.

The technology to control chemical reactions of each compounds by nano level.



### Micro Silica

Well dispersed silica controls excessive heat for wet grip and long mileage

### Blend Polymer

Mixed super low rolling resistance polymer bonded with MICRO Silica.

### Orange Oil

Makes tyre softer to get more contact surface on wet and dry.

Orange Oil



BluEarth-Es ES32							Pattern No. ES32	
Inch	Series	Dimensions	Pattern	RF/XL	Overall Diameter (mm)	Approved Rim Width (inch)		
18	40	225/40R18 92W	❖	XL	637	7.5-9		
		235/40R18 95W	❖	XL	645	8-9.5		
17	40	205/40R17 84V		XL	596	7-8		
		215/40R17 87V		XL	604	7-8.5		
		245/40R17 91V	❖		628	8-9.5		
		205/45R17 84V			616	6.5-7.5		
	45	215/45R17 91V		XL	626	7-8		
		225/45R17 94V	❖	XL	634	7-8.5		
		235/45R17 97V	❖	XL	644	7.5-9		
		215/50R17 95V		XL	648	6-7.5		
	50	225/50R17 94V	❖		658	6-8		
		215/55R17 94V			668	6-7.5		
16	45	195/45R16 80V			582	6-7.5		
		205/45R16 83V			590	6.5-7.5		
		195/50R16 84V			602	5.5-7		
		205/50R16 87V			612	5.5-7.5		
	55	185/55R16 83V			610	5-6.5		
		195/55R16 87V			620	5.5-7		
		205/55R16 91H			632	5.5-7.5		
		205/55R16 91V			632	5.5-7.5		
	60	215/55R16 93H			642	6-7.5		
		215/55R16 97V		XL	642	6-7.5		
		225/55R16 95V	❖		654	6-8		
		175/60R16 82H			616	5-6		
	65	195/60R16 89H			640	5.5-7		
		205/60R16 92H			652	5.5-7.5		
		215/60R16 95H			664	6-7.5		
		215/60R16 99H		XL	664	6-7.5		
	70	215/60R16 99V		XL	664	6-7.5		
		225/60R16 98V	❖		676	6-8		
		205/65R16 95H			672	5.5-7.5		
15	50	195/50R15 82V			577	5.5-7		
		175/55R15 77V			573	5-6		
		185/55R15 82H			585	5-6.5		
		185/55R15 82V			585	5-6.5		
	55	195/55R15 85H			595	5.5-7		
		195/55R15 85V			595	5.5-7		

Inch	Series	Dimensions	RF/XL	Overall Diameter (mm)	Approved Rim Width (inch)
15	60	155/60R15 74H		567	4.5-5.5
		165/60R15 77H		579	4.5-6
		175/60R15 81H		591	5-6
		185/60R15 84H		603	5-6.5
		185/60R15 88H	XL	603	5-6.5
		195/60R15 88H		615	5.5-7
		205/60R15 91H		627	5.5-7.5
		145/65R15 72H		569	4-5
		175/65R15 84H		609	5-6
		185/65R15 88H		621	5-6.5
	65	185/65R15 88T		621	5-6.5
		195/65R15 91H		635	5.5-7
		195/65R15 91T		635	5.5-7
		195/65R15 91V		635	5.5-7
		195/65R15 95V	XL	635	5.5-7
		205/65R15 94H		647	5.5-7.5
		205/65R15 99H	XL	647	5.5-7.5
		165/55R14 72H		538	4.5-6
		165/60R14 75T		554	4.5-6
		185/60R14 82H		578	5-6.5
	65	195/60R14 86H		590	5.5-7
		155/65R14 75T		558	4.5-5.5
		165/65R14 79T		570	4.5-6
		175/65R14 82H		584	5-6
		175/65R14 82T		584	5-6
		185/65R14 86H		596	5-6.5
		185/65R14 86T		596	5-6.5
		195/65R14 89H		610	5.5-7
		165/70R14 81T		588	4-5.5
		165/70R14 85T	XL	588	4-5.5
	70	175/70R14 84H		602	4.5-6
		175/70R14 84T		602	4.5-6
		185/70R14 88H		616	4.5-6
		185/70R14 88T		616	4.5-6
		195/70R14 91H		630	5-6.5
13	70	175/70R13 82T		576	4.5-6

XL = Extra Load

❖ = ES32A Available size



# BluEarth RV-02

A BluEarth grand touring tyre tuned for CUVs & MPVs.



**SPEED RANGE**    **W/V/H**    20 19 18 17 16 15  
inch inch inch inch inch inch    Orange Oil

Wet
 Silence
 Handling
 Comfort
 Mileage
 Fuel Saving
 CUV/MPV

**Pattern No.RV02**  
 CUV  
 MPV

## Anti-wobble and low noise

Exclusively developed asymmetric pattern.

**Twin Power Ribs**

- Provides highly stable handling
- Diagonally cut grooves improve water-drainage performance

**Power Inside Shoulder**

- Provides highly stable handling
- Reduces uneven wear

**Four Straight Grooves**

- Improve straight-line driving stability
- Excellent hydroplaning resistance

**Grand Silent Shoulder**

- Designed with noise-suppressing grooves
- Reduces uneven wear and wobbling

**3D Sipes**

- Two types of differently shaped sipes disperse tyre noise
- Reduces uneven tread wear

**Silent Edge Grooves**

- Grooves cut into the inner sides of the ribs reduce the pass by noise

## Dimple and smooth shoulder design



## Anti-uneven wear

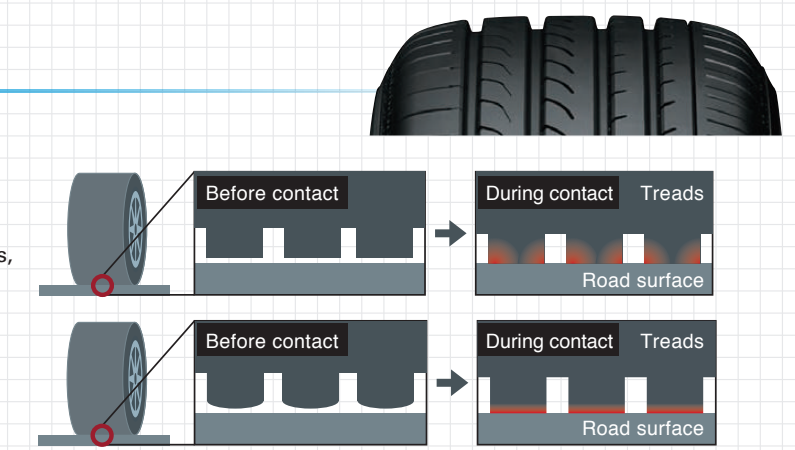
Mound Profile

[Our standard tyres]

pressure is applied disproportionately to both sides of the ribs, which leads to uneven wear.

[BluEarth RV-02]

evenly distributed contact pressure helps prevent uneven wear.



**Cornering**

**RV-02**

**Conventional**

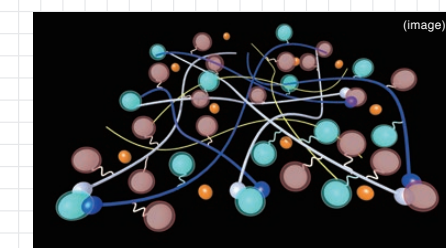
**Lowered**

**RV-02**

**Conventional**

## Excellent wet performance

Nano-blend rubber designed specially for BluEarth RV-02 tyres (simulated image showing molecular structure)



**Double Silica**


Two types of silica are used: silica to enhance braking performance on wet surfaces, and silica to improve fuel efficiency.

**Blend Polymer**

A multiple-polymer blend is used in pursuit of improved braking on wet surfaces, lower fuel consumption and increased wear resistance.

**Orange Oil**

Orange oil is used to make the rubber more pliable so that it contacts the road surface more closely, which improves braking performance.

 Pattern No. <b>RV02</b>					
Inch	Series	Dimensions	RF/XL	Overall Diameter (mm)	Approved Rim Width (inch)
20	35	245/35R20 95W	XL	683	8-9.5
	40	245/40R20 99W	XL	706	8-9.5
19	40	225/40R19 93W	XL	666	7.5-9
		245/40R19 98W	XL	681	8-9.5
	45	225/45R19 96W	XL	687	7-8.5
		245/45R19 98W		705	7.5-9
	55	225/55R19 99V		731	6-8
18	45	215/45R18 93W	XL	654	7.5-8
		225/45R18 95W	XL	661	7-8.5
	50	225/50R18 95V		682	6-8
		235/50R18 97V		693	6.5-8.5
	55	215/55R18 95V		691	6-7.5
		215/55R18 99V	XL	691	6-7.5
		225/55R18 98V		704	6-8
		235/55R18 100V		715	6.5-8.5
	60	225/60R18 100V		727	6-8
		235/60R18 103W		739	6.5-8.5
65	235/65R18 106V		763	6.5-8.5	

Inch	Series	Dimensions	RF/XL	Overall Diameter (mm)	Approved Rim Width (inch)
17	45	215/45R17 91W	XL	626	7.5-8
	50	215/50R17 95V	XL	648	6-7.5
	55	205/55R17 91V		657	5.5-7.5
		215/55R17 94V		665	6-7.5
		225/55R17 97W		678	6-8
		235/55R17 103W	XL	690	6.5-8.5
	60	215/60R17 96H		689	6-7.5
		225/60R17 99H		703	6-8
	65	225/65R17 106V	XL	724	6-8
16	60	195/60R16 89H		637	5.5-7
		205/60R16 92H		652	5.5-7.5
		215/60R16 95H		664	6-7.5
	65	205/65R16 95H		671	5.5-7.5
		215/65R16 98H		689	6-7.5
15	65	195/65R15 91H		636	5.5-7
		205/65R15 94H		646	5.5-7.5
		215/65R15 96H		663	6-7.5

XL = Extra Load

XL = Extra Load





# GEOLANDAR H/T G056

Long-lasting comfort,  
everywhere you go.



SPEED RANGE

V/H/T/S

20

19

18

17

16

15

Orange Oil



ON Road



Wet



Comfort



ON Road



Mileage



SUV

Pattern No. G056

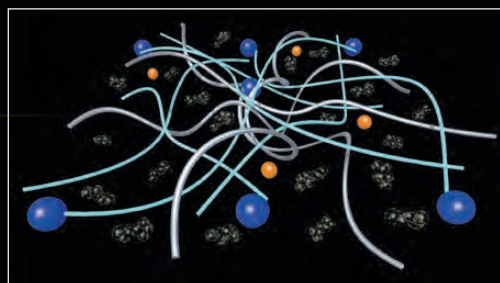
On Road SUV

Pickup Truck

## Achieves 21% better mileage

A deeper tread depth for the pattern design and low Tg polymer to strengthen the binding force of carbon and silica lead to better wear performance.

Image of compound structure



## Achieves 3% shorter distance in terms of wet braking performance

A newly developed tread pattern design with four main grooves improves drainage performance.  
A compound combining silica and YOKOHAMA's original Orange Oil technology improves wet grip performance.

Interlocking shoulder block



## Pattern noise is 0.6dB lower

A five-pitch variation reduces disturbing noise, which interrupts a comfortable driving experience.

Image of five-pitch variation

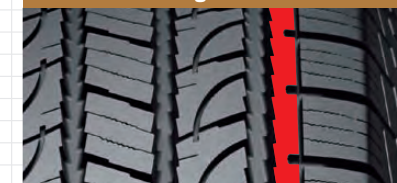


## Realizes 13% improved handling performance

For handling performance, the yaw angle at lane change has been lowered by 13%. YOKOHAMA achieved this by enhancing tread pattern stiffness through an interlocking shoulder block and 3-D sipes. This means stable handling even with SUVs / Pick-ups, which often carry baggage.



Interlocking shoulder block



3-D sipes

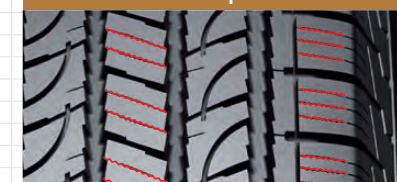
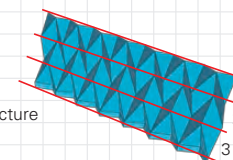


Image of 3-D sipe structure



GEOLANDAR  
H/T G056

Diseño No. G056

Inch	Series	Dimensions	Pattern	RF/XL	Side	Overall Diameter (mm)	Approved Rim Width (inch)
20	50	285/50R20 112V			RBL	794	8-10
	55	P275/55R20 111H			RBL	810	7.5-9.5
	60	245/60R20 107H			RBL	802	7-8.5
19	60	P275/60R20 114H			RBL	838	7.5-9.5
	60	P255/60R19 108H			RBL	789	7-9
	60	P245/60R18 104H			RBL	751	7-8.5
18	60	P255/60R18 107H	◆		RBL	763	7-9
	60	255/60R18 108H	■		RBL	763	7-9
	60	255/60R18 112V		XL	RBL	763	7-9
17	60	P265/60R18 109H			RBL	775	7.5-9.5
	60	265/60R18 110H			RBL	775	7.5-9.5
	60	275/60R18 113H			RBL	787	7.5-9.5
16	60	285/60R18 116H			RBL	799	8-10
	65	P255/65R18 109T			RBL	789	7-9
	65	P265/65R18 112T			RBL	801	7.5-9.5
15	65	P275/65R18 114T			OWL	815	7.5-9.5
	70	P255/70R18 112H			RBL	815	6.5-8.5
	70	265/70R18 116H	☐		RBL	826	7-9
14	70	P265/70R18 114S			OWL	829	7-9
	75	P245/65R17 105T			RBL	750	7-8.5
	75	P255/65R17 108T			OWL	764	7-9
13	75	255/65R17 114H		XL	RBL	764	7-9
	75	P265/65R17 110T			OWL	776	7.5-9.5
	75	265/65R17 112H			RBL	776	7.5-9.5
12	75	275/65R17 115H			RBL	790	7.5-9.5
	75	285/65R17 116H			RBL	802	8-10
11	70	225/70R17 108T		XL	RBL	748	6-7.5
	70	P235/70R17 108T		XL	OWL	762	6-8
	70	P245/70R17 108H			OWL	776	6.5-8
10	70	P255/70R17 110T			OWL	790	6.5-8.5

Inch	Series	Dimensions	Pattern	RF/XL	Side	Overall Diameter (mm)	Approved Rim Width (inch)
17	70	P265/70R17 113T			OWL	804	7-9
	70	265/70R17 115S			RBL	804	7-9
	65	255/65R16 109H			RBL	738	7-9
16	65	P255/65R16 106T			OWL	738	7-9
	70	P235/70R16 104T			OWL	736	6-8
	70	P245/70R16 106H			OWL	750	6.5-8
15	70	245/70R16 111H		XL	RBL	750	6.5-8
	70	P255/70R16 109T			OWL	764	6.5-8.5
	70	255/70R16 111H			RBL	764	6.5-8.5
14	70	P265/70R16 111T			OWL	778	7-9
	70	265/70R16 112H			RBL	778	7-9
	70	275/70R16 114H			RBL	792	7-9
13	75	P225/75R16 106T		XL	RBL	744	6-7.5
	75	P235/75R16 109T		XL	OWL	758	6-8
	75	P245/75R16 109T			OWL	774	6.5-8
12	75	P265/75R16 114T			OWL	804	7-9
	75	265/75R16 116H			RBL	804	7-9
	75	215/70R15 98H			RBL	683	5.5-7
11	70	255/70R15 108H			RBL	739	6.5-8.5
	70	255/70R15C 112/110S			RBL	739	6.5-8.5
	70	265/70R15 112H			RBL	753	7-9
10	75	235/75R15 109H		XL	RBL	733	6-8
	75	P235/75R15 108T		XL	OWL	733	6-8
	80	215/80R15 102S			RBL	725	5.5-7
9	75	30X9.50R15 104S			OWL	750	6.5-8.5
	75	31X10.50R15 109S			OWL	775	7-8.5

XL = Extra Load  
◆ = G056A Available size and this is OE  
■ = G056B Available size and this is OE  
☐ = G051 Available size

RBL = Raised Black Letter  
OWL = Outlined White Letter



# GEOLANDAR SUV

Dynamic in Comfort and Silence



SPEED RANGE

V/H/T

20 19 18 17 16 15  
inch inch inch inch inch inch

Orange Oil



ON Road



Wet



Comfort



ON Road



Mileage



Fuel Saving



SUV

Pattern No. G055

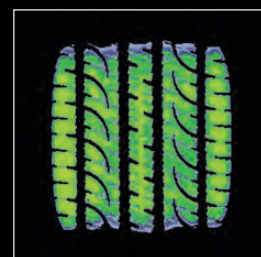
On Road SUV

## Fuel-efficient profile that minimizes uneven wear

The profile employed suppresses tyre distortion to provide even road contact area and reduce energy loss when driving. This helps minimize uneven wear.



GEOLANDAR H/T-S



GEOLANDAR SUV

## High-rigidity profile enabling exceptional handling performance

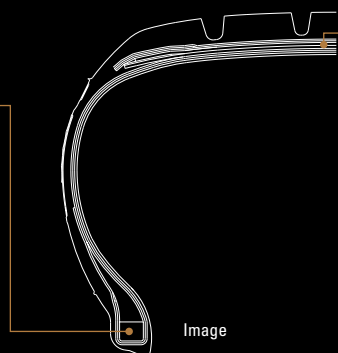
Enhancing the strength of the sidewall rubber for tall SUV tyres and reinforcing the shoulder part of the tread has increased the stability of the road contact area of the tyre. The high rigidity enables superior handling and peace-of-mind at high speeds.

High-elasticity filler exclusively for the GEOLANDAR SUV brand tyre

Steering stability

Comfort

Employs high-elasticity filler for exceptional flexibility that meets the needs of SUV tyres with large section width.



Image

Nylon full cover

Reduced noise

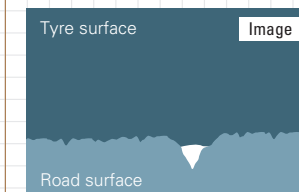
Steering stability

A nylon cover layer has been employed for the entire upper portion of the belt material. This helps stop the belt from slipping up and improves steering stability and quietness at high speeds.

## Orange Oil compound that provides reassuring grip in the wet

The use of a tread pattern with exceptional water drainage capability and Orange Oil compound, which makes it more difficult for the rubber to harden even at low temperatures, enables safe and secure driving on rainy days.

Tyre adhering to road surface



**Standard rubber**  
Does not adhere to the minute gaps in the road surface.



**nano BLEND compound**  
Adheres to road surface and enhances grip performance.



Zig-zag grooves

- Better wet performance
- Reduced external vehicle noise



New tyre



With 50% wear

Geometrically optimized sipes

- Better wet performance
- Reduced noise

4 wide straight grooves

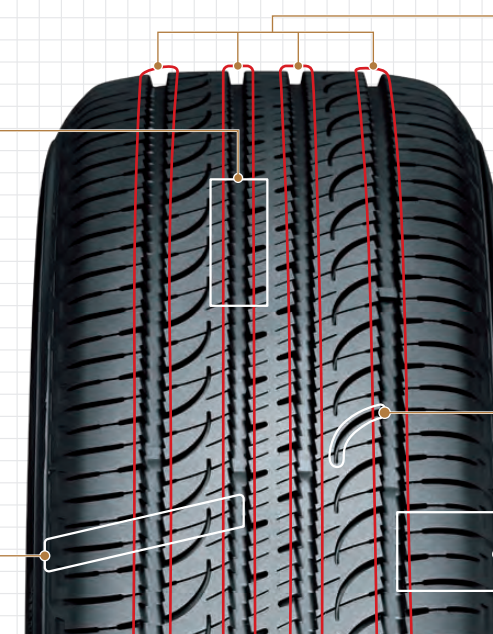
- Better wet performance
- Aquaplaning performance

Dolphin grooves

- Better wet performance

Cross supporting shoulder blocks

- Better wet performance
- Better handling performance
- Reduced noise



GEOLANDAR SUV

Diseño No. G055

Inch	Series	Dimensions	Pattern	RF/XL	Side	Overall Diameter (mm)	Approved Rim Width (inch)
20	50	245/50R20 102V			BL	754	7-8.5
		265/50R20 111V		XL	BL	774	7.5-9.5
	55	235/55R20 102V			BL	766	6.5-8.5
		235/50R19 99V			BL	719	6.5-8.5
19	50	235/50R19 99V			BL	731	6-8
		225/55R19 99V			BL	741	6.5-8.5
	55	235/55R19 101V			BL	753	7-8.5
		245/55R19 103V			BL	763	6.5-8.5
18	55	215/55R18 99V		XL	BL	693	6-7.5
		225/55R18 98V			BL	705	6-8
	60	235/55R18 100V			BL	715	6.5-8.5
		255/55R18 109V		XL	BL	737	7-9
	65	225/60R18 100H			BL	727	6-8
		235/60R18 107V		XL	BL	739	6.5-8.5
	70	245/60R18 105H			BL	751	7-8.5
		225/65R18 103H			BL	749	6-8
	75	235/65R18 106H			BL	763	6.5-8.5
		P235/65R18 104T			BL	763	6.5-8.5
17	55	215/55R17 94V			BL	668	6-7.5
		225/55R17 97V			BL	680	6-8
	60	235/55R17 99H			BL	690	6.5-8.5

Inch	Series	Dimensions	Pattern	RF/XL	Side	Overall Diameter (mm)	Approved Rim Width (inch)
17	60	215/60R17 96H			BL	690	6-7.5
		225/60R17 99H			BL	702	6-8
	65	235/60R17 102V			BL	714	6.5-8.5
		255/60R17 106H			BL	738	7-9
	70	225/65R17 102H			BL	724	6-8
		235/65R17 108V		XL	BL	738	6.5-8.5
	75	245/65R17 107H		0	BL	750	7-8.5
		215/70R17 101H			BL	734	5.5-7
16	60	215/60R16 95H		3	RBL	664	6-7.5
		235/60R16 104V		XL	BL	688	6.5-8.5
	65	215/65R16 98H			BL	686	6-7.5
		215/65R16 98H			BL	686	6-7.5
	70	225/65R16 100H			BL	698	6-8
		215/70R16 100H			BL	708	5.5-7
	75	225/70R16 103H			BL	722	6-7.5
		235/70R16 106H			BL	736	6-8
15	70	205/70R15 96H			BL	669	5-7
		225/70R15 100H			BL	697	6-7.5

XL = Extra Load  
0 = G055E Available size and this is OE  
3 = G051 Available size  
7 = G051G Available size and this is OE

0 = Original Equipment Tyre  
BL = Black Letter  
RBL = Raised Black Letter





# GEOLANDAR A/T G015

## High dimension All-Terrain tyre



SPEED RANGE

H/T/S/R

20 18 17 16 15 14  
inch inch inch inch inch inch

Orange Oil



ON & OFF Road



Wet



Silence



Comfort



Mileage



SUV

Pattern No. G015

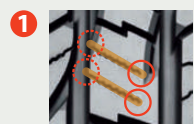
On & Off Road SUV

## Greater Durability and Longer Life. Excellent Wet Grip and Off Road Traction.

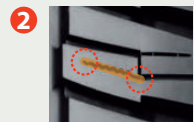
### 3-D shaped sipes

The tyre employs uniquely developed 3-D shaped sipes. The sipes, which are shaped into a three-tier pyramid, suppress breakdown of the tread block. This contributes to exceptional stiffness on dry surfaces and outstanding edge effects on wet surfaces.

#### Arrangement



#### Edge effects

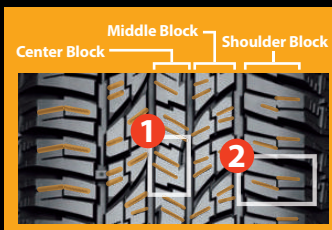
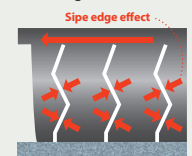


Suppressing uneven wear  
Opened: Closed:

#### Shape

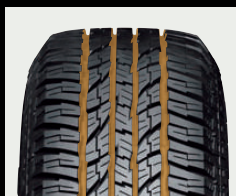
#### New 3-D shaped sipes

Improved wear resistance by ensuring edge effect provided high-level driving performance and block rigidity.



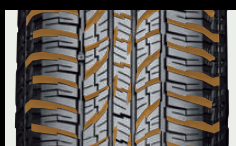
### 4 deep main grooves

The four wide, straight grooves enhance drainage performance and provide exceptional maneuverability and anti-aquaplaning capabilities on wet surfaces.



### Optimized lug groove

For the design, the lug grooves get narrower as they approach the center section and gradually wider as they approach the grounded edge of the shoulder. This helps to beat down off-road surfaces for greater traction.



## Aggressive shoulder.

The design of the shoulder section has been overhauled as well. In addition to improving the tyre's follow-up durability, the appearance gives an aggressive feel.

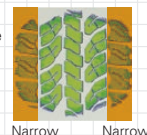


## Conventional product

We enhanced the road-hugging properties of the shoulder and lug grooves. This ensures exceptional traction in off-road conditions. Optimizing the shape of the entire grounded portion of the tread also improves wear resistance.

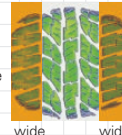
### GEOLANDAR A/T-S

The grounded part of the tread center is long and the shoulder part is comparatively short.



### GEOLANDAR A/T G015

The grounded part of the tread center has been shortened and the road-hugging property of the lug groove section of the shoulder has been improved.

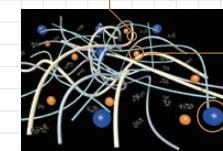


## Tread compound technology.

Compound exclusively for the GEOLANDAR A/T G015 that is highly wear resistant and resistant to temperature changes.

### TRIPLE Polymer

The compound is a blend of three types of polymer with differing functions. All of the functions required of the compound have been improved, namely wear resistance, flexibility in low temperatures and resistance to cuts and chipping.



### Orange Oil

Blending in Orange Oil realizes a flexible compound at the micro level. This improves tracking performance over minute undulations in the road surface as well as enhancing grip strength on both wet and dry roads.

### Silica

For silica, which enhances performance in the wet, it is critical that particles inside the compound are dispersed evenly. YOKOHAMA promotes the uniform dispersion of silica through its unique compounding technology.

### GEOLANDAR SUV

Pattern No. G015

Inch	Series	Dimensions	Pattern	RF/XL	Side	Overall Diameter (mm)	Approved Rim Width (inch)
20	45	305/45R20 112H	△		RBL	782	9.5-11.5
	50	305/50R20 120S	△	RF	RBL	814	8.5-11
	55	275/55R20 117H		XL	RBL	810	7.5-9.5
		LT285/55R20 122/119S			RBL	822	8-10
		LT305/55R20 121/118S			RBL	844	8.5-11
	60	LT265/60R20 121/118S			RBL	826	7.5-9.5
		275/60R20 115H			RBL	838	7.5-9.5
		LT295/60R20 126/123S			RBL	862	8-10
		LT325/60R20 121/118S			RBL	898	9-12
	65	LT275/65R20 126/123R			RBL	866	7.5-9.5
35X12.50R20 121R				RBL	877	8.5-11	
37X12.50R20 120R		△	XL	RBL	928	8.5-11.5	
18	55	225/55R18 98H			RBL	705	6-8
	60	235/60R18 107H		XL	RBL	739	6.5-8.5
		245/60R18 105H	△		RBL	751	7-8.5
		265/60R18 110H			RBL	775	7.5-9.5
		275/60R18 113H			RBL	787	7.5-9.5
	285/60R18 116H			RBL	799	8-10	
	65	265/65R18 114H			RBL	801	7.5-9.5
		275/65R18 116H			RBL	815	7.5-9.5
		LT275/65R18 123/120S			OWL	815	7.5-9
		LT285/65R18 125/122S			RBL	827	8-10
70	255/70R18 113H			RBL	815	6.5-8.5	
	265/70R18 116H			RBL	829	7-9	
	LT265/70R18 124/121R			OWL	829	7-9	
	LT275/70R18 125/122S			OWL	843	7-8.5	
	LT295/70R18 129/126S			RBL	871	7.5-10	
	75	LT285/75R18 129/126S			RBL	885	7.5-9.5
35X12.50R18 123R				RBL	877	8.5-11	
37X12.50R18 123R		△		RBL	928	8.5-11.5	
17		60	215/60R17 96H			RBL	690
	225/60R17 99H	△		RBL	702	6-8	
	235/60R17 102H	△		RBL	714	6.5-8.5	
	P275/60R17 110S	△		OWL	765	7.5-9.5	
	65	225/65R17 102H			RBL	724	6-8
		235/65R17 108H		XL	RBL	738	6.5-8.5
		P245/65R17 105T			OWL	750	7-8.5
		245/65R17 111H		XL	RBL	750	7-8.5
		255/65R17 114H		XL	RBL	764	7-9
		P265/65R17 110T			OWL	776	7.5-9.5
265/65R17 112H				RBL	776	7.5-9.5	
275/65R17 115H				RBL	790	7.5-9.5	
285/65R17 116H			RBL	802	8-10		
70	225/70R17 108T		XL	RBL	748	6-7.5	
	235/70R17 109H		XL	RBL	762	6-8	
	P245/70R17 108T			OWL	776	6.5-8	
	LT245/70R17 119/116R			OWL	776	6.5-8	
	P255/70R17 110T			OWL	790	6.5-8.5	
	P265/70R17 113T			OWL	804	7-9	
	LT265/70R17 121/118S			OWL	804	7-8.5	
	P285/70R17 117T			OWL	832	7.5-9.5	
	LT285/70R17 121/118S			OWL	840	7.5-9	
	LT315/70R17 121/118S			OWL	874	8.5-10	
75	P235/75R17 108T			OWL	784	6-8	
	LT245/75R17 121/118S			OWL	807	6-7.5	

Inch	Series	Dimensions	Pattern	RF/XL	Side	Overall Diameter (mm)	Approved Rim Width (inch)
17	75	P255/75R17 113T			OWL	814	6.5-8.5
		LT285/75R17 121S			OWL	860	7.5-9.5
	80	LT235/80R17 120/117R			OWL	812	6-7.5
		37X12.50R17 124R	△		RBL	928	8.5-11.5
16	60	215/60R16 95H			RBL	664	6-7.5
		235/60R16 100H			RBL	688	6.5-8.5
		205/65R16 95H	△		RBL	672	5.5-7.5
	65	215/65R16 98H			RBL	686	6-7.5
		255/65R16 109H			RBL	738	7-9
		215/70R16 100H			RBL	708	5.5-7
	70	225/70R16 103H			RBL	722	6-7.5
		P235/70R16 104T			OWL	736	6-8
		235/70R16 106H			RBL	736	6-8
		P245/70R16 106T			OWL	750	6.5-8
75	245/70R16 111H			XL	RBL	750	6.5-8
		P255/70R16 109T			OWL	764	6.5-8.5
		255/70R16 111H			RBL	764	6.5-8.5
		P265/70R16 111T			OWL	778	7-9
		265/70R16 112H			RBL	778	7-9
	275/70R16 114H				RBL	792	7-9
		LT225/75R16 115/112R			OWL	744	6-7
		P245/75R16 109T			OWL	774	6.5-8
		LT245/75R16 120/116S			OWL	774	6.5-8
		P265/75R16 114T			OWL	804	7-9
80	LT265/75R16 119/116R		△		OWL	804	7-8
		LT265/75R16 123/120R			OWL	804	7-8
		LT285/75R16 116/113S	△		RBL	834	7.5-9
		LT285/75R16 126/123R			OWL	834	7.5-9
		LT315/75R16 113S	△		RBL	878	8-11
	LT315/75R16 127/124R				OWL	878	8-11
		175/80R16 91S			RBL	686	4.5-6
		205/80R16 104T		XL	RBL	734	5-7
		215/80R16 103H			RBL	750	5.5-7
		LT215/85R16 115/112R			OWL	772	5.5-7
15	70	LT235/85R16 120/116R			OWL	806	6-7.5
		205/70R15 96H			RBL	669	5-7
		215/70R15 98H			OWL	683	5.5-7
	P225/70R15 100T				OWL	697	6-7.5
		P235/70R15 102T			OWL	725	6-8
		255/70R15C 112/110S			RBL	739	6.5-8.5
	265/70R15 112H				RBL	753	7-9
		LT215/75R15 100/97S			OWL	703	5.5-7
		LT235/75R15 104/101S			OWL	733	6-7
		P235/75R15 108T		XL	OWL	733	6-8
80	235/75R15 109H			XL	RBL	733	6-8
		175/80R15 90S			RBL	661	4.5-6
		195/80R15 96H			RBL	693	5-6.5
	215/80R15 102S				OWL	725	5.5-7
		225/80R15 105S			RBL	741	6-7.5
		30X9.50R15 104S			OWL	750	6.5-8.5
	31X10.50R15 109S				OWL	775	7-9
		32X11.50R15 113S			OWL	801	8-10
		33X12.50R15 108S			OWL	826	8.5-11
		27X8.50R14 95S	△		OWL	674	6-7

XL = Extra Load  
△ = G012 Available size  
RBL = Raised Black Letter  
OWL = Outlined White Letter





# GEOLANDAR M/T+

Redefining Rugged



SPEED RANGE

S/Q

20 18 17 16 15  
inch inch inch inch inch

OFF Road



Directional



Mud



Dirt



SUV

Pattern No. G001C

Off Road SUV

## Exceptional off-road driving performance for rough roads

Mud and dirt dispersion is not an issue, thanks to the extra grooves added to blocks near the shoulder of the M/T+. Strengthening grip and stability, the twin cut groove design also enhances traction for even better overall control.



Twin cut grooves

Image

## Handles impact from the side and enables driving under extreme conditions

New dual protection bars have been added to enhance cut and puncture resistance. The GEOLANDAR M/T+ is thus particularly well-equipped to deflect lateral impacts when conditions are extreme\*. Designed for high performance and maximum visual impact, the shoulder wall of the GEOLANDAR M/T+ is buttressed with massive side protectors, which enhance durability to cuts and chipping and help to disperse accumulations of mud and dirt.



Dual protection bars


Progressive powerful shoulder

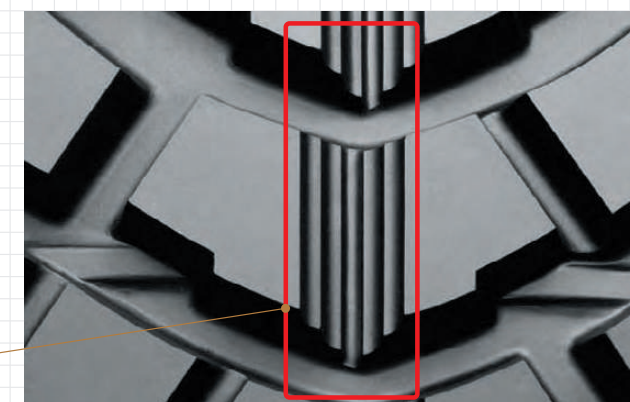


## Exceptional stability in on-road conditions and when driving at high speeds

Stepped central groove enhances surface grip. Treads improve self-cleaning ability and traction.

### Important Note

Since GEOLANDER M/T+ adopts a directional tread pattern, care should be taken when mounting the tyre to set the rotation mark (  ) on the sidewall according to the direction of tyre rotation and make sure that all marks on the mounted tyres face the same direction.



Circumferential center groove

GEOLANDAR  
M/T+

Pattern No. G001C

Inch	Series	Dimensions	Side	Overall Diameter (mm)	Approved Rim Width (inch)
20		35X12.50R20 121Q	RBL	877	8.5-11
		37X12.50R20 120Q	RBL	928	8.5-11
		38X15.50R20 125Q	RBL	953	11-14
		40X15.50R20 130Q	RBL	1004	11-14
18		38X13.50R18 126Q	RBL	953	8.5-11.5
		40X13.50R18 122Q	RBL	1004	8.5-11.5
17	70	LT265/70R17 112/109Q	RBL	804	7-8.5
		LT285/70R17 121/118Q	RBL	840	7.5-9
		35X12.50R17 119Q	RBL	877	8.5-11
		37X12.50R17 124Q	RBL	928	8.5-11
		38X13.50R17 119Q	RBL	953	8.5-11
		40X13.50R17 121Q	RBL	1004	8.5-11

Inch	Series	Dimensions	Side	Overall Diameter (mm)	Approved Rim Width (inch)
16	70	LT305/70R16 118/115Q	RBL	834	8-9.5
		LT225/75R16 103/100S	RBL	750	6-7
		LT225/75R16 115/112Q	RBL	744	6-7
		LT265/75R16 112/109Q	RBL	804	7-8
		LT285/75R16 116/113Q	RBL	834	7.5-9
15	85	LT315/75R16 113Q	RBL	878	8-10
		LT235/85R16 108/104Q	RBL	806	6-7.5
		30X9.50R15 104Q	RBL	750	6.5-8.5
		31X10.50R15 109Q	RBL	775	7-9
		33X12.50R15 108Q	RBL	826	8.5-11
		35X12.50R15 113Q	RBL	877	8.5-11

RBL = Raised Black Letter



# PARADA Spec-X

Modernized Design Meets  
Responsive Control



SPEED RANGE

W/V/H

24 23 22 20 19 18 17  
inch inch inch inch inch inch inch

ON Road



Comfort



Directional



ON Road



Mileage



SUV

Pattern No. PA02

On Road SUV

## Aggressive directional pattern

The dynamic design of the directional pattern achieves excellent traction and braking capabilities together with high wet performance.



Image

## A smooth, quiet ride and better wet and dry performance

Two wave-shaped center ribs realize exceptional steering stability, enabling a smooth, relaxing drive.

Perpetual contact patch



Image

## Better cornering capability and more even tread wear

Copes well with high loads when cornering. Finely grooved calves alleviate impact noise that arises when the tyre hits the road surface and reduce pattern noise, as well as help reduce uneven wear.

Reinforced shoulder blocks



Image

## Outstanding water evacuation

Deep, wide grooves in the center improve water drainage, enabling exceptional performance in wet conditions and anti-aquaplaning capabilities.

Circumferential center groove



Image

## Protects wheels against damage

Rim protector sidewall



Image

**PARADA**  
Spec-X

Pattern No. PA02

Inch	Series	Dimensions	RF/XL	Overall Diameter (mm)	Approved Rim Width (inch)
24	25	285/25R24 97V	RF	752	10.5
	30	255/30R24 97V	RF	764	8.5-9.5
	35	295/35R24 110V	RF	816	10-11.5
		305/35R24 112V	RF	824	10-12
		315/35R24 114V	RF	830	10.5-12.5
	40	285/40R24 112V	RF	838	9.5-11
23	45	325/45R24 116V	RF	899	10-12
	35	285/35R23 107V	RF	784	9.5-11
	40	285/40R23 111V		812	9.5-11
22	30	245/30R22 92W	RF	707	8-9
		255/30R22 95V	RF	720	8.5-9.5
		265/30R22 97V	RF	719	9-10
		285/30R22 101V	RF	731	9.5-10.5
	35	255/35R22 99V	RF	737	8.5-10
		265/35R22 102V	RF	745	9-10.5
		285/35R22 106V	RF	759	9.5-11
	40	265/40R22 106V	RF	771	9-10.5
		285/40R22 110V	RF	787	9.5-11
		305/40R22 114V	RF	803	10-12
	45	285/45R22 114V	RF	815	9-10.5
		305/45R22 118V	RF	833	9.5-11.5
50	325/50R22 116V	RF	881	9-11.5	

Inch	Series	Dimensions	RF/XL	Overall Diameter (mm)	Approved Rim Width (inch)
20	35	235/35R20 92W	XL	672	8-9.5
	40	255/40R20 101V	RF	712	8.5-10
		275/40R20 106V	RF	728	9-11
	45	245/45R20 99V		728	7.5-9
		255/45R20 105V	RF	738	8-9.5
		275/45R20 110V	RF	756	8.5-10.5
	50	295/45R20 114V	RF	774	9.5-11
		245/50R20 102V		754	7-8.5
		255/50R20 109V	RF	764	7-9
		265/50R20 111V	RF	774	7.5-9.5
		285/50R20 112V		794	8-10
		305/50R20 120V	RF	814	8.5-11
	55	235/55R20 102V		766	6.5-8.5
		275/55R20 117V	RF	810	7.5-9.5
19	55	235/55R19 101V		741	6.5-8.5
18	55	235/55R18 100V		715	6.5-8.5
	60	225/60R18 100H		727	6-8
		235/60R18 103V		739	6.5-8.5
		245/60R18 105H		751	7-8.5
	65	235/65R18 106H		763	6.5-8.5
17	65	225/65R17 102H		724	6-8

RF = Reinforced XL = Extra Load



# Light Commercial Vehicle

## RY818

—DELIVERY STAR—

The POWER of SILENCE



SPEED RANGE

T/R/P/N

17 16 15 14 13 12  
inch inch inch inch inch inch



Mileage



Light Commercial Vehicle

Pattern No. RY818

## Optimizes mileage and minimizes uneven wear

- Flat contour with uniform contact pressure
- Increased contact area delivers superior handling
- High-mileage performance
- Long life compound

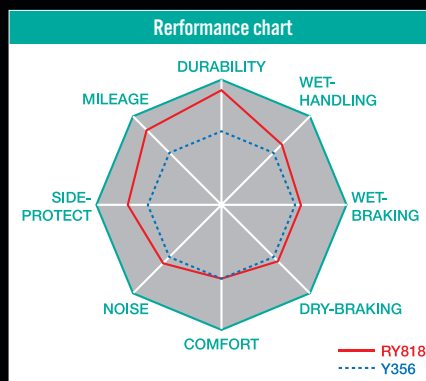
## Wet performance

- Tread pattern for superb drainage performance
- Excellent aquaplaning performance provided by three wide grooves, even after long mileage
- High-grip compound for wet conditions

## Toughness

- Kerbing rib\* provides protection against sidewall damage, counteracting critical damage in this area

\*No kerbing rib for sizes below 14 inch tyres



Image

RY818

DELIVERY STAR

Pattern No. RY818

Inch	Series	Dimensions	Overall Diameter (mm)	Approved Rim Width (inch)	Inch	Series	Dimensions	Overall Diameter (mm)	Approved Rim Width (inch)
17	60	235/60R17C 117/115R	714	6.5-7.5	15	65	205/65R15C 102/100T	647	5.5-6.5
16	60	215/60R16C 103/101T	664	6-7.5	70		195/70R15C 104/102R	655	5-6
	65	195/65R16C 104/102R	660	5.5-6			205/70R15C 106/104R	669	5.5-6.5
		205/65R16C 107/105T	672	5.5-6.5			215/70R15C 109/107R	683	5.5-7
		215/65R16C 106/104T	686	6-7			225/70R15C 112/110R	697	6-7
		225/65R16C 112/110R	698	6-7		82	195R15C 106/104R	690	5-6
		235/65R16C 115/113R	712	6.5-7.5	14	65	175/65R14C 90/88T	584	5-5.5
235/65R16C 121/119R	712	6.5-7.5	82	175R14C 99/98R		634	4.5-5.5		
75	185/75R16C 104/102R	684		5-6			185R14C 102/100R	650	5-6
	195/75R16C 107/105R	698		5-6		195R14C 106/104R	666	5-6	
	205/75R16C 110/108R	714	5.5-6.5	13	82	155R13 90/89P	582	4-5	
	215/75R16C 113/111R	728	5.5-7			165R13C 94/92P	596	4-5	
	215/75R16C 116/114R	728	5.5-7			175R13C 97/95P	608	4.5-5.5	
	225/75R16C 121/120R	744	6-7	12	82	155R12C 88/86N	550	4-5	

# Other Tyres

## S.drive

SPEED RANGE

T/V/W/Y

20 19 18 17 16 15 14  
inch inch inch inch inch inch inch



S.drive

Pattern No. AS01

Inch	Series	Dimensions	OE Mark	RF/XL	Overall Diameter (mm)	Approved Rim Width (inch)
20	30	275/30R20 97Y		RF	674	9-10
		285/30R20 99Y		RF	680	9.5-10.5
	35	245/35R20 95Y		RF	680	8-9.5
		275/35R20 102Y		RF	700	9-11
	40	245/40R20 99Y		RF	704	8-9.5
	19	30	275/30R19 96Y		RF	649
215/35R19 85Y				RF	633	7-8.5
35		245/35R19 93Y		RF	655	8-9.5
		275/35R19 96Y			675	9-11
40		245/40R19 94Y			679	8-9.5
45		225/45R19 96W		RF	685	7-8.5
		245/45R19 98Y			703	7.5-9
18	35	245/35R18 92Y		RF	629	8-9.5
		265/35R18 97Y		RF	643	9-10.5
	45	245/45R18 100Y		RF	677	7.5-9
		255/45R18 99Y			683	8-9.5

RF = Reinforced

MO,0 = Original Equipment for Smart

Inch	Series	Dimensions	OE Mark	RF/XL	Overall Diameter (mm)	Approved Rim Width (inch)
17	35	215/35R17 83W		RF	582	7-8.5
		225/35R17 86Y	0	RF	590	7.5-9
	40	195/40R17 81W		RF	588	6.5-7.5
		205/40R17 84W		RF	595	7-8
		235/40R17 90Y			620	8-9.5
		245/40R17 91Y			628	8-9.5
16	45	195/45R17 85W		RF	607	6-7.5
	35	215/35R16 81W		RF	556	7-8.5
		40	195/40R16 80W		RF	562
		215/40R16 82T	MO		578	7-8.5
		215/40R16 86W		RF	578	7-8.5
	50	175/50R16 77T	MO		582	5-6
15	55	215/55R16 93W			639	6-7.5
		225/55R16 95W			654	6-8
	45	195/45R15 78W			557	6-7.5
14	50	205/50R15 86V			587	5.5-7.5
	55	185/55R15 82V			585	5-6.5
	55	185/55R14 80V			558	5-6.5

RF = Reinforced  
MO,0 = Original Equipment for Smart

## C.drive

These sizes are sold in Afghanistan and Pakistan.

SPEED RANGE

H/V/W

17 16 15 14  
inch inch inch inch



C.drive

Pattern No. AC01

Inch	Series	Dimensions	RF/XL	Overall Diameter (mm)	Approved Rim Width (inch)	
17	45	215/45R17 91W	RF	626	7-8	
		225/45R17 94W	RF	634	7-8.5	
		235/45R17 97W	RF	640	7.5-9	
	50	215/50R17 95W	RF	645	6-7.5	
	55	215/55R17 98W	RF	667	6-7.5	
16	45	205/45R16 87W	RF	590	6.5-7.5	
		50	195/50R16 88V	RF	603	5.5-7
		205/50R16 87W		612	5.5-7.5	
	225/50R16 92W		632	6-8		
	55	195/55R16 87V		619	5.5-7	
	205/55R16 91W		630	5.5-7.5		
		215/55R16 97W	RF	639	6-7.5	
		225/55R16 99W	RF	654	6-8	
	60	205/60R16 92V		651	5.5-7.5	
		215/60R16 99V	RF	664	6-7.5	
225/60R16 98W			675	6-8		

Inch	Series	Dimensions	RF/XL	Overall Diameter (mm)	Approved Rim Width (inch)
15	55	185/55R15 82V		585	5-6.5
		195/55R15 89V	RF	595	5.5-7
		60	185/60R15 88H	RF	603
	195/60R15 88V		615	5.5-7	
	205/60R15 91V		627	5.5-7.5	
	215/60R15 98V	RF	639	6-7.5	
		225/60R15 96V		651	6-8
		65	185/65R15 88H		621
	195/65R15 91V		635	5.5-7	
	205/65R15 94V		647	5.5-7.5	
14	60	215/65R15 100H	RF	659	6-7.5
		185/60R14 82H		578	5-6.5
		195/60R14 86H		590	5.5-7
	65	185/65R14 86H		596	5-6.5

RF = Reinforced

RF = Reinforced



Original Equipment



Audi							
Model Name	Dimensions	XL	Brand Name	Pattern	OE Mark	M+S	Remarks
A6 (C7)	255/35R20 97Y	XL	ADVAN Sport	V103S	AO		
A7 (C7)	265/35R20 99Y	XL	ADVAN Sport	V103S	AO		
	255/40R19 100Y	XL	ADVAN Sport	V103S	AO		
	255/40R19 100Y	XL	ADVAN Sport	V103S	AOE		Runflat
S6 (C7)	255/35R20 97Y	XL	ADVAN Sport	V103S	AO		
	255/40R19 100Y	XL	ADVAN Sport	V103S	AOE		Runflat
S7 (C7)	265/35R20 99Y	XL	ADVAN Sport	V103S	AO		
	255/40R19 100Y	XL	ADVAN Sport	V103S	AOE		Runflat
S8 (D3)	265/35ZR20 99Y	XL	ADVAN Sport	V103S	AO		
RS 6 (C7)	275/35ZR20 102Y	XL	ADVAN Sport V105	V105D	RO1		
RS 7 (C7)	275/35ZR20 102Y	XL	ADVAN Sport V105	V105D	RO1		
TT RS (TT3)	255/30ZR20 (92Y)	XL	ADVAN Sport V105	V105	RO1		
TTS (TT3)	255/30ZR20 (92Y)	XL	ADVAN Sport V105	V105	RO1		
Q7	275/45R20 110Y	XL	ADVAN Sport	V103B	AO		
	265/50R19 110Y	XL	ADVAN Sport	V103B	AO		

AO = Audi Original Designation  
AOE = Audi Original Extended (Runflat)  
RO1 = Audi Quattro Specification

Chrysler							
Model Name	Dimensions	XL	Brand Name	Pattern	OE Mark	M+S	Remarks
GRAND VOYAGER	225/65R17 102H		ASPEC A349	A349A			
	225/65R16 100H		ASPEC A349	A349A			
JEEP CHEROKEE	245/65R17 107H		GEOLANDAR SUV	G055		M+S	

CITROËN							
Model Name	Dimensions	XL	Brand Name	Pattern	OE Mark	M+S	Remarks
C4 AIRCROSS	215/70R16 99H		GEOLANDAR G033	G033		M+S	

DODGE							
Model Name	Dimensions	XL	Brand Name	Pattern	OE Mark	M+S	Remarks
DART	225/40R18 92V	RF	AVID S34	S34NV		M+S	
	225/45R17 91H		AVID S34	S34PV		M+S	
JOURNEY	225/65R17 102H		ASPEC A349	A349A			
	225/65R16 100H		ASPEC A349	A349A			

FIAT							
Model Name	Dimensions	XL	Brand Name	Pattern	OE Mark	M+S	Remarks
124 SPIDER	195/50R16 84V		ADVAN Sport V105	V105			LHD
	195/50R16 84V		ADVAN Sport V105	V105			RHD

HONDA							
Model Name	Dimensions	XL	Brand Name	Pattern	OE Mark	M+S	Remarks
CITY	175/65R15 84T		BluEarth E50	E50JA			
INSIGHT	175/65R15 84T		YOKOHAMA S71	S71B			
JAZZ	175/65R15 84T		YOKOHAMA S71	S71A			
CIVIC	215/50R17 91V		ADVAN dB	V551V			
JADE	205/60R16 92H		ADVAN dB	V551T			
STEPWGN	205/60R16 92H		ADVAN dB	V551V			
ODYSSEY	215/55R17 94V		BluEarth A34	A34AZ			
	215/60R16 95H		BluEarth A34	A34PZ			
CR-Z	195/55R16 87V		ADVAN A10	A10E			LHD
	195/55R16 87V		ADVAN A10	A10E			RHD
HR-V	215/55R17 94V		BluEarth E70	E70BZ			

INFINITI							
Model Name	Dimensions	XL	Brand Name	Pattern	OE Mark	M+S	Remarks
Q30	235/50R18 97V		C.drive 2	AC02A			
QX30	235/50R18 97V		C.drive 2	AC02A			

ISUZU							
Model Name	Dimensions	XL	Brand Name	Pattern	OE Mark	M+S	Remarks
D-MAX	205R16C 8PR LT 110/108S		GEOLANDAR G97	G97A		M+S	LHD

LEXUS							
Model Name	Dimensions	XL	Brand Name	Pattern	OE Mark	M+S	Remarks
CT200h	215/45R17 87W		YOKOHAMA dB E70	E70J			LHD
	215/45R17 87W		YOKOHAMA dB E70	E70J			RHD
	205/55R16 91V		ADVAN A460	A460J			LHD
	205/55R16 91V		ADVAN A460	A460J			RHD
	205/55R16 91V		YOKOHAMA dB E70	E70J			LHD
	205/55R16 91V		YOKOHAMA dB E70	E70J			RHD
	225/50R17 94W		ADVAN dB	V551A			LHD
GS	225/50R17 94W		ADVAN dB	V551A			RHD
	225/45R17 91W		BluEarth E51	E51B			LHD
IS	225/45R17 91W		BluEarth E51	E51A			RHD

LEXUS							
Model Name	Dimensions	XL	Brand Name	Pattern	OE Mark	M+S	Remarks
ES	215/55R17 93V		YOKOHAMA dB E70	E70B			
	215/60R16 95V		YOKOHAMA dB E70	E70B			
NX	225/60R18 100H		BluEarth E51	E51B			LHD
	225/60R18 100H		BluEarth E51	E51A			RHD
	225/60R18 100H		GEOLANDAR G91	G91HV		M+S	
	225/65R17 102H		GEOLANDAR G91	G91AV		M+S	LHD
	225/65R17 102H		GEOLANDAR G91	G91AV		M+S	RHD
	225/65R17 102H		GEOLANDAR G91	G91AV		M+S	RHD
LX 570	285/60R18 116V		GEOLANDAR A/T G94	G94BV		M+S	LHD
	285/60R18 116V		GEOLANDAR A/T G94	G94AV		M+S	RHD

Lotus							
Model Name	Dimensions	XL	Brand Name	Pattern	OE Mark	M+S	Remarks
ELISE	175/55R16 80W		ADVAN Neova	AD07	LTS2		Front
	225/45R17 91W		ADVAN Neova	AD07	LTS2		Rear
ELISE S CUP	195/50R16 84W		ADVAN A048	A048	LTS		Front
	225/45R17 90W		ADVAN A048	A048	LTS		Rear

LTS2, LTS= Lotus Original Equipment Designation

MAZDA							
Model Name	Dimensions	XL	Brand Name	Pattern	OE Mark	M+S	Remarks
CX-5	225/65R17 102V		GEOLANDAR G98	G98A			LHD
	225/65R17 102V		GEOLANDAR G98	G98A			RHD
CX-5 (2017-)	225/65R17 102V		GEOLANDAR G98	G98FV			LHD
	225/65R17 102V		GEOLANDAR G98	G98GV			RHD
CX-9	P255/60R18 107H		GEOLANDAR H/T	G056B		M+S	LHD
	255/60R18108H		GEOLANDAR H/T	G056A		M+S	RHD
MAZDA 2	185/65R15 88S		BluEarth-A	AE50			
ROADSTER /	195/50R16 84V		ADVAN Sport V105	V105			LHD
MX-5 (ND)	195/50R16 84V		ADVAN Sport V105	V105			RHD

Mercedes-Benz							
Model Name	Dimensions	XL	Brand Name	Pattern	OE Mark	M+S	Remarks
A-CLASS (W176)	225/45R17 91V		C.drive 2	AC02A		MO	
	225/45R17 91W		ADVAN Sport V105	V105		MO	
	205/55R16 91H		C.drive 2	AC02A		MO	
	205/55R16 91V		C.drive 2	AC02A		MO	
B-CLASS (W246)	225/45R17 91V		C.drive 2	AC02A		MO	
	225/45R17 91W		ADVAN Sport V105	V105		MO	
	205/55R16 91H		C.drive 2	AC02A		MO	
	205/55R16 91V		C.drive 2	AC02A		MO	
C-CLASS (BR204)	245/40R17 91W		ADVAN Sport	V103S		MO	Rear
	245/40R17 91W		ADVAN Sport V105	V105		MO	Rear
	225/45R17 91W		ADVAN Sport	V103S		MO	
	205/55R16 91V		ADVAN Sport	V103S		MO	
C-CLASS (BR205)	225/45R17 91W		ADVAN Sport V105	V105		MO	
	225/45R17 91W		ADVAN Sport V105	V105		MO	
	205/55R16 91V		ADVAN Sport V105	V105		MO	
	205/55R16 91V		ADVAN Sport V105	V105		MO	
C-CLASS (BR204)	245/40R18 97Y	XL	ADVAN Sport V105	V105		MO	
	225/45R18 95Y	XL	ADVAN Sport V105	V105		MO	
	225/50R17 94W		ADVAN Sport V105	V105		MO	
	225/50R17 94W		ADVAN Sport V105	V105		MO	
CLS-CLASS (C218)	255/40R18 99Y	XL	ADVAN Sport V105	V105		MO	
	255/40R18 99Y	XL	ADVAN Sport V105	V105		MO	
	285/35R18 97Y		ADVAN Sport V105	V105		MO	Rear
	255/40R18 99Y	XL	ADVAN Sport V105	V105		MO	Front
CLS-Shooting Brake (X218)	285/35R18 97Y		ADVAN Sport V105	V105		MO	Rear
	C 63 AMG (BR204)		235/35ZR19	XL	ADVAN Sport	V103S	MO
			255/30ZR19	XL	ADVAN Sport	V103S	MO
			255/30ZR19	XL	ADVAN Sport	V103S	MO
E 43 AMG (BR213)	245/35ZR20 (95Y)	XL	ADVAN Sport V105	V105		MO	Front
	275/30ZR20 (97Y)	XL	ADVAN Sport V105	V105		MO	Rear
	245/40ZR19 (98Y)	XL	ADVAN Sport V105	V105		MO	Front
	275/35ZR19 (100Y)	XL	ADVAN Sport V105	V105		MO	Rear
ML 63 AMG (W164)	295/40ZR20 106Y		ADVAN Sport	V103A		MO	
	G 63 AMG / G65		285/55R18 113V	AVS S/T type-1		V801	
	AMG (W463)		275/50R20 113W	RF	ADVAN S.T.	V802	MO
	G-CLASS (BR463)		265/60R18 110V		GEOLANDAR H/T	G038G	M+S
GLA-CLASS (X253)	LT225/75R16 110/107R				GEOLANDAR A/T-S	G012	M+S
	235/50R18 97V		C.drive 2	AC02A		MO	
	(X156)		235/50R18 97V		C.drive 2	AC02A	MOE
	GLC-CLASS		235/55R19 101V		ADVAN Sport V105	V105	MO
S-CLASS (BR222)	(X253)		235/60R18 103V		ADVAN Sport V105	V105	MO
			245/50R18 100W		ADVAN Sport V105	V105C	MO
			245/50R18 100W		ADVAN Sport V105	V105C	MO
	SL-CLASS (R231)		255/35ZR19 (96Y)	XL	ADVAN Sport V105	V105S	MO
			285/30ZR19 (98Y)	XL	ADVAN Sport V105	V105S	MO
			255/40R18 95Y		ADVAN Sport V105	V105	MO
			285/35R18 97Y		ADVAN Sport V105	V105	MO

Mercedes-Benz							
Model Name	Dimensions	XL	Brand Name	Pattern	OE Mark	M+S	Remarks
SLK-CLASS (R172)	225/50R16 92W		ADVAN Sport V105	V105		MO	
	225/50R16 92V		ADVAN Sport V105	V105		MO	
	205/55R16 91W		ADVAN Sport V105	V105		MO	
	205/55R16 91V		ADVAN Sport V105	V105		MO	
	245/40R17 91W		ADVAN Sport	V105		MO	Rear

MO = Mercedes Original  
MOE = Mercedes Original Extended (Run flat)

MITSUBISHI							
Model Name	Dimensions	XL	Brand Name	Pattern	OE Mark	M+S	Remarks
MIRAGE	175/55R15 77V		BlueEarth A34	A34LZ			
	165/65R14 79S		BlueEarth A34	A34LZ			
LANCER	215/45R18 89W		ADVAN A10	A10A			LHD
	215/45R18 89W		ADVAN A10	A10A			RHD
PAJERO	235/80R16 109S		GEOLANDAR G039	G039		M+S	
PAJERO SPORT	265/65R17 112H		GEOLANDAR G902	G902		M+S	
	265/70R16 112S		GEOLANDAR G039	G039		M+S	
	265/70R16 112S		GEOLANDAR G94	G94CV		M+S	
OUTLANDER	215/70R16 99H		GEOLANDAR G033	G033		M+S	
OUTLANDER (2015-)	215/70R16 100H		GEOLANDAR G033	G033V		M+S	
RVR	215/60R17 96H		ASPEC A349	A349A			
(OUTLANDER SPORT)	215/65R16 98H		ASPEC A349	A349A			
DELICA D:5	215/70R16 99H		GEOLANDAR G033	G033		M+S	



List of Available Patterns & Sizes

Inch	Series	Size	Load Index		ADVAN Sport	ADVAN dB	ADVAN FLEVA	ADVAN NEDUA	ADVAN A052	BlueEarth A	BlueEarth Es	BlueEarth HX
			Standard	RF/XL	V105	V551	V701	AD08	A052	AE50	ES32	RV02
23	35	305/35R23		111	XL Y ♪							
	22	30	295/30R22		103	XL Y ♪						
	35	265/35R22		102	XL Y ♪							
21	35	295/35R21		108	XL Y ♪							
	21	35	295/35R21		107	XL Y N-2 ♪						
	40	265/40R21		105	XL Y ♪							
20	45	275/45R21		110	XL W ♪							
	25	285/252R20		93	XL (Y)							
	30	235/30R20		88						XL W		
		245/302R20		90	XL (Y)							
		255/30R20		92			XL W					
		255/302R20		92	X L(Y) / XL (Y) RO1 ‡							
		265/302R20		94	XL (Y)							
		275/30R20		97		XL W				XL W		
		275/302R20		97	XL (Y) / XL (Y) MO ‡							
		285/302R20		99	XL (Y)							
		295/302R20		101	XL (Y)							
		305/302R20		103	XL (Y)							
	35	225/35R20		90			XL W					
		225/352R20		90	XL (Y)							
		235/352R20		92	XL (Y)							
		245/35R20		95		XL W						
		245/352R20		95	(Y) / (Y) MO ‡					XL W		
		255/352R20		97	XL (Y)							
		265/352R20		99	XL (Y)							
		275/35R20	98			W						
		275/352R20		102	XL Y RO1 ◇							
		295/352R20		105	XL (Y) N-0 #							
	40	245/40R20		99		XL W					XL W	
		245/402R20		99	XL (Y)							
		255/402R20		101	XL (Y) N-0 ‡							
		265/402R20		104	XL Y							
		275/40R20		106	XL Y ♪							
		295/40R20		110	XL Y ♪							
	45	245/45R20		103	XL Y ♪							
		255/45R20		105	XL W ♪							
		265/45R20		108	XL Y ♪							
	50	255/50R20		109	XL Y ♪							
		265/50R20		111	XL W ♪							
19	30	255/30R19		91			XL W	RF W		XL W		
		255/302R19		91	XL (Y)							
		265/30R19	89	93		XL W	XL W	W		XL W		
		265/302R19		93	XL (Y)			W				
		275/30R19	92	96		XL W		W		XL W		
		275/302R19		96	XL (Y)							
		285/302R19		98	XL (Y) MO							
		295/30R19		100				RF W				
		295/302R19		100	XL (Y)							
		305/30R19		102			XL W					
		305/302R19		102	XL (Y)							
	35	215/35R19		85						XL W		
		225/35R19		88			XL W	RF W		XL W		
		225/352R19		88	XL Y							
		235/35R19	87	91		XL W	XL W	W		XL W		
		235/352R19		91	XL (Y)			W		XL W		
		245/35R19	89	93		XL W		W		XL W		
		245/352R19		93	XL (Y)							
		255/35R19	92	96			XL W	W		W		
		255/352R19		96	XL (Y) / XL (Y) MO			W				
		265/35R19	94					W				
		265/352R19		98	XL (Y)							
		275/35R19	96	100		W		W		XL W		
		275/352R19		100	XL (Y) / XL (Y) MO ‡							
		285/352R19		99	(Y)							
		295/352R19	100	104	XL (Y) / (Y) N0 *							
	40	225/40R19	89	93			XL W			W		XL W
		225/402R19		93	XL (Y)							
		235/402R19	92	96	(Y) N0 ‡ / XL (Y)							
		245/40R19	94	98		XL W		W		XL W		XL W
		245/402R19		98	XL (Y) / XL (Y) MO ‡							
		255/402R19		100	XL (Y)							
		265/402R19	98	102	(Y) N0 ‡ / XL (Y)							
		275/402R19		105	XL (Y)							
		285/402R19	103		(Y)							
	45	225/45R19		96						XL W		XL W
		235/45R19	95				W					
		245/45R19	98		Y		Y			W		W
		245/452R19		98	Y							
		255/452R19	100		(Y)							
	50	235/50R19	99		W							
		255/50R19		107	XL Y ♪							
	55	225/55R19	99									V
		235/55R19	101		V MO ‡ / Y ‡							
		255/55R19	107		Y ♪							
18	30	285/30R18	93					W				
		295/30R18	94	98				W				
		315/30R18		98					XL Y			
	35	215/35R18		84			XL W		Y			
		225/35R18		87			XL W					
		245/352R18		92	XL Y							
		255/35R18	90	94			XL W	W	XL Y	XL W		
		255/352R18		94	XL Y							
		265/35R18	93	97		W		W	XL Y	XL W		
		265/352R18		97	XL Y							
		275/352R18		99	XL (Y)							
		285/35R18	97		Y MO ‡							
		295/35R18		103					XL Y			
	40	205/40R18		86			XL W					
		215/40R18		89			XL W	W		XL W		
		215/402R18		89	XL Y							
		225/40R18	88	92	XL W 0 § / XL W 0 †		W	XL W	W	XL Y	XL W	XL W ♡
		225/402R18		92	XL Y							
		235/40R18	91	95		W		XL W	W	XL Y	XL W	XL W ♡
		235/402R18		95	XL (Y)							
		245/40R18	93	97	XL Y MO ‡	Y		XL W	W	XL Y	XL W	
		245/402R18		97	XL Y							
		255/40R18	95	99	XL Y MO ‡ / Y MO ‡			XL W	W	XL Y		
		265/40R18		101				RF W		XL Y		
		265/402R18		101	XL (Y)							
		275/40R18	99									
	45	215/45R18	89	93		W		W		W		XL W
		225/45R18	91	95	XL Y MO ‡		XL W	W		W		XL W
		225/452R18		95	XL Y							
		235/45R18	94			W				W		
		235/452R18		98	XL (Y)							
		245/45R18	96	100		W		W		W / XL W		
		245/452R18		100	XL Y							
		255/452R18		103	XL Y							
		265/452R18		(Y)								
		275/452R18		107	XL (Y)							

Inch	Series	Size	Load Index		ADVAN Sport	ADVAN dB	ADVAN FLEVA	ADVAN NEDUA	ADVAN A052	BlueEarth-A	BlueEarth-Es	BlueEarth-HX		
			Standard	RF/XL	V105	V551	V701	AD08	A052	AE50	ES32	RV02		
18	50	215/50R18	92							V				
		225/50R18	95							W		V		
		235/50R18	97				W	V		W		V		
		235/502R18		101	XL Y									
		245/50R18	100		W MO =	W								
	55	245/502R18		104	XL (Y)									
		215/55R18	95	99								V / XL V		
		225/55R18	98									V		
		235/55R18	100		Y		V					V		
		255/55R18		109	XL Y ♪									
60	225/60R18		100								V			
	235/60R18	103	107	V MO ± / XL W ±							XL W			
	235/65R18	106									V			
17	40	205/40R17	80	84						H 0	XL V			
		215/40R17	83	87			XL W	W		XL V				
		235/40R17	90					W						
		245/40R17	91		W MO ±	W		W	W	V ♡				
		255/40R17	94	98			W	W	XL W					
	45	255/402R17		98	XL (Y)									
		185/45R17	78							H 0				
		205/45R17	84	88		W	XL W	W	XL W	XL W	V			
		215/45R17	87	91		XL W	XL W	W	XL W	XL W	XL V	XL W		
		215/452R17	91	94	XL Y									
50	225/45R17	91	94	W MO ±	W / W 0 //	XL W	W	XL W	W / XL V / XL W	XL V ♡				
	225/452R17	94	94	XL Y										
	235/45R17	94	97		W	XL W	W	XL W	XL W	XL V ♡				
	235/452R17	97		XL Y										
	245/45R17	95	99		W		W		XL W					
	245/452R17	99		XL Y										
	205/50R17	89	93			XL W	W		XL V / XL W					
	205/502R17		93	XL Y										
	215/50R17	91	95		V / V 0 ▯	XL W			V / XL W	XL V	XL V			
	225/50R17	94	98	W MO ±	W / W 0 //	XL W			W / XL W	V ♡				
55	225/502R17		98	XL Y										
	235/50R17	96			V									
	235/502R17	96		Y										
	205/55R17	91				V			V		V			
	205/552R17	91		Y										
	215/55R17	94			W	W			V / W	V	V			
	225/55R17	97	101		W	W			W / XL W		W			
	225/552R17		101	XL Y										
	235/55R17	99	103	Y	V						XL W			
	215/60R17	96							H		H			
65	225/60R17	99									H			
	255/60R17		110	XL W ♪										
	225/65R17		106								XL V			
	235/65R17		108	XL W										
	16	45	195/45R16	80	84			XL W			W / XL V	V		
			205/45R16	83	87			XL W	W		XL W	V		
			215/45R16	86					W					
			225/45R16	89	93				W	XL W				
			185/50R16	81							H 0			
	50	195/50R16	84	88	V 0 ±		V			V / XL V	V			
205/50R16		87	91		V	V	V	XL W	V / W	V				
225/50R16		92	96	W MO ± / V MO ±		W	V	XL W						
185/55R16		83							V	V				
195/55R16		87				V			V / H	V				
55	205/55R16	91	94	W MO ± / V MO ±	W	W	V	XL W	V / W / XL V	V / H				
	215/55R16	93	97		W				V / XL H / XL W	H / XL V				
	225/55R16	95	99		W				V / XL W	V ♡				
	60	175/60R16	82							H	H			
		185/60R16	86							H				
195/60R16		89							H	H	H			
205/60R16		92	96	V / H 0 ▯ / H 0 ▯ / V 0 ▯					H / V / XL W	H / XL V / XL H	H			
215/60R16		95	99	V					H / XL V		H			
65	225/60R16	98			W				H	V ♡				
	235/60R16	100			W									
	205/65R16	95			H				H	H	H			
	215/65R16	98							H		H			
	15	50	195/50R15	82			V	V				V		
			205/50R15	86				V						
			175/55R15	77					V		V	H / V		
			185/55R15	82					V		V	V / H		
			195/55R15	85		V	V	V						
	60	205/55R15	87/88				88 V	87 V ▽						
155/60R15		74									H			
165/60R15		77									H			
175/60R15		81								H	H			
185/60R15		84	88							H	H / XL H			
195/60R15		88		H					H / V	H				
205/60R15		91		H			H ▽		V	H				
65		145/65R15	72								H	H		
		175/65R15	84								H	H		
		185/65R15	88			H				H / S 0	T / H			
	185/65R15	91	95		H				V / H	H / T / V / XL V	H			
	205/65R15	94	99		H				H		H	H		
14	50	215/65R15	96			H						H		
		185/50R14	77							V ∞				
		165/55R14	72									H		
		60	165/60R14	75					V ▽			T		
			175/60R14	79					H ▽					
	185/60R14		82					H ▽			H			
	65	195/60R14	86					H ▽			H			
		155/65R14	75								T			
		165/65R14	79								T			
		175/65R14	82							H	T / H			
185/65R14		86							H	T / H				
70	195/65R14	89									H			
	165/70R14	81	85								T / XL T			
	175/70R14	84									H / T			
	185/70R14	88									H / T			
13	50	195/70R14	91								H			
		175/50R13	72											
		60	155/60R13	70							V ∞			
			165/60R13	73						H ▽				
			175/60R13	77						H ▽				
	185/60R13		80							H ∞				
	70	175/70R13	82											
		165/60R12	71									T		



Inch	Series	Size	Load Index		GEOLANDAR	GEOLANDAR	GEOLANDAR	GEOLANDAR	PARADA		
			Standard	RF/XL	H/T <sup>max</sup>	SUV	A/T G015	M/T <sup>+</sup>	Spec-X		
24	25	285/25R24		97	G056	G055	G015	G001C	PA02		
	30	255/30R24		97					RF V		
	35	295/35R24		110					RF V		
		305/35R24		112					RF V		
		315/35R24		114					RF V		
	40	285/40R24		112					RF V		
	45	325/45R24		116					RF V		
23	35	285/35R23		107					RF V		
	40	285/40R23	111						V		
22	30	245/30R22		92					RF W		
		255/30R22		95					RF V		
		265/30R22		97					RF V		
		285/30R22		101					RF V		
	35	255/35R22		99					RF V		
		265/35R22		102					RF V		
		285/35R22		106					RF V		
	40	265/40R22		106					RF V		
		285/40R22		110					RF V		
	45	305/40R22		114					RF V		
		285/45R22		114					RF V		
	50	305/45R22		118					RF V		
		325/50R22		116					RF V		
	20	35	235/35R20		92					XL W	
		40	255/40R20		101					RF V	
45		275/40R20		106					RF V		
		245/45R20	99						V		
		255/45R20		105					RF V		
50		275/45R20		110					RF V		
		295/45R20		114					RF V		
		305/45R20	112				H ↙				
55		245/50R20	102			V			V		
		255/50R20		109					RF V		
		265/50R20		111		XL V			RF V		
		285/50R20	112		V				V		
60		305/50R20		120			RF S ↙		RF V		
		235/55R20	102			V			V		
		275/55R20		117			XL H		RF V		
		LT285/55R20	122/119				S				
65		LT305/55R20	121/118				S				
		P275/55R20	111			H					
		245/60R20	107			H					
		275/60R20	115								
	LT265/60R20	121/118				H					
	LT295/60R20	126/123				S					
	LT325/60R20	121/118				S					
	P275/60R20	114			H						
	LT275/65R20	126/123				R					
	35X12.50R20	121				R	Q				
19	37X12.50R20	120				XL R ↙	Q				
	38X15.50R20	125					Q				
	40X15.50R20	130					Q				
	50	235/50R19	99			V					
	55	225/55R19	99			V					
60	235/55R19	101				V			V		
	245/55R19	103				V					
	P255/60R19	108			H						
	18	55	215/55R18		99		XL V				
225/55R18		98				V	H				
235/55R18		100				V			V		
255/55R18			109		XL V						
225/60R18		100			H				H		
235/60R18		103	107		XL V		XL H		V		
245/60R18		105			H		H ↙		H		
255/60R18		108	112	XL V / H ■							
265/60R18		110		H			H				
275/60R18		113		H			H				
285/60R18		116		H			H				
P245/60R18		104		H							
P255/60R18		107		H ◆							
P265/60R18		109		H							
65		225/65R18	103				H				
235/65R18		106				H				H	
265/65R18		114					H				
275/65R18		116					H				
LT275/65R18		123/120					S				
LT285/65R18		125/122					S				
P235/65R18		104				T					
P255/65R18		109			T						
P265/65R18		112			T						
P275/65R18		114			T						
70		255/70R18	113					H			
	265/70R18	116			H ☹		H				
	LT265/70R18	124/121					R				
	LT275/70R18	125/122					S				
	LT295/70R18	129/126					S				
	P255/70R18	112			H						
	P265/70R18	114			S						
	75	LT285/75R18	129/126					S			
75	35X12.50R18	123					R				
	37X12.50R18	123					R ↙				
	38X13.50R18	126						Q			
	40X13.50R18	122						Q			
17	55	215/55R17	94			V					
	225/55R17	97				V					
	60	235/55R17	99				H				
		215/60R17	96				H				
		225/60R17	99				H	H ↙			
		235/60R17	102				V	H ↙			
	255/60R17	106				H					
	P275/60R17	110								H	
	65	225/65R17	102					S ↙			
	235/65R17		108			H	H				
	245/65R17	107	111		XL V		XL H				
	255/65R17		114	XL H	H ☹		XL H				
	265/65R17	112		H			H				
	275/65R17	115		H			H				
	285/65R17	116		H			H				
	P245/65R17	105		T			T				
	P255/65R17	108		T							
	P265/65R17	110		T			T				



# Basic Tyre Knowledge

## How to Read Tyre Size

205 / 65 R 15 94H

1 2 3 4 5 6

165 / R 13C 94/92 P

1 3 4 11 10 5

235 / 45 ZR 17 97Y

1 2 7 4 5 6

P235 / 70 R 17 108S

12 1 2 3 4 5 6

31 x 10.50 R 15 109S

8 9 3 4 5 6

LT315 / 75 R 16 113Q

13 8 2 3 4 5 6

Overall width

Normal rim diameter

Overall diameter

235/45R17 93W

11 C: Commercial vehicle

12 P: Passenger car tyre

13 LT: Light Truck

1 Nominal section width (mm)  
This refers to the width of the tyre excluding design and lettering on the sidewall, etc.  
\*Does not include rim guard.

2 Aspect ratio (series,%)  
This figure indicates the ratio of a tyre's height  
  
Aspect ratio(%)=  
Tyre height÷tyre width×100

3 Construction code  
"R" stands for radial structure.

4 Nominal rim diameter (inches)  
Refers to the diameter of the wheel rim suitable for the tyre. The term "tyre's inner diameter" is also used.

5 Load Index (LI)  
An index expressing the maximum load permitted for a tyre under established conditions.

6 Speed symbol  
This indicates the maximum permissible speed in symbols under established conditions.

7 Speed category  
(ZR: over240km/h)

8 Nominal outside diameter (inches)

9 Nominal section width (inches)

10 Load Index: Single/Dual

11 C: Commercial vehicle  
Complies with ETRTO(European tyre regulations).

12 P: Passenger car tyre  
Complies with TRA(North American tyre regulations).

13 LT: Light Truck  
Complies with JATMA (Japanese tyre regulations) or TRA (North American tyre regulations).

## Speed Symbol

The speed symbol refers to the maximum speed capability of a tyre. It is only valid for a tyre that is properly inflated and loaded within the limits of the assigned load index.

Speed symbol	Speed(km/h)
N	140
P	150
Q	160
R	170
S	180
T	190
H	210
V	240
W	270
Y	300
(Y)	Over 300

Speed category	Speed(km/h)
ZR	Over240

## Meaning of "BluEarth concept" mark

The BluEarth concept mark is imprinted on the side of the tyre together with the product logo. It indicates that the tyre was developed consistently to be "environmentally, humanly and socially friendly."

# Sidewall Information

A variety of information about a tyre appears on its sidewall. Knowing how to identify the markings can be useful when choosing a tyre.

- 1 YOKOHAMA: Manufacture's name
- 2 ADVAN Sport: Brand Name
- 3 205/55R16 91W: Tyre Size Designation
- 4 V105: Tread Pattern Name
- 5 Country of Origin
- 6 Identification Serial Number
- 7 MAX LOAD, MAX PRESS
- 8 Safety Warning

## Asymmetrical tread pattern and specified tyre rotation

Tyres with a directional pattern need to be mounted according to the indications on the sidewalls to ensure maximum performance. Make sure you take note of the directional pattern when mounting the tyre.

### Unidirectional tread pattern

Tread pattern of AS01

### Asymmetrical tread pattern SIDE FACING OUTWARDS (INWARDS)

Tread pattern of V551

Sidewalls indicate whether they should face inwards or outwards.

It is vital to take note of the arrow when rotating tyres to ensure that the tyres are mounted in the correct direction.

## OE approval mark by automakers

Some tyres may include a mark of approval from a specific automaker on the sidewall. There is no difference in basic performance if the tyres are of the same size and pattern, irrespective of whether the mark is evident or not.

AO is Audi approved mark.

B1 is a Bentley approved mark.

MO is a Mercedes-Benz approved mark.

N-1 and N-0 are Porsche approved mark

LTS is a Lotus approved mark.

43

44



# Runflat Tyre

YOKOHAMA runflat tyres can be driven on at zero pressure

YOKOHAMA has developed self-supporting Z.P.S (Zero Pressure System) brand runflat tyres exclusively constructed and contoured to simultaneously realize reassuring handling, comfort and performance as well as runflat capabilities. The tyres also provide ample mobility to enable a driver to keep on driving for a certain distance at a reduced speed after inflation pressure loss.



## ADVAN Sport Z.P.S

### ZPS contour

Exclusive contour realizing high durability under zero pressure condition and high-speed performance

### ZPS side reinforcement

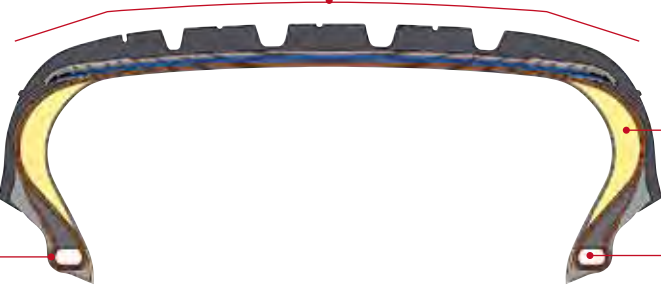
Original low heat generating compound supports vehicle's weight in case of air loss.

### ZPS bead filler

Exclusive bead filler designed to match ZPS reinforcement delivers a high level of comfort under normal operation and high rigidity in a zero pressure situation

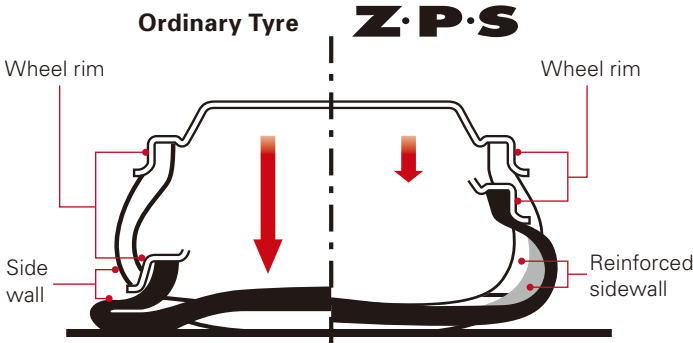
### ZPS rigid bead wire

Reduces the risk of the bead unseating after loss of air pressure



ZPS = Zero Pressure System

### Cross-section of a tyre at zero pressure (Image)



### Important notice about use of runflat tyres

- **A vehicle must be equipped with a tyre pressure monitoring system.**  
A vehicle must be fitted with a tyre pressure monitoring system to warn the driver of air leakage when a runflat tyre needs repair.
- **After a low pressure warning has been indicated:**
  - Do not exceed 80km/h (50 mph).
  - Do not travel more than 80km (50 miles).
  - Do not re-inflate after runflat operation and do not repair.

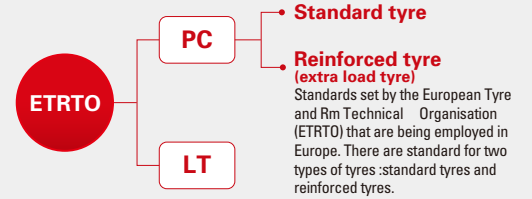
# Air Pressure, Load Index (LI)

Points to note when fitting Extra Load (XL) /Reinforced (RF) tyres

### What are Extra Load (XL) / Reinforced (RF) tyres?

ETRTO reinforced tyres are set with higher air pressure and load capacity than ETRTO standard tyres. Air pressure for ETRTO standard tyres is set at 250kPa when at maximum load capacity, whereas it is set at 290kPa for ETRTO reinforced tyres. The higher air pressure enables a heavier load. It is necessary to increase the volume inside the tyre in order to support heavier vehicles. However, with ETRTO reinforced tyres, the load index is large, making it possible to support a heavier vehicle even when the tyres are the same size increasing air pressure.

It is necessary to fill up the tyres to the appropriate air pressure when fitting reinforced tyres (extra load tyres).



### Points to note due to differences in standard for tyres of identical size

The load index differs between JATMA standard and ETRTO reinforced tyres even when the size is the same, which means the suitable air pressure also differs. In case you fit tyres of differing standards, it is necessary to fill the tyres to a suitable pressure in accordance with the particular standard.

### In case you switch from JATMA standard to ETRTO standard reinforced tyres

(Original equipment size: 215/45R17, Specified air pressure: 240kPa)

LI	Air pressure(kPa)			
	180	220	230	240
86	450	505	515	530
87	460	520	530	545
88	475	530	545	560

#### JATMA standard

The LI for JATMA standard 215/45R17 tyres is 87, with a load capacity at 240kPa of 545kg.

LI	Air pressure(kPa)			
	200	230	240	250
90	440	500	515	535
91	450	510	530	545
92	470	525	540	560

#### ETRTO reinforced tyres

The LI for ETRTO reinforced 215/45R17 tyres is 91. It is necessary to have air pressure of 250kPa to maintain a load capacity of 545kg.

### Chart of LI, air pressure and load capacity (Simplified version; Produced by Yokohama Rubber)

LI	Air pressure(kPa)							
	180	190	200	210	220	230	240	250
80	380	395	405	415	430	440	450	-
(185/55R14)	345	360	375	390	405	420	435	450
81	390	405	415	425	440	450	462	-
82	400	415	425	440	450	465	475	-
(185/55R15)	365	380	395	415	430	445	460	475
83	410	425	440	450	465	475	487	-
(185/55R16)	375	390	405	425	440	455	470	487
84	425	435	450	460	475	490	500	-
(175/65R15)	385	400	420	435	450	470	485	500
85	435	450	465	475	490	500	515	-
(195/55R15)	395	415	430	450	465	480	500	515
86	450	460	475	490	505	515	530	-
(205/50R15)	410	425	445	460	480	495	515	530
87	460	475	490	505	520	530	545	-
(195/55R16)	420	440	455	475	490	510	525	545
88	475	490	505	520	530	545	560	-
(205/55R15)	430	450	470	485	505	525	540	560
89	490	505	520	535	550	565	580	-
90	505	525	540	555	570	585	600	-
91	520	535	555	570	585	600	615	-
(235/40R18)	475	495	515	535	555	575	595	615
(225/45R17)	530	550	565	585	600	615	630	-
(205/55R16)	485	505	525	550	570	590	610	630
92	550	565	585	600	620	635	650	-
(215/55R16)	500	520	545	565	585	610	630	650
94	565	585	600	620	635	655	670	-
(235/45R17)	515	540	560	585	605	625	650	670
95	585	600	620	640	655	675	690	-
(215/55R18)	530	555	575	600	625	645	670	690
96	600	620	640	655	675	695	710	-
(205/70R15)	545	570	595	620	640	665	685	710
97	615	635	655	675	695	710	730	-
(255/40R20)	560	585	610	635	660	685	705	730
(225/55R17)	635	655	675	695	715	730	750	-
98	675	695	715	735	755	775	795	-
(245/45R19)	625	645	665	685	705	725	745	765
(225/55R18)	655	675	695	715	735	755	775	-
99	675	700	720	740	760	780	800	-
100	695	720	740	765	785	805	825	-
(285/35R20)	615	640	670	695	720	750	775	800
(235/55R18)	665	690	715	735	760	780	805	825
(215/70R16)	720	740	765	785	810	830	850	-
101	685	710	735	760	780	805	830	850
(245/50R20)	740	765	785	810	830	855	875	-
(225/65R17)	705	730	755	780	805	830	850	875
(215/80R15)	760	785	810	830	855	880	900	-
102	780	805	830	855	880	900	925	-
103	745	775	800	825	850	875	900	925
(255/55R18)	745	775	800	825	850	875	900	925
(245/60R16)	745	775	800	825	850	875	900	925

(Unit of load capacity: kg)

### Chart of ETRTO reinforced tyres/LI, air pressure and load capacity (Simplified version)

LI	Air pressure(kPa)									
	200	210	220	230	240	250	260	270	280	290
85	385	400	415	430	445	462	470	485	500	515
86	395	415	430	445	460	475	485	500	515	530
87	405	425	440	455	470	487	500	515	530	545
88	420	435	450	470	485	500	515	530	545	560
89	430	450	465	480	500	515	530	550	565	580
90	445	460	480	495	515	530	550	565	585	600
91	455	475	490	510	525	545	565	580	600	615
92	470	485	505	525	540	560	575	595	615	630
93	485	505	525	545	560	580	595	615	630	650
94	500	520	540	560	580	600	615	635	650	670
95	515	535	555	575	595	615	630	650	670	690
96	525	550	570	590	610	630	650	670	690	710
97	545	565	585	610	630	650	670	690	710	730
98	560	585	605	625	650	670	685	710	730	750
99	575	600	625	645	670	690	710	730	755	775
100	595	620	640	665	685	710	735	755	780	800
101	610	635	660	685	705	730	755	780	800	825
102	625	650	675	700	725	750	775	800	825	850
103	650	675	700	725	750	775	800	825	850	875
104	670	695	720	750	775	800	825	850	875	900
105	690	720	745	770	800	825	850	875	900	925
106	710	740	765	795	825	850	870	895	925	950
107	730	760	790	820	845	875	895	920	950	975
108	755	785	815	840	870	900	915	945	970	1000
109	775	805	835	865	895	925	945	975	1000	1030
110	795	825	860	890	920	950	970	1000	1030	1060

(Unit of load capacity: kg)

### Make sure reinforced tyres have the correct air pressure!

The Load Index (LI) differs between JATMA standard and ETRTO reinforced tyres even when the size is the same. It is important to ensure the correct air pressure when inching-up to reinforced tyres (extra load tyres).

**Be sure that the Load Index (LI) of the tyre is not lower than the original equipment tyre. \*Excludes exceptions**

### In case of inching-up from 215/60R16 to 225/45R18

(Original equipment size: 215/60R16 95H, Specified air pressure: 200kPa)

LI	Air pressure(kPa)			
	180	190	200	210
94	565	585	600	620
95	585	600	620	640
96	600	620	640	655

The LI for JATMA standard 215/60R16 tyres is 95, with a load capacity at 200kPa of 620kg.

LI	Air pressure(kPa)			
	180	220	230	240
90	505	570	585	600
91	520	585	600	615
92	530	600	615	630

The LI for JATMA standard 225/45R18 tyres is 91. It is not possible to fit these tyres since the LI falls below that of the original equipment size tyres, so the load capacity cannot be satisfied.

LI	Air pressure(kPa)				
	200	240	250	260	270
94	500	575	595	615	635
95	515	595	615	630	650
96	525	610	630	650	670

The LI for ETRTO reinforced 225/45R18 tyres is 95. It is possible to maintain the necessary load capacity by setting the air pressure above 260kPa.



# YOKOHAMA at a Glance

## Business Overview

Since its establishment in 1917, The Yokohama Rubber Co., Ltd. (YRC) has introduced a wide range of tyre, industrial, golf and other products. For the benefit of every customer and society, we are dedicated to continuously advancing all production, sales and technology development processes within the YOKOHAMA Group in Japan and throughout the world. Our mission is to “deliver the best products at competitive prices and on time.” This, of course, requires utmost attention to safety and environmental concerns. Each and every member of the YOKOHAMA Group puts great passion and commitment into providing leading technologies and products that meet the needs of the times. Our earnest hope is to contribute to the well-being of people, society and the world.

## Tyre Group

By developing and manufacturing a wide range of high-quality tyres, we earn the trust of people across the spectrum of society who rely on YOKOHAMA products. These range from car tyres with a distinctive flair to reliable truck and bus tyres that support essential transport and logistics needs and extra-tough off-the-road tyres at resource development, mining and construction sites.

### A focus on environmentally friendly tyres

YOKOHAMA's eco tyres contribute to fuel economy—and to minimizing the output of carbon dioxide—while providing superior performance in regard to the fundamental criteria of handling and comfort. Recent progress in extending tyres' useful life has further increased their environmental benefits.

### Global scope in high performance tyres

We began marketing our high performance ADVAN tyres worldwide in 2005 as a global brand aimed at raising the market profile of YOKOHAMA tyres. ADVAN tyres feature state-of-the-art advances in maximizing every aspect of tyre value.

### Passenger Car Tyres

In line with various drivers' preferences, YOKOHAMA boasts a tyre lineup that meets a diversity of driving scenarios, including tyres for sports cars, luxury sedans, sport utility vehicles and dress-up vehicles as well as studless tyres. Passenger car tyres, which respond to all kinds of driving needs such as riding comfort, handling performance, environmental features and a quiet ride, are the embodiment of YOKOHAMA's technologies.



### Light Truck Tyres

Light truck tyres must be able to stand up to a variety of conditions and adapt to a range of delivery and transport needs in urban environments. Combining superior grip on wet surfaces with high durability and wear resistance, these tyres offer economical efficiency while remaining environmentally friendly, thereby supporting the logistics of peoples' daily lives.



### Truck & Bus Tyres

Truck and bus tyres are required to adapt to a wide array of seasonal, surface and other conditions in addition to basic performance such as being economically efficient with high durability and safety. YOKOHAMA supplies a wide variety of truck and bus tyres worldwide to meet such requirements. To this end, YOKOHAMA is promoting various theories and technological and material development in pursuing a new era of logistics, beginning with the Maintenance Saving Concept for minimizing uneven wear as well as the “STEM 2” theory, which incorporates into design the behavior and change in tyre shape according to load, and the development of a compound that is resilient to chipping and wet rolling.



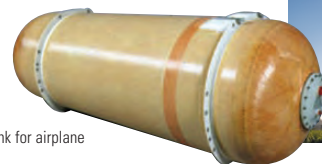
### Off-the-Road Tyres

Off-the-road tyres are utilized for large-scale machinery at construction and mining and other sites with no roads. YOKOHAMA has dedicated off-the-road tyre plants that produce tyres with durability and heat tolerance for global markets. Off-the-road tyres offer substantial support for machinery used at various civil engineering sites, including ultra-large dump trucks, earth and sand scrapers, wheel loaders for carrying earth and gravel at mining and dam construction sites, bulldozers for earth removal and graders for road construction and snow removal.

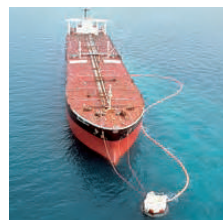


## Multiple Business Group

In addition to being a leading manufacturer in the global tyre industry, YRC also applies original strengths in rubber polymer technology in successful lines of diversified business, including hoses, sealants and adhesives, other industrial products aircraft products and golf products.



Water tank for airplane



Marine hoses

## Environment

We challenge to build a sustainable society in harmony with the environment, to protect our blue planet and human beings.

Currently, society faces various issues such as the depletion of natural resources, climate change, and the destruction of ecosystems, and all business activities have an impact on the environment. Furthermore, it is also a fact that changes in the environment can lead to major risks involving business continuity. For this reason Yokohama Rubber works to minimize its environmental footprint in all business processes. As part of these efforts, environmental assessments are conducted on the items of global warming prevention, resource recycling, resource conservation, and safety and comfort, and only the products that fulfill the criteria are released on the market in order to expand environmentally friendly products. This way of thinking and these activities have been clearly stated in the Environmental GD100 and Yokohama Rubber Environmental Policy as declarations both inside and outside of the company of our position as top-level environmentally-friendly company. In addition, the actions that should be taken by employees are stipulated in the Yokohama Rubber Group Action Guidelines.

### Environmental initiatives

#### Boosting global environmental management

The Yokohama Rubber Group pursues sustainable business management and a harmonious relationship with the environment by way of uniformization of global environmental management in the areas of 1) achieving a low-carbon society, 2) realizing a zero-waste/recycling society, and 3) biodiversity conservation. To realize a low-carbon society, we manufacture environmentally friendly products and reduce greenhouse gases (GHG) throughout the value chain in line with medium- and long-term plan goals. To achieve the zero-waste/recycling society, we are moving forward with rubber recycling, reducing production-stage waste levels, and boosting the number of production locations that achieve zero emissions. To facilitate biodiversity conservation, we implement surveys and conservation efforts to secure a stable supply of natural rubber in overseas locations and to cut water risks in production location areas.

#### What is the significance of environmentally friendly products?

Life Cycle Assessment (LCA) methodology that assesses numerical data on how a product impacts the environment (in terms of CO2 emissions) at the various stages from production through disposal. According to the company's Life Cycle Assessment, the Yokohama Rubber Group's main products—our tyres—stand at a level of 80-90% of the entire life cycle in terms of CO2 emissions at the use stage. In light of these circumstances, Yokohama Rubber works hard to engender fuel-efficient and environmentally friendly products. New products offered by the Yokohama Rubber Group are subjected to environmental assessment at the early development stage. These products must clear the company's environmental impact stipulations\* at the design review stage in order to be approved for development. This system ensures that our new products have a positive impact on the environment.

\*Definition of environmental impact stipulations: The average score for the four categories of global warming prevention, resource recycling, resource conservation, and safety and comfort surpasses that of conventional products by at least %5, and the product does not negatively impact the environment in any of the four categories.

### Biodiversity conservation promotion

We are moving forward with biodiversity conservation as part of environmental symbiosis initiatives. Yokohama Tire Manufacturing (Thailand) (YTMT) launched biodiversity conservation projects as of 2013—the Group's first overseas location to do so. The site features a biotope pond on the premises for the purpose of monitoring the impact of the company's production activities on the environment, by way of research on butterflies and dragonflies. The data collected enables us to assess biodiversity levels on the plant premises, as well as facilitating methodology to both maintain and enhance biodiversity. At the same time it is also utilized by people in the vicinity for study and information-sharing purposes. The goal is to move ahead with this project engaging the entire local community.



Informative Event on Biodiversity (Activities Thailand)



Biotope creation in progress



# YOKOHAMA at a Glance

## Research and Development

Reliable technology based on world-class research and development is essential for developing and providing YOKOHAMA products that are safe and reliable, while also helping to preserve the environment. At every stage of design, testing and assessment, YOKOHAMA takes a comprehensive multi-faceted approach toward realizing advances in macromolecular and other technologies to make materials and products as beneficial as possible.



### RADIC

RADIC (Research and Development Integrated Center) has been at the core of YOKOHAMA's leading-edge R&D operations since being established in 1991. State-of-the-art instruments such as supercomputers, electron microscopes, ESCA (electron spectroscopy for chemical analysis) systems and a nuclear magnetic resonance spectrometer are used in pursuing materials development and product design and in conducting simulations under various conditions.



### D-PARC

D-PARC (Daigo Proving-ground and Research Center) is YOKOHAMA's comprehensive tyre test course facility that includes a speed oval course, steering and stability track, comfort test track with multiple surfaces made of materials sourced from around the world and handling test track simulating winding road conditions.



### TIRE TEST CENTER OF HOKKAIDO

The Tire Test Center of Hokkaido in Asahikawa City, Hokkaido is a vehicle test course for winter tyres including studless tyres. The sizable grounds, which are roughly four times the size of conventional winter tyre test courses, are equipped with various facilities including: approximately one kilometer snow track, ice track, hill climbing track, snow and ice circle, plus handling track. All in all, this course boasts optimal conditions for real vehicle testing under severe winter conditions for the long period stretching from the end of December through the following February, when temperatures are consistently below freezing.



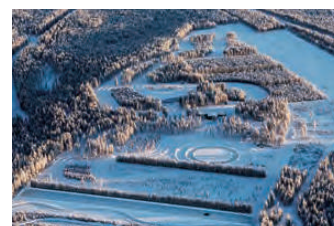
### TIRE TEST CENTER OF ASIA

TIRE TEST CENTER OF ASIA is a large-scale proving ground that uses peripheral road tracks to recreate general roads found around the world, with the overriding aims of raising quality, strengthening performance evaluations, improving quality and enhancing high-speed driving testing of tyres for passenger cars, light trucks, and trucks and buses. Special test courses and wet test courses simulating various road conditions enable multi-faceted tests covering all aspects of driving ranging from handling stability, fuel economy and durability to noise, vibration and riding comfort. The proving ground was built adjacent to Yokohama Rubber (Thailand) Co., Ltd., a tyre production and sales company in Thailand. This close location enhances the ease of collaboration with production and development divisions and better enables the results of driving and evaluation testing to be applied to the development of new tyres.



### YOKOHAMA TEST CENTER of SWEDEN

The YOKOHAMA TEST CENTER of SWEDEN is a vehicle test course with which we have a long-term rental contract with Arctic Falls for winter tyre testing. There are various test courses on the grounds, all of which are self-contained. Development of passenger car tyres is conducted here. Temperatures are consistently below freezing over the period of approximately November through April of the following year, enabling winter tyre testing with real vehicles over the long term.



## Motorsports

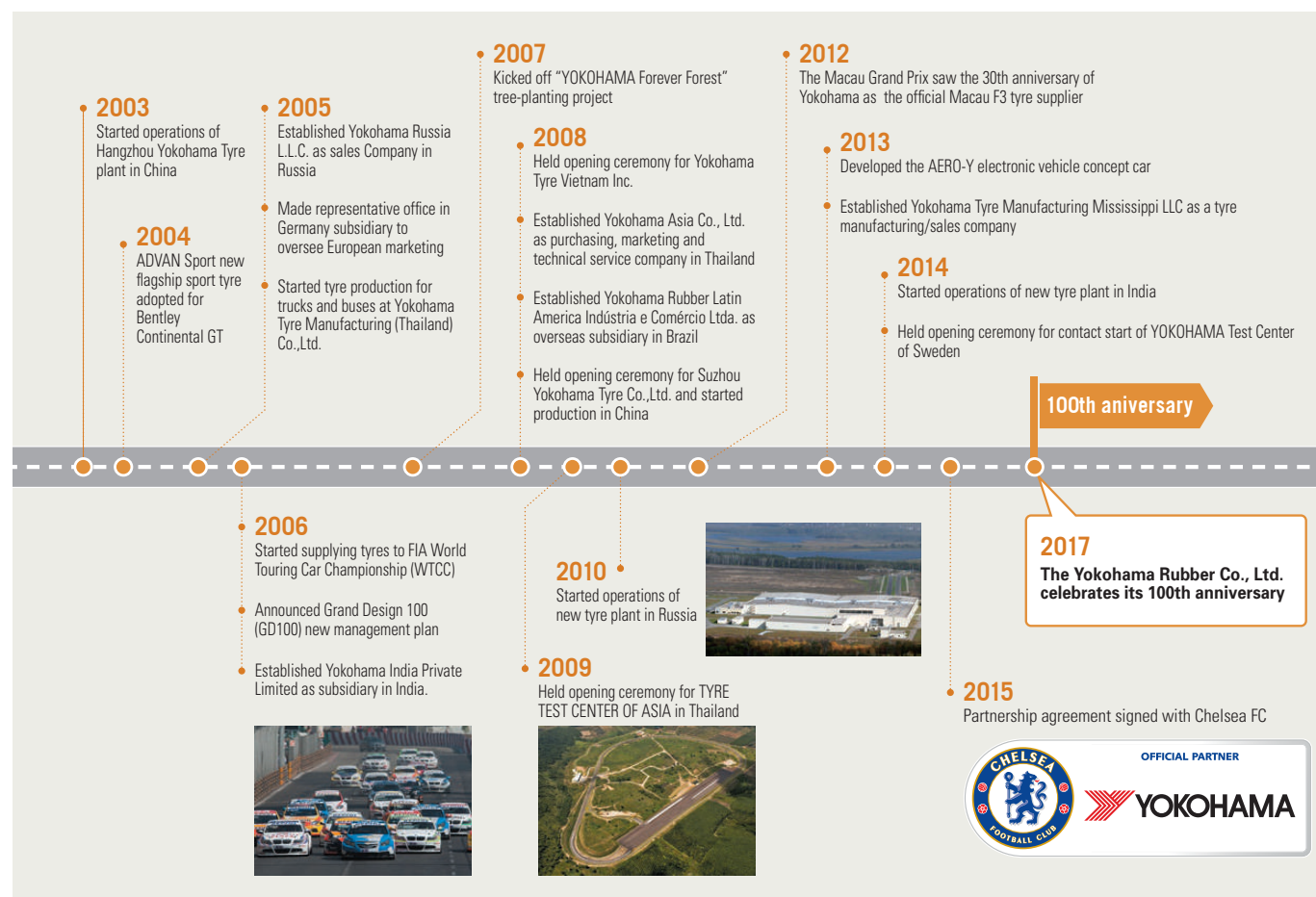
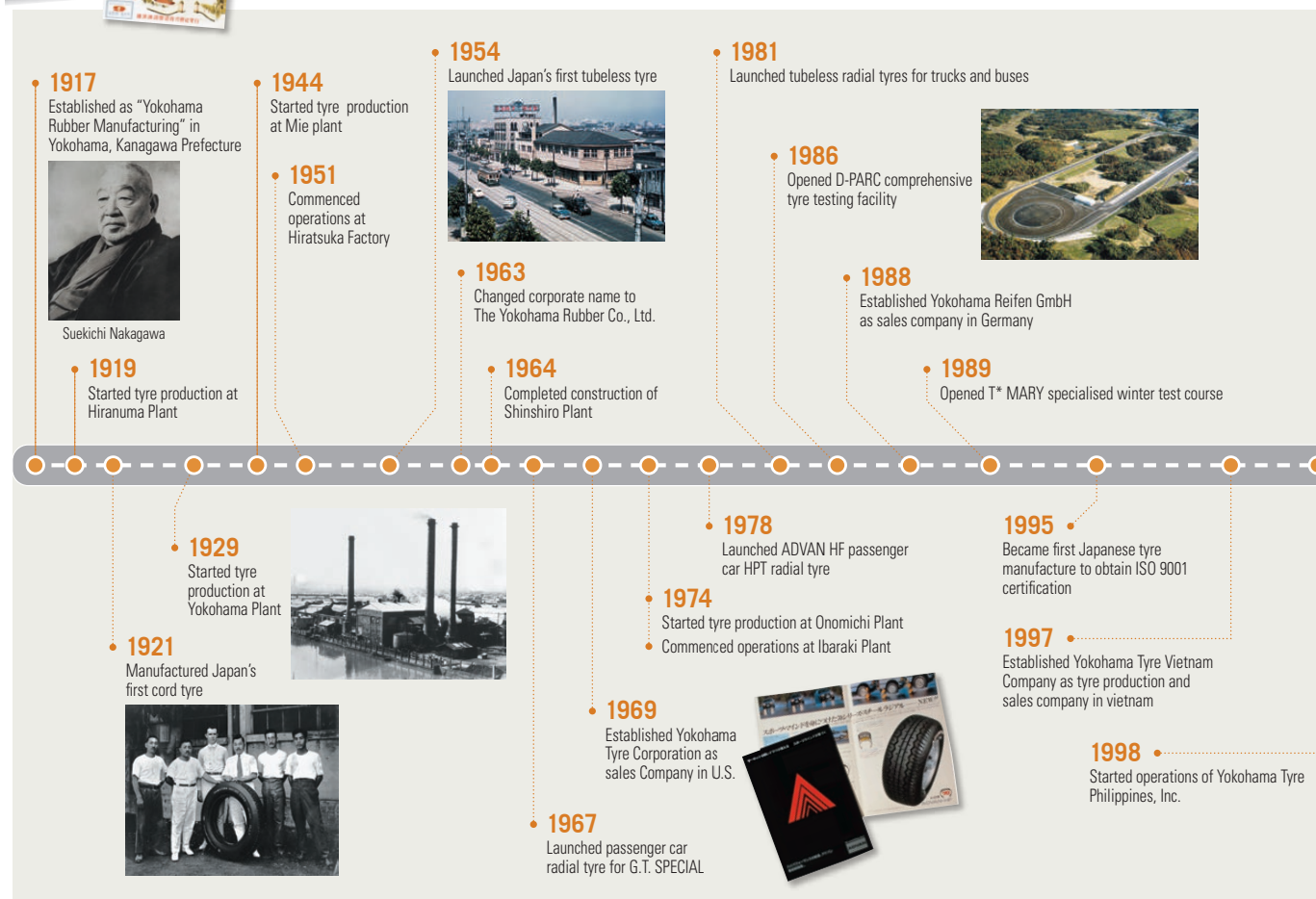
YOKOHAMA participates in a wide range of motorsports events including races and rallies. While achieving a superb legacy in various categories, YOKOHAMA also provides Competition tyres to teams in Japan and overseas with excellent results.

Motorsports activities play a vital role in contributing to tyre development. The cutting-edge macromolecular and design technologies for tyres installed on racing vehicles are being employed in the development of tyres sold in the broader market and greatly contribute to improvements to produce high-performance tyres. The motorsports arena, marked by fierce competition between the latest technologies, serves as a crucial testing medium for creating tyres of the future.





# History



# For Your Comfort & Safety

## Tyre inflation

- Tyre inflation should be done in a safety cage.
- Never inflate beyond 275kPa (2.75bar, 40psi) to seat beads.
- Tyre performance may decline when foreign objects or water enter the tyre. Before mounting a tyre, inspect and remove any foreign objects and water inside of it.
- Periodically drain water from the compressor, otherwise the water may be transferred to the inside of the tyre.
- Before inflating air and attaching the valve cap, make sure that no air is leaking from the valve core, the tyre fits properly on its rim and no air is leaking from around the valve.

## Tyre damage

Never use a tyre under the following conditions and replace tyres immediately:

- If the tread is worn down to the tread wear indicator
- If breaks in the fabric appear
- If cords or wires are exposed

## Point to note when choosing a tyre

- Outer diameter of the wheel should be the same as the inner diameter of the tyre.

## Inspect for foreign objects and damage

- Stones, gravel and other foreign objects stuck in the tyre treads may damage the tyre. Remove foreign objects from the tyre treads.
- Such objects and obstacles in the road as potholes, glass, metal, rocks, wood debris, and kerbstones which could damage a tyre should be safely avoided.

## Break-in period

- Make sure to break new tyres in by driving under 80km/h for no less than 100km in the case of summer tyres.

## Points to note regarding tyre/rim attachment

- Adjust wheel balance to prevent abnormal vibration and uneven wear.
- Mount tyres according to the rotation direction specified on the sidewall as indicated.
- Use a torque wrench to fasten wheel nuts to the specified torque. When using an impact wrench, do not tighten the nuts too tightly. Check with a torque wrench.
- After attaching the wheels to the vehicle and travelling 50-100km, refasten the wheel nuts to the specified torque.
- Make sure the tyre is not touching the vehicle body when you attach it.
- Never mount a tyre on a rim that is damaged or which has been repaired by welding or brazing.
- Do not mix different tyre size designations or constructions on the same axle, except for limited use of temporary spare tyres.
- Tyres should be mounted only by professionally trained persons.

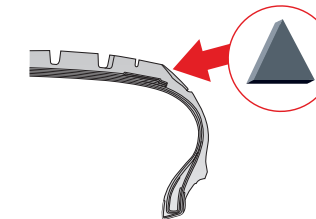
## Important notes on air pressure

- Make sure to follow instructions in the car owner's manual or on the vehicle tyre information placard in the car to maintain proper tyre pressure, particularly for driving on highways and carrying heavy loads.
- Never bleed or reduce air pressure when tyres are hot from driving.
- Over- or under-inflation is dangerous and could lead to accidents or tyre damage.
- Check tyre (including spare tyre) inflation pressure at least once a month and before ever long trip.

## Wear limit

- Tyre use should be discontinued once the remaining tread depth reaches 1.6mm, as shown by the tread wear indicator. Change to new tyres before this happens.

## Tread Wear Indicator



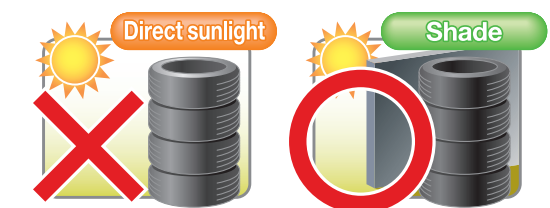
### Triangle marks (▲)

On the sidewall show the tread groove position of the "tread wear indicators", and these "tread wear indicators" indicate that 1.6mm of tread depth remain at which time tyre should be replaced.

## Important points for safe driving

- To enhance traffic safety and extend tyre life, YOKOHAMA recommends driving safely and avoiding unnecessarily hard acceleration, braking or cornering.
- If you feel that the car is unstable or making any unusual noises or vibrations, stop the car in a safe place and inspect its tyres. Even if no visible defects are found, drive slowly and ask your tyre dealer to inspect the tyres as soon as possible.
- To enhance traffic safety, YOKOHAMA recommends driving substantially slower under adverse weather or road conditions.
- When inspecting the tyres, also check for degradation and cracks in the valve. Be sure that the valve cap has been fastened properly.

## How to store tyres



**Direct sunlight or rain may cause a change in color or cracking, etc.**

Storing tyres outside where they are exposed to direct sunlight or rain accelerates rubber degradation.

- Keep tyres under cover to ensure water does not get inside tyres.
- Do not keep tyres in places where they are likely to come in contact with oil or water as well as be damaged or change shape
- Do not keep tyres near generators or batteries.
- Do not store tyres over long periods since materials within tyres become more likely to be discharged and stain the ground.

## Wheel alignment

- In the event of a problem with the suspension system of a vehicle, driving stability may be compromised and the tyres may wear abnormally. Please check and adjust wheel alignment to make sure it is correct.





# Check your tyres once a month to maintain performance and ensure safety.

Check!

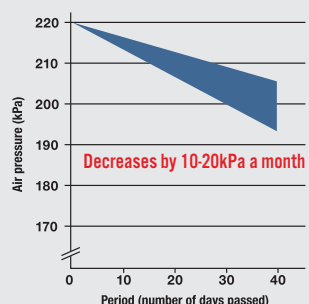
## Do you know about optimal air pressure?

### Optimal air pressure varies according to each car.

Please check the sticker attached near the door on the driver's seat side for details regarding air pressure.

#### Tyre air pressure decreases naturally by 10-20kPa every month.

Tyre size: 195/65R15 Starting pressure: 220kPa (100kPa=1.0kgf/cm<sup>2</sup>)



Regularly check your tyres to maintain optimal air pressure.

(Source: JATMA, 2009)

#### Too high or too low air pressure causes problems!

Approximately two in every five vehicles are running on poorly maintained tyres and the tyre air pressure of approximately 80% of these vehicles is improper.

Poor maintenance rate in 1999

Poor maintenance rate in 2009

Running over nails, foreign objects 1%

External damage 1%

Uneven tyre wear 8%

Insufficient tread depth 4%

Other 4%

Improper air pressure 78%

(Source: JATMA, 2009)

## When tyre air pressure decreases ...

### 1 Fuel consumption gets worse!

Rolling resistance increases and leads to a decrease in fuel economy due to energy loss.

### 2 Tyres are more likely to wear unevenly!

Too low air pressure usually causes uneven tyre wear on the outer edge of the tyre tread whereas too high air pressure is more likely to cause uneven wear on the center of the tread.

### 3 Driving performance declines!

Tyre deformation is more likely to occur, compromising stability. Additionally, even if it's a high performance tyre, driving performance cannot be maintained, thereby affecting safety.

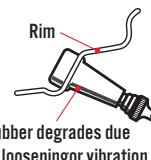


We recommend replacing the tubeless valve stem when replacing tyres.

#### When tyre valves deteriorate, it is more likely to cause air leakage.

• Since tubeless valves are made of the same rubber material as tyres, they deteriorate over time due to heat and other factors.

Loosening of valve attachment part



• Air leak from degraded part  
Rubber degrades due to loosening or vibration

Degradation of valve core rubber

Check!

## Have you checked your tread depth?

### Let's check for indications of tread wear.



Image



Image

\*Circled areas are marked in color for explanatory purposes.

An indication of tread wear is when the tread depth drops to approximately 1.6mm.

## When the tread is worn down ...

### 1 The brakes are likely to become less effective on wet roads!

When the tread depth drops below roughly 50% of new tyres, the brake performance of tyres on wet roads will gradually decline and the braking distance increases significantly.

### 2 Driving at high speeds in the rain is particularly dangerous!

When the tread depth decreases, drainage capability declines and it is more likely to cause slippage in rainy weather. Aquaplaning tends to occur and diminish steering and brake effectiveness especially when driving at high speeds.



Using a tyre with indications of tread wear is prohibited as stipulated by laws and regulations.

Tread depth 8mm

(New tyre)



Tread depth 4mm

(50% wear)



Tread depth 1.6mm

(80% wear)



Indications of tread wear

Relationship of tread depth and braking distance in wet road surface conditions

Tyre size: 165SR13 radial rib

Initial braking speed: 80km/h

Road surface: Asphalt

Tread depth 8mm (New tyre)

40m

Tread depth 4mm (50% wear)

50m

Tread depth 1.6mm (80% wear)

60m

Dangerous!

(Source: JATMA)

Tyres with a tread depth of 1.6mm or less are not allowed to be used as stipulated by laws and regulations.

Check!

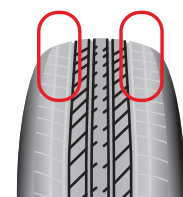
## Do You have uneven tyre wear?

### Uneven tyre wear reduces the useful life of tyres.

• Centre wear  
Wear at the centre of the tread caused by too high air pressure

• Shoulder wear  
Wear on the outer edges or shoulders caused by insufficient air pressure

• One-sided wear  
Heavy vehicles such as minivans are more likely to cause tyre wear on one side



## Normally, front tyres wear out quickly when tyres are not rotated.

Tyre rotation is recommended on a regular basis (roughly every 5,000-7,000km).



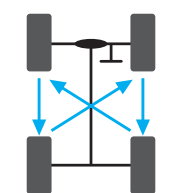
### Benefits of tyre rotation

- Prevention of uneven tyre wear
- Extension of useful life of tyres
- Consistent level of tyre wear

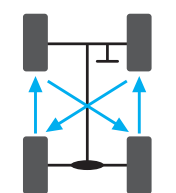
\*Front tyres of FWD vehicles wear out more quickly than rear tyres since front tyres serve both as driving and steering wheels.

#### General method of rotation

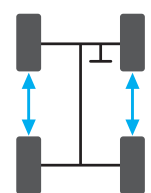
FWD vehicles



RWD vehicles



Directional pattern



Early adjustment is recommended when tyre wear is caused by misalignment.



Early tyre replacement is recommended when tyres are reaching advanced stages of wear.



Check!

## Do you have damage or cracks on your tyres?

### These can cause problems such as a flat tyre.

• Side cut (general exterior damage)



• Checking (ozone crack)



• Scratching (friction between tyre and car body, etc.)



• Tread tear (groove crack)



#### Main causes of damage

- Coming into contact with the curb or other obstacles on the road.
- Foreign objects such as rocks lodged in the tyre.

#### Main causes of checking

- Excessive bending and stretching due to insufficient air pressure, etc.
- Concentration of stress on certain parts due to damage, etc.
- Degradation caused by UV rays, heat, etc.
- Overload and other causes due to running on curbs, etc.

Early tyre replacement is recommended since damage or checking can cause problems.

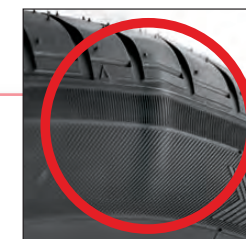


Check!

## Are surface irregularities on the side of your tyres normal?

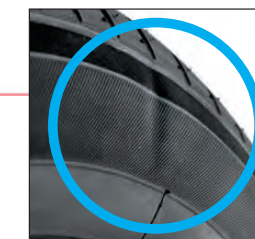
Bulge on the sidewall of a tyre

Dent on the sidewall of a tyre



When a certain area of the tyre sidewall is partially protruding, a cord may have broken internally due to external causes such as shock, and is therefore dangerous.

Replace the tyre immediately.



There are cases in which a dent occurs and extends toward the sidewall area of a tyre. Such dents occur due to the internal structure and have no effects in terms of safety.

This is not a sign of a defective tyre.