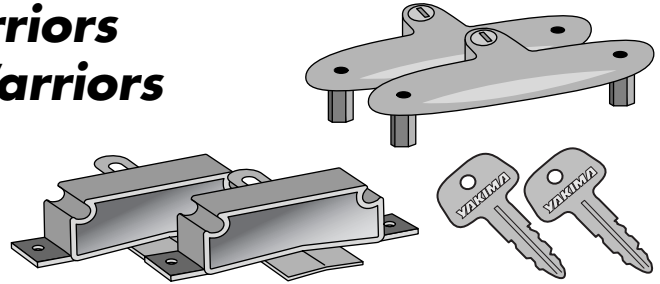
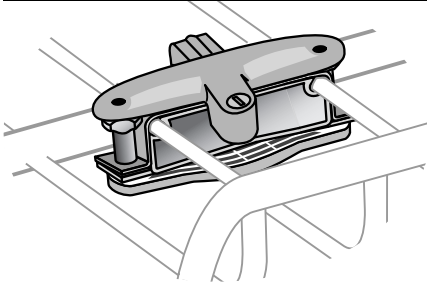


# YAKIMA

# Locking Bracket

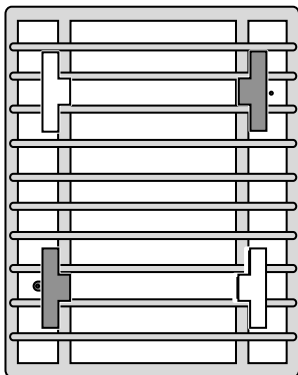
## for LoadWarriors and MegaWarriors



### IMPORTANT WARNING!

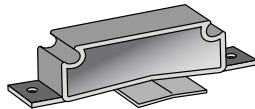
IT IS CRITICAL THAT ALL YAKIMA RACKS AND ACCESSORIES BE PROPERLY AND SECURELY ATTACHED TO YOUR VEHICLE. IMPROPER ATTACHMENT COULD RESULT IN AN AUTOMOBILE ACCIDENT, AND COULD CAUSE SERIOUS BODILY INJURY OR DEATH TO YOU OR TO OTHERS. YOU ARE RESPONSIBLE FOR SECURING THE RACKS AND ACCESSORIES TO YOUR CAR, CHECKING THE ATTACHMENTS PRIOR TO USE, AND PERIODICALLY INSPECTING THE PRODUCTS FOR ADJUSTMENT, WEAR, AND DAMAGE. THEREFORE, YOU MUST READ AND UNDERSTAND ALL OF THE INSTRUCTIONS AND CAUTIONS SUPPLIED WITH YOUR YAKIMA PRODUCT PRIOR TO INSTALLATION OR USE. IF YOU DO NOT UNDERSTAND ALL OF THE INSTRUCTIONS AND CAUTIONS, OR IF YOU HAVE NO MECHANICAL EXPERIENCE AND ARE NOT THOROUGHLY FAMILIAR WITH THE INSTALLATION PROCEDURES, YOU SHOULD HAVE THE PRODUCT INSTALLED BY A PROFESSIONAL INSTALLER SUCH AS A QUALIFIED GARAGE OR AUTO BODY SHOP.

- 1** Install Locking Brackets on opposite corners of basket:

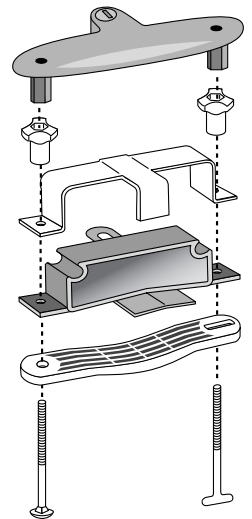
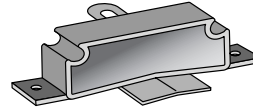


Follow steps 5-10 in your instructions but use the two *Locking Support Brackets* on opposite corners instead of 2 *non-Locking* support brackets supplied with Warrior basket.

Replace the support brackets,



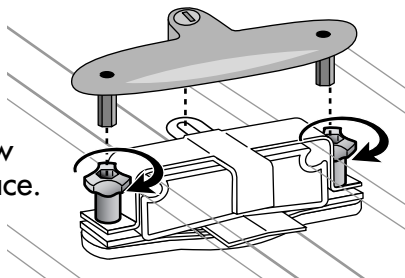
with **LOCKING** support brackets:



- 2** After tightening knobs in step 10, drop the Locking Bracket onto the hardware assembly as pictured.

Rotate knobs as necessary to allow the Locking Bracket to slip into place.

Lock with the key.



Lubricate the Lock with a non-water soluble lubricant.

