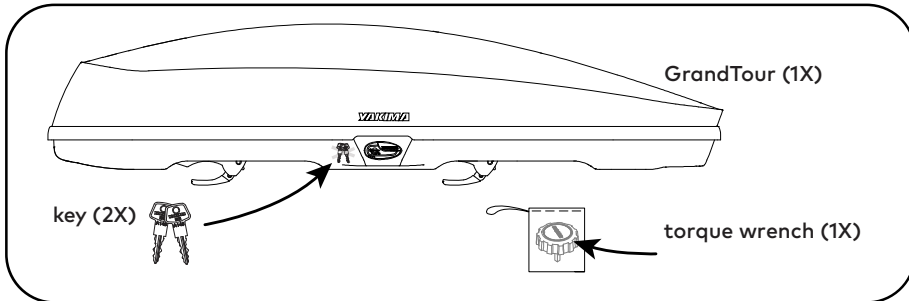


## CONTENTS



## CROSSBAR SPREAD

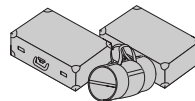
GrandTour 16 24-36"  
GrandTour 18 24-38"

## LOAD CAPACITY

box weight

rack weight

box contents



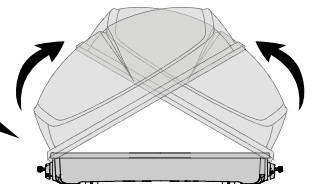
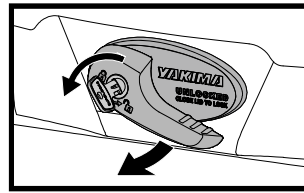
**Not more than 165 lbs. (75 kg)  
unless otherwise noted.**

GrandTour 16 = 51 lbs. (23.1 kg)  
GrandTour 18 = 58 lbs. (26.3 kg)

## INSTALLATION

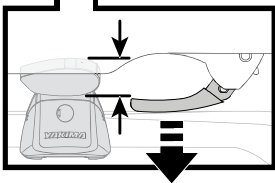
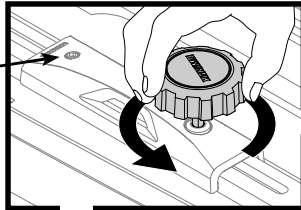
### 1 POSITION THE BOX ON YOUR CROSSBARS.

- Open the cargo box.
- The keys are taped to box. Remove them, insert a key, and turn it counter-clockwise.
- Rotate the handle and lift the lid to open the box—you will hear a “pop”.
- The lid will open both ways for ease of installation but the box should only be opened one side at a time.

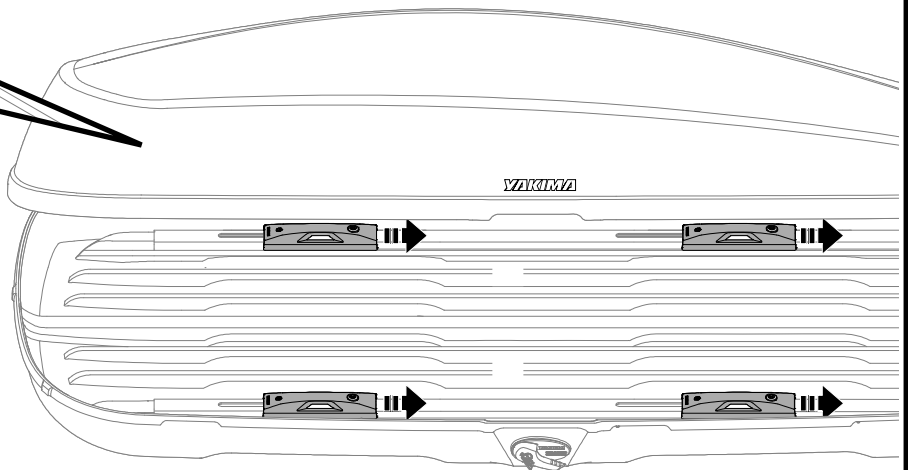


**NOTE:** The opposite side of the box must be fully closed (listen for a “click”) with the key removed in order to open the other side.

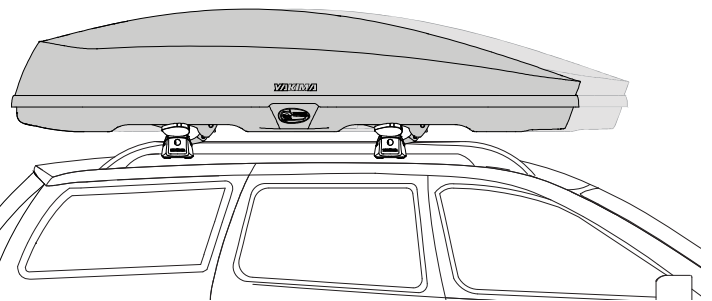
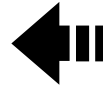
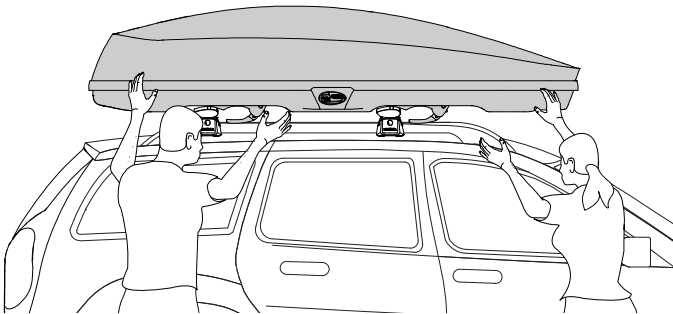
**Note:** This bolt is not related to installation.



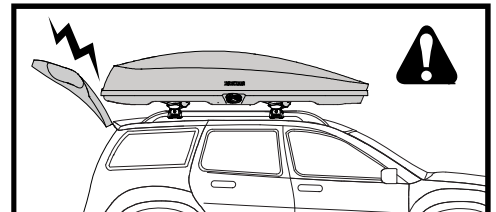
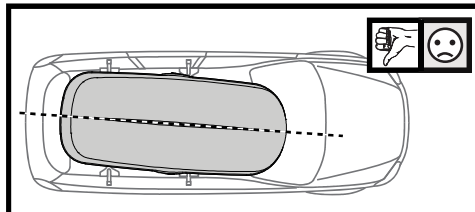
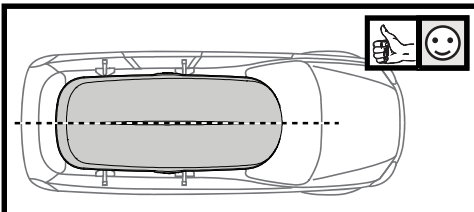
- Remove the wrench from the bag and loosen the bolt on each of the clamps until the clamps are open just enough to fit around your crossbar.
- Reach under the box to move the clamps and slide them all the way forward.
- Close the lid of the box.



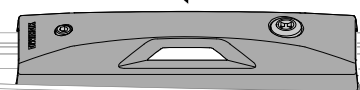
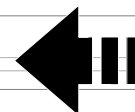
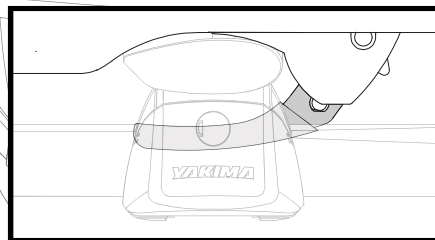
- With the assistance of a friend, lift the box onto your crossbars. Place the box so that the clamps are just a little forward of the crossbars.



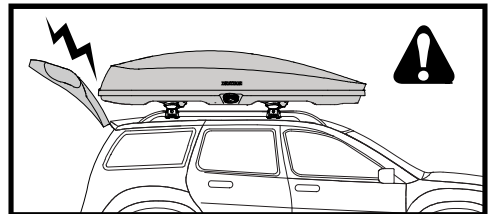
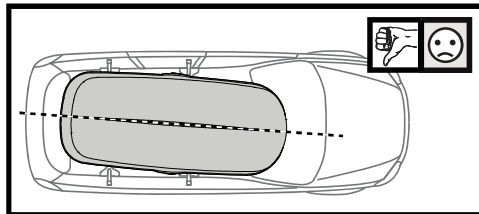
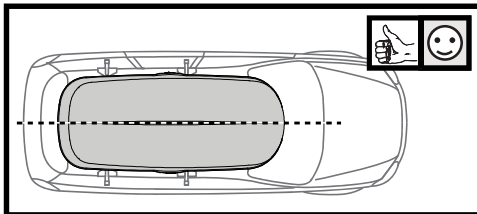
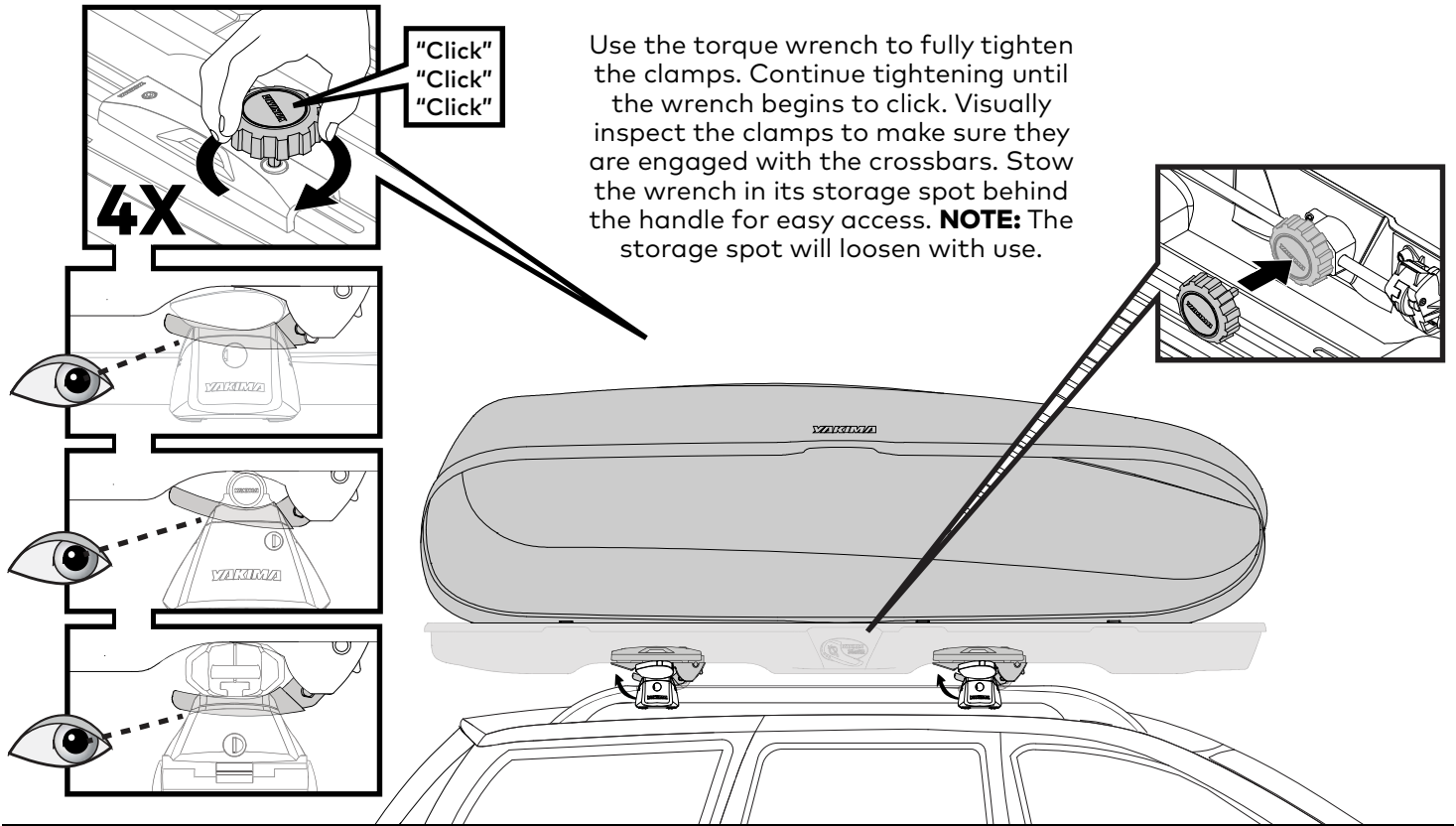
- Slide the box back so that the box is centered on your crossbars.
- Be sure the box is on straight and that your rear hatch does not interfere with its placement.



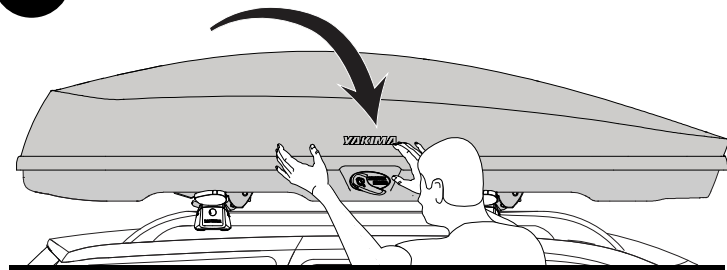
- Slide each clamp backward into position over your crossbars.
- Align the front clamps to each other, and the rear clamps to each other.



## 2 TIGHTEN THE CLAMPS.



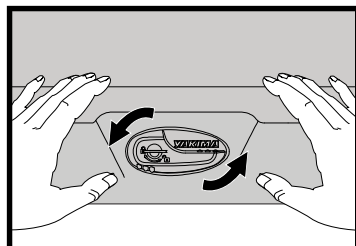
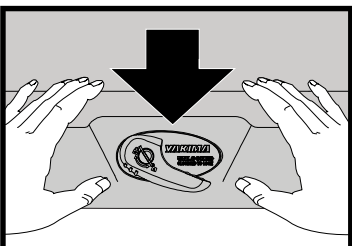
## 3 CLOSE THE BOX.



Push the lid down until the handle returns to a horizontal position and you hear a "click". The handle must return to the horizontal position to lock the box and remove key.

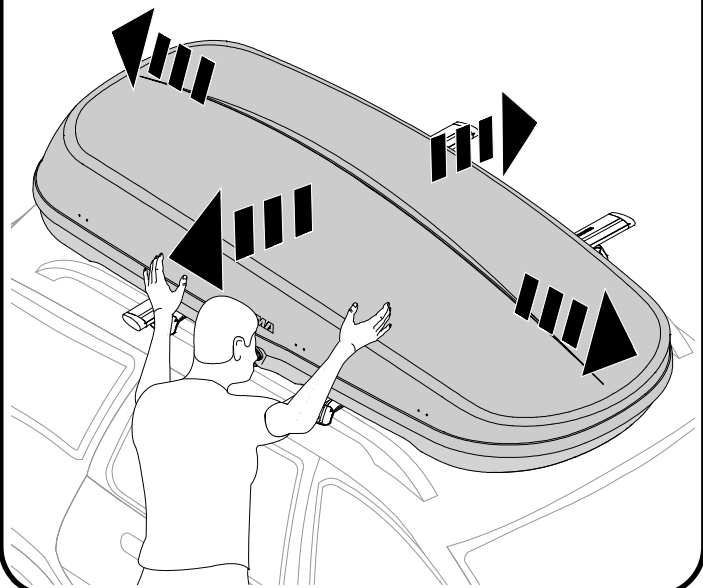
Verify closure by pushing up on lid at both ends.

**Note:** The key cannot be removed unless lid is fully closed.



## 4 TEST THE INSTALLATION.

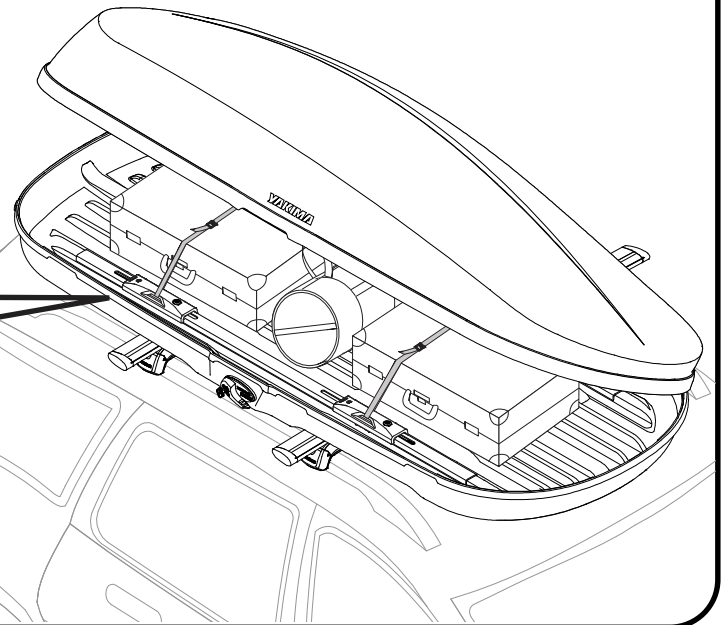
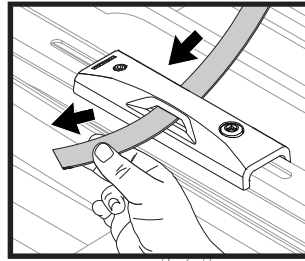
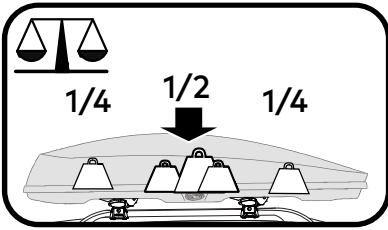
Test that the box is securely installed by tugging at it in all directions. The box should not slide on the crossbars. Repeat installation step 2 if necessary.



## LOADING

### 1 LOAD YOUR GEAR.

- Unlock and open the box.
- Load your gear.
- Position heavier items in the center of the box.
- Do not overfill the box.
- There are tie-down points on each of the clamps. Use straps (sold separately) for additional load security.

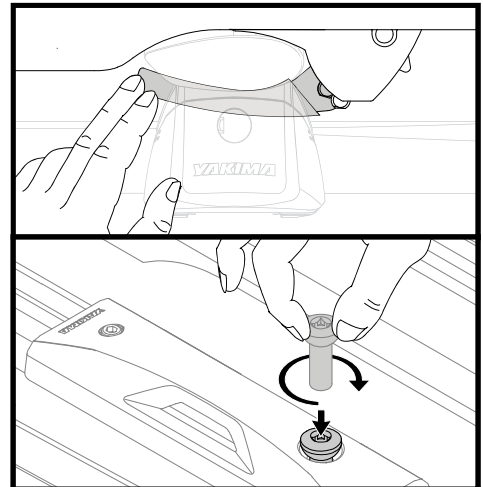
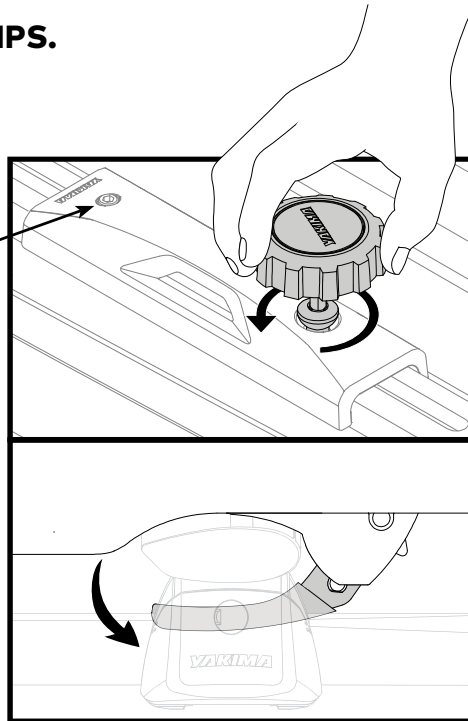


## REMOVAL

### 1 LOOSEN THE CLAMPS.

Note: This bolt is not related to installation.

First, unlock and unload the box. Then use the included wrench to loosen the clamps. Stop when the the clamp nut raises slightly and the clamp is fully open as shown. Do not remove the clamp nut.

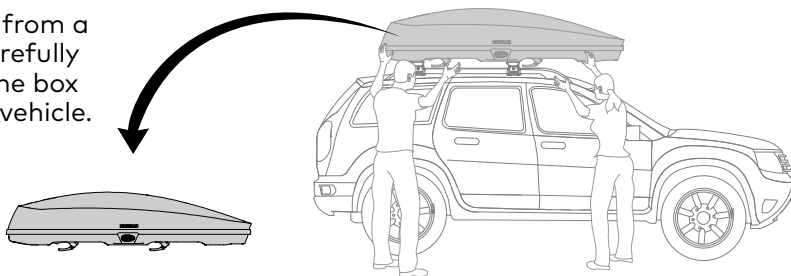


Note: If you accidentally remove the clamp nut, compress the clamp and thread the nut back onto the threaded post.

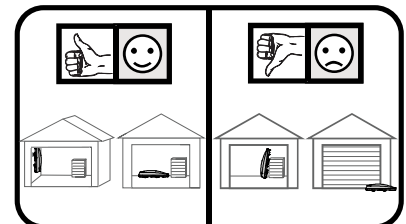
# 4X

### 2 REMOVE THE BOX.

With help from a friend, carefully remove the box from your vehicle.

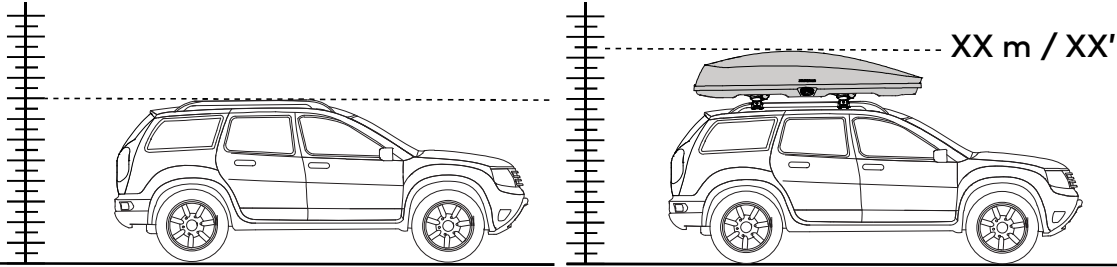


Store the box inside on a flat surface or hang the box by the clamps. Do not store the box by leaning it against a wall.





It is important to note the height of your vehicle with the GrandTour installed. Record the height here and be aware of this limitation when passing under low overhead clearance situations such as parking garages. Do not enter if your vehicle's total height is taller than the height listed.



Record Height

Hauteur avec la caisse  
Registro de altura



### IMPORTANT!

Be sure to read all the warnings and warranty information contained in the insert accompanying these instructions!

### READ THESE WARNINGS!

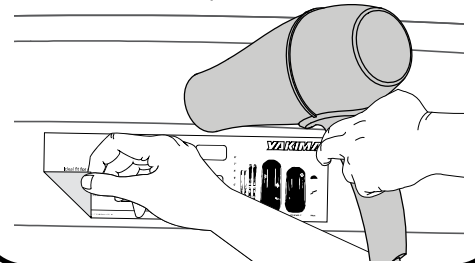
- Attachment hardware can loosen over time. Check and tighten if necessary, before each use.
- Be sure all hardware is secured according to instructions. Failure to perform safety checks before driving away can result in property damage, personal injury, or death.

### CARE AND MAINTENANCE

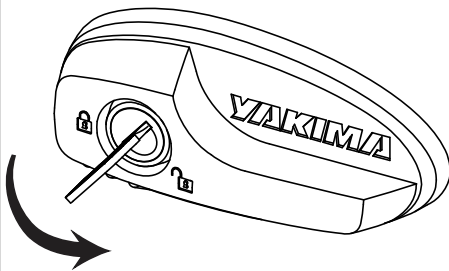
**YAKIMA cargo boxes should be cared for and maintained.**

- To clean, use only mild detergents. Harsh detergents could damage the cargo box surface.
- Protect your cargo box from extreme temperatures, (heat or cold) during prolonged storage.
- Remove cargo box before entering an automatic car wash.
- Hardware such as locks should be lubricated with graphite or other dry-lubricants.

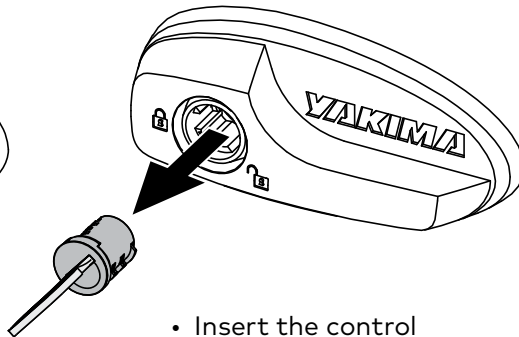
**TIP:** Use a hair dryer to warm up the point of purchase sticker and remove it. Dispose of the sticker.



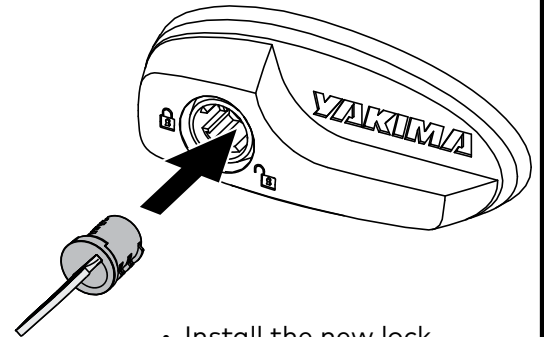
### TO REPLACE SKS LOCK CORE



- Close the box.
- Insert key, turn it 45° counter-clockwise, then remove the key.



- Insert the control key and remove the core along with the control key.



- Install the new lock core. Follow the instructions that came with your lock core purchase.

**AVAILABLE ACCESSORIES:** Yakima SKS™ Lock Cores with Keys. SKS stands for Same Key System™. These lock cores enable you to lock all of your Yakima products with just one key.

2-Pack SKS™ Locks  
#8007202



4-Pack SKS™ Locks  
#8007204

