

## CONTENTS

security wrench (1x)



wrench (1x)



clips (4x)



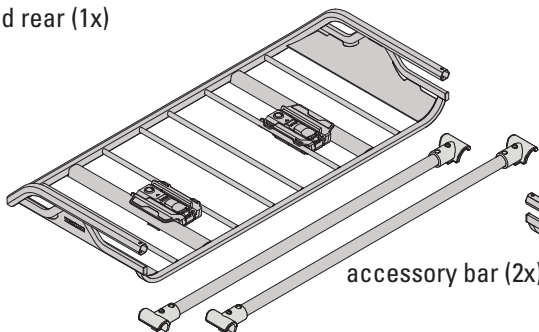
end clips (2x)



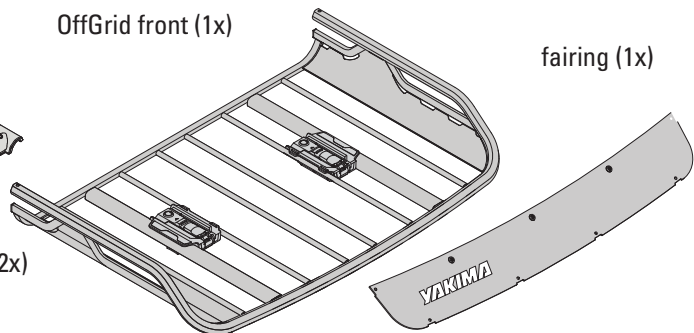
plugs (6x)



OffGrid rear (1x)

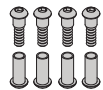


OffGrid front (1x)

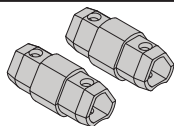


fairing (1x)

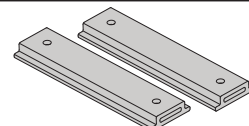
bolts (4x)



coupler (2x)



insert (2x)



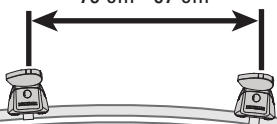
screw (4x)



## CROSSBAR SPREAD

OffGrid Large

30" - 38"  
76 cm - 97 cm



OffGrid Medium

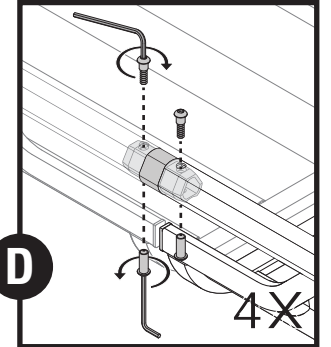
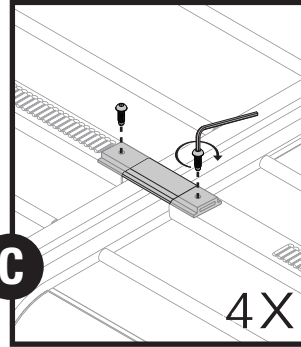
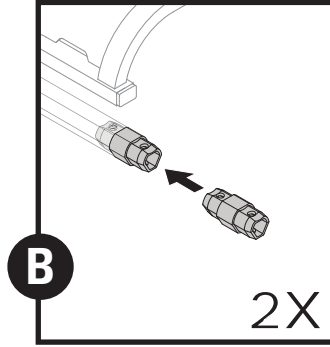
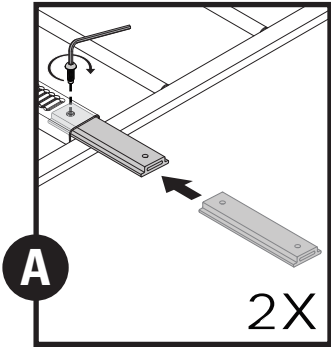
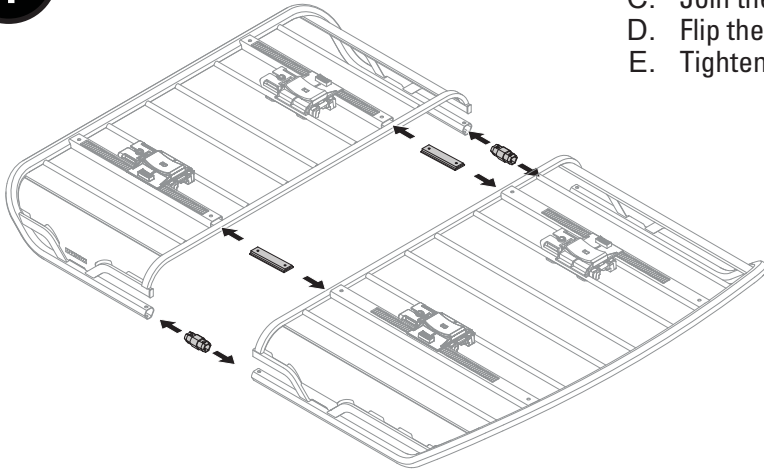
24" - 32"  
61 cm - 81 cm



# ASSEMBLY

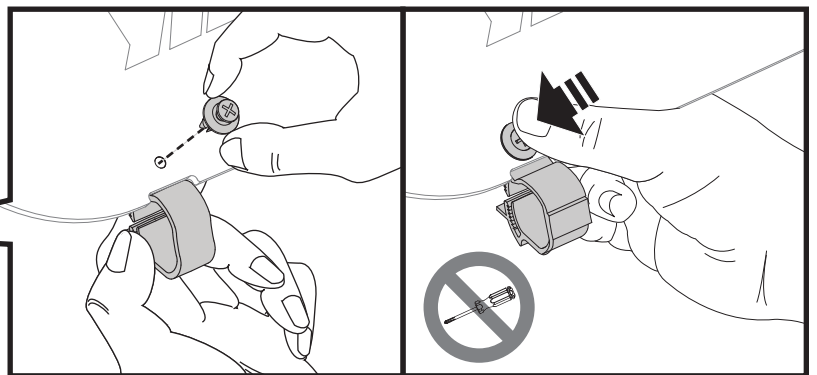
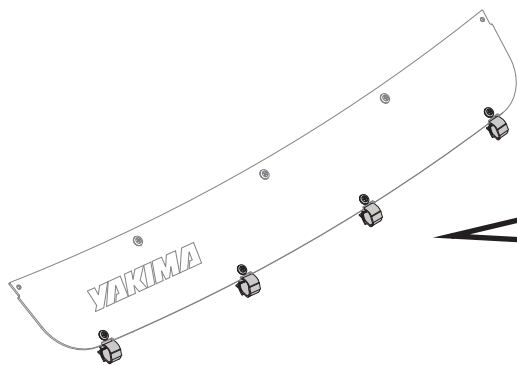
1

- A. Install both inserts on one side.
- B. Insert both couplers on one side.
- C. Join the other side, and install the inserts.
- D. Flip the basket right side up then install the coupler hardware.
- E. Tighten all hardware fully to 31 in-lb (3.5Nm).



2

Fairing installation is recommended to reduce wind noise. Before installation remove the protective film from the fairing. You can remove fairing for carrying longer loads inside the basket. Being sure to orient the tabs as shown, attach the clips to the back of the fairing. Press the plugs through the fairing, and into the clips.



**IMPORTANT!**

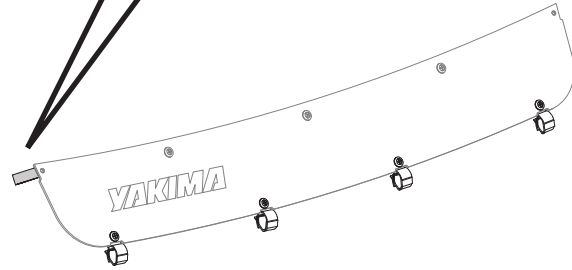
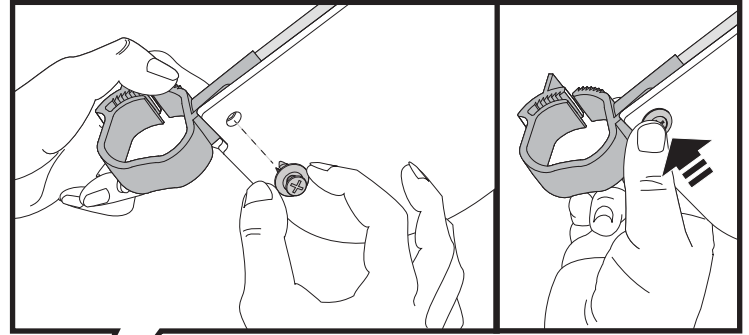
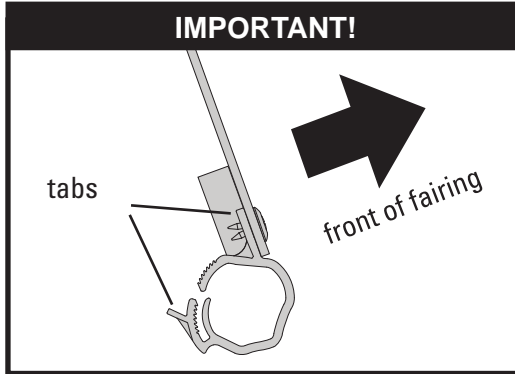
tabs  
languettes  
lengüetas

front of fairing

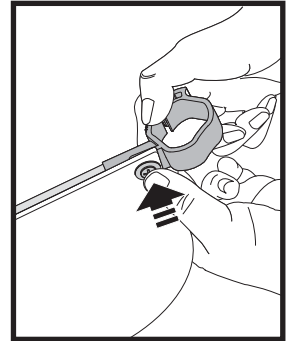
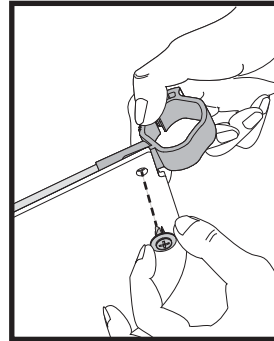
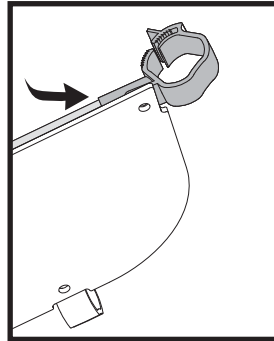
4X

3

Press the preinstalled rod into an end clip, and install it using a plug.

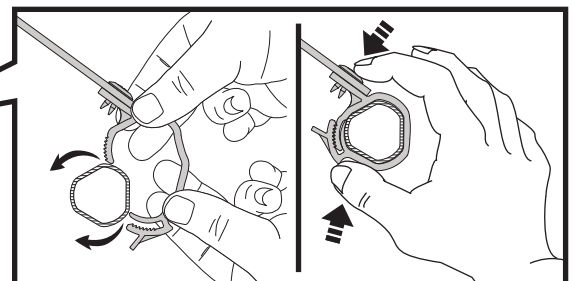
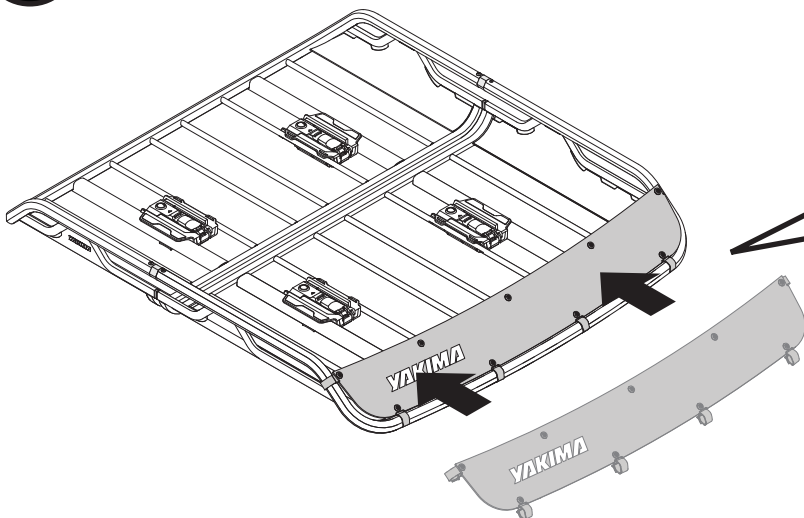


Flex the fairing enough to install the rod in the other end clip. Then install the last plug.



4

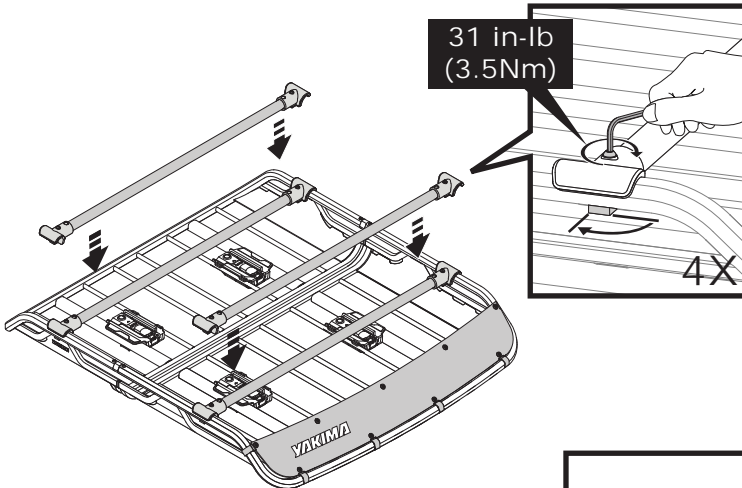
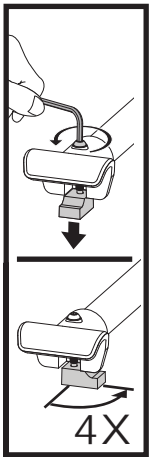
Flex the fairing clips around the bar. Squeeze the clips to secure them to the bar.



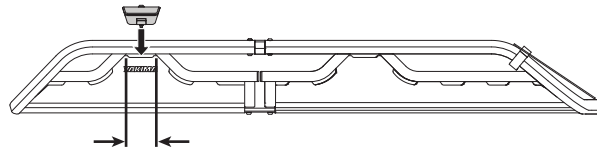
6X

5

Accessory bar usage is optional. To install them unscrew the bolts and rotate the clamp blocks 90°. Put the accessory bar in your desired position, and rotate the clamp block back. Then tighten fully to 31 in-lb (3.5Nm).



**IMPORTANT!** If you intend to use the accessory bars to install a bike rack or boat carrier, the rear most accessory bar must be installed within this window!

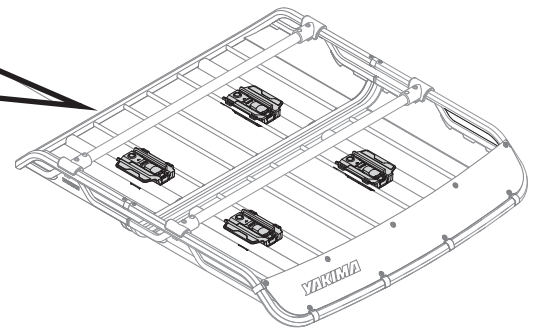
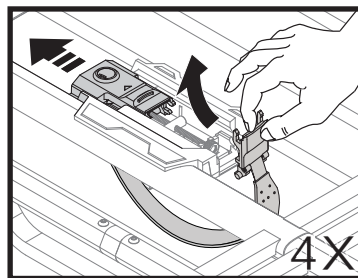


## INSTALLATION

1

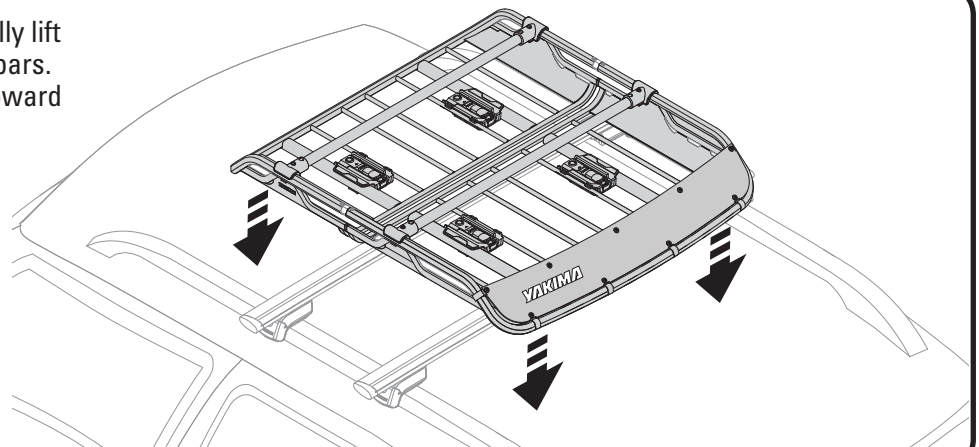
Slide back the cover and release the lever.

Note: For a wider base move the clamps. See page 6 for details.



2

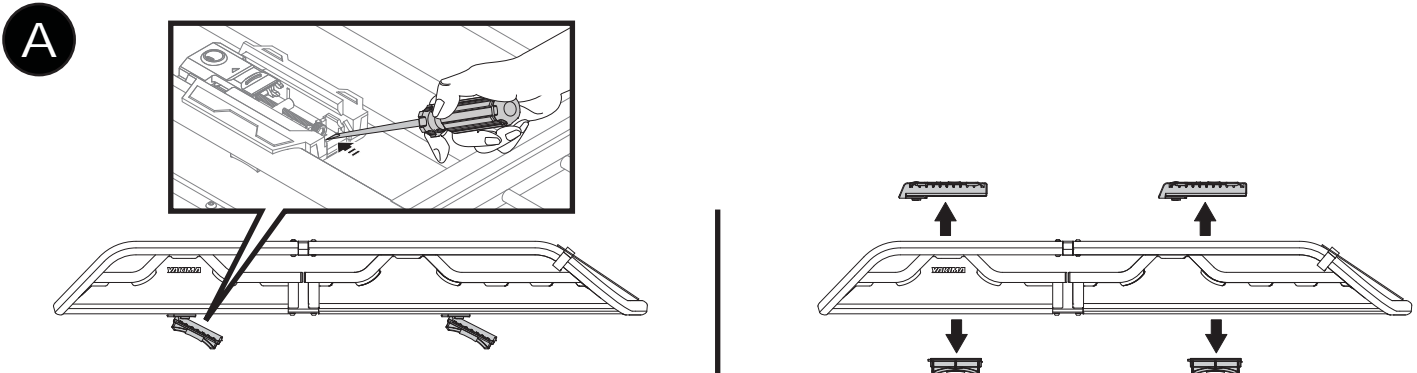
Have a friend help you carefully lift your OffGrid onto your crossbars. Be sure to orient the fairing toward the front of the vehicle.





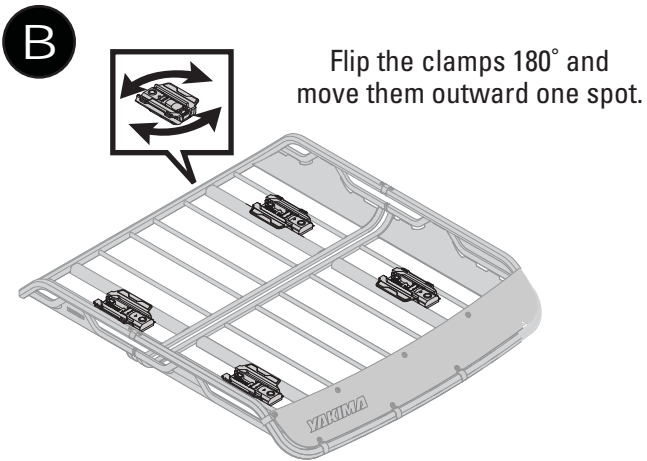
# Optional

Depending upon the load you may want a wider base for improved stability. To achieve this flip the clamps, and move them outward.

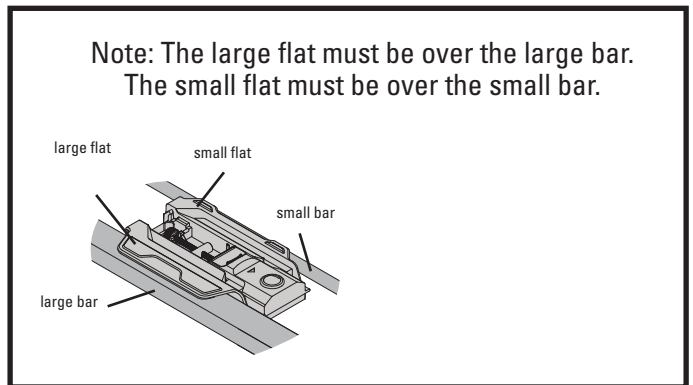


With the clamps open use a screwdriver as shown to push in diagonally to release the top and bottoms halves of the clamp.

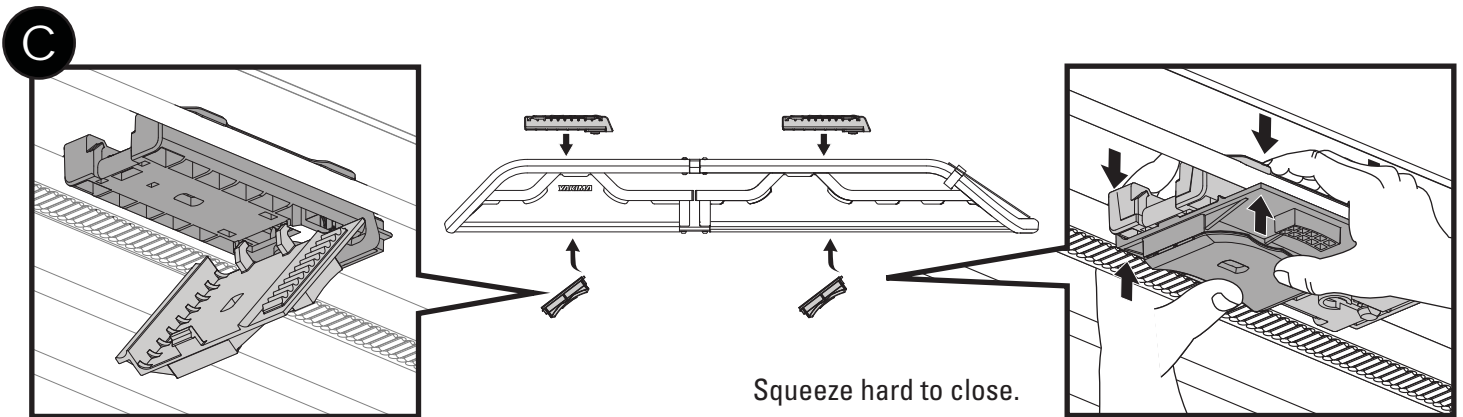
4X



Flip the clamps 180° and move them outward one spot.



4X



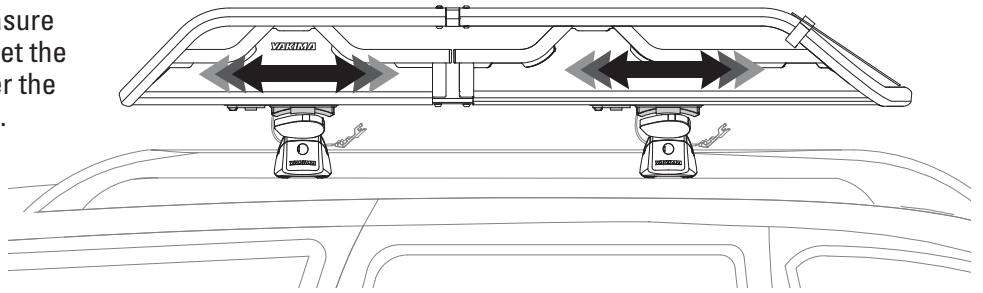
Engage the hooks.

Squeeze hard to close.

4X

3

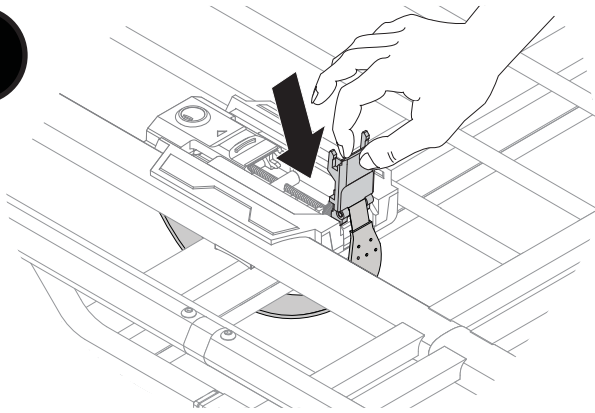
When the clamps are open their position can be adjusted. Measure between your crossbars then set the clamps to that distance. Center the clamps on your crossbars.



Do not move Q-Tower or BaseLine towers.

4X

4

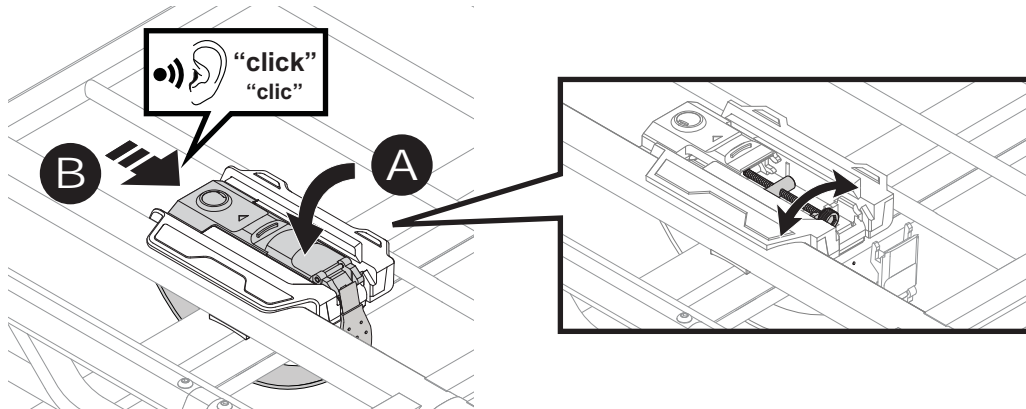


Route the straps under and around the crossbars. With the straps in place under the front crossbar, hook the tabs back into the detents.

4X

5

**Adjust strap tension and close the levers.** Strap tension can be adjusted by turning the thumbwheel in both directions. Adjust the strap tension with the thumbwheel so the strap is tight around the crossbar when the lever is closed.



4X

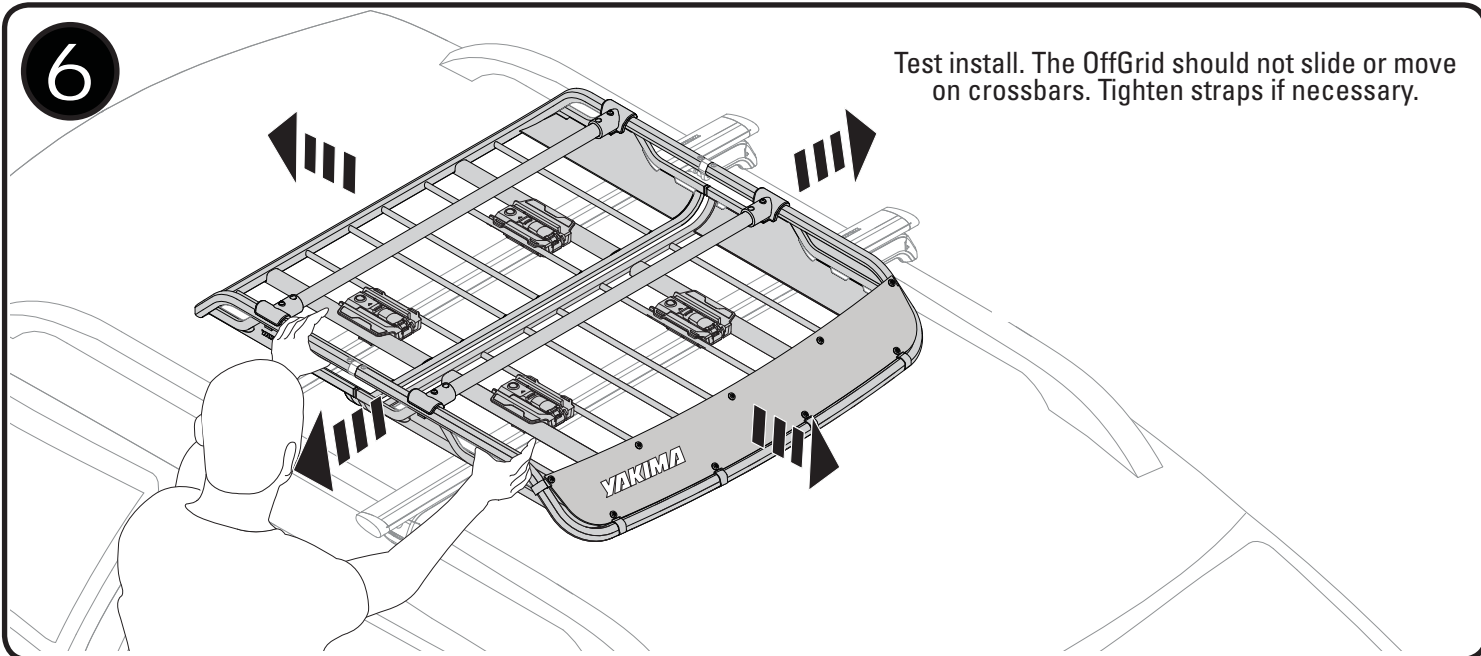


If you have purchased SKS Lock Cores, install them according to the SKS instructions.

Yakima #8007204

6

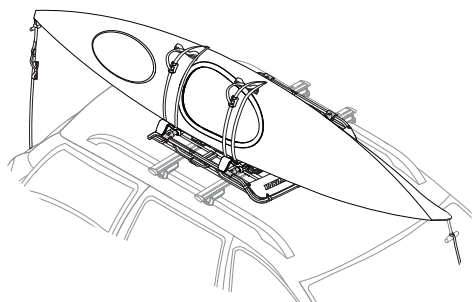
Test install. The OffGrid should not slide or move on crossbars. Tighten straps if necessary.



## LOADING

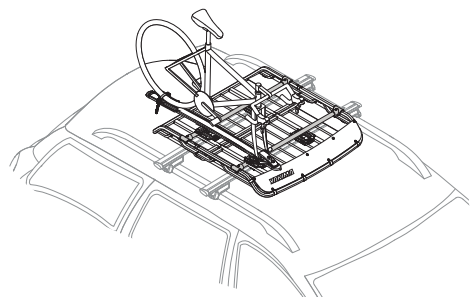
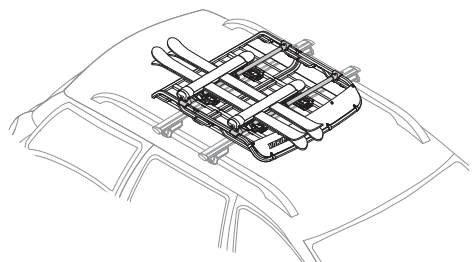


Not compatible with cargo boxes or rooftop tents.

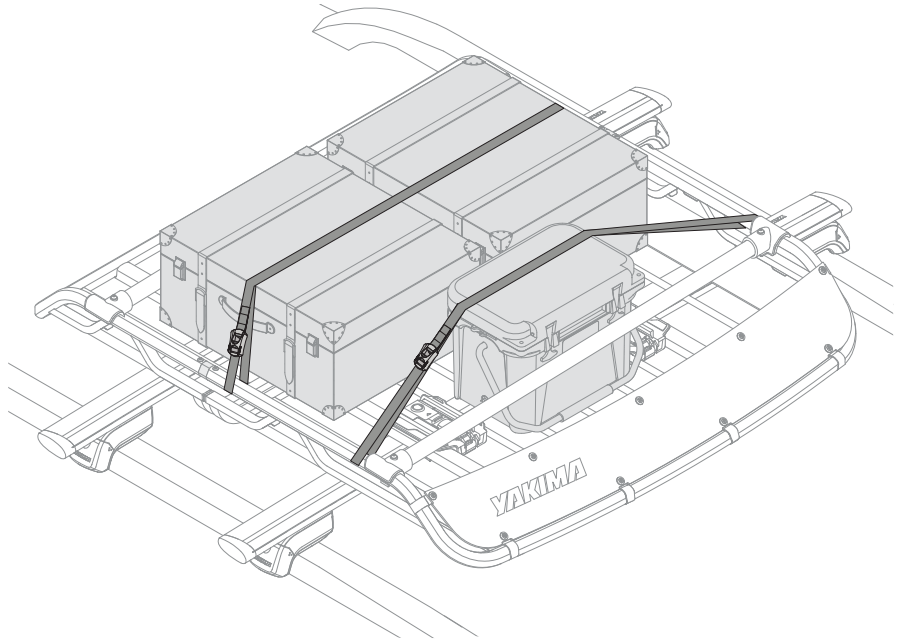


With an accessory crossbar spread of 24–29" (61cm–74cm), you may carry bikes, skis, or kayaks, provided you do not exceed the recommended weight limit for your vehicle.

- If you have an accessory crossbar spread of over 30" (76cm) or more, you may also carry a canoe.
- To determine the crossbar spread on your rack, measure center to center for accessory bars.



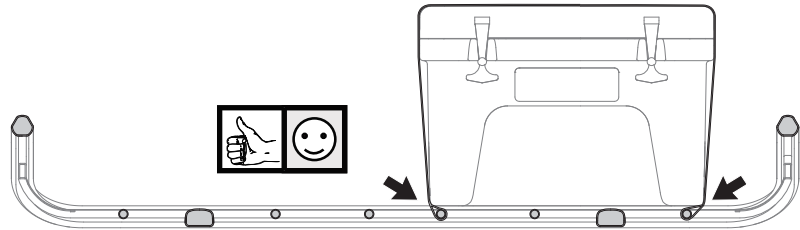
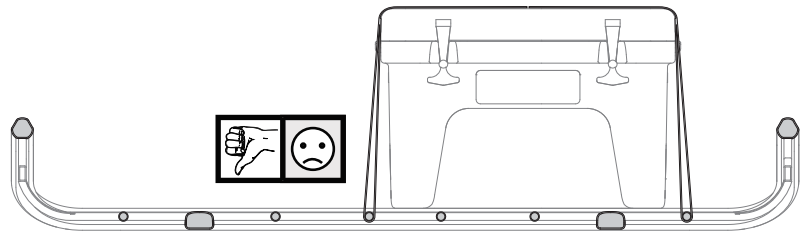
Carry gear in the basket, and attach accessories directly to the accessory bars (using accessory instructions).



Always securely tie-down your load (tie-down straps not included).



**CAUTION:** When tying to the small tubes always route the strap under the load as shown.



## REMOVAL

1. Slide the the covers back, open and disengage the front levers, loosen the thumbwheel as necessary.
2. Lift the OffGrid off of the crossbars and store it in a safe place.

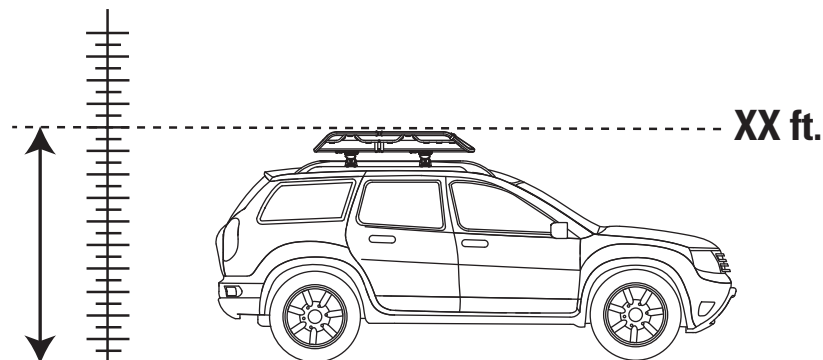
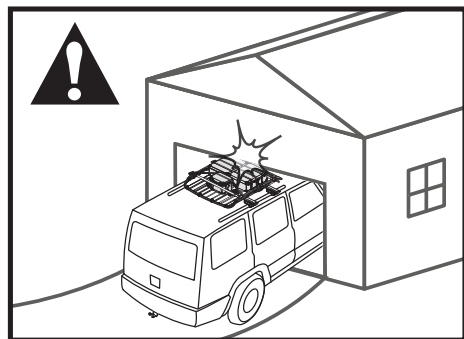
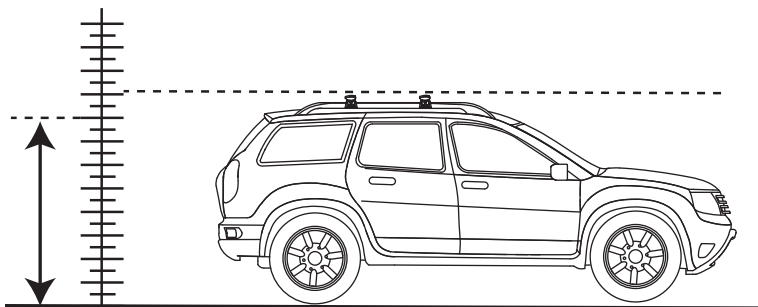
## MAINTENANCE

Use non-water soluble lubricant on screws. Use a soft cloth with water and mild detergent to clean plastic parts.

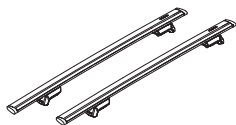
## WARNING



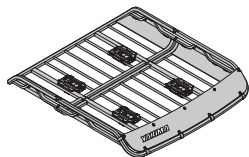
Be sure all hardware is secured according to instructions. Attachment hardware can loosen over time. Check before each use, and tighten if necessary.



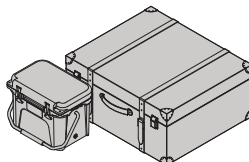
## WEIGHT LIMITS



Rack



OffGrid  
Medium: 38 lbs. (17.2 kg)  
Large: 50 lbs. (22.7 kg)



Load



Not more than 165 lbs. (75 kg) unless otherwise noted.

KEEP THESE INSTRUCTIONS!



## IMPORTANT WARNINGS

### Rack Installation

Inadequately secured loads and incorrectly mounted roof racks and accessory racks can come loose during travel and cause serious accidents! Therefore, installation, handling and use must be carried out in accordance with product and vehicle instructions.

In addition to these instructions, review the mounting instructions for the roof rack and the operating instructions of the vehicle.

These instructions should be kept together with the vehicle's operating instructions and carried in the vehicle when in use and en route.

For your own safety, you should only use roof racks that are authorized for use with your vehicle.

For roof racks that do not specify the distance between the front and rear crossbars, the distance shall be at least 700 mm or as large as possible. Please note that changes (e.g. additional drill holes) to the accessory rack's attachment system are not permissible.

Check attachment hardware and load for tight fit and function:

- Before the start of any journey.
- After driving a short distance following rack or load install.
- At regular intervals on longer journeys.
- More frequently on rough terrain.
- After interruption of a journey during which the vehicle was left unsupervised (check for damage due to outside intervention).

### Rack Loading

Do not exceed the maximum load specified for the roof rack, accessory rack or the maximum load recommended by the vehicle manufacturer.

**Max Roof Load = weight of roof rack + weight of accessory racks + weight of load.**

Load shall be uniformly distributed with the lowest possible center of gravity.

Load should not substantially extend beyond the loading surface of the roof rack.

### Boat Loading and Longer Loads

Use all provided straps to secure the boat in accordance with the instructions. Bow and stern tiedown lines must be used!

### Vehicle Driving and Regulations

The speed driven must be suited to the load transported and to official speed limits. In the absence of any speed limits, we recommend a maximum speed of 80 mph (130 km/h).

When transporting any load, the speed of the vehicle must take into account all conditions such as the state of the road, the surface of the road, traffic conditions, wind, etc. Vehicle handling, cornering, braking and sensitivity to side winds will change with the addition of roof top loads.

Off-road driving is not permitted and could result in damage to your vehicle or your gear.

### Maintenance

The accessory rack should be carefully cleaned and maintained, particularly during the winter months. Use only a solution of water and standard car wash liquid without any alcohol, bleach or ammonium additives.

For reasons of fuel economy and the safety of other road users, the accessory rack and roof rack should be removed when not in use.

Periodically inspect accessory rack for damage. Replace lost, damaged or worn parts. Use only original spare parts obtained from a stocking specialist, dealer or manufacturer.

Any changes made to the roof racks and accessory racks as well as the use of spare parts or accessories other than those supplied by the manufacturer will lead to the lapsing of the manufacturer's warranty and liability for any material damage or accidents. You should observe these instructions to the letter and only use the original parts supplied.

