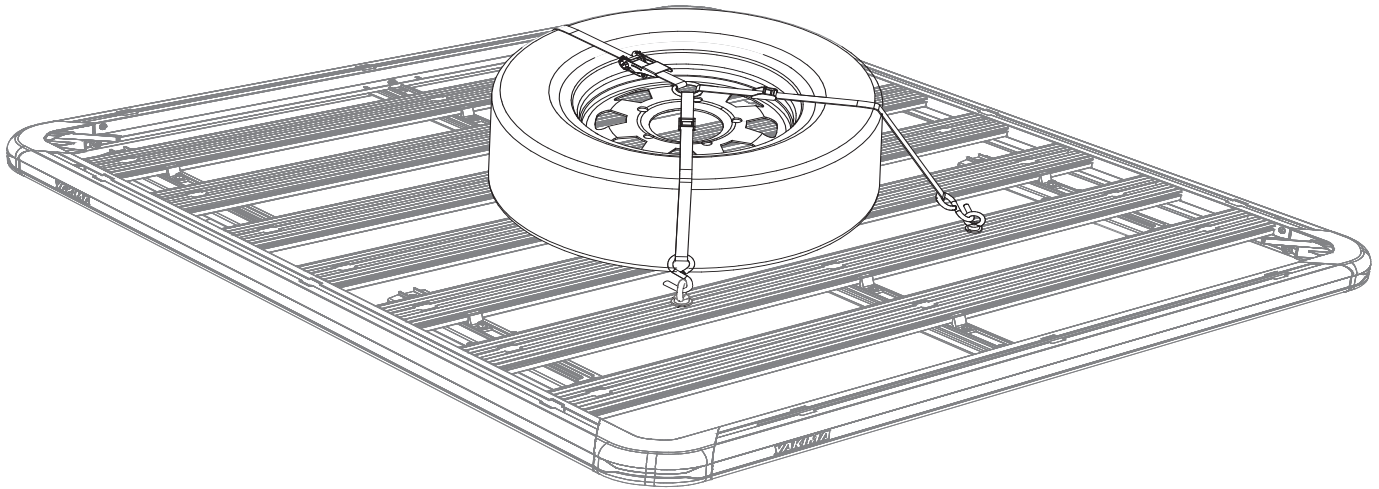
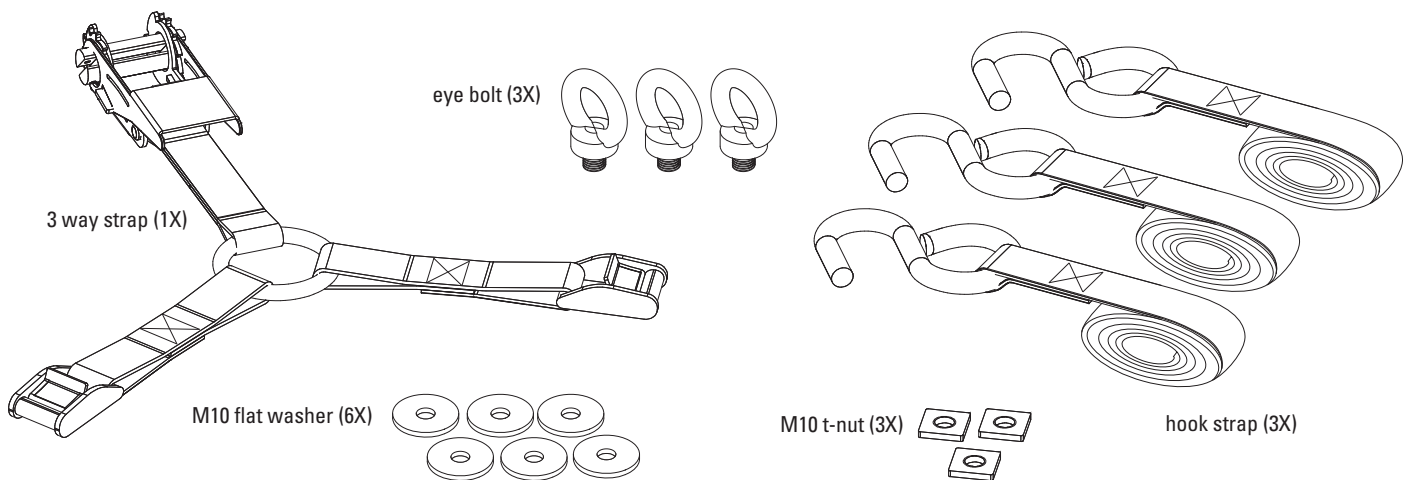


# Spare Wheel Holder



## CONTENTS



## LOAD CAPACITY

Up to 42" tire size with max weight of 100 lbs (45.4 kg)

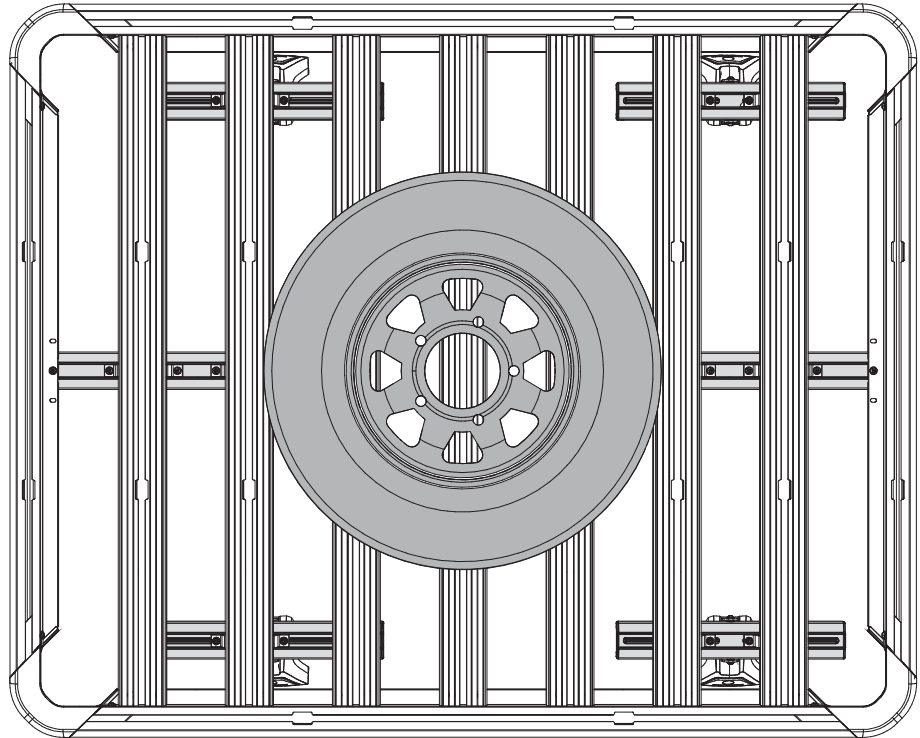
## INSTALLATION

- Please read instructions carefully before installation.
- Check the contents of kit. Contact your YAKIMA dealer if any parts appear missing or damaged.
- Clean your platform prior to fitting the LockNLoad Spare Wheel Holder.
- Place these instructions in the vehicle's glove box after installation is complete.

### 1 LOAD TIRE.

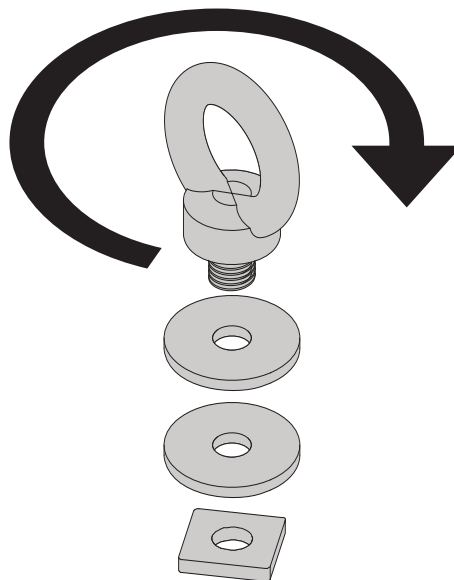
Load the spare wheel onto the Platform. Center the spare wheel on the Platform for optimal load distribution.

**NOTE:** Top view of LockNLoad Platform B shown.



### 2 ASSEMBLE THE EYE BOLTS.

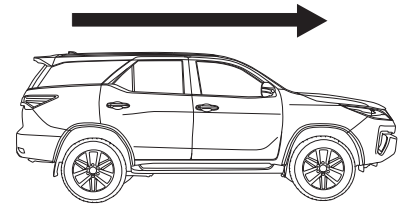
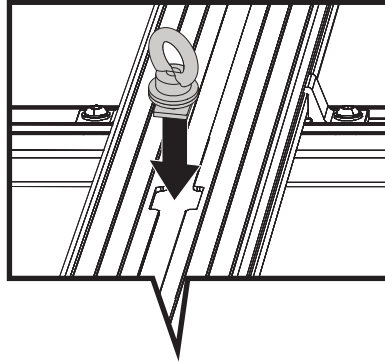
Loosely thread two M10 washers and an M10 nut plate onto each eyebolt.



**3X**

### 3 POSITION AND SECURE EYE BOLTS.

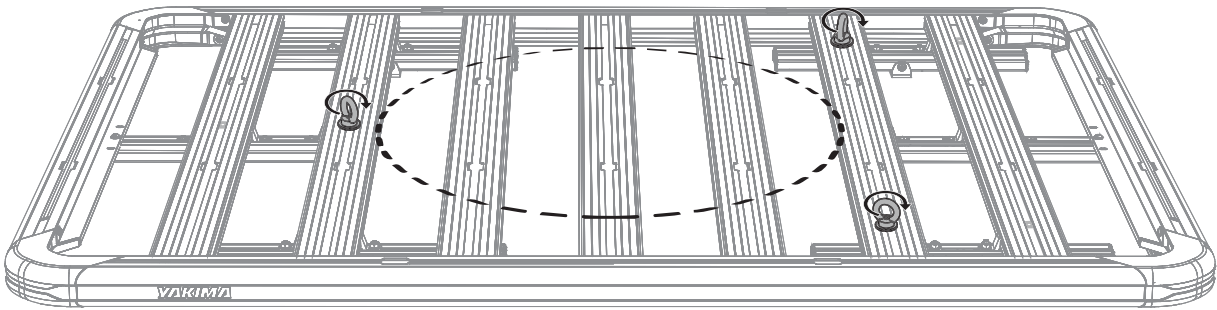
Drop two eye bolt assemblies into the slot cut outs in front of the spare wheel and one eye bolt assembly into the slot behind the spare wheel. Slide them into place along the channels as shown. Tighten to 10 Nm.



Front of Vehicle



**Do not over tighten!**

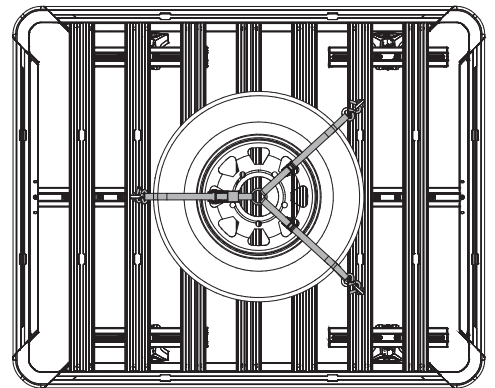


**3X**

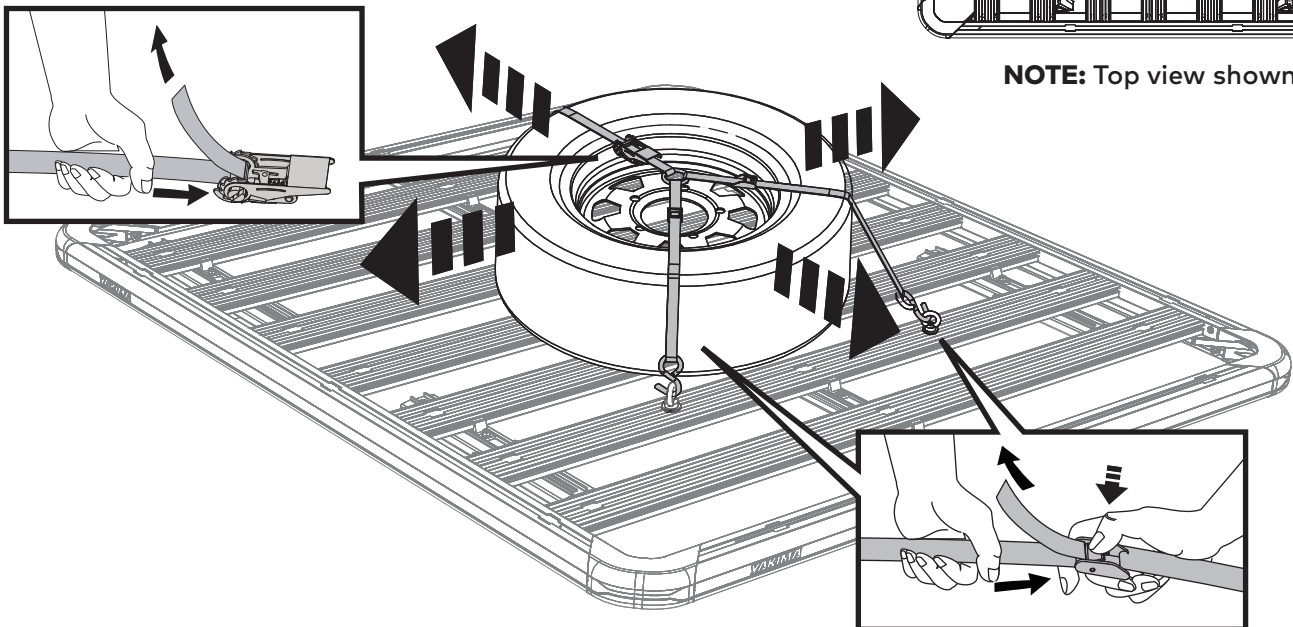
### 4 SECURE STRAPS.

Hook straps onto the eye bolts and fasten the free ends to the cam buckles and ratchet.

Ensure the ring is in the center of the wheel. Tighten using the ratchet on the 3 way strap. Test that the wheel is secure by rocking it back and forth, retighten as necessary. Secure strap loose ends.



**NOTE:** Top view shown.



## IMPORTANT WARNINGS

### Rack Installation

Inadequately secured loads and incorrectly mounted roof racks and accessory racks can come loose during travel and cause serious accidents! Therefore, installation, handling and use must be carried out in accordance with product and vehicle instructions.

In addition to these instructions, review the mounting instructions for the roof rack and the operating instructions of the vehicle.

These instructions should be kept together with the vehicle's operating instructions and carried in the vehicle when in use and en route.

For your own safety, you should only use roof racks that are authorized for use with your vehicle.

For roof racks that do not specify the distance between the front and rear crossbars, the distance shall be at least 700 mm or as large as possible. Please note that changes (e.g. additional drill holes) to the accessory rack's attachment system are not permissible.

Check attachment hardware and load for tight fit and function:

- Before the start of any journey.
- After driving a short distance following rack or load install.
- At regular intervals on longer journeys.
- More frequently on rough terrain.
- After interruption of a journey during which the vehicle was left unsupervised (check for damage due to outside intervention).

### Rack Loading

Do not exceed the maximum load specified for the roof rack, accessory rack or the maximum load recommended by the vehicle manufacturer.

Max Roof Load = weight of roof rack + weight of accessory racks + weight of load.

Load shall be uniformly distributed with the lowest possible center of gravity.

Load should not substantially extend beyond the loading surface of the roof rack.

### Vehicle Driving and Regulations

The speed driven must be suited to the load transported and to official speed limits. In the absence of any speed limits, we recommend a maximum speed of 80 mph (130 km/h).

When transporting any load, the speed of the vehicle must take into account all conditions such as the state of the road, the surface of the road, traffic conditions, wind, etc. Vehicle handling, cornering, braking and sensitivity to side winds will change with the addition of roof top loads.

If this product is off-road certified, it is designed and intended to be used on forest service roads, access roads or other non-technical terrains at moderate speeds. It is not to be used while rock-crawling, jumping, bogging, or other technical off-road terrains. When using off-road certified products with non-off-road certified products, always follow the warnings and restrictions stated in the non-off-road certified product instructions.

### Maintenance

The accessory rack should be carefully cleaned and maintained, particularly during the winter months. Use only a solution of water and standard car wash liquid without any alcohol, bleach or ammonium additives.

For reasons of fuel economy and the safety of other road users, the accessory rack and roof rack should be removed when not in use.

Periodically inspect accessory rack for damage. Replace lost, damaged or worn parts. Use only original spare parts obtained from a stocking specialist, dealer or manufacturer.

Any changes made to the roof racks and accessory racks as well as the use of spare parts or accessories other than those supplied by the manufacturer will lead to the lapsing of the manufacturer's warranty and liability for any material damage or accidents. You should observe these instructions to the letter and only use the original parts supplied.

In order to replace any lost or defective keys, note the lock and