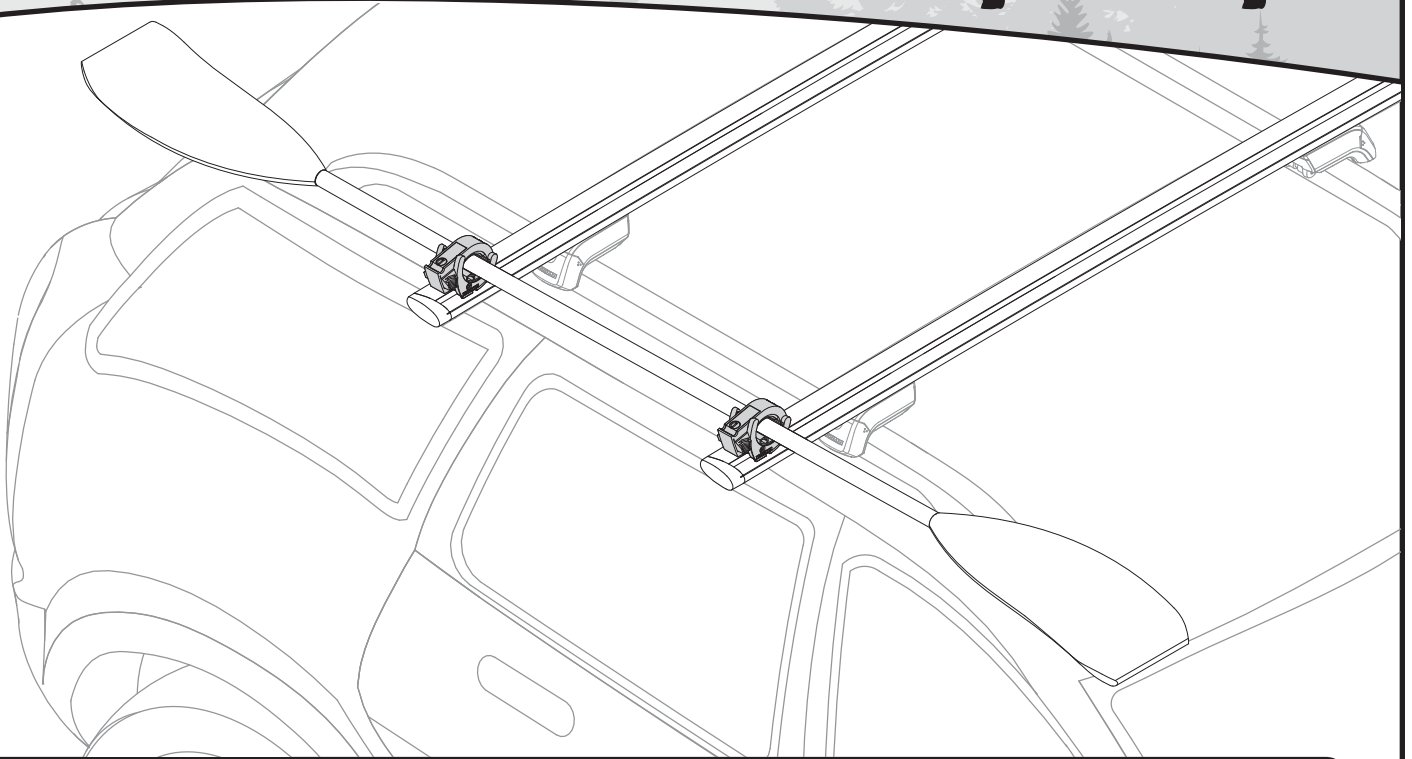


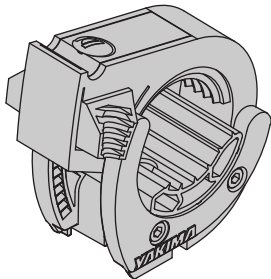
YAKIMA®

TopGrip



KIT CONTENTS

TopGrip (2X)



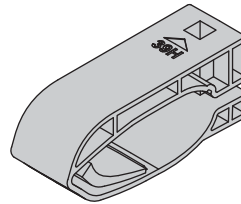
M6 x 18mm bolt (2X)



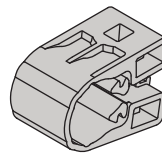
M6 x 55mm bolt (2X)



CoreBar adapter (2X)



RoundBar/square adapter (2X)



A-plate (2X)



M6 toothed washer (2X)



M6 nut (2X)



M6 washer (2X)



4mm hex wrench (1X)

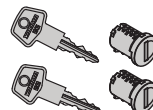


Gear capacity



One paddle up to 1.2-2" (30-50mm) in diameter.
Max load rating: 9 pounds (4kg).

Available accessories



2-Pack SKS Locks

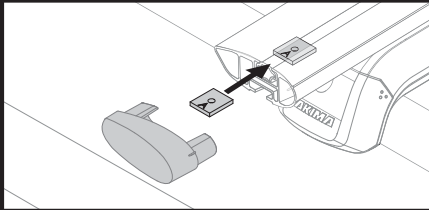
#8007202

INSTALLATION

1

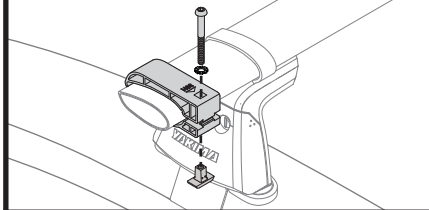
Identify crossbar type.

JetStream / other t-slot crossbars



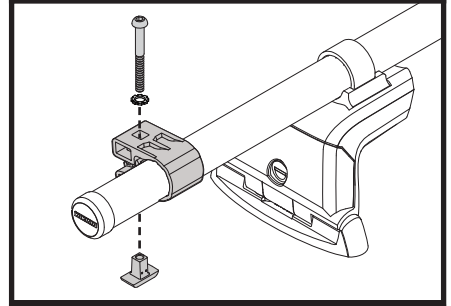
Go to step 2 →

CoreBar



Go to step 3 →

RoundBar

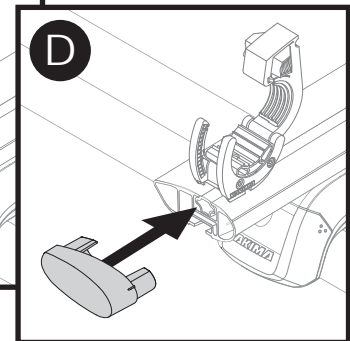
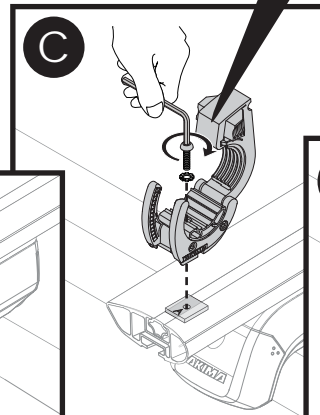
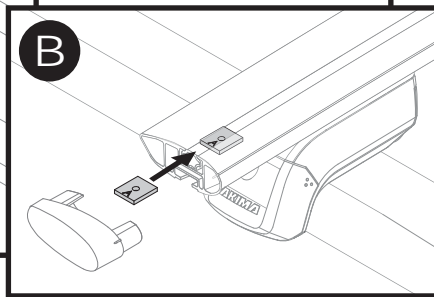
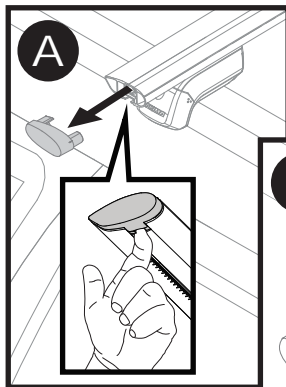


Go to step 4 →

2

Install TopGrip on JetStream bars.

- A. Remove the endcap.
- B. Depress the rubber and insert the A-plate.
- C. Open and loosely attach TopGrip with the M6 x 18mm bolt and M6 toothed washer (for shallow t-slot crossbars use the M6 flat washer with M6 toothed washer). Align each TopGrip and fully tighten them to 3Nm (2.2 Ft Lbs).
- D. Replace the endcap.
- E. Proceed to the loading section.



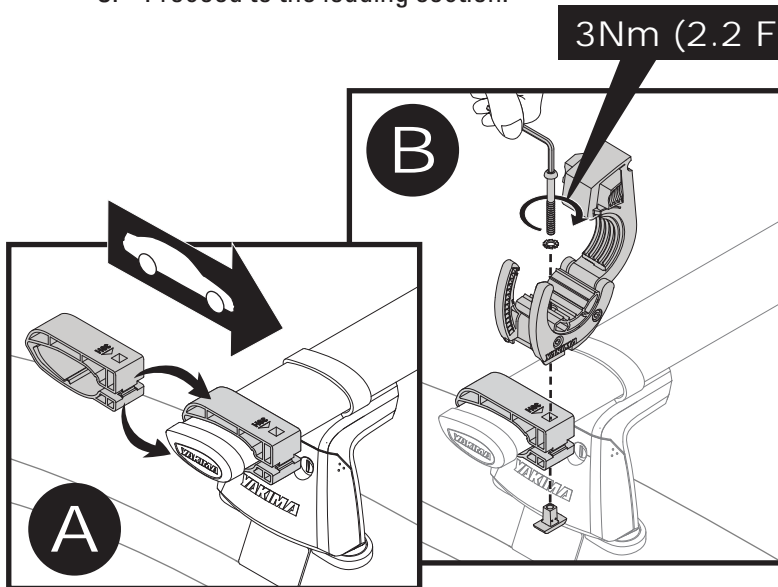
3Nm (2.2 Ft Lbs)

2X

3

Install TopGrip on CoreBars.

- Install the CoreBar adapter around the crossbar.
- Open and loosely attach TopGrip with the M6 x 55mm bolt, M6 toothed washer, and M6 nut as shown. Align each TopGrip and fully tighten them to 3Nm (2.2 Ft Lbs).
- Proceed to the loading section.

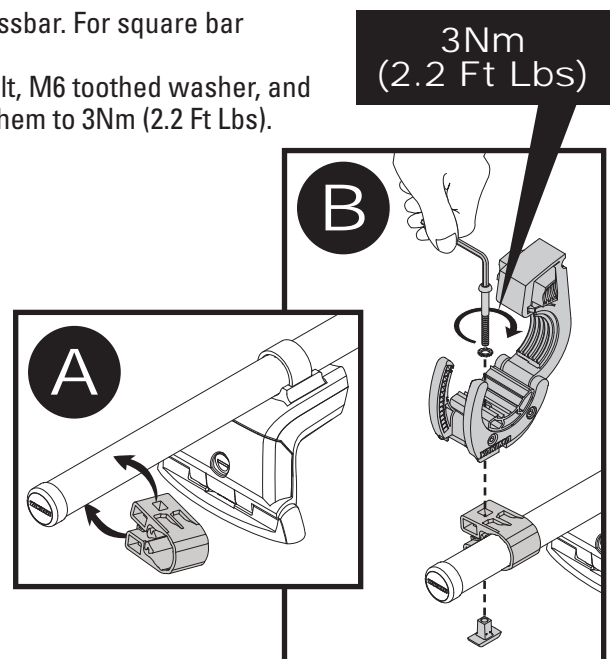


2X

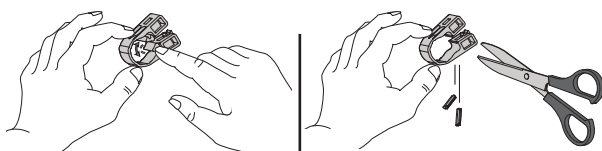
4

Install TopGrip on RoundBars or square bars.

- Install the RoundBar/square bar adapter around the crossbar. For square bar remove the tabs first.
- Open and loosely attach TopGrip with the M6 x 55mm bolt, M6 toothed washer, and M6 nut as shown. Align each TopGrip and fully tighten them to 3Nm (2.2 Ft Lbs).
- Proceed to the loading section.



SquareBar only



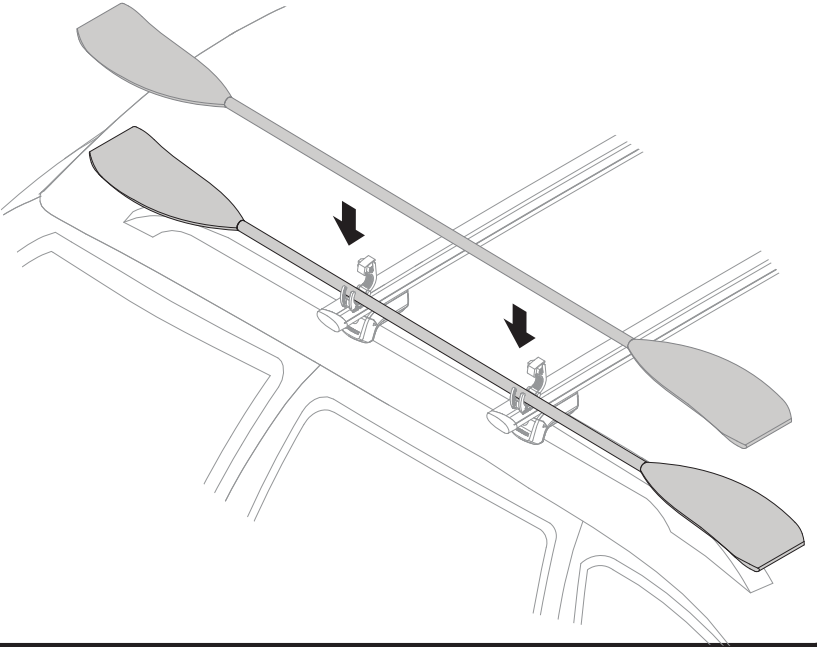
Loosen and cut out tabs.

2X

LOADING

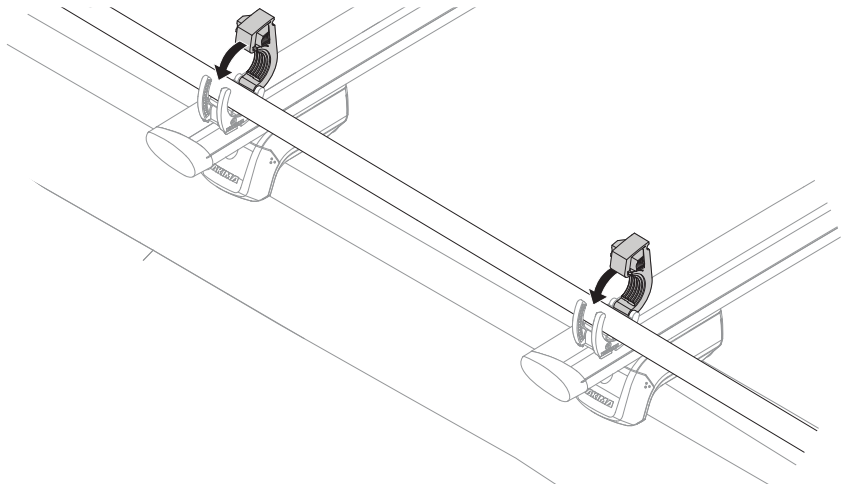
1

Insert your gear into holders. TopGrip can accommodate long handled items with a 1.2-2" (30-50mm) shaft diameter including axes, rakes, brooms, and paddles to a maximum weight of 9 lbs. (4 kg). Ensure any axe blades are orientated towards the rear of the vehicle and facing up or away from you.



2

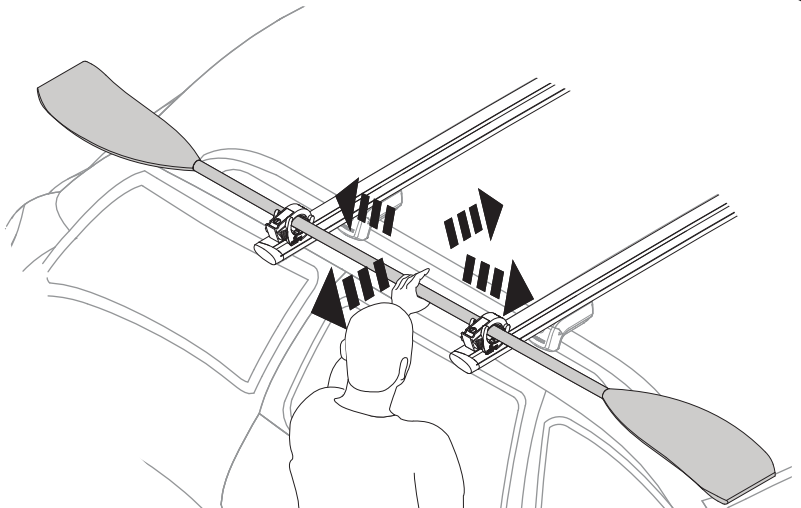
Close TopGrip. Secure gear by pushing TopGrip down as far as it can go. The rubber pads should be compressed to ensure a firm hold.



2X

3

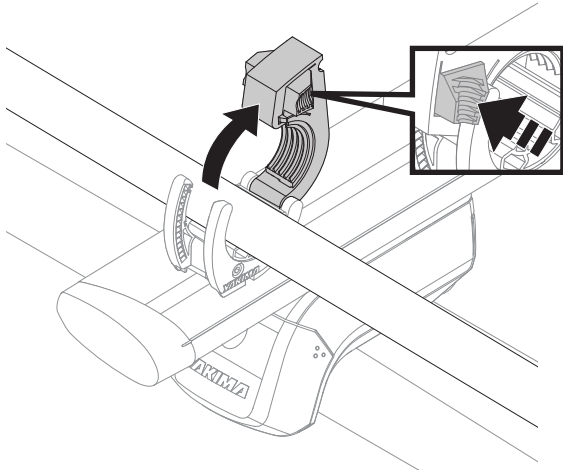
Check to ensure gear is secure. Firmly pull on the gear in all directions. Tighten further if necessary (refer to step 2 of the loading section). If you have purchased and installed lock cores, lock the TopGrip.



UNLOADING

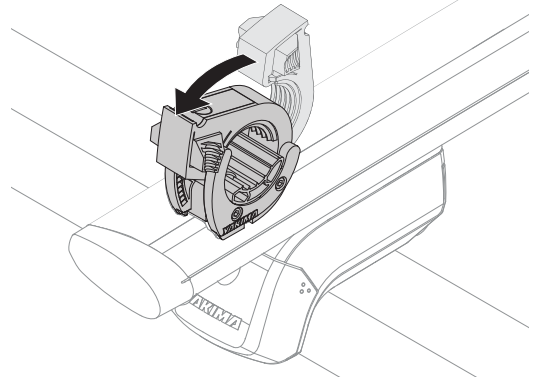
1

Gear removal. To release squeeze the side tabs while pulling the top claw upwards.



2

Close TopGrip when not in use. When not carrying an item, close both holders completely to secure rubber pads in place.



2X

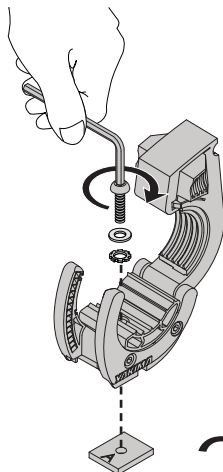
REMOVAL

1. Unload any gear.
2. Loosen and remove TopGrip and all hardware.
3. Store TopGrip in a safe place.

SHOWDOWN INSTALLATION

1

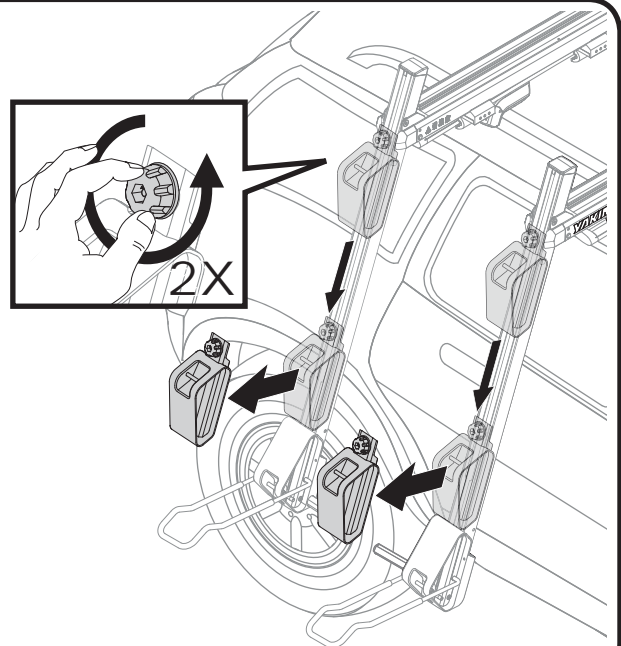
Assemble TopGrip. Using the hex wrench loosely attach an M6 x 18mm bolt with both an M6 washer and M6 toothed washer to an A-plate.



2X

2

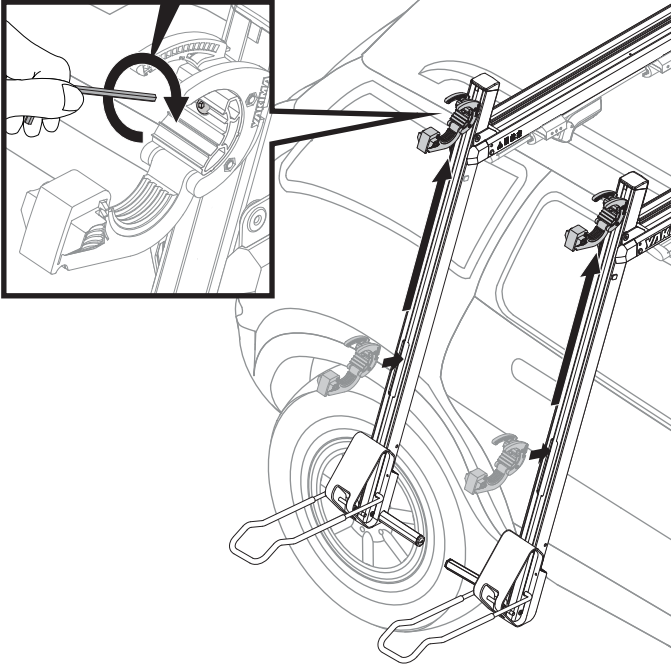
Remove the saddles. Lower ShowDown and remove the saddles



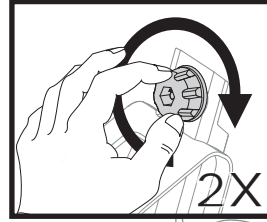
3

Install TopGrip on ShowDown. Insert TopGrip into the slot and slide up to the top. Tighten to 3Nm (2.2 Ft Lbs) with the hex wrench.

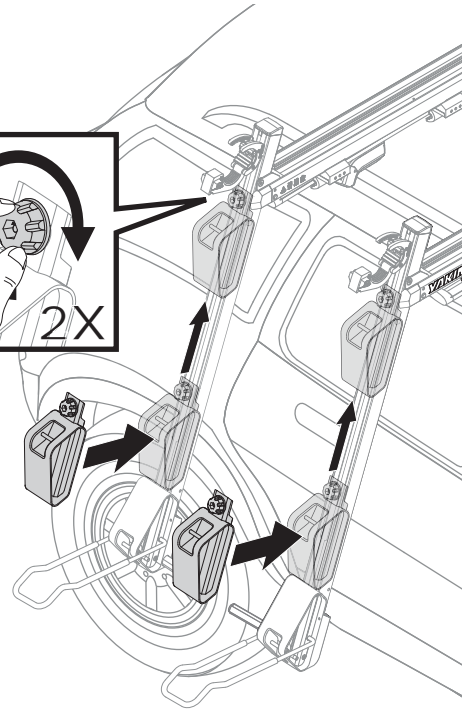
3Nm (2.2 Ft Lbs)



4



Reinstall saddles. Insert the saddles, slide them into position, and fully tighten them down.



5

Proceed with Loading section on page 4.