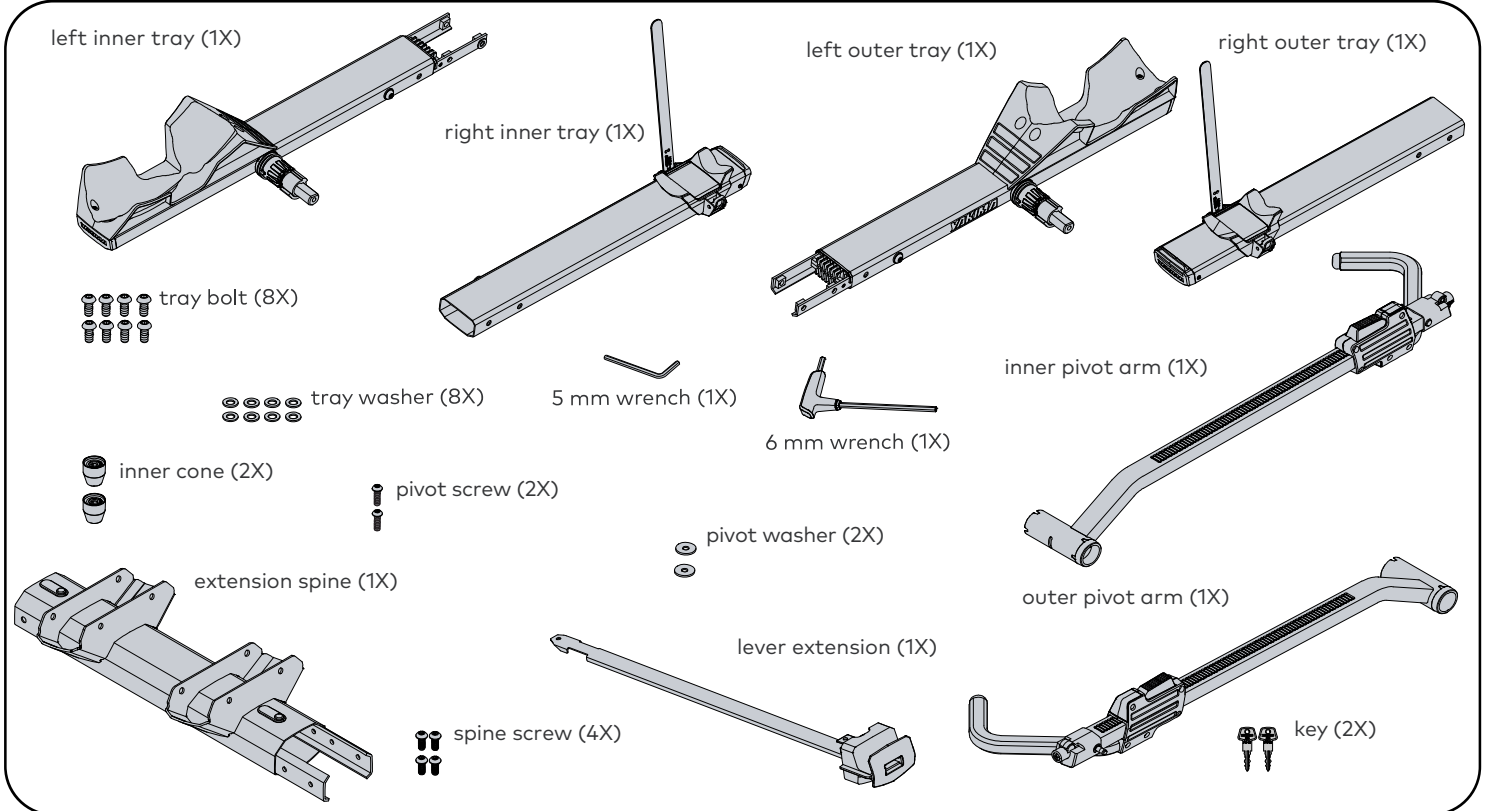


Compatible with BackSwing™ (2" only).


Approved for class III and IV (2") receivers.


NOTE: If you purchased StageTwo™ Fat Bike Kit™ refer to page 9 of your StageTwo instructions for usage.

CONTENTS



LOAD CAPACITY

On Road  = 40 lbs (18.1 kg)

Off Road  = 36 lbs (16.3 kg)
 ①② = 36 lbs (16.3 kg)
 ③④ = 24 lbs (10.9 kg)

AVAILABLE ACCESSORIES

StageTwo Fat Bike Kit #8002735
 (See page 9 of StageTwo™ instructions)
RampUp #8002737
SafetyMate #8002738

TIRE WIDTHS

20" - 29" up to 3.25" tires

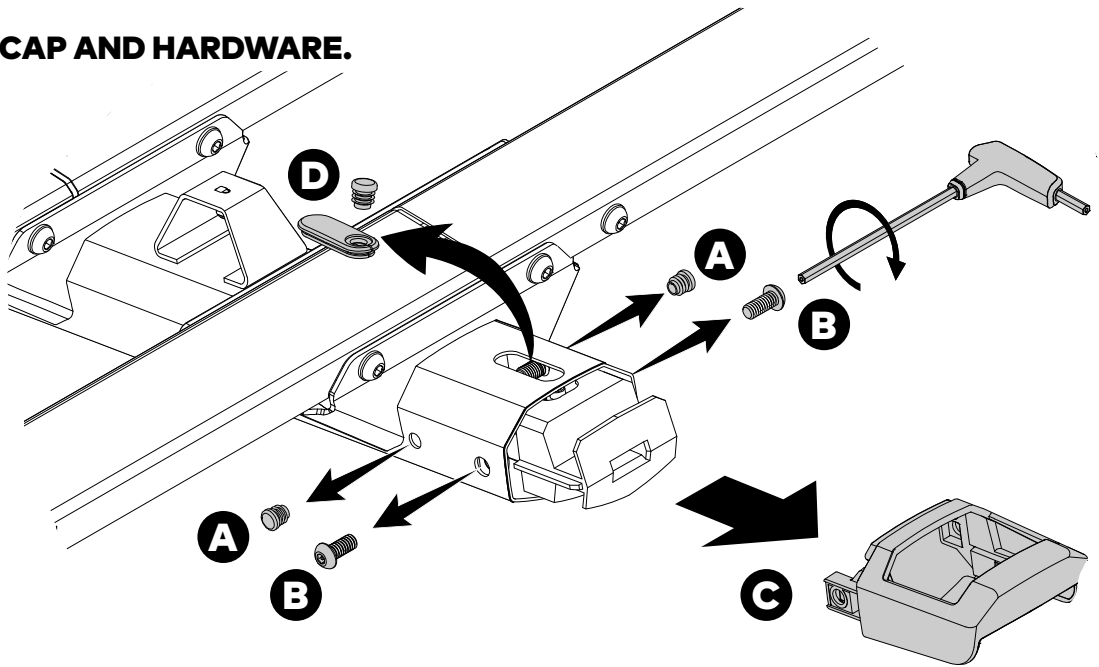
MAXIMUM WHEELBASE

52" (132 cm)

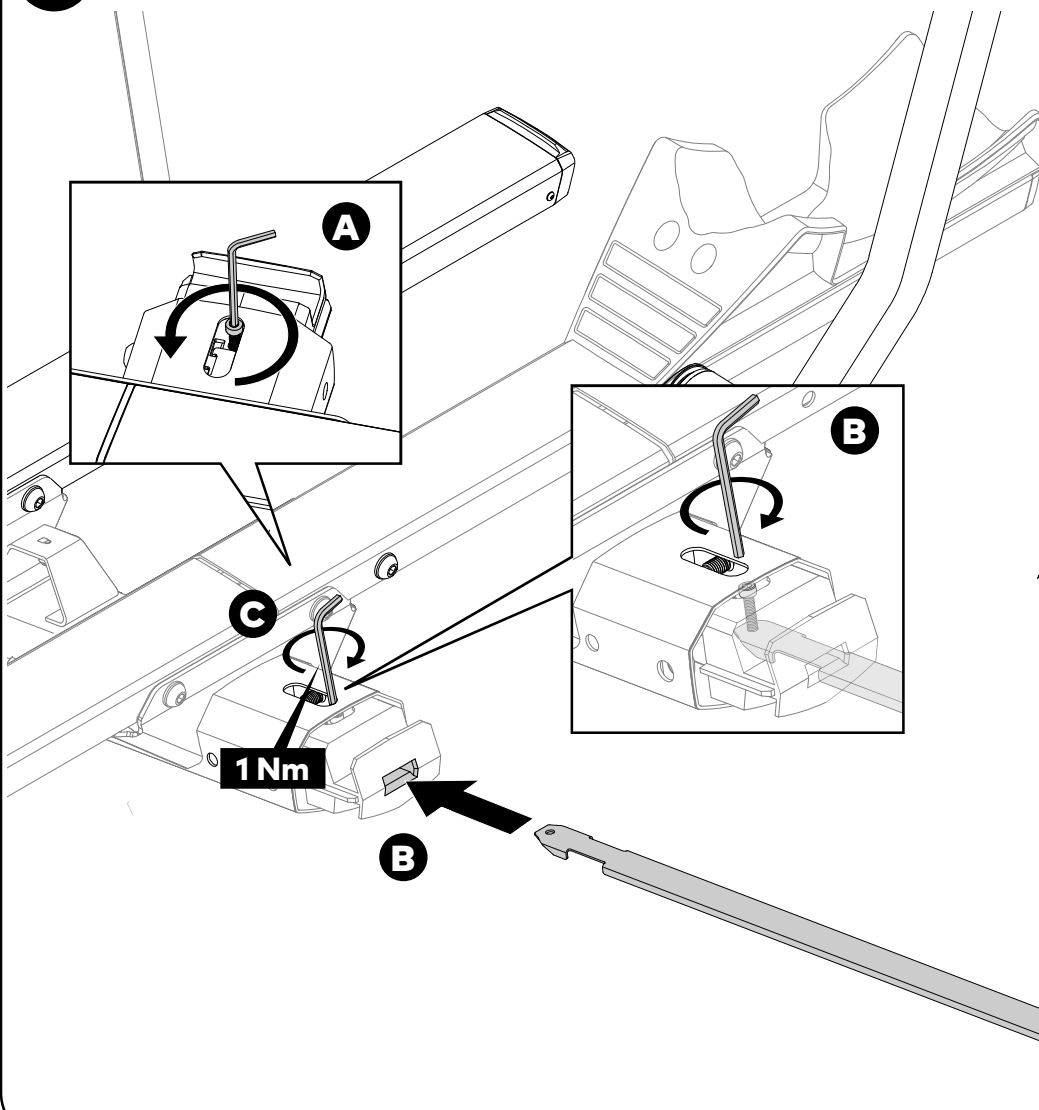
INSTALLATION

1 REMOVE THE ENDCAP AND HARDWARE.

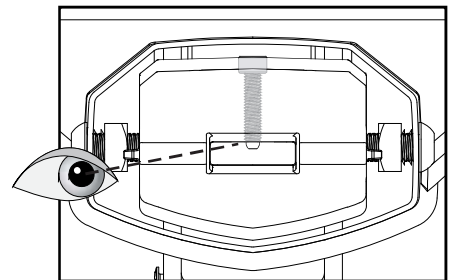
- A. Pry the plugs out using a flat-head screwdriver or other suitable implement.
- B. Use the 6 mm wrench to remove the screws.
- C. Pull the endcap to remove it.
- D. Pry the rubber grommet and plastic plug out using a flat-head screwdriver or other suitable implement.
- E. Set the screws, endcap, and plugs aside.



2 INSTALL THE LEVER EXTENSION.

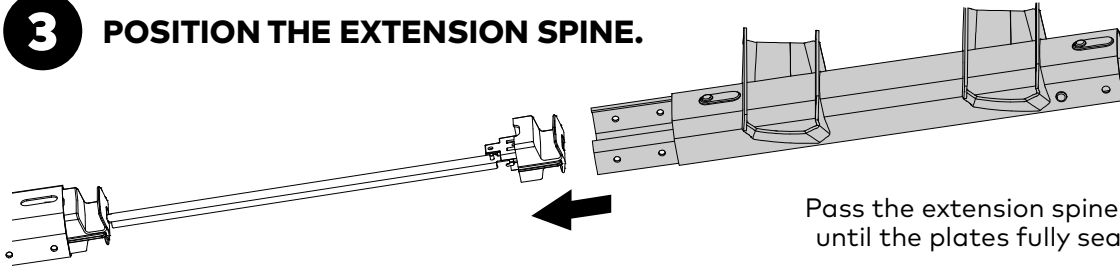


- A. Use the included 5mm wrench to loosen the screw inside the spine. **NOTE:** Do not loosen completely.



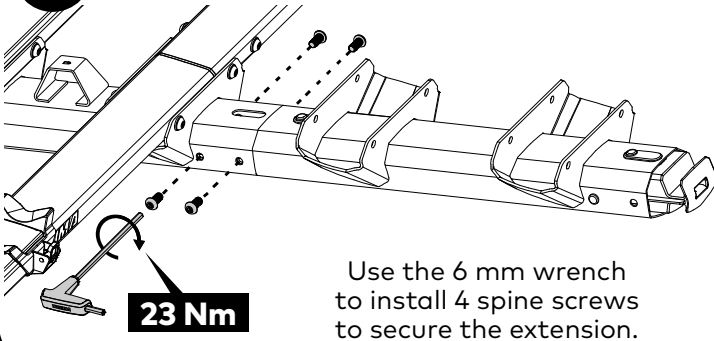
- B. Insert the extension into the slot and align it with the screw through the cutout.
- C. Use the wrench to tighten the screw to 1 Nm. **NOTE:** The screw must pass through the extension and bottom out. Do not over-tighten.

3 POSITION THE EXTENSION SPINE.



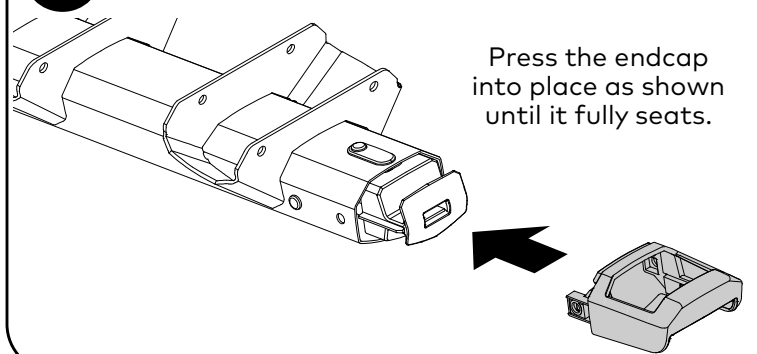
Pass the extension spine over the lever extension until the plates fully seat inside the main spine.

4 SECURE THE EXTENSION SPINE.



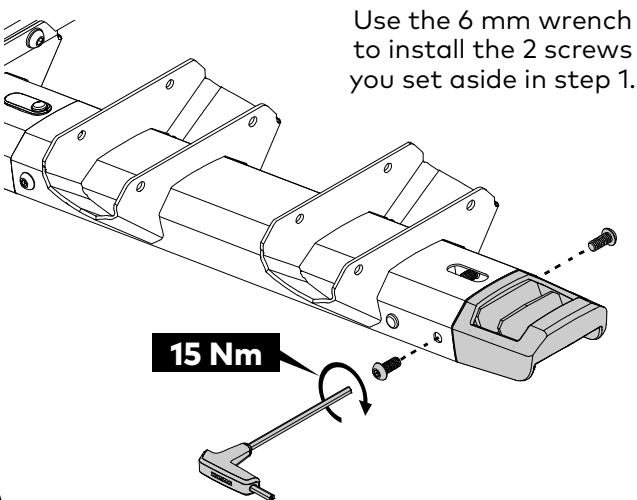
Use the 6 mm wrench to install 4 spine screws to secure the extension.

5 REPLACE THE ENDCAP.



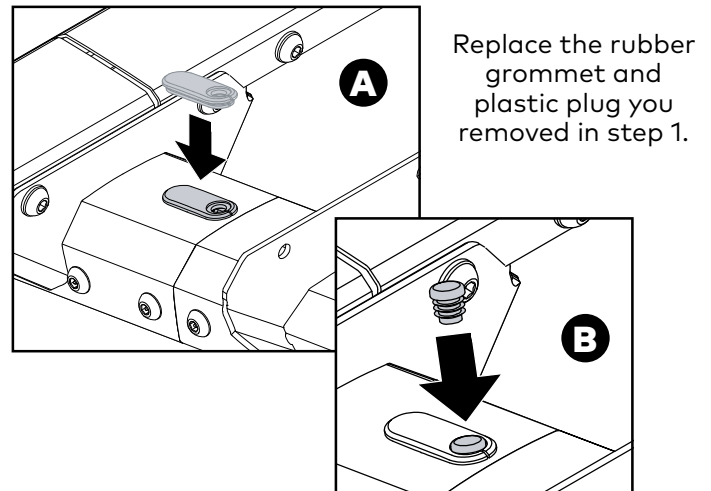
Press the endcap into place as shown until it fully seats.

6 SECURE THE ENDCAP.



Use the 6 mm wrench to install the 2 screws you set aside in step 1.

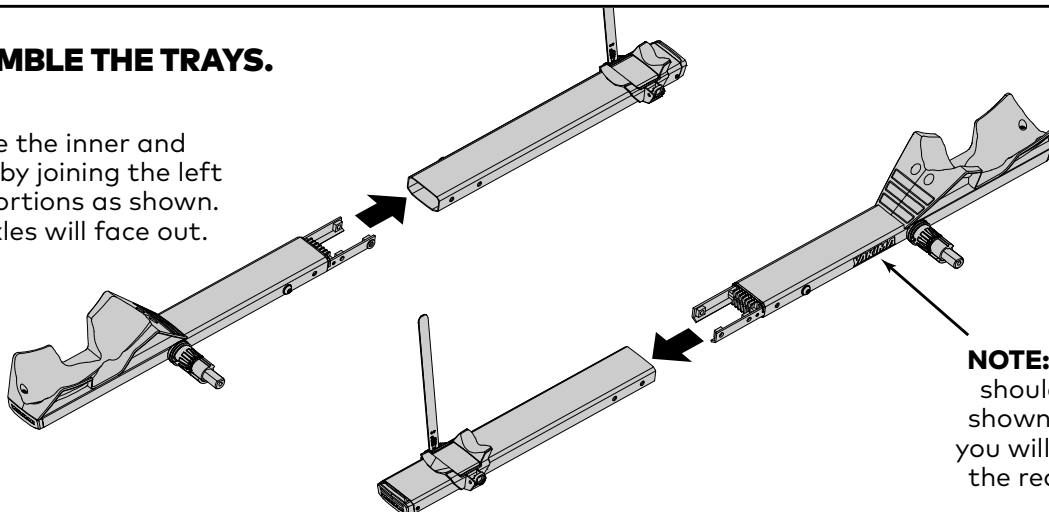
7 REPLACE THE GROMMET AND PLUG.



Replace the rubber grommet and plastic plug you removed in step 1.

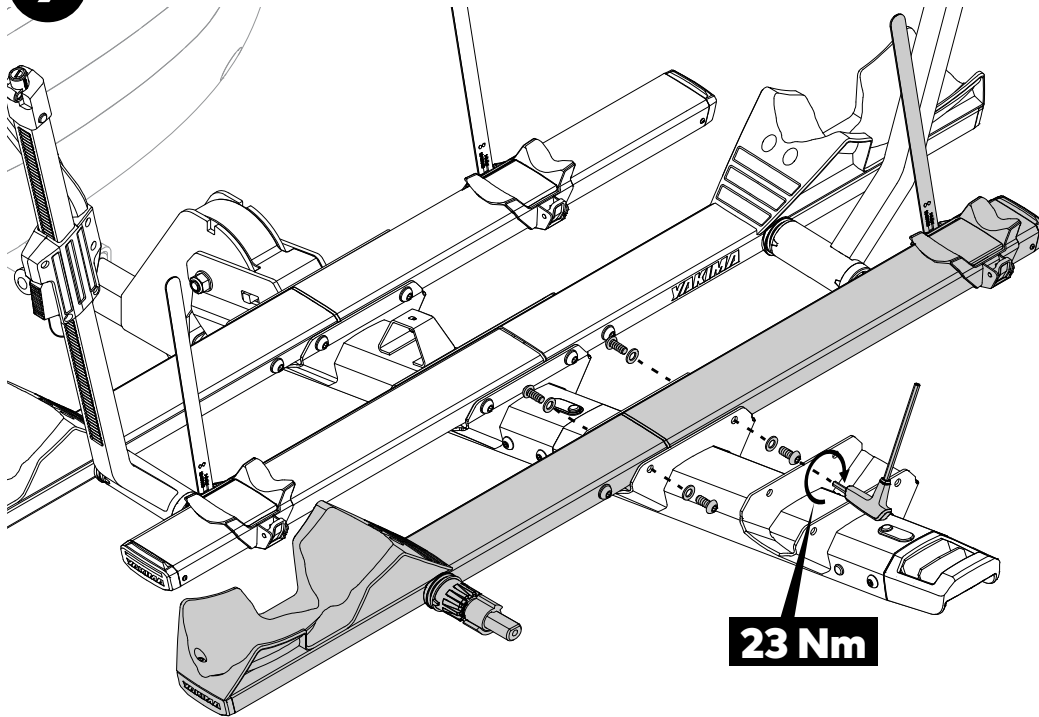
8 ASSEMBLE THE TRAYS.

Assemble the inner and outer trays by joining the left and right portions as shown. The hub axles will face out.



NOTE: The Yakima logo should be oriented as shown. In the next step you will install this tray in the rear-most position.

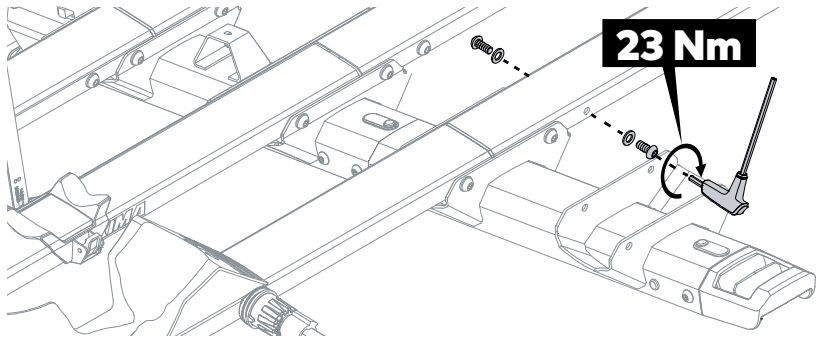
9 INSTALL THE INNER TRAY.



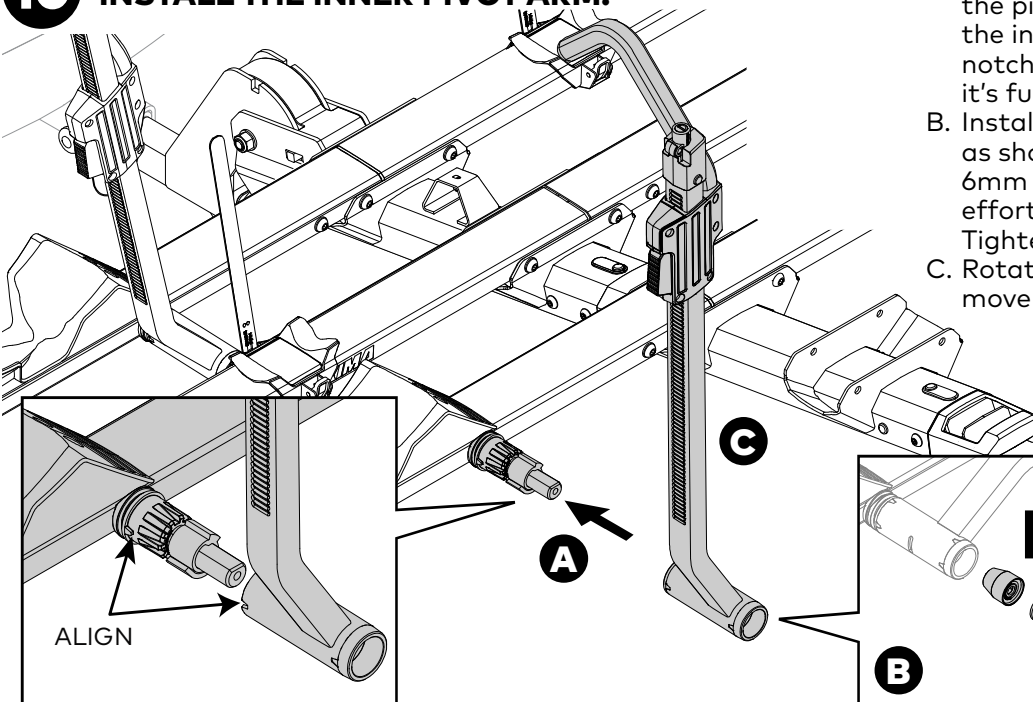
- Place the tray (with large underside logo) into the spine bracket oriented as shown.
- **TIP:** Finger tighten the bolts first. Rock the tray back and forth while installing if necessary. Use the included 6 mm wrench to attach the tray to the tray bracket with 4 tray bolts and 4 tray washers as shown.
- Tighten the hardware completely to 23 Nm.

TRAY ADJUSTABILITY

If preferred, the trays can be installed **CENTERED** but you may lose saddle to handlebar clearance. To center the trays you'll need to remove the installed bolts and reinstall them in the furthest opposite holes as shown here before completing tray installation.



10 INSTALL THE INNER PIVOT ARM.

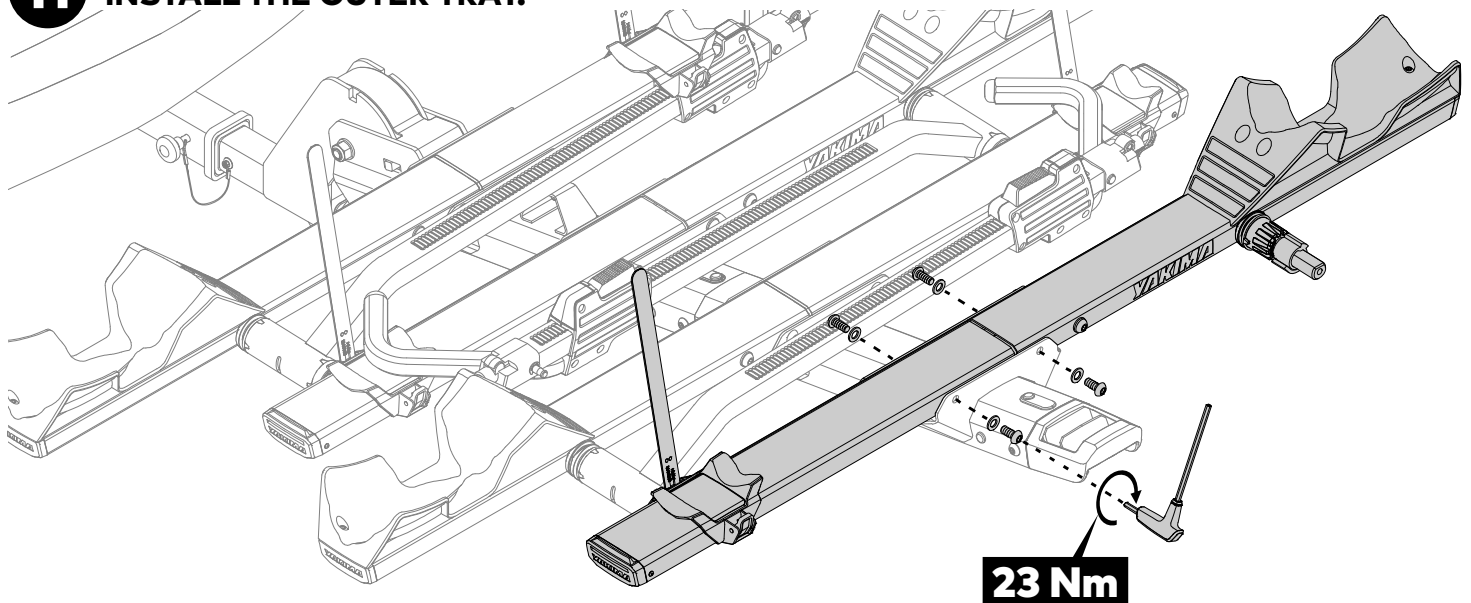


- A. Remove the foam on the hub and install the pivot arm onto the axle, rotating the inner cup so it aligns with the notches on the arm. Press to make sure it's fully seated on the axle.
- B. Install the inner cone, washer, and screw as shown, securing the arm with the 6mm wrench. **NOTE:** This will require effort to get through the thread lock. Tighten to a minimum torque of 10 Nm.
- C. Rotate the arm to check for side to side movement. Tighten as needed.

ALIGN

10 Nm

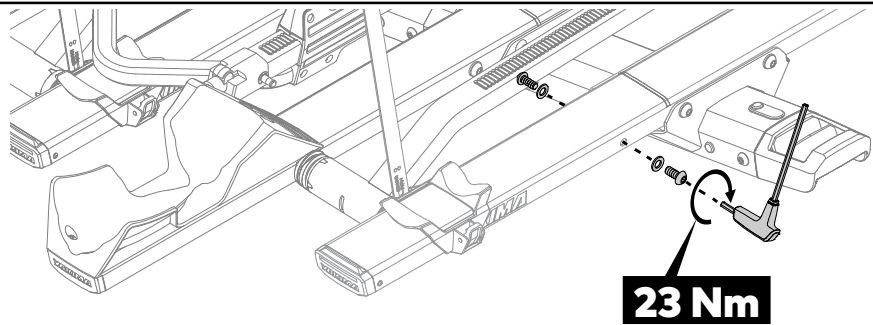
11 INSTALL THE OUTER TRAY.



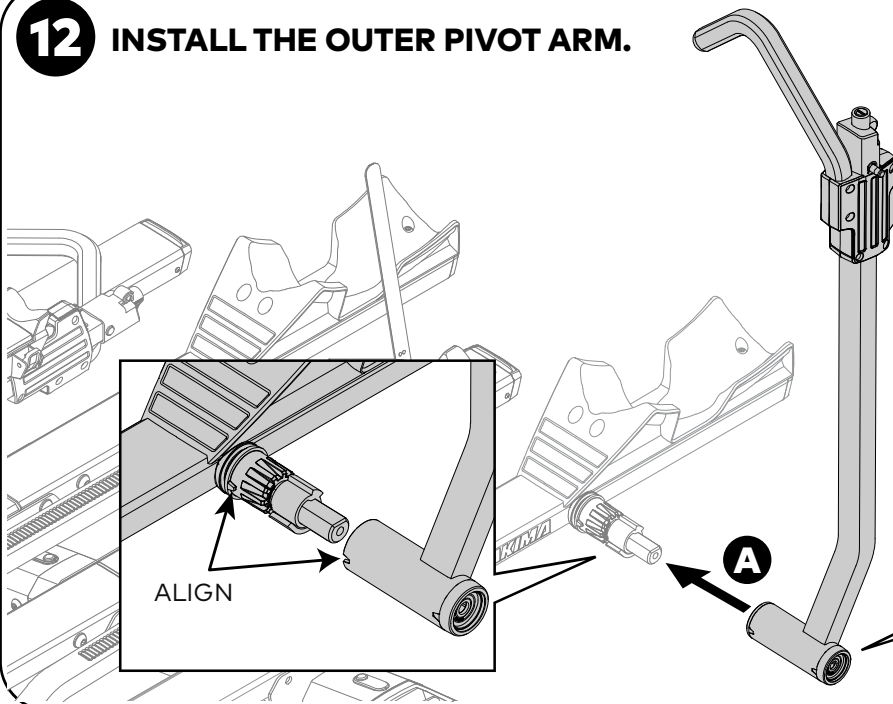
- Place the tray (with large underside logo) into the spine bracket oriented as shown.
- **TIP:** Finger tighten the bolts first. Rock the tray back and forth while installing if necessary. Use the included 6 mm wrench to attach the tray to the tray bracket with 4 tray bolts and 4 tray washers as shown.
- Tighten the hardware completely to 23 Nm.

TRAY ADJUSTABILITY

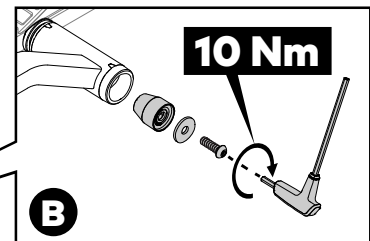
If preferred, the trays can be installed **CENTERED** but you may lose saddle to handlebar clearance. To center the trays you'll need to remove the installed bolts and reinstall them in the furthest opposite hole as shown here before completing tray installation.



12 INSTALL THE OUTER PIVOT ARM.



- A. Remove the foam on the hub and install the pivot arm onto the axle, rotating the inner cup so it aligns with the notches on the arm. Press to make sure it's fully seated on the axle.
- B. Install the inner cone, washer, and screw as shown, securing the arm with the 6mm wrench. **NOTE:** This will require effort to get through the thread lock. Tighten to a minimum torque of 10 Nm.
- C. Rotate the arm to check for side to side movement. Tighten as needed.

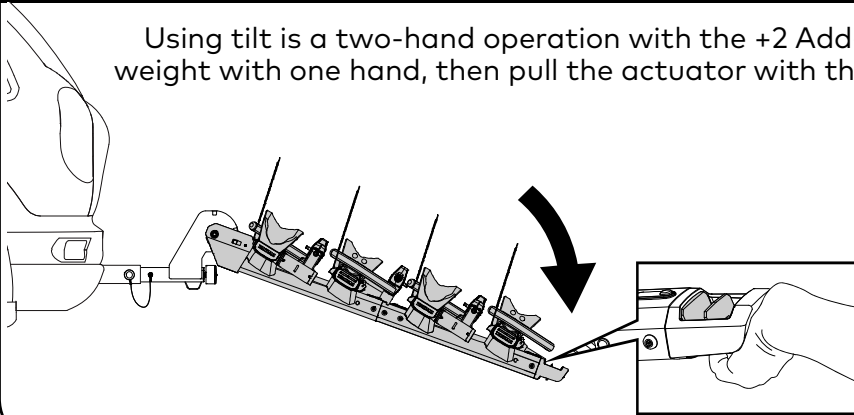


LOADING

Refer to your StageTwo™ user manual for loading (page 5) and locking (page 7) instructions.

TILT FEATURE

Using tilt is a two-hand operation with the +2 Add-On. Lift slightly on the spine to relieve weight with one hand, then pull the actuator with the other to safely release and tilt the rack.



CAUTION: Bikes are heavy! Take precaution when operating the remote handle on the +2 rack. **The rack can drop suddenly if unsupported. Use two hands to lower the rack, especially when loaded.** Keep feet clear and avoid striking the handle on the ground.

OPTIONAL

Refer to your StageTwo user manual for tray adjustment (page 8) instructions.

UNLOADING

Refer to your StageTwo user manual for unloading (page 8) instructions.

REMOVAL

1. Unlock and stow the locking cables.
2. Unload your bikes.
3. Remove the safety pin.
4. Unlock the SpeedKnob and loosen it.
5. Remove the carrier from your vehicle.
6. Store StageTwo with +2 in a safe place.

GUIDELINES

- Do not install this carrier if the spare tire causes interference.
- Remove this carrier before entering an automatic car wash, and when not in use.
- Ground clearance of 10" or higher is recommended.
- The use of hitch splitters, reducers, and non-approved extensions is NOT permitted.

USE

- Do not transport bikes with attached fenders, baby seats, panniers, wheel covers, or full bike covers.
- Not for use with tandem and recumbent bikes.
- Use caution when entering driveways so that the rack does not contact the ground.
- Drive slowly over speed bumps 5-10 mph (8-16 kph) max.
- Always check and abide by your state and local laws before using this product.

SAFETY CHECKS

- Be sure the hooks are properly placed and fully compressed against the wheels.
- Be sure the tires are fully inflated.
- Be sure the wheelstraps are in place securely around the wheels.
- Replace wheelstraps if they are cracked or worn.
- Be sure all hardware is secured according to these instructions.
- Do not position bike tires directly in back of your vehicle's hot exhaust. See page 8 from the StageTwo™ instruction manual to adjust the wheeltray to position the bike out of the way.
- Verify that bikes are secured to rack before operating your vehicle.

READ THESE WARNINGS!

- Attachment hardware can loosen over time. Check and tighten if necessary, before each use.
- Be sure all hardware is secured according to instructions. Failure to perform safety checks before driving away can result in property damage, personal injury, or death.

IMPORTANT!



Be sure to read all the warnings and warranty information contained in the insert accompanying these instructions!

IMPORTANT WARNINGS

Rack Installation

Inadequately secured loads and incorrectly mounted roof racks and accessory racks can come loose during travel and cause serious accidents! Therefore, installation, handling and use must be carried out in accordance with product and vehicle instructions.

In addition to these instructions, review the mounting instructions for the roof rack and the operating instructions of the vehicle.

These instructions should be kept together with the vehicle's operating instructions and carried in the vehicle when in use and en route.

For your own safety, you should only use roof racks that are authorized for use with your vehicle.

For roof racks that do not specify the distance between the front and rear crossbars, the distance shall be at least 700 mm or as large as possible. Please note that changes (e.g. additional drill holes) to the accessory rack's attachment system are not permissible.

Check attachment hardware and load for tight fit and function:

- Before the start of any journey.
- After driving a short distance following rack or load install.
- At regular intervals on longer journeys.
- More frequently on rough terrain.
- After interruption of a journey during which the vehicle was left unsupervised (check for damage due to outside intervention).

Rack Loading

Do not exceed the maximum load specified for the roof rack, accessory rack or the maximum load recommended by the vehicle manufacturer.

Max Roof Load = weight of roof rack + weight of accessory racks + weight of load.

Load shall be uniformly distributed with the lowest possible center of gravity.

Load should not substantially extend beyond the loading surface of the roof rack.

Vehicle Driving and Regulations

The speed driven must be suited to the load transported and to official speed limits. In the absence of any speed limits, we recommend a maximum speed of 80 mph (130 km/h).

When transporting any load, the speed of the vehicle must take into account all conditions such as the state of the road, the surface of the road, traffic conditions, wind, etc. Vehicle handling, cornering, braking and sensitivity to side winds will change with the addition of roof top loads.

If this product is off-road certified, it is designed and intended to be used on forest service roads, access roads or other non-technical terrains at moderate speeds. It is not to be used while rock-crawling, jumping, bogging, or other technical off-road terrains. When using off-road certified products with non-off-road certified products, always follow the warnings and restrictions stated in the non-off-road certified product instructions.

Maintenance

The accessory rack should be carefully cleaned and maintained, particularly during the winter months. Use only a solution of water and standard car wash liquid without any alcohol, bleach or ammonium additives.

For reasons of fuel economy and the safety of other road users, the accessory rack and roof rack should be removed when not in use.

Periodically inspect accessory rack for damage. Replace lost, damaged or worn parts. Use only original spare parts obtained from a stocking specialist, dealer or manufacturer.

Any changes made to the roof racks and accessory racks as well as the use of spare parts or accessories other than those supplied by the manufacturer will lead to the lapsing of the manufacturer's warranty and liability for any material damage or accidents. You should observe these instructions to the letter and only use the original parts supplied.