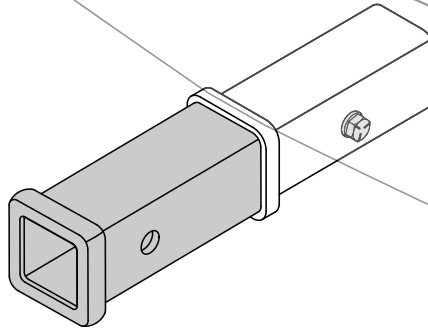




Approved for class III and IV (2") receivers.

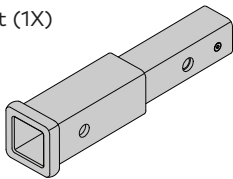


Not Approved for towing.



CONTENTS

StraightShot (1X)



hitch bolt (1X)



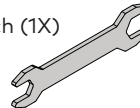
lock washer (1X)



bridge pin (1X)

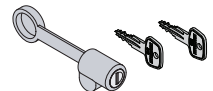


wrench (1X)



Available accessories

HitchLock
#8007235

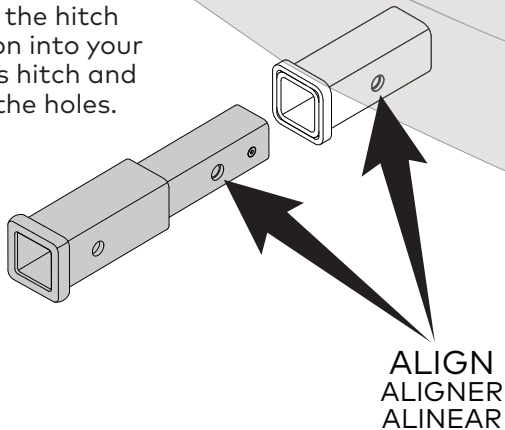


All hardware must be tightened completely. Torque values are given for reference.

INSTALLATION

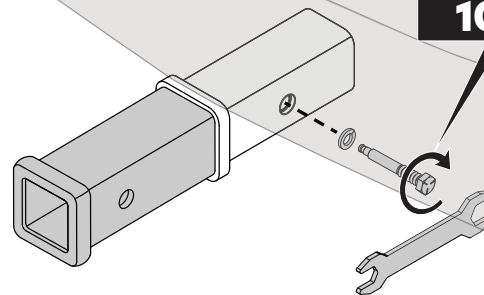
1 INSERT THE STRAIGHTSHOT INTO VEHICLE'S HITCH.

Insert the hitch extension into your vehicle's hitch and align the holes.



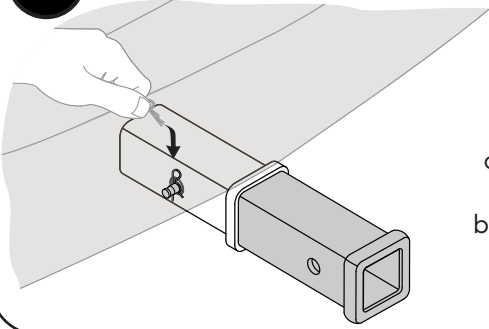
2 INSTALL THE HITCH BOLT.

**75 ft-lbs
100 Nm**



Use the wrench provided to install the hitch bolt and washer as shown. Fully tighten the bolt to 75 ft-lbs.

3 INSTALL THE BRIDGE PIN.



Install the bridge pin onto the end of the hitch bolt as shown.

USE

Install your hitch product into the StraightShot by following the instructions that came with that product.

REMOVAL

1. Uninstall any accessory product you have installed into the StraightShot.
2. Remove the bridge pin.
3. Use the wrench provided to loosen and remove the hitch bolt and lock washer.
4. Remove the StraightShot and store it in a safe place.

IMPORTANT WARNINGS



HITCH EXTENSION IS LIMITED TO USE WITH APPROVED YAKIMA PRODUCTS.

This product is designed for use with 2" dedicated hitch products. Yakima cannot test all possible hitch product variations and therefore cannot guarantee all products will work with StraightShot. Any rack or basket used with this product that has not been tested is considered "use at your own risk". For a list of approved products please visit www.yakima.com/straightshot.

- Use product as directed. Failure to use as directed will void warranty.
- Do not use with RVs or trailers.
- Do not use for towing
- Do not use with a hitch-extender.
- Do not use with a 1-1/4" hitch adapter.
- Do not use in combination with the Yakima BackSwing.
- Vehicles with a rear axle to hitch pin hole distance of greater than 50" cannot use this product (Sprinter vans of 144" wheelbase and shorter only!).
- Do not install if spare tire causes interference with bikes, or folded carrier.
- Check vehicle ground clearance before use.
- Do not overload your existing hitch product. Consult the instructions for your existing hitch product for weight limits.
- Do not position bicycle tires near vehicle's hot exhaust.
- Do not use an automated car wash with a carrier installed.
- Drive slowly over speed bumps (5-10 mph max).
- Keep in mind the added distance from your hitch will amplify deflection. Please drive accordingly.
- Never drive off-road with the StraightShot installed (well maintained gravel roads are permitted).

IMPORTANT WARNINGS

Rack Installation

Inadequately secured loads and incorrectly mounted roof racks and accessory racks can come loose during travel and cause serious accidents! Therefore, installation, handling and use must be carried out in accordance with product and vehicle instructions.

In addition to these instructions, review the mounting instructions for the roof rack and the operating instructions of the vehicle.

These instructions should be kept together with the vehicle's operating instructions and carried in the vehicle when in use and en route.

For your own safety, you should only use roof racks that are authorized for use with your vehicle.

For roof racks that do not specify the distance between the front and rear crossbars, the distance shall be at least 700 mm or as large as possible. Please note that changes (e.g. additional drill holes) to the accessory rack's attachment system are not permissible.

Check attachment hardware and load for tight fit and function:

- Before the start of any journey.
- After driving a short distance following rack or load install.
- At regular intervals on longer journeys.
- More frequently on rough terrain.
- After interruption of a journey during which the vehicle was left unsupervised (check for damage due to outside intervention).

Rack Loading

Do not exceed the maximum load specified for the roof rack, accessory rack or the maximum load recommended by the vehicle manufacturer.

Max Roof Load = weight of roof rack + weight of accessory racks + weight of load.

Load shall be uniformly distributed with the lowest possible center of gravity.

Load should not substantially extend beyond the loading surface of the roof rack.

Vehicle Driving and Regulations

The speed driven must be suited to the load transported and to official speed limits. In the absence of any speed limits, we recommend a maximum speed of 80 mph (130 km/h).

When transporting any load, the speed of the vehicle must take into account all conditions such as the state of the road, the surface of the road, traffic conditions, wind, etc. Vehicle handling, cornering, braking and sensitivity to side winds will change with the addition of roof top loads.

If this product is off-road certified, it is designed and intended to be used on forest service roads, access roads or other non-technical terrains at moderate speeds. It is not to be used while rock-crawling, jumping, bogging, or other technical off-road terrains. When using off-road certified products with non-off-road certified products, always follow the warnings and restrictions stated in the non-off-road certified product instructions.

Maintenance

The accessory rack should be carefully cleaned and maintained, particularly during the winter months. Use only a solution of water and standard car wash liquid without any alcohol, bleach or ammonium additives.

For reasons of fuel economy and the safety of other road users, the accessory rack and roof rack should be removed when not in use.

Periodically inspect accessory rack for damage. Replace lost, damaged or worn parts. Use only original spare parts obtained from a stocking specialist, dealer or manufacturer.

Any changes made to the roof racks and accessory racks as well as the use of spare parts or accessories other than those supplied by the manufacturer will lead to the lapsing of the manufacturer's warranty and liability for any material damage or accidents. You should observe these instructions to the letter and only use the original parts supplied.