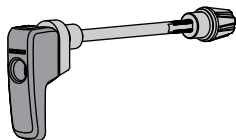


YAKIMA

Universal QR Locking Skewer

CONTENTS

skewer (1x)



For general use

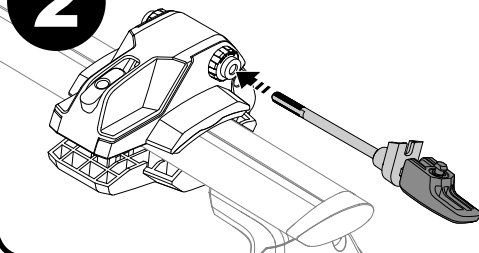
1

Remove knob.



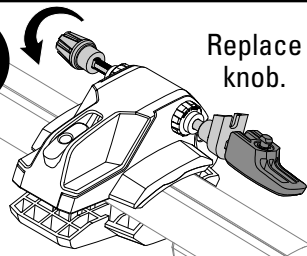
2

Insert into carrier.



3

Replace knob.



Now you're ready to load your bike onto your carrier. Follow the instructions that came with your carrier.

For Yakima HighSpeed

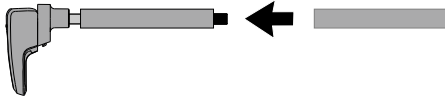
1

Remove knob.



2

Install sleeve from HighSpeed.

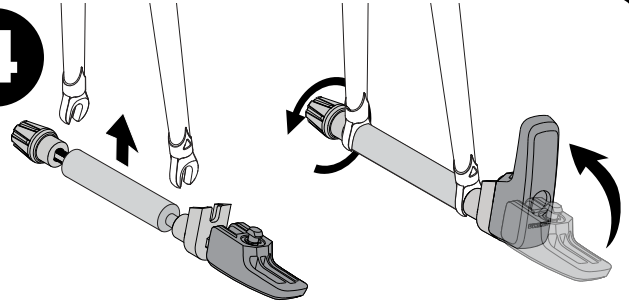


3

Replace knob leaving room for your forks.



4



Remove your front wheel. Install the Skewer with sleeve. **Adjust skewer until cam lever closes tightly.**

Now you're ready to load your bike onto your carrier. Follow the instructions that came with your carrier.