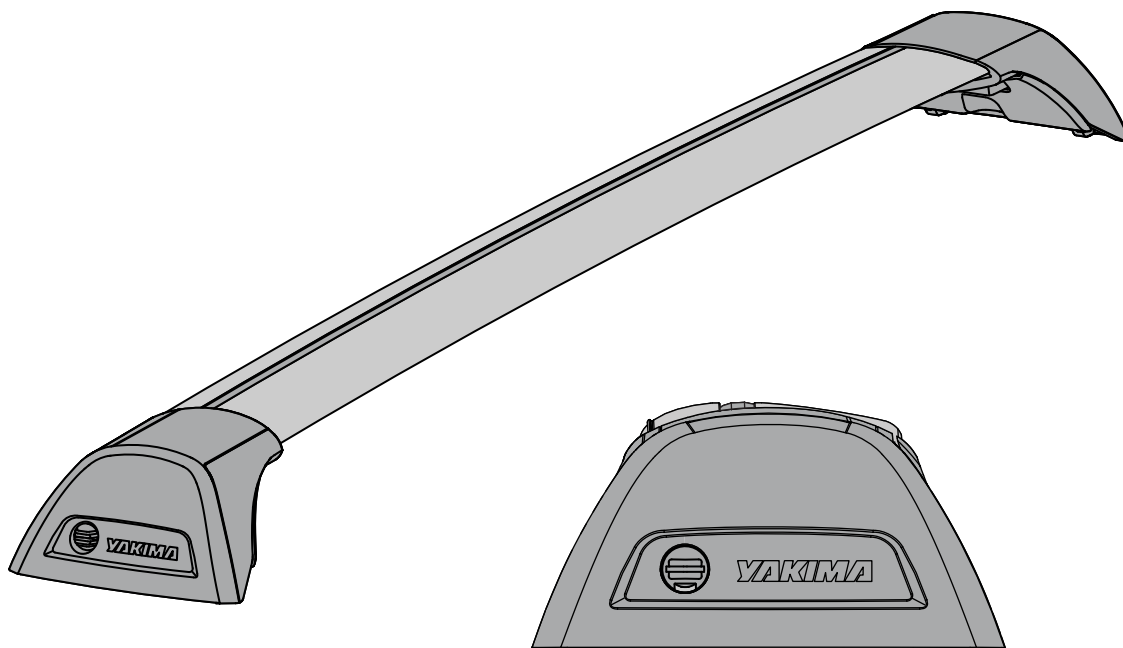
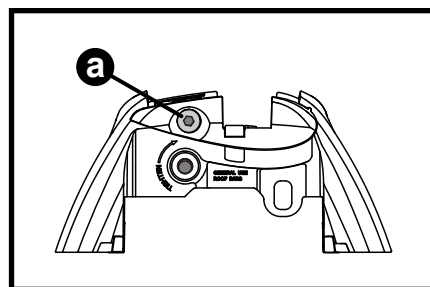
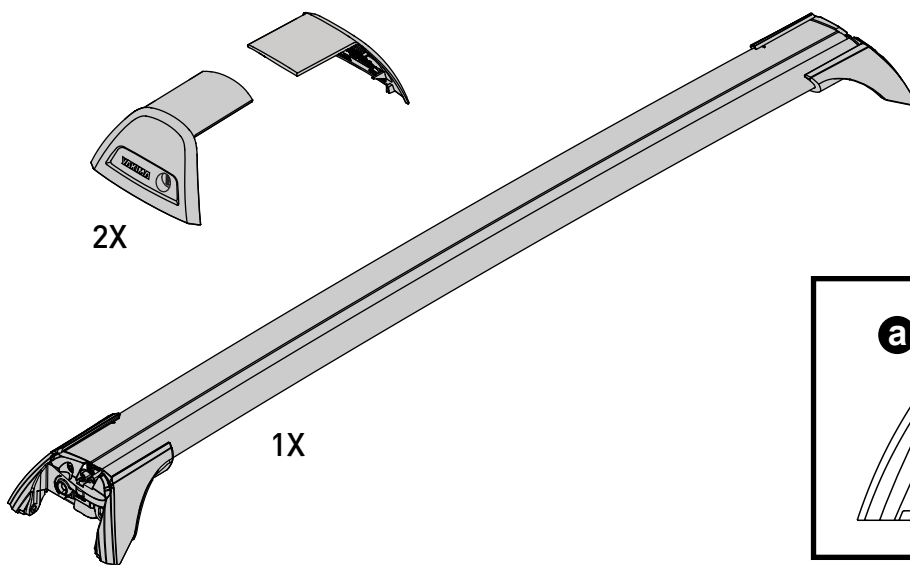


# YAKIMA

# FlushBar



## Contents

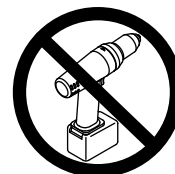


## Available accessories



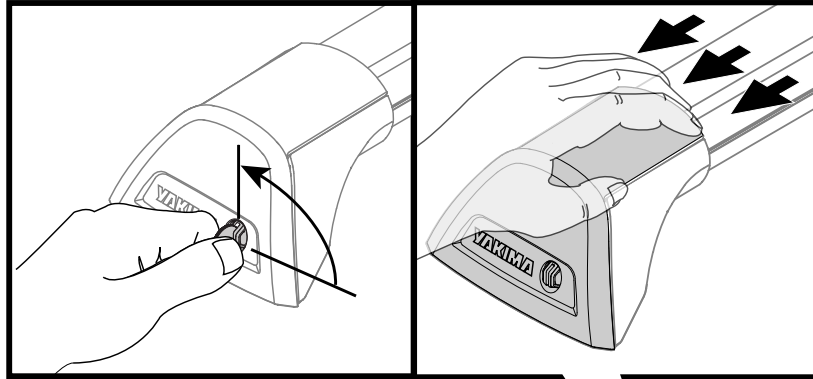
**2-Pack SKS Locks**  
Serrures SKS (x 2)  
Kit doble de cerraduras SKS  
**#8007202**

  
**NO POWER TOOLS!**

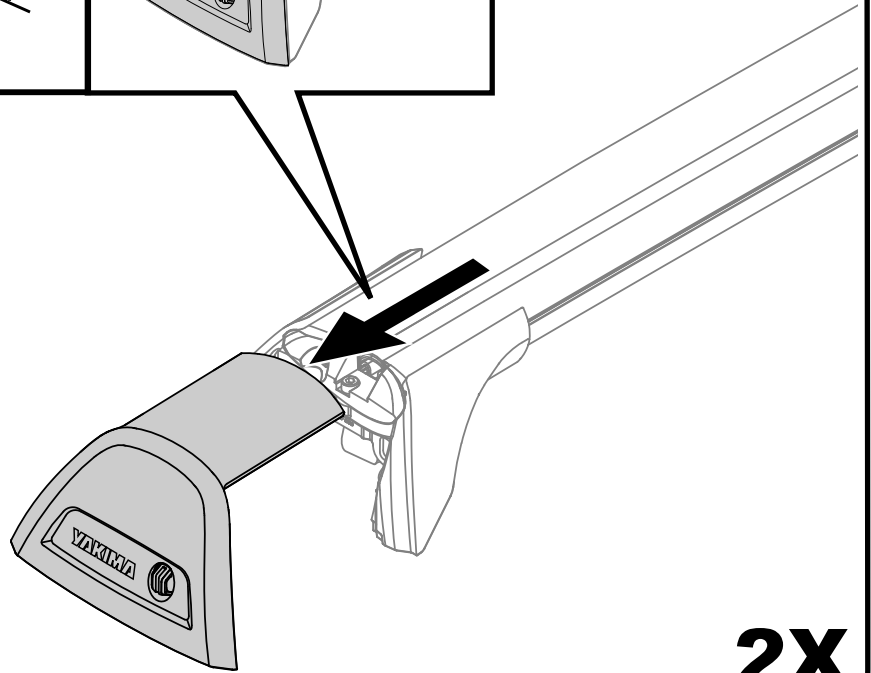


# INSTALLATION

1



Use a coin to turn the twist plug.



**2X**

2

To fit roof rack to vehicle, refer to Fitting Kit instructions.

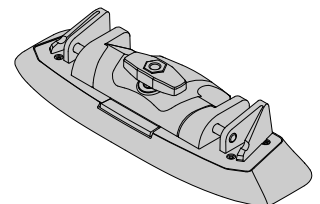
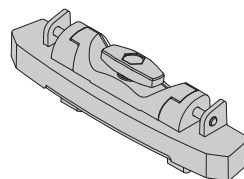
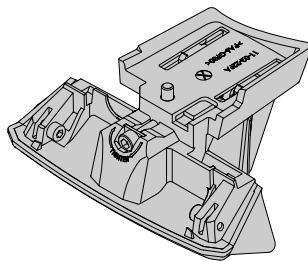
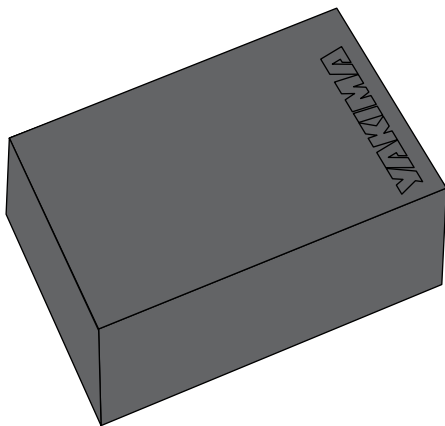
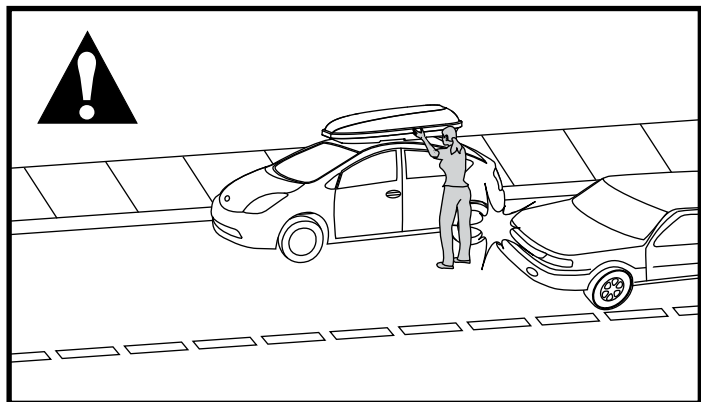
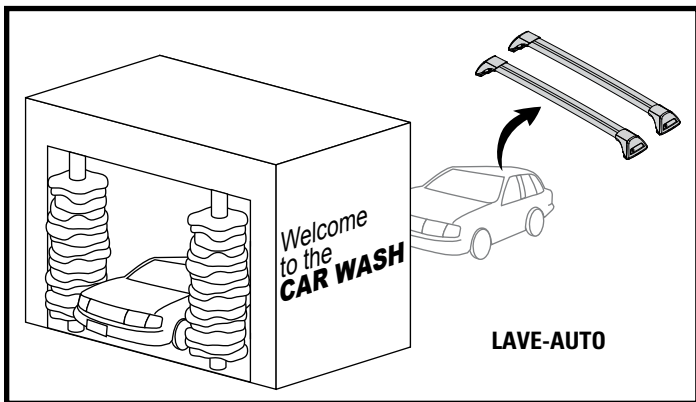
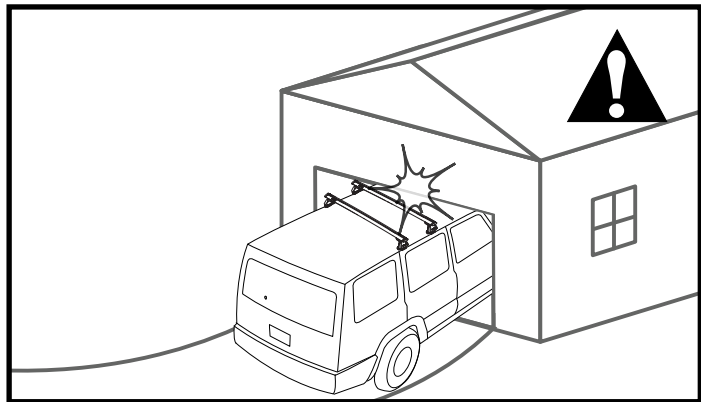
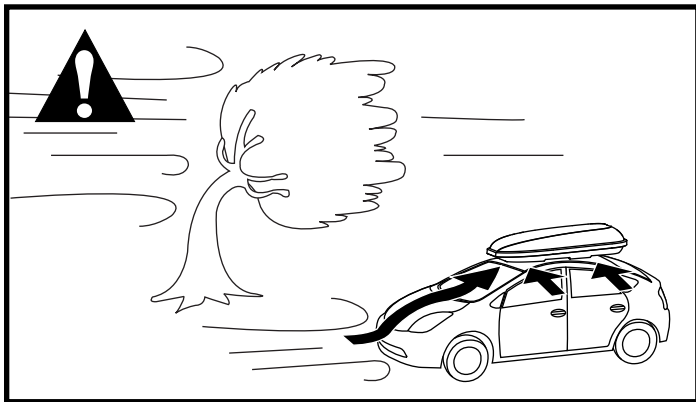
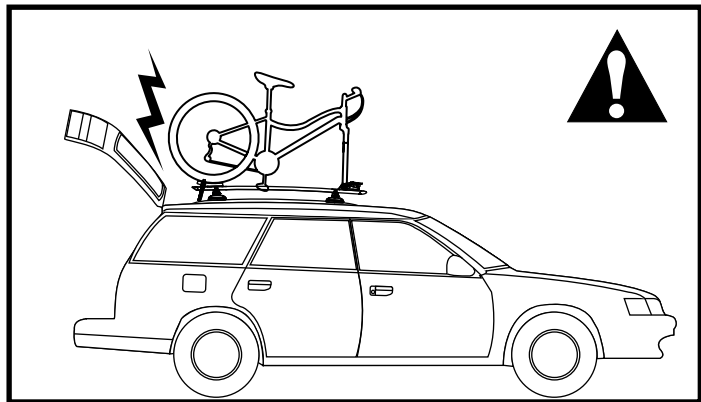
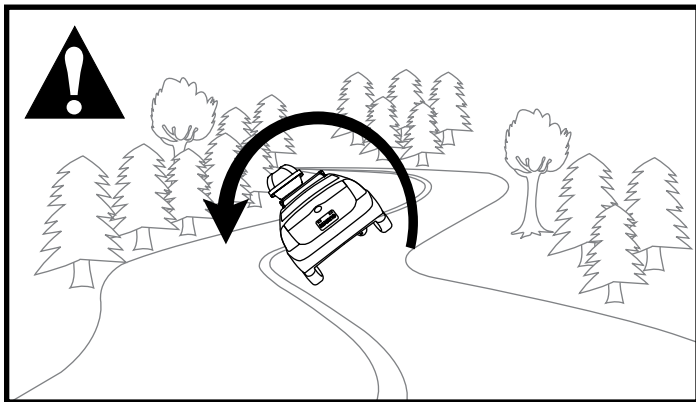


Diagram illustrating car height measurement. The top part shows a car with a height measurement line. The bottom part shows a car with a roof rack, with a dashed line indicating a height of **XX m**. To the right, a warning icon (exclamation mark in a triangle) is shown above a car with a roof rack entering a building, with a starburst indicating damage. Below this is the text **Record Height Here.** and a shaded rectangular box for recording the height.





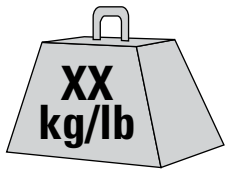
Failure to check towers before driving away can result in property damage, personal injury, or death.

## IMPORTANT!

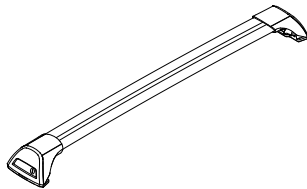


Be sure to read all the warnings and warranty information contained in the insert accompanying these instructions!

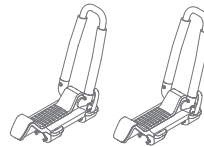
## WEIGHT LIMITS



LOAD



THIS PRODUCT (7 LBS. / 3.2KG)



ANY ACCESSORIES



Not more than 165 lbs. (75kg) unless otherwise noted.

## LONG LOADS

Any load extending over the windshield (except luggage boxes) must be secured to both the front and rear of the vehicle, in addition to the rack. Failure to do so can result in property damage, personal injury or death.

