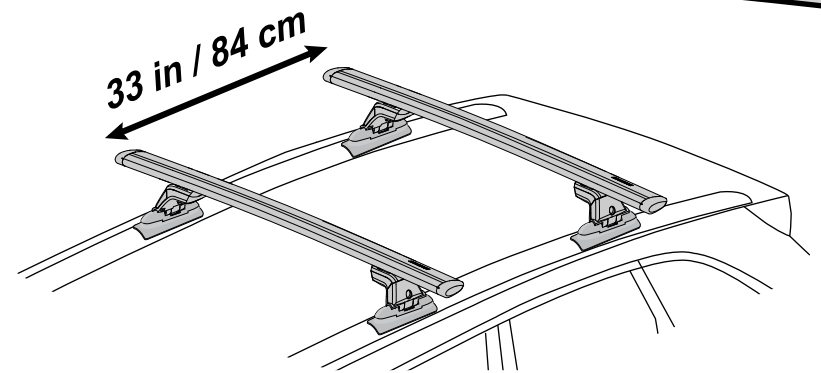
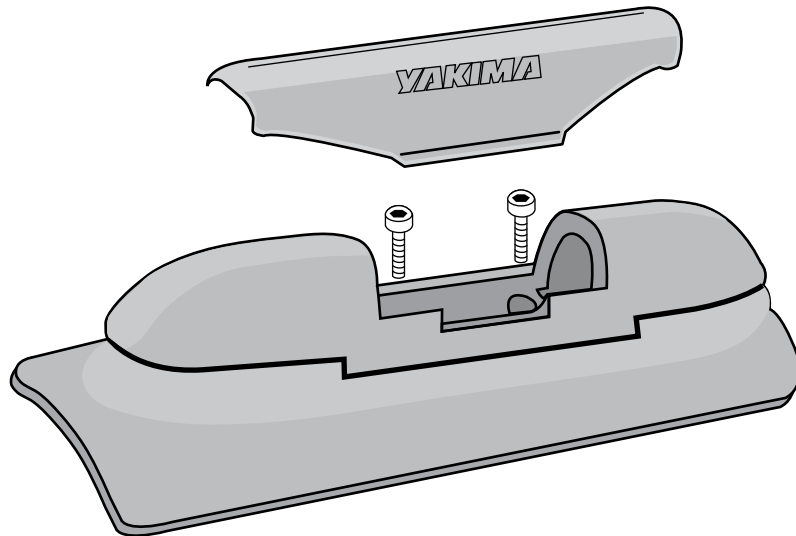
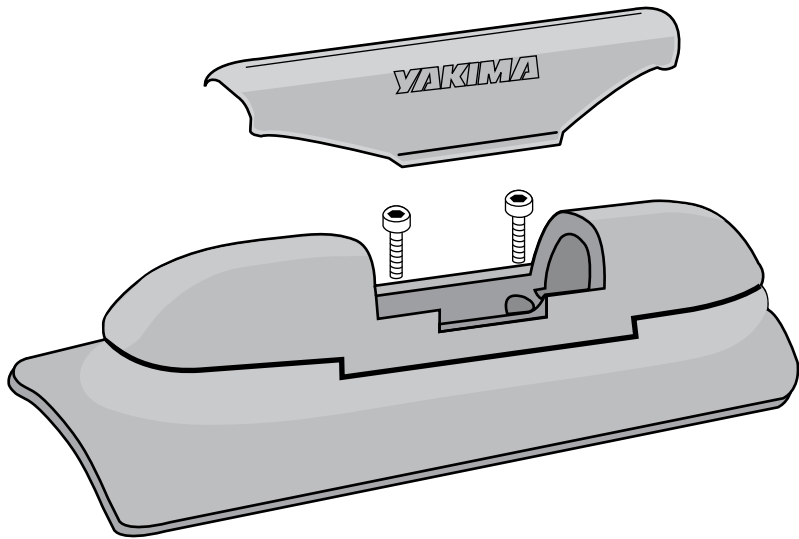


# YAKIMA

## LANDING PAD 8



Crossbar spread fixed at 33 inches

**INCLUDED TOOL:**  
5 mm Allen wrench



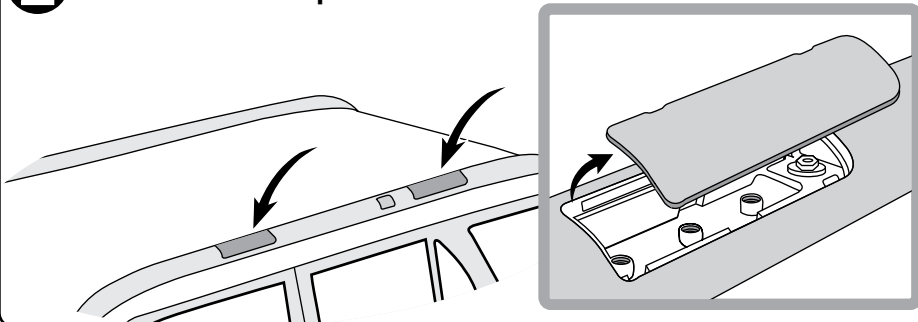
Refer to YAKIMA SkyLine or Control Tower instructions for important warning and load limitations, and YAKIMA's limited warranty.

**1**

If your vehicle has factory crossbars, remove them now.

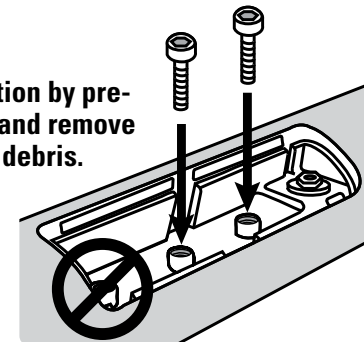
**2**

Remove trim cover plates.

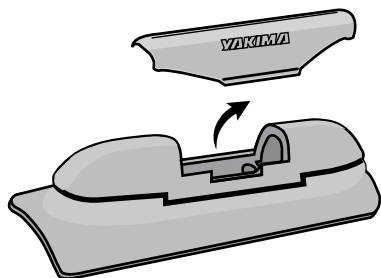
**3**

Prepare holes for installation by pre-installing screws. Install and remove until holes are free of debris.

Use the 2 holes closest to the rear of the vehicle.

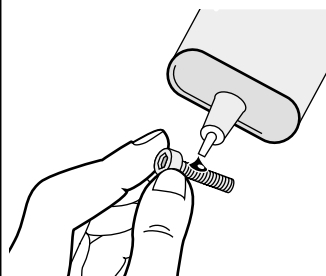
**4**

Remove cover from Landing Pad.

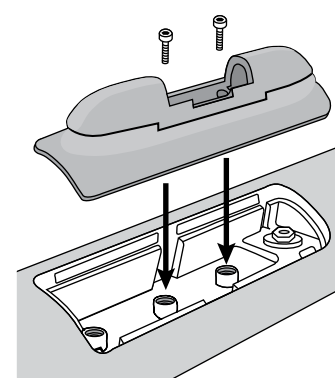
**5**

**LUBRICATE THE BOLTS.**

Apply a water-insoluble lubricant to bolts.

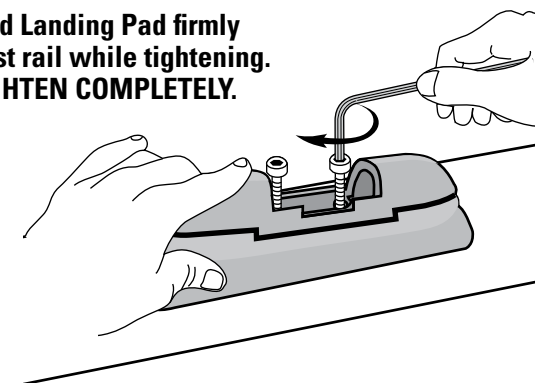
**6**

Align base with 2 rear holes.

**7**

Hold Landing Pad firmly against rail while tightening. **TIGHTEN COMPLETELY.**

**!**  
Make sure base is parallel to track.



### READ THESE WARNINGS!



**ATTACHMENT HARDWARE CAN LOOSEN OVER TIME. CHECK AND TIGHTEN IF NECESSARY, BEFORE EACH USE.**

*Be sure all hardware is secured according to instructions. Failure to perform safety checks before driving away can result in property damage, personal injury, or death.*



- Consult your local dealer or fit list to see load limitations for accessories.
- Do not exceed your factory rack limitation.

Remove your YAKIMA rack and accessories before entering automatic car washes.

**8** Continue with SkyLine or Control Tower installation.