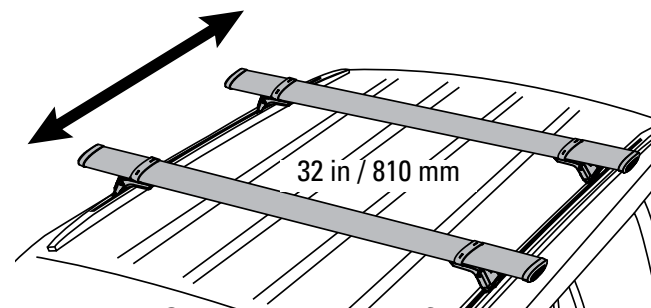
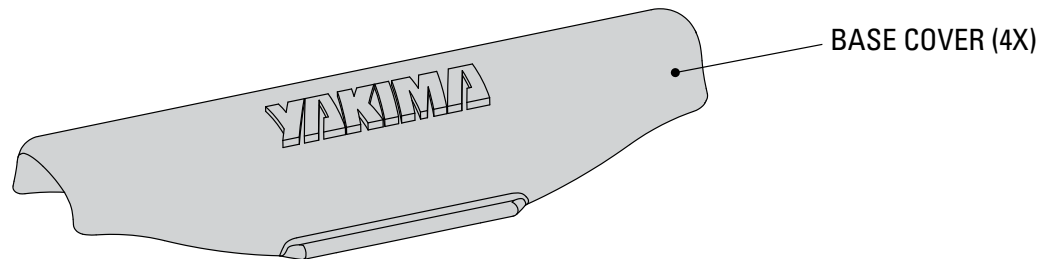
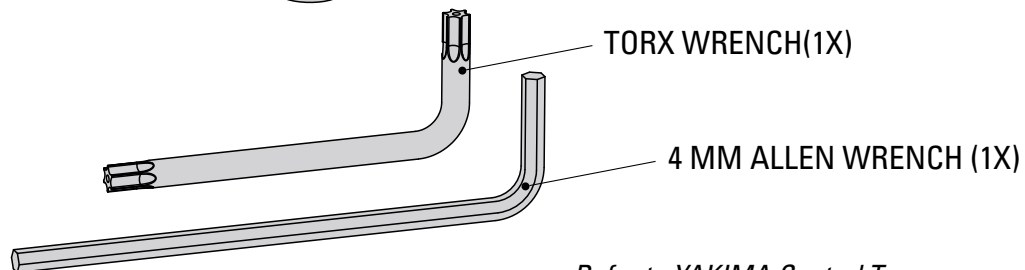
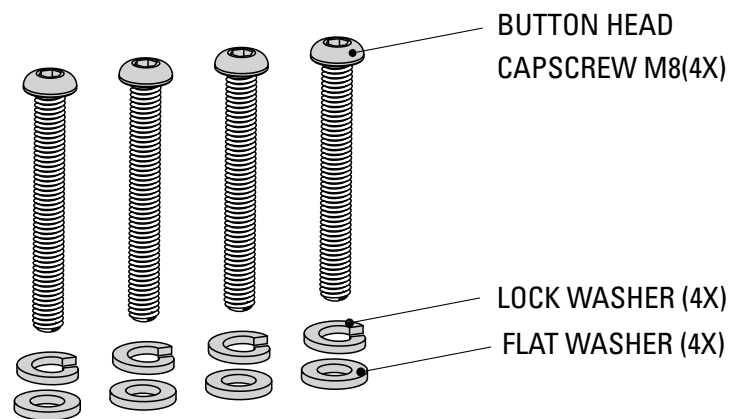
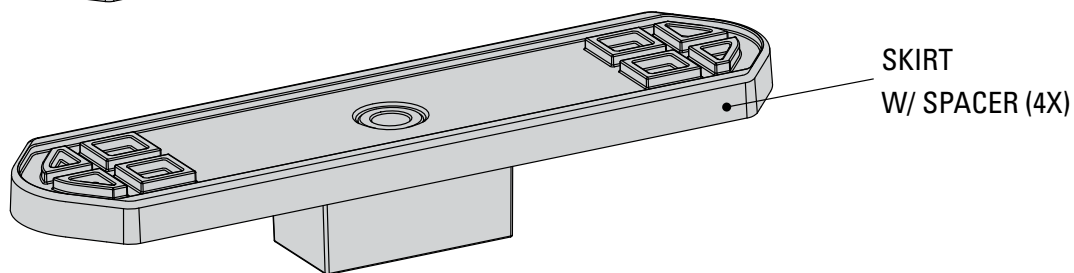
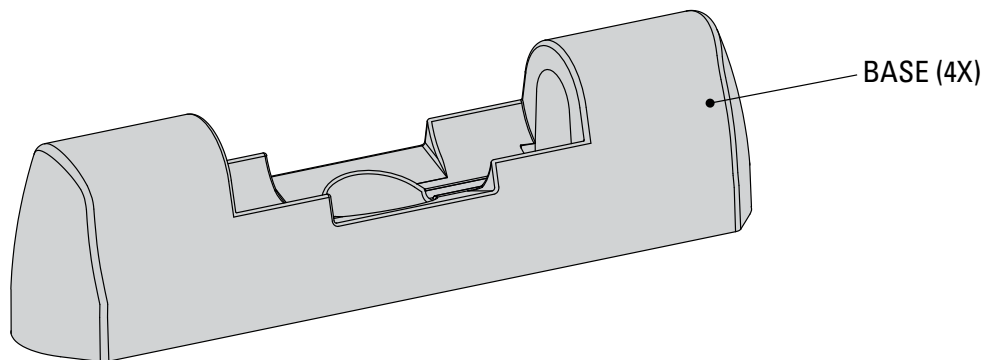


YAKIMA LandingPad 18



Note: Crossbar spread for this vehicle is fixed at 32 inches.



CHECK THAT FACTORY INSTALLED SPACERS ARE STILL IN PLACE. REPLACE IN THE EVENT THAT THEY CAME LOOSE DURING TRANSPORT.

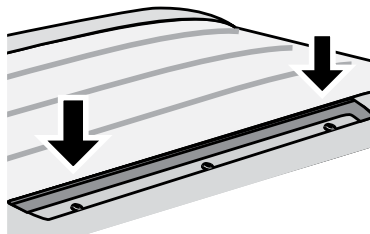
*Refer to YAKIMA Control Tower or SkyLine Tower instructions for important warning and load limitations, and YAKIMA's limited warranty.
Part #1035789 Rev.A*

1

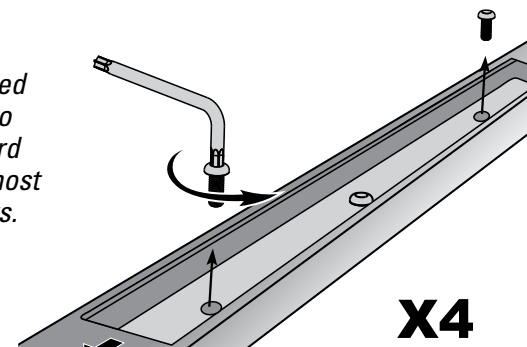
If your vehicle has factory crossbars, remove them now, then proceed to step 3.

2

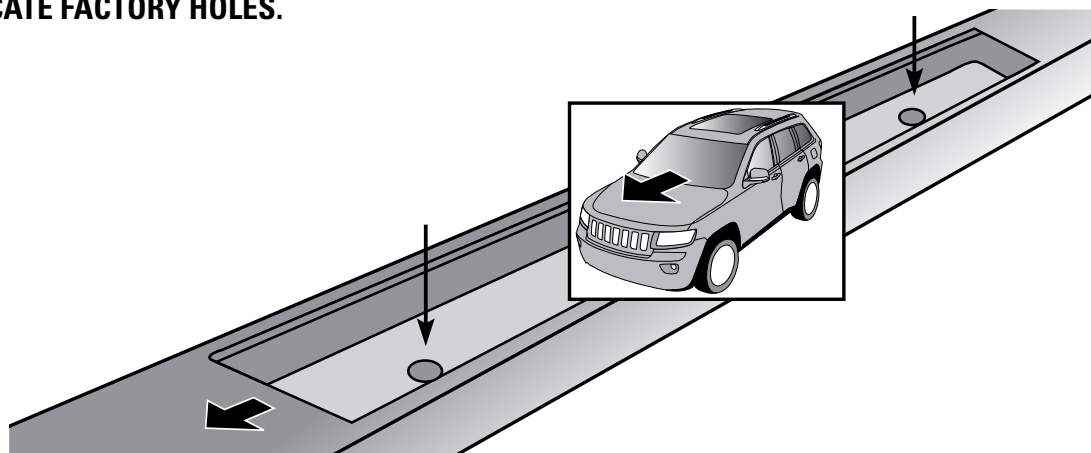
LOCATE FACTORY SCREWS WITHIN FACTORY TRACKS.



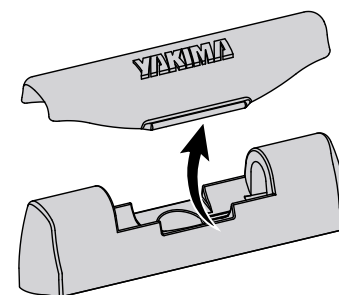
Use the provided torx wrench to remove forward most and rear most factory screws.

**3**

LOCATE FACTORY HOLES.

**4**

Remove the covers from the bases.

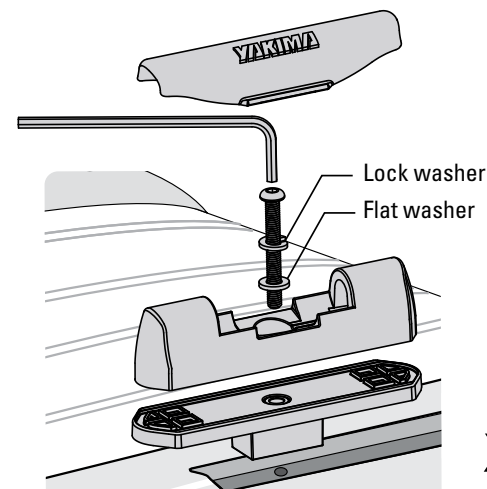


When the racks are not installed, use the covers to keep the bases free of debris.

5

COMBINE BASES, WITH SKIRTS, INSTALL INTO TRACK.

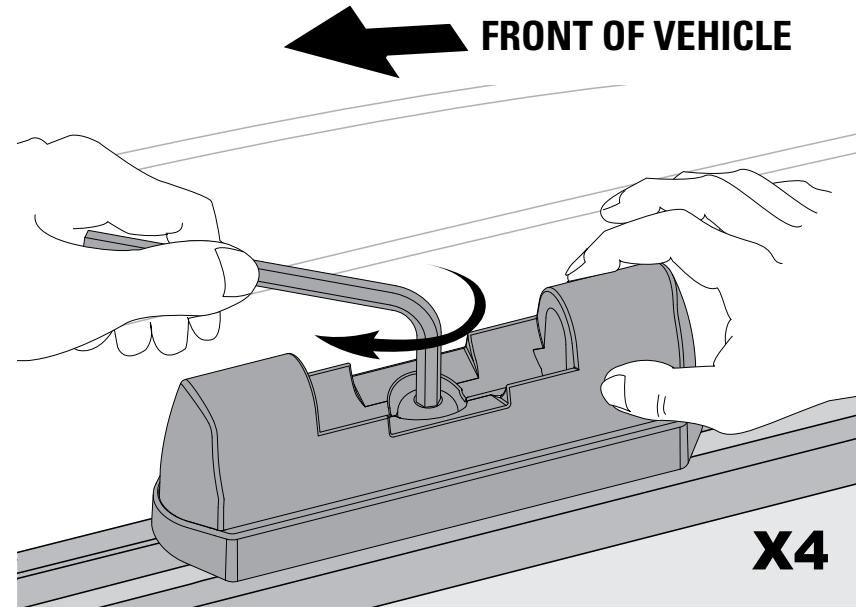
- Combine bases with skirts.
- Place lock washer on capscrew, then flat washer.



6 USING PROVIDED 4MM ALLEN WRENCH, TIGHTEN CAPSCREWS COMPLETELY.



Hand tighten until lock washer is seated and pad fits firmly into track. Tighten to final torque (30in-lbs or 3.4Nm).



7 READ THESE WARNINGS!



Be sure the towers, with bars installed, seat completely on the Landing Pad. If they do not seat properly, repeat step 6, making sure the base and skirt are aligned before re-tightening.



Be sure all hardware is secured according to instructions. Failure to perform safety checks before driving away can result in property damage, personal injury, or death.

Attachment hardware can loosen over time. Check and tighten if necessary, before each use.



- **DO NOT EXCEED WEIGHT LIMIT: 165 lbs. (75 kg)**
 - **Consult your YAKIMA dealer or fit list to see load limitations for accessories.**
- Remove your YAKIMA rack and accessories before entering automatic car washes.*

8 Continue with *Control Tower* or *SkyLine Tower* installation.