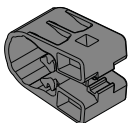


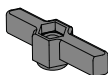
YAKIMA

Safety Pole

SNAR (1X)



HEX KEY (1X)



BOLT (1X)



SAFETY POLE (1X)

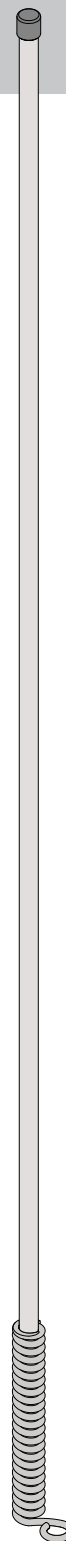
NUT (1X)



WASHER (1X)



T-BOLT (1X)



IMPORTANT WARNING

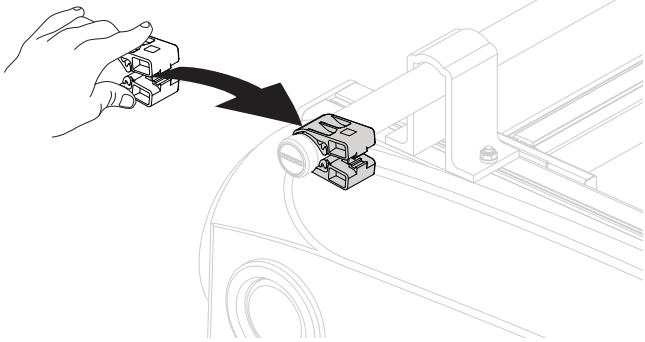
IT IS CRITICAL THAT ALL YAKIMA RACKS AND ACCESSORIES BE PROPERLY AND SECURELY ATTACHED TO YOUR VEHICLE. IMPROPER ATTACHMENT COULD RESULT IN AN AUTOMOBILE ACCIDENT, AND COULD CAUSE SERIOUS BODILY INJURY OR DEATH TO YOU OR TO OTHERS. YOU ARE RESPONSIBLE FOR SECURING THE RACKS AND ACCESSORIES TO YOUR CAR, CHECKING THE ATTACHMENTS PRIOR TO USE, AND PERIODICALLY INSPECTING THE PRODUCTS FOR ADJUSTMENT, WEAR, AND DAMAGE. THEREFORE, YOU MUST READ AND UNDERSTAND ALL OF THE INSTRUCTIONS AND CAUTIONS SUPPLIED WITH YOUR YAKIMA PRODUCT PRIOR TO INSTALLATION OR USE. IF YOU DO NOT UNDERSTAND ALL OF THE INSTRUCTIONS AND CAUTIONS, OR IF YOU HAVE NO MECHANICAL EXPERIENCE AND ARE NOT THOROUGHLY FAMILIAR WITH THE INSTALLATION PROCEDURES, YOU SHOULD HAVE THE PRODUCT INSTALLED BY A PROFESSIONAL INSTALLER.

OPTION A

- Install on the right rear crossbar.
- Install as far outboard as possible.

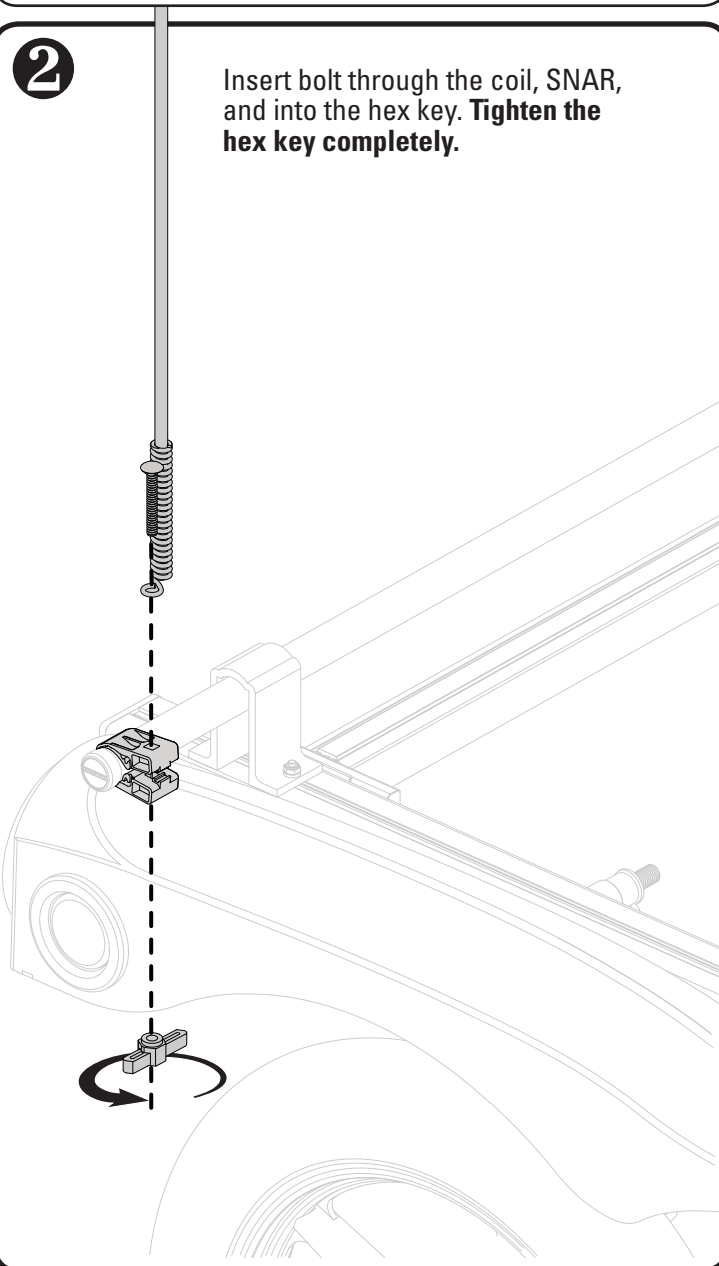
1

Put the SNAR (snap around) around the crossbar as shown.



2

Insert bolt through the coil, SNAR, and into the hex key. **Tighten the hex key completely.**

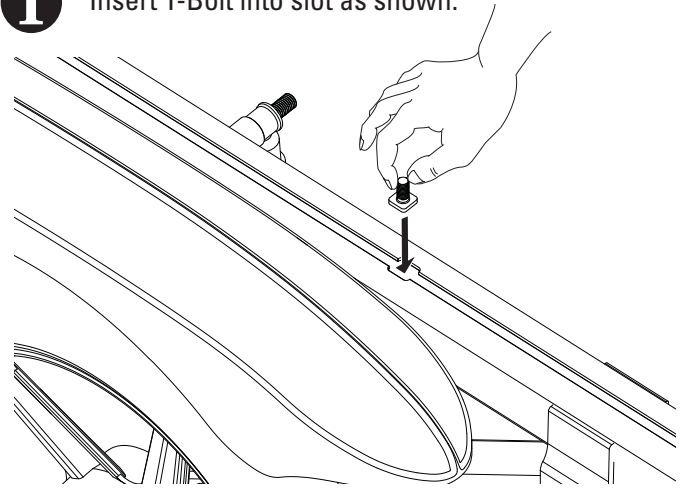


OPTION B

- Install on the right side of trailer.

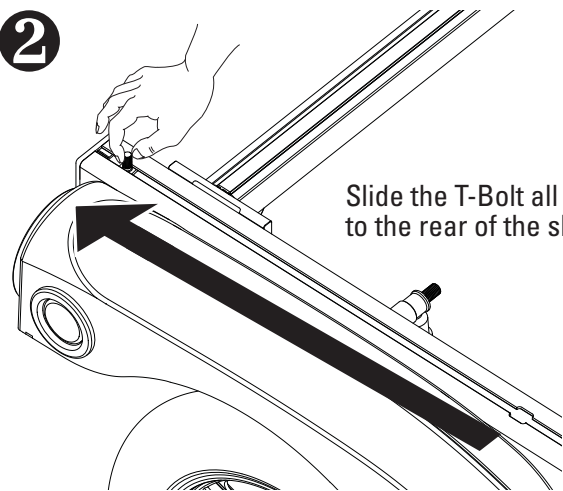
1

Insert T-Bolt into slot as shown.



2

Slide the T-Bolt all the way to the rear of the slot.



3

Put coil, washer, and nut onto T-Bolt, and tighten firmly with wrench.

