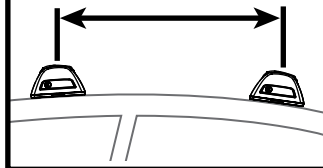


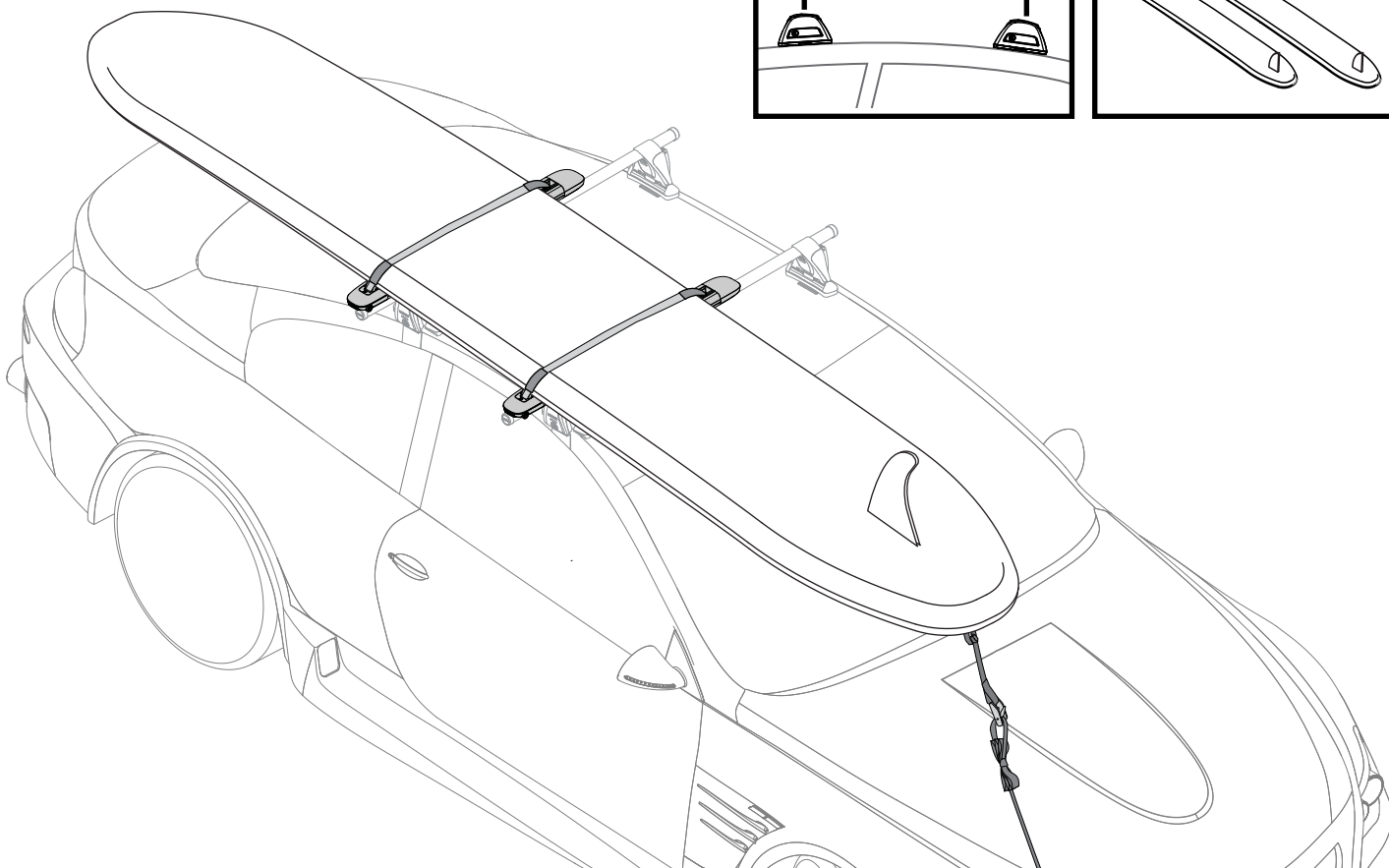
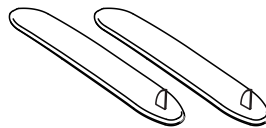
YAKIMA

SUPDawg

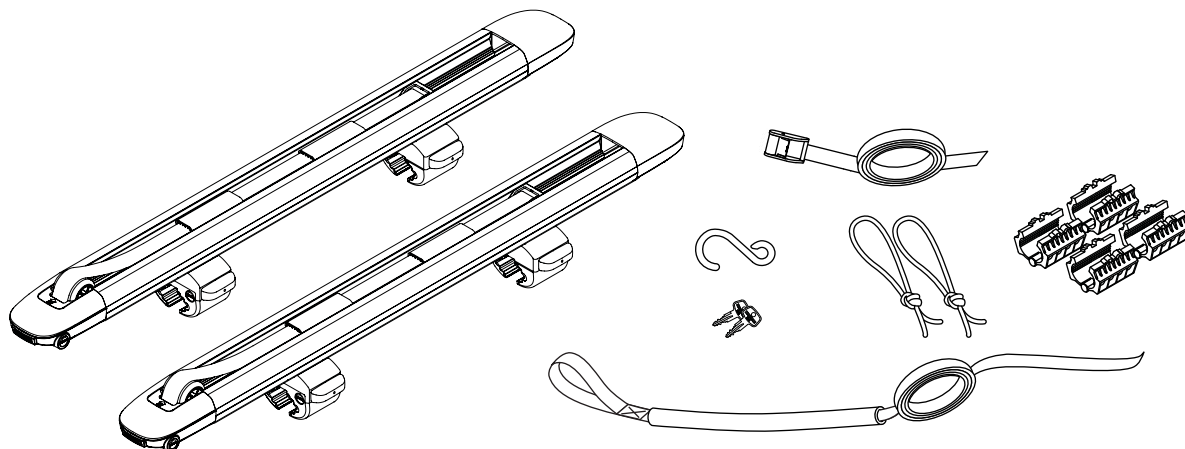
61 cm / 24" Min.



30 kg / 66 lbs. Max.

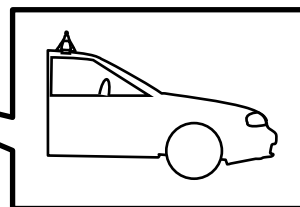
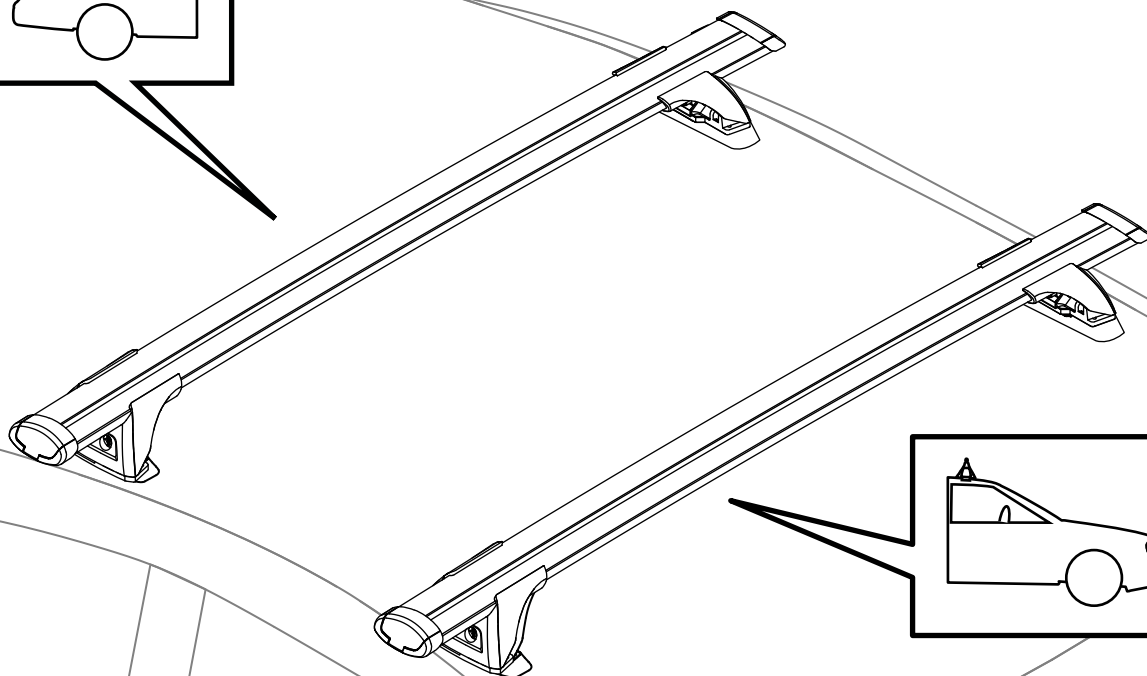
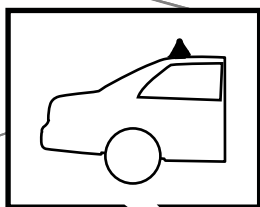


CONTENTS

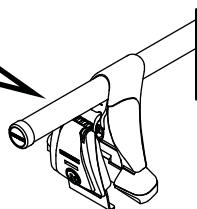
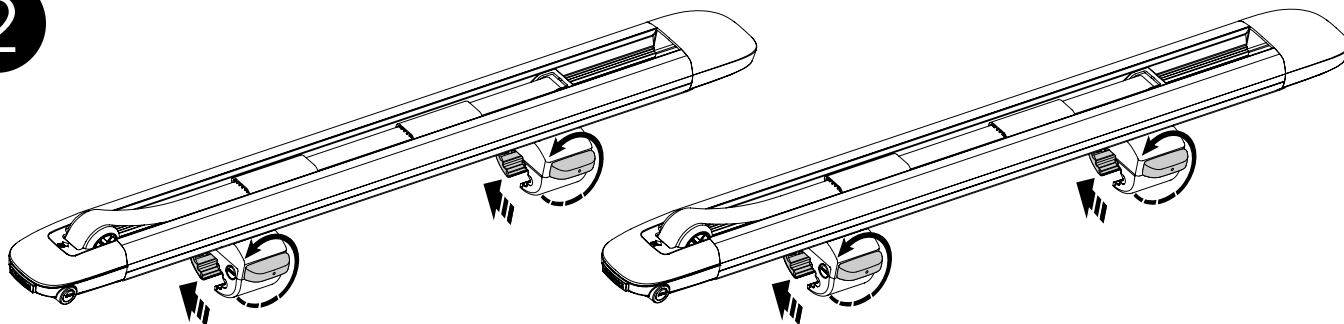


INSTALLATION

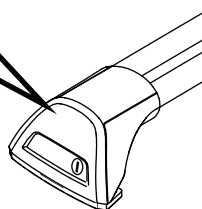
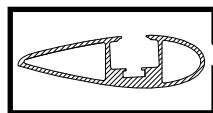
1



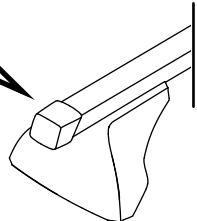
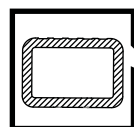
2



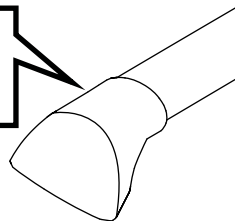
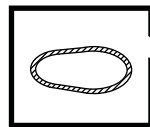
A



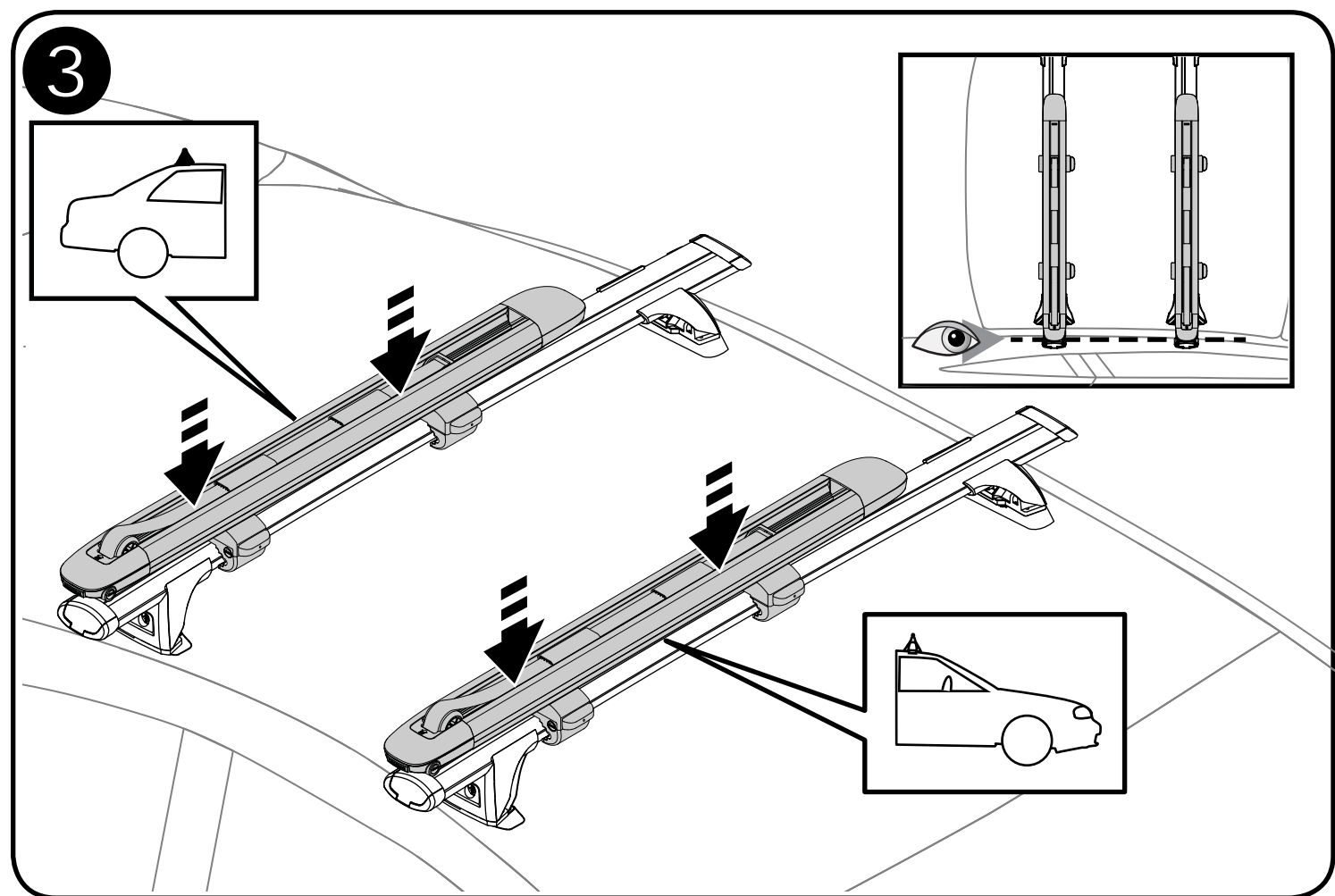
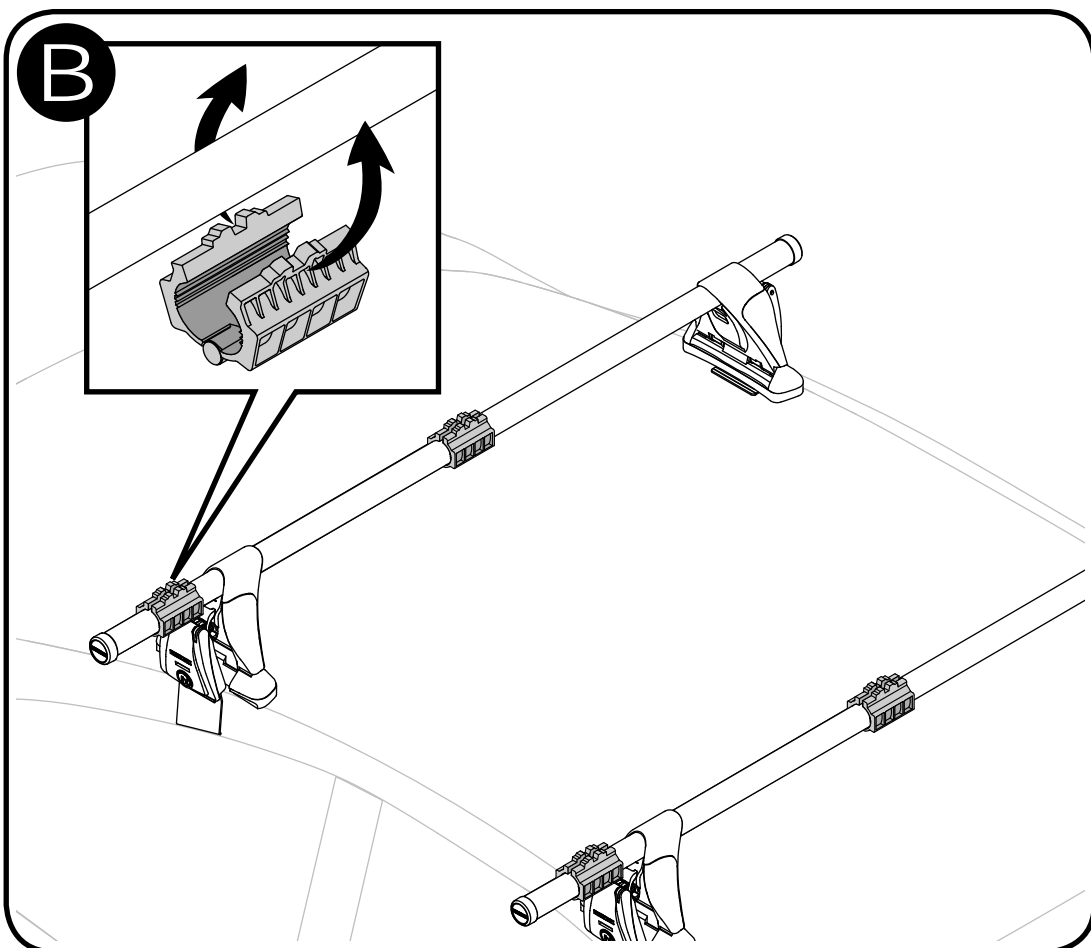
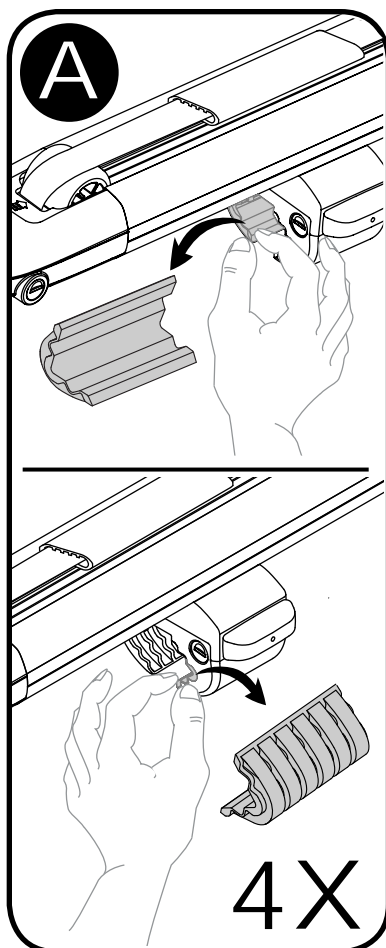
3

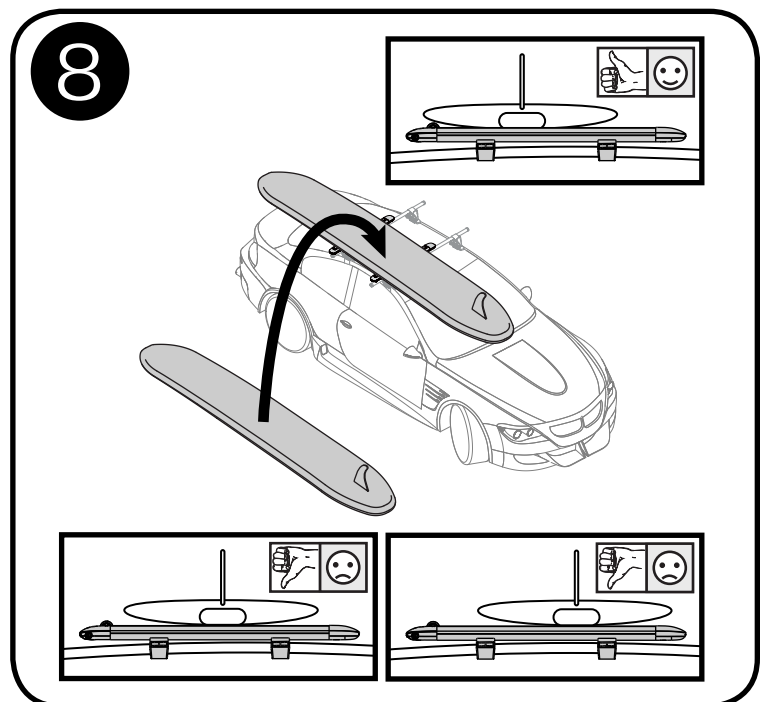
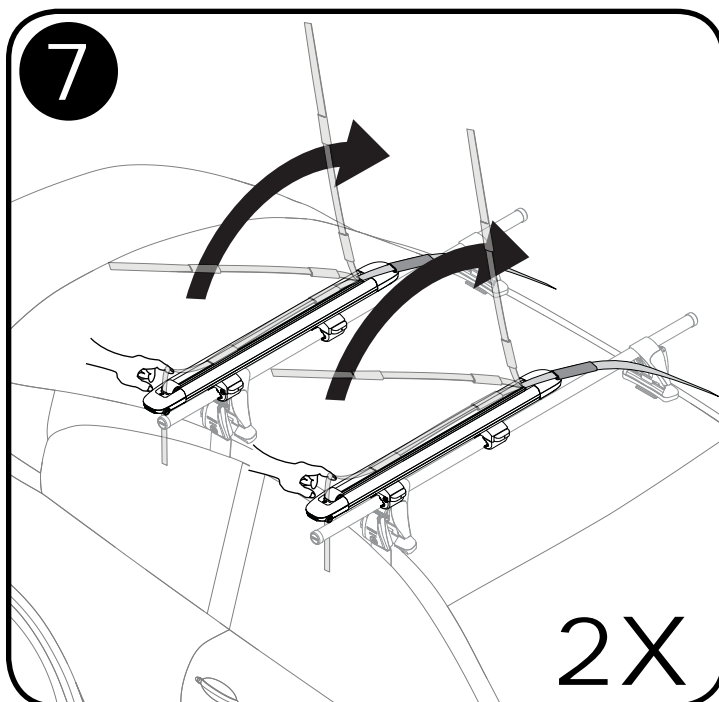
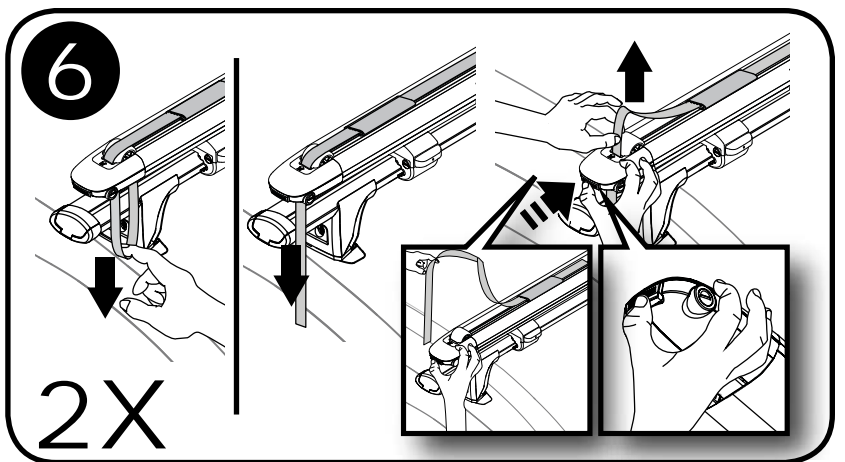
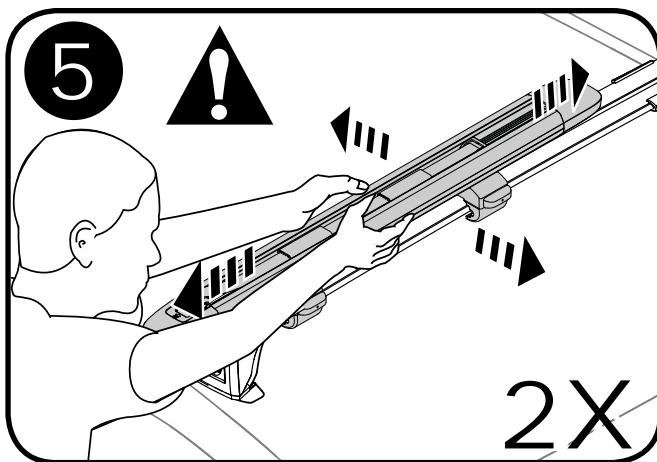
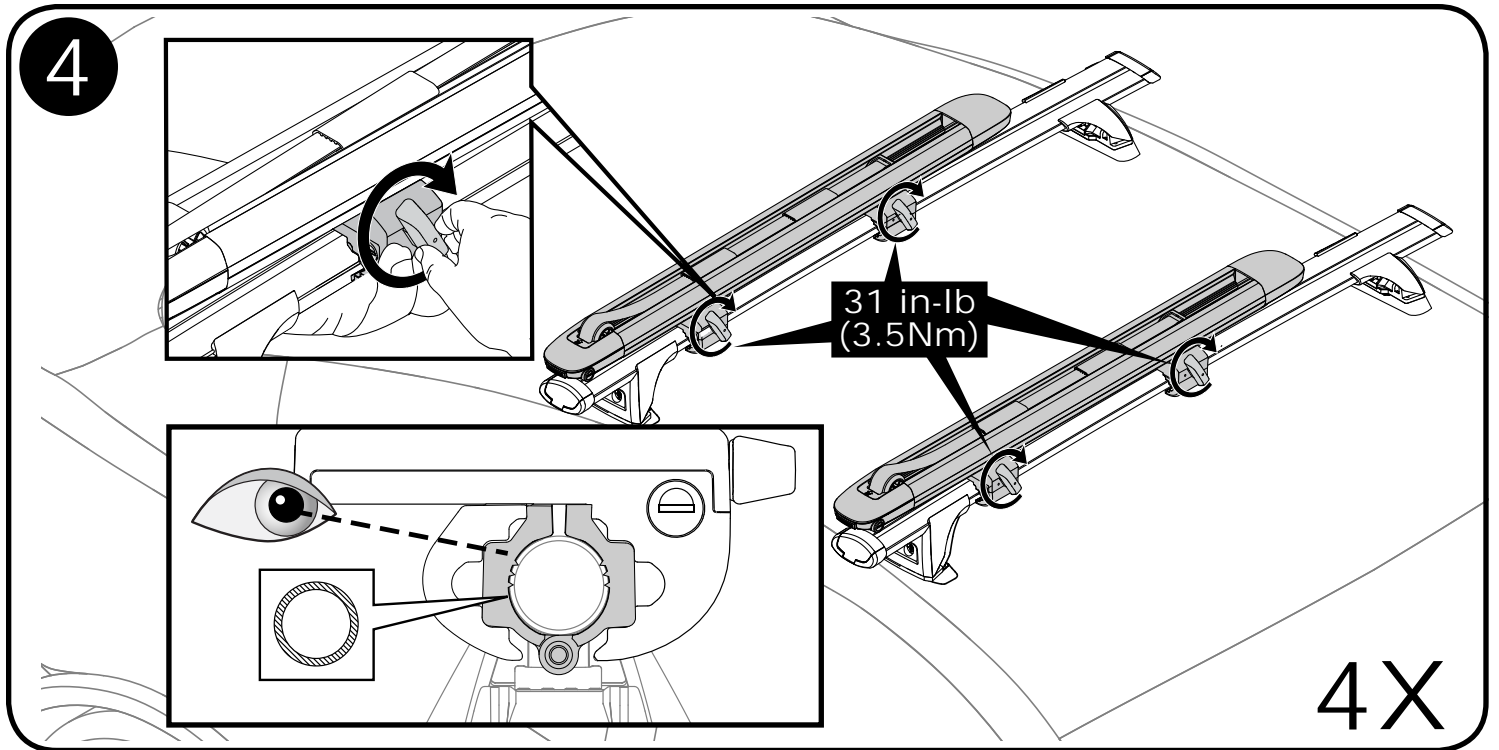


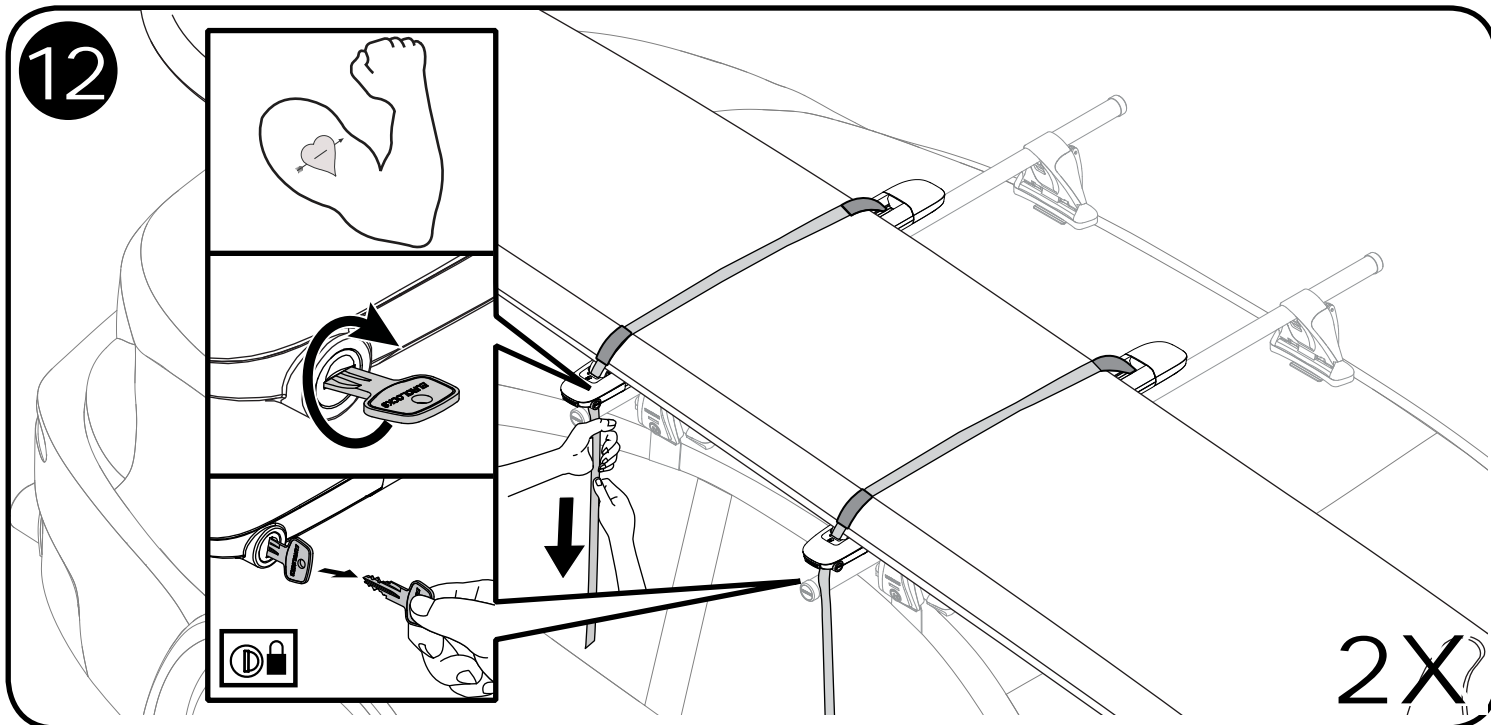
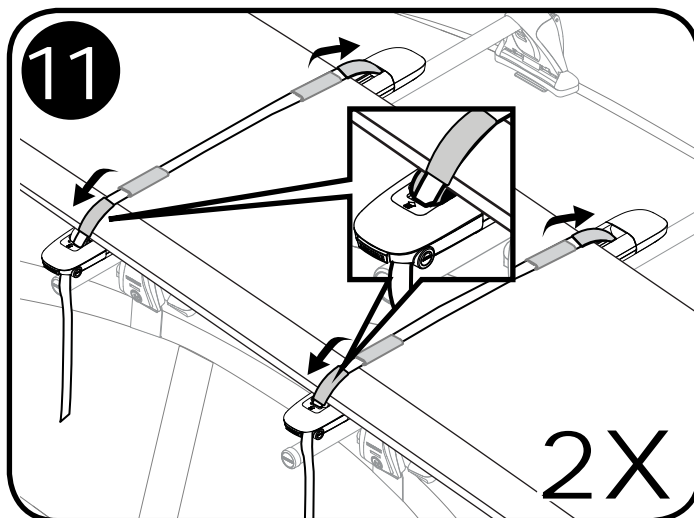
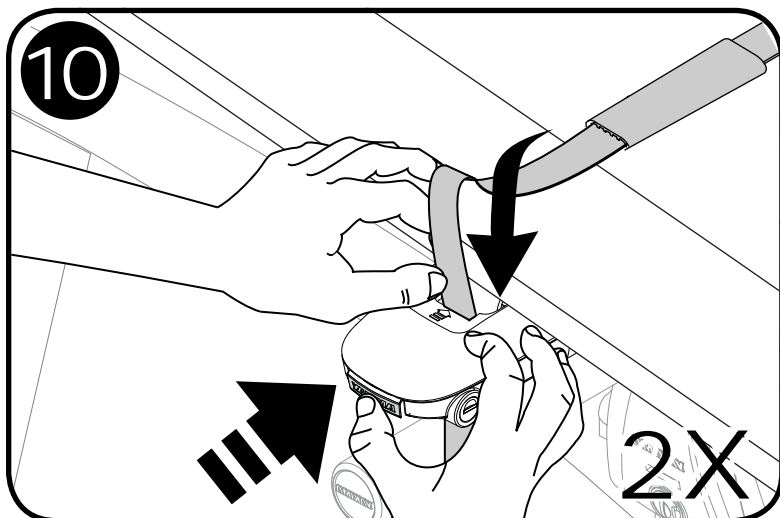
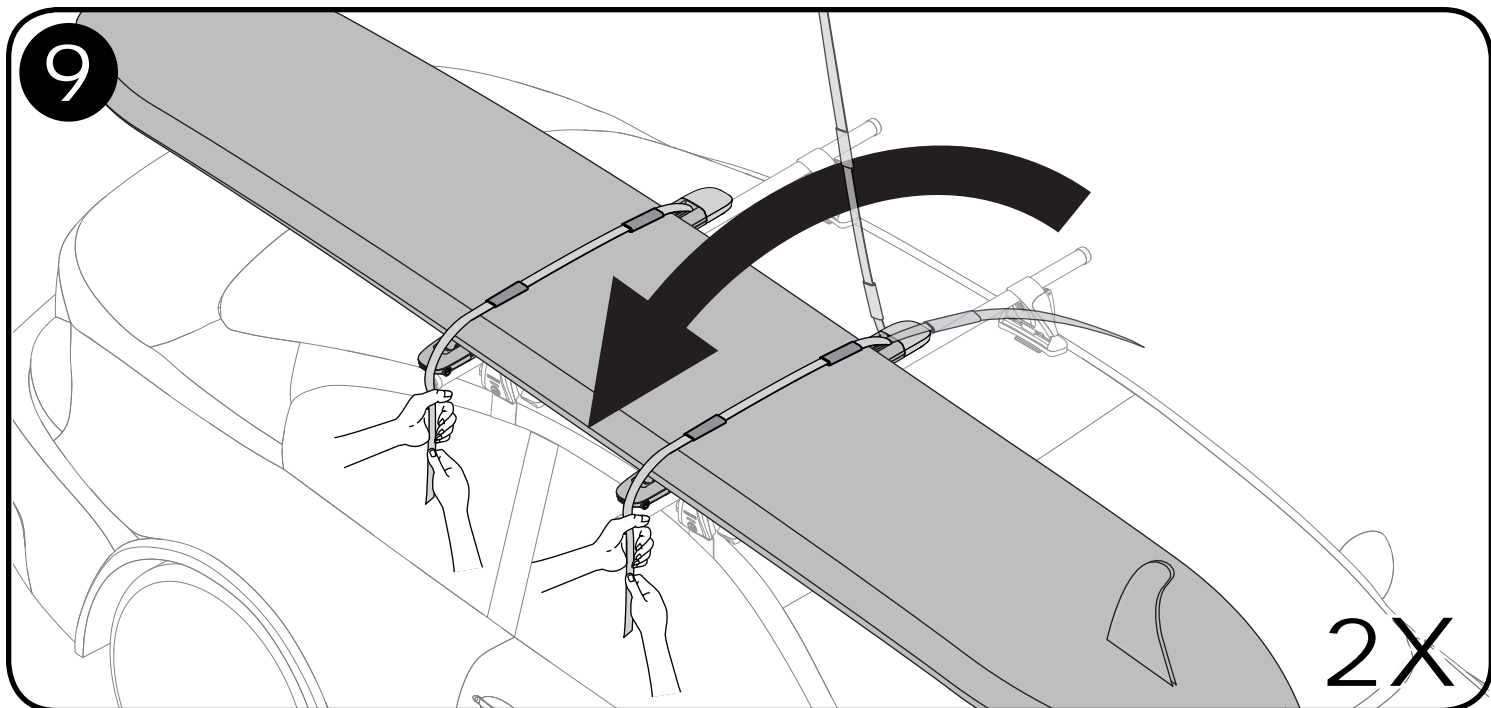
3



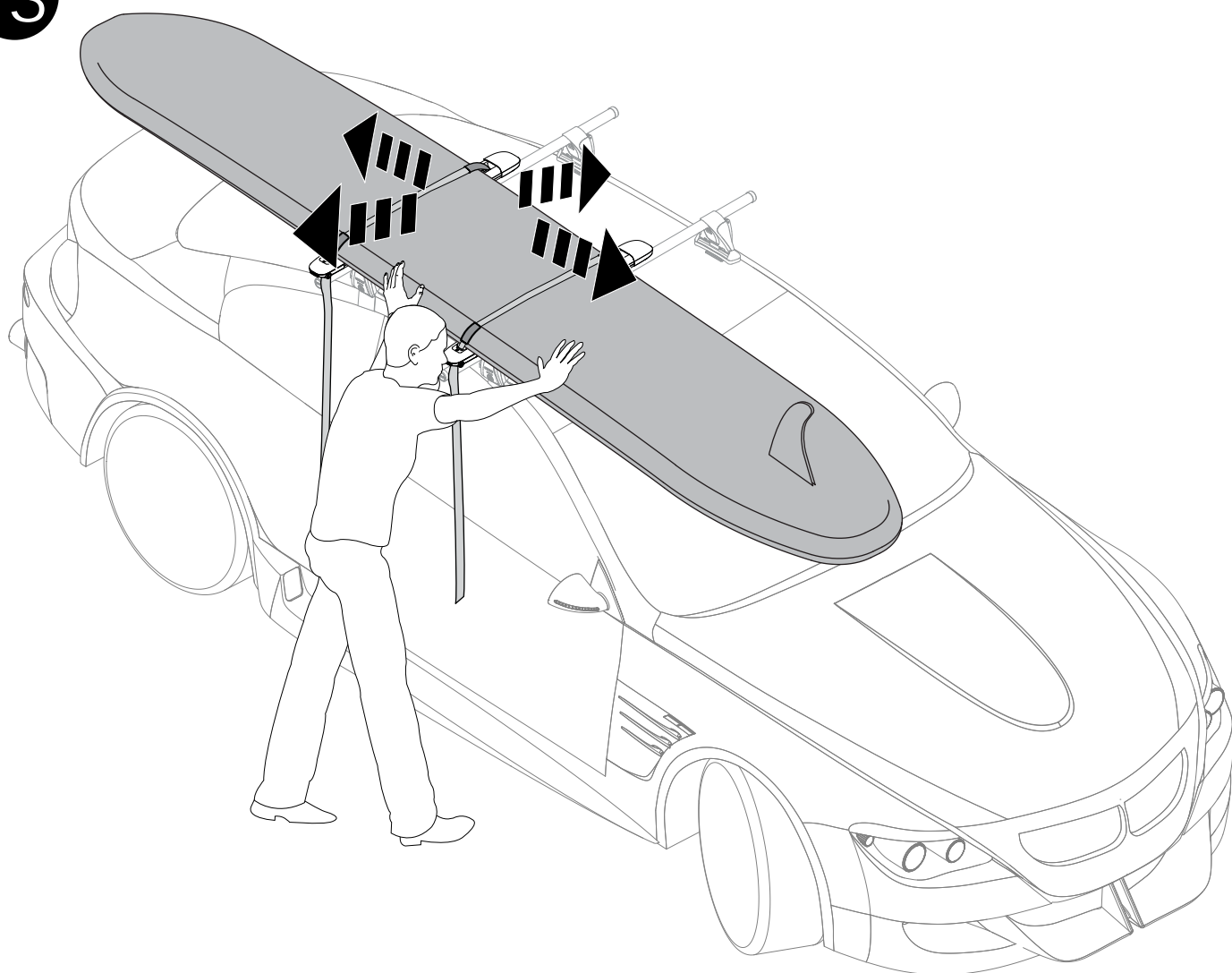
3



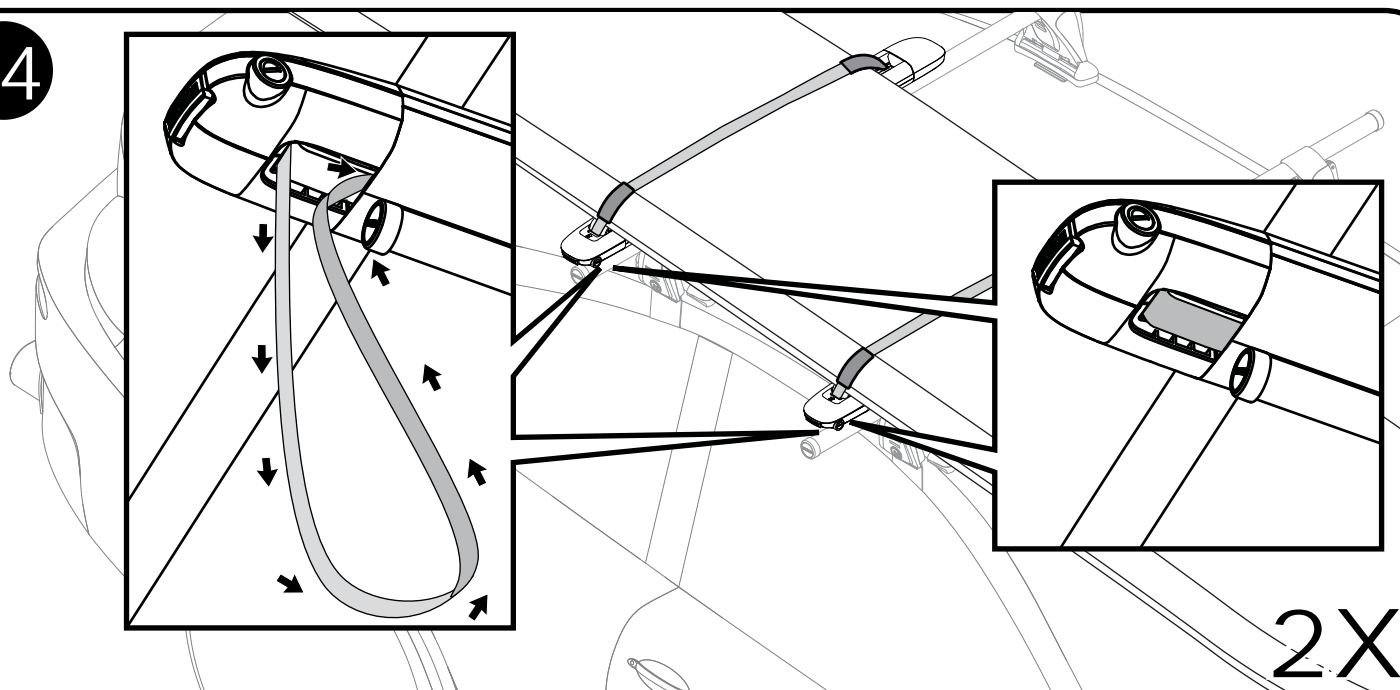


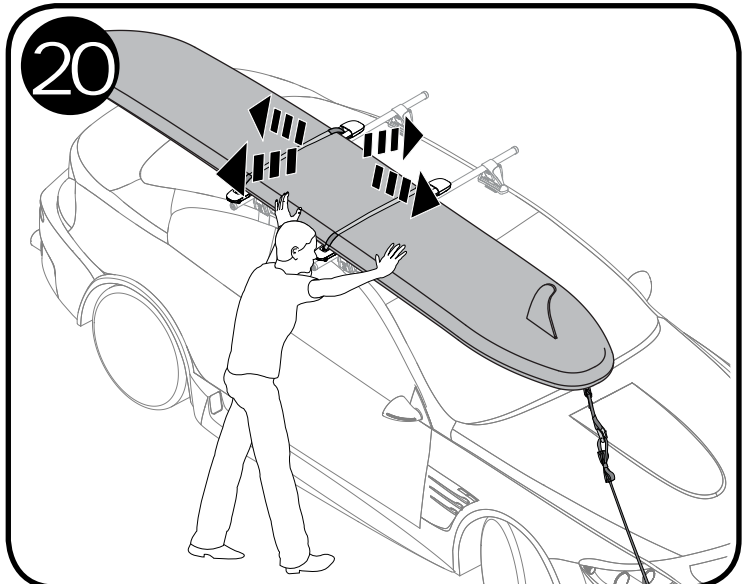
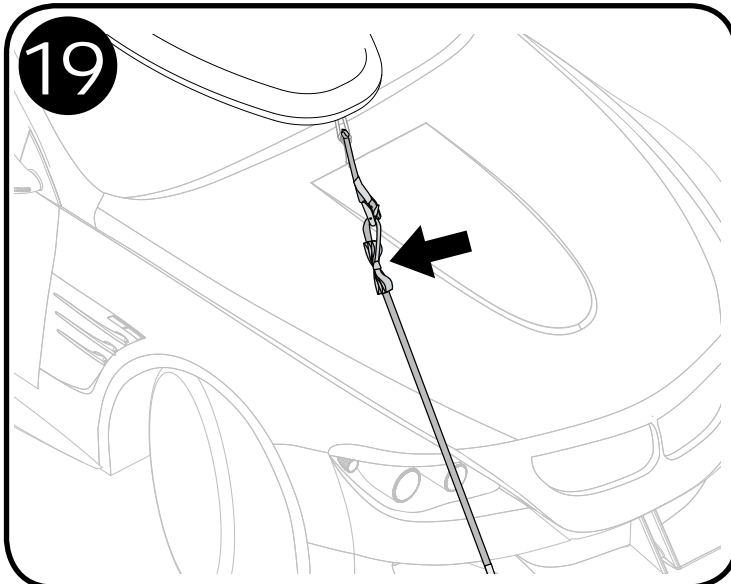
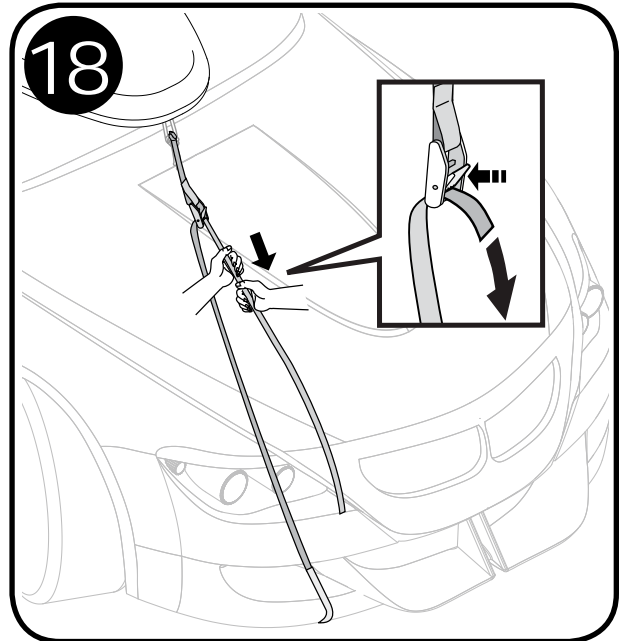
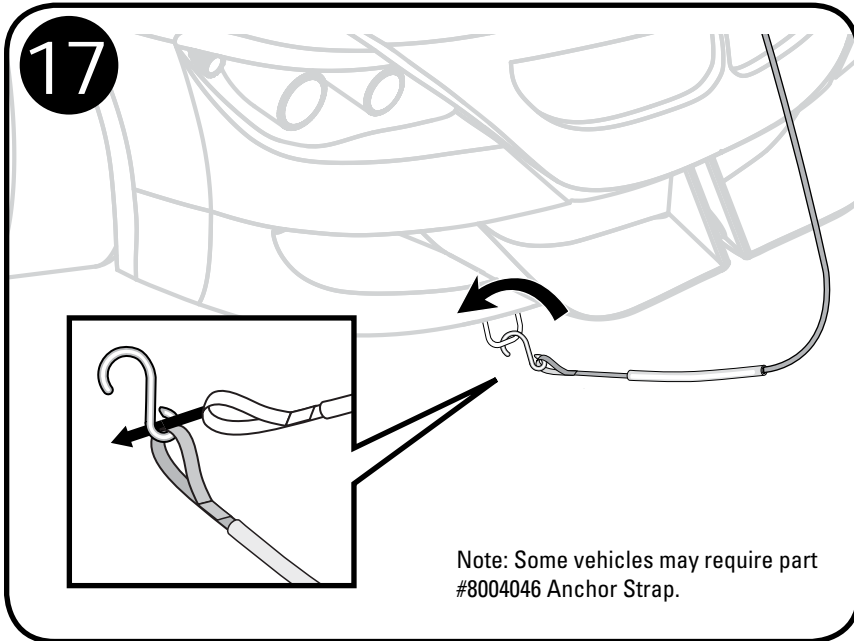
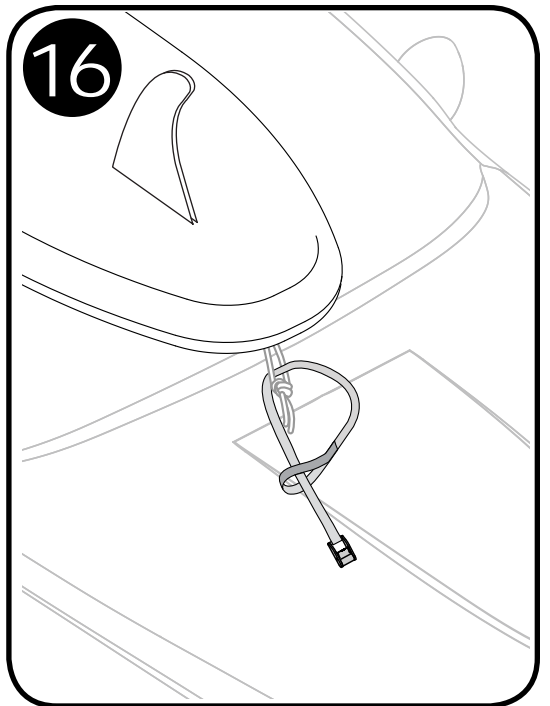
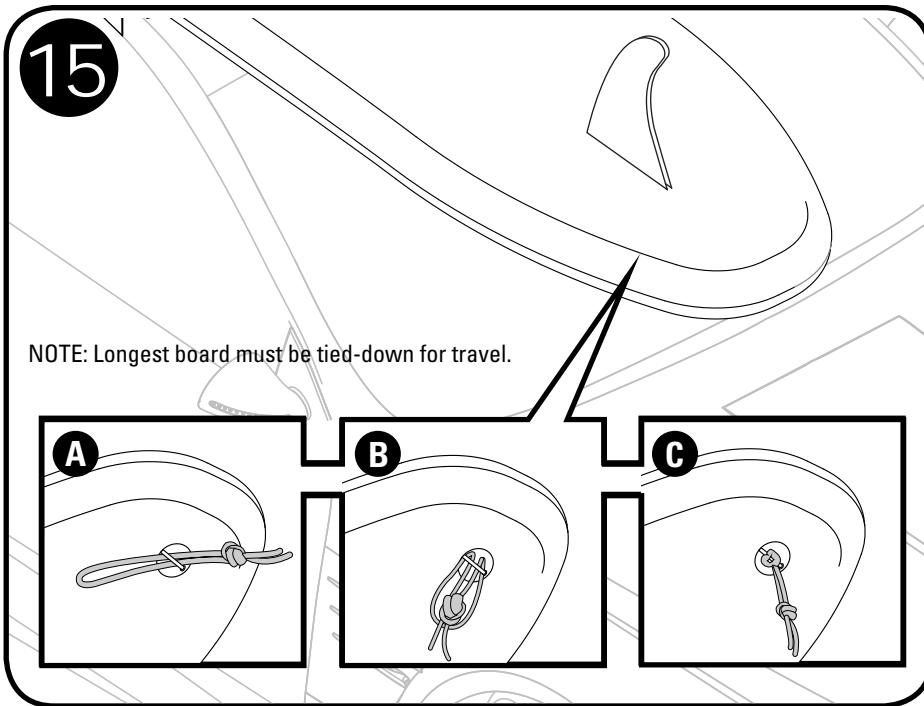


13



14



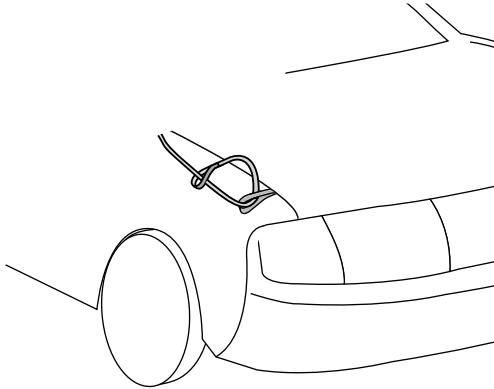


PURCHASE SEPARATELY

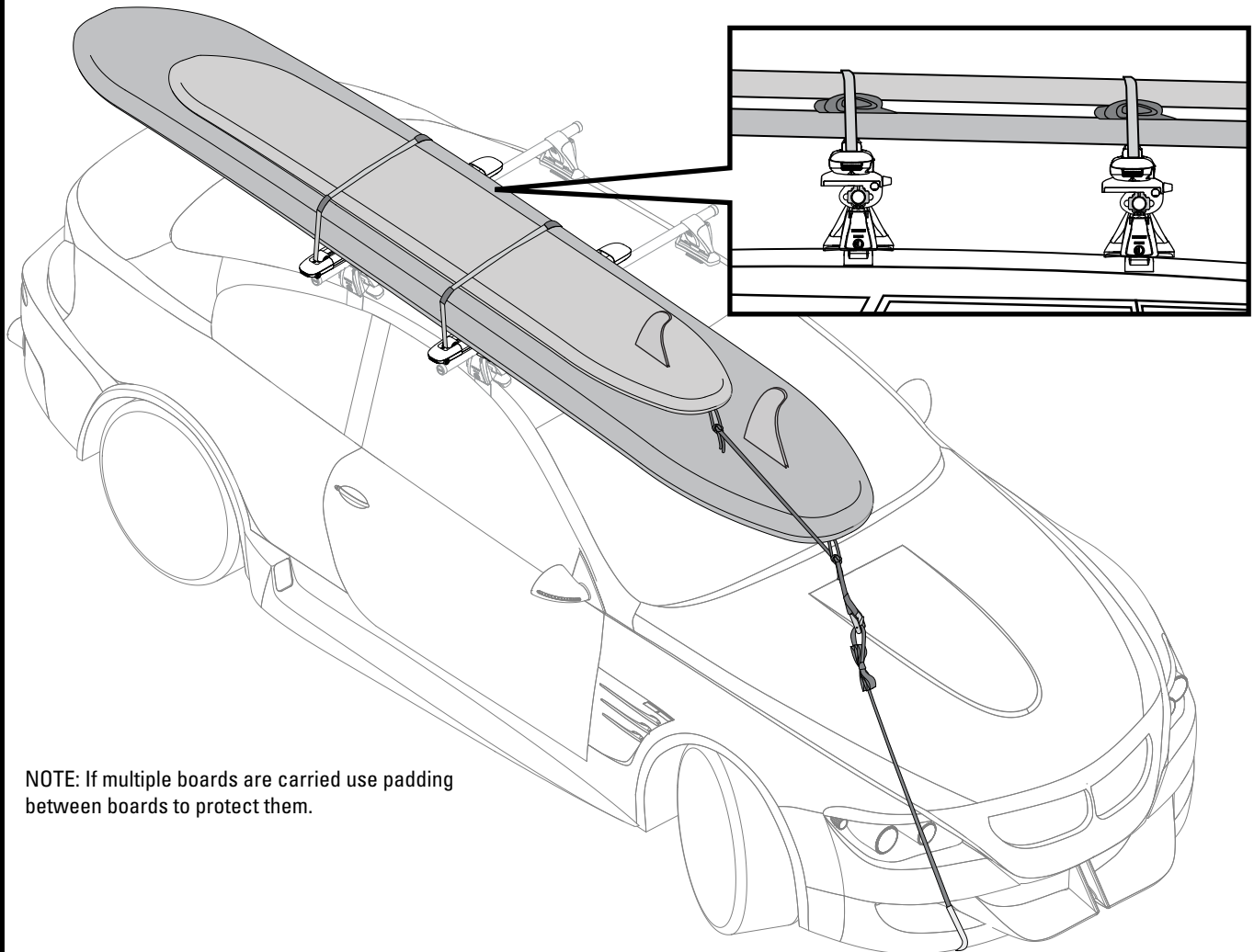
ANCHOR STRAP

Anchor Strap

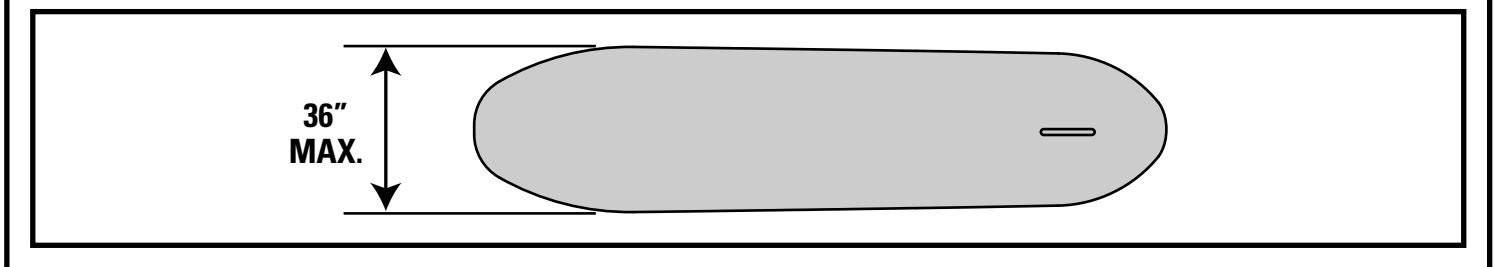
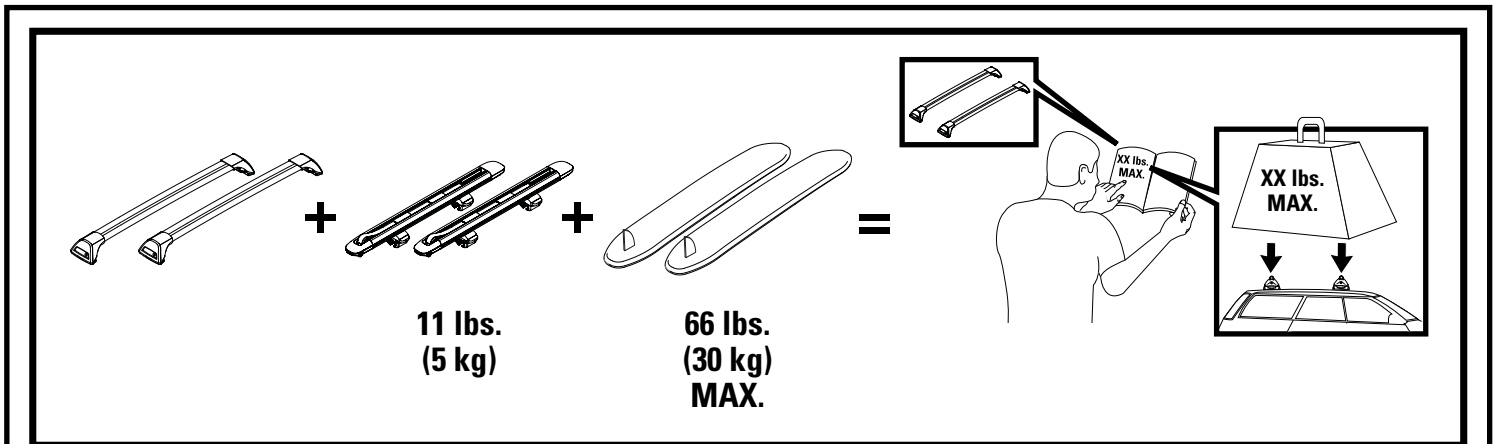
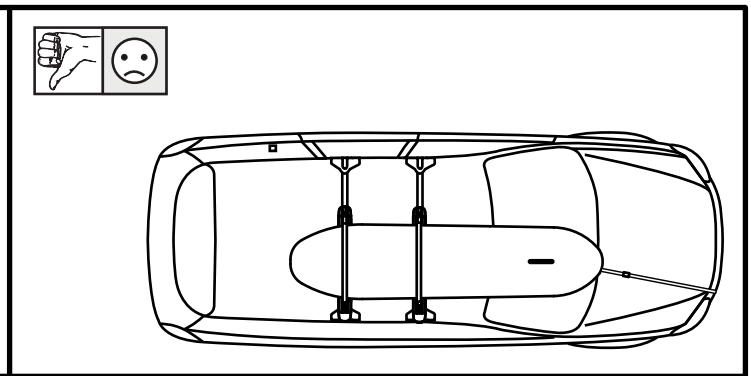
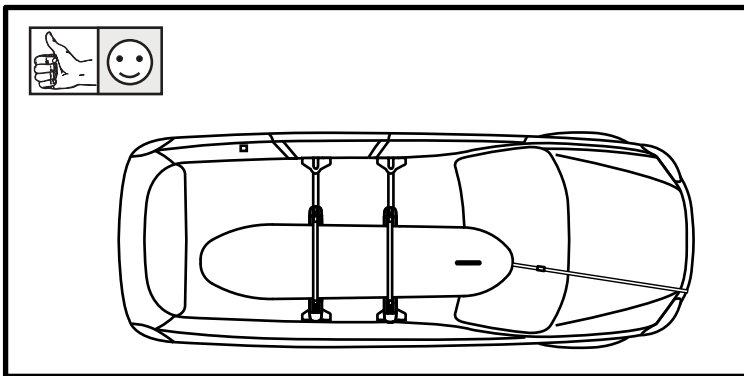
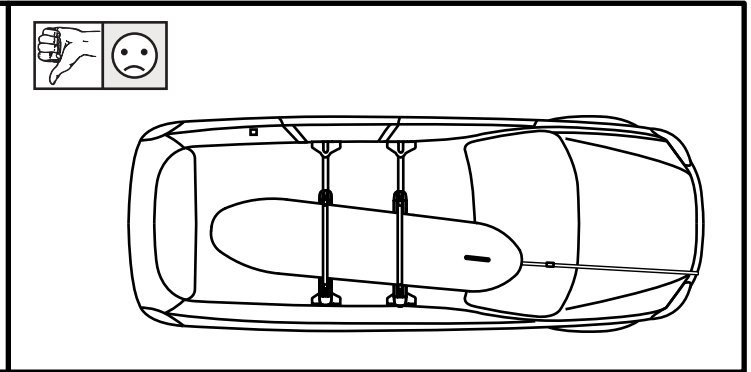
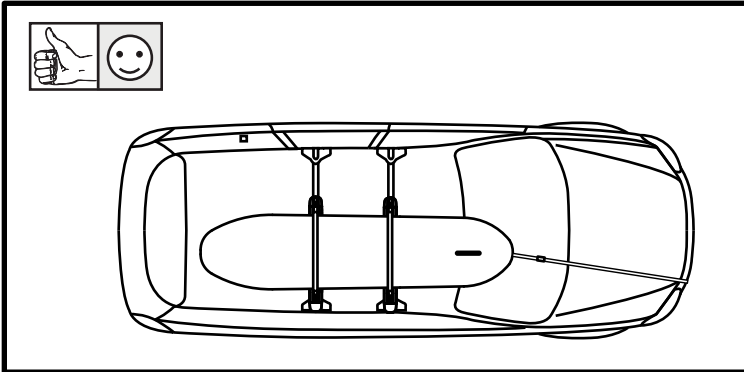
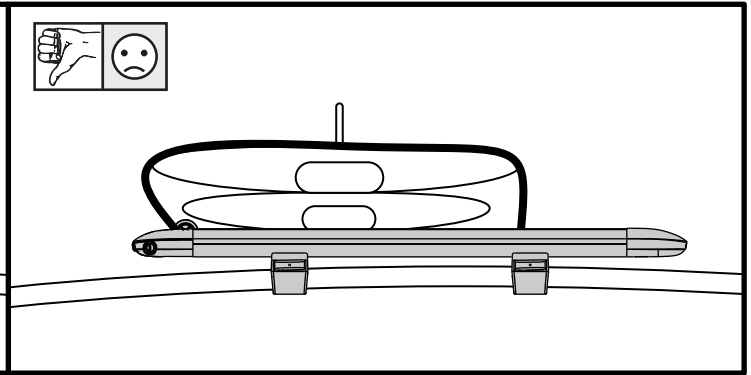
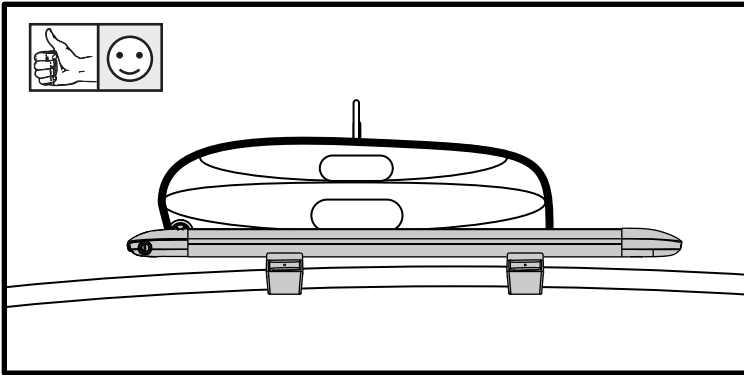
Creates two mounting points for bow/stern tie-downs
Part #8004046

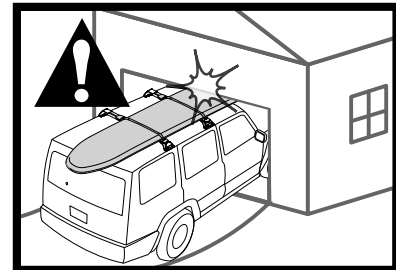
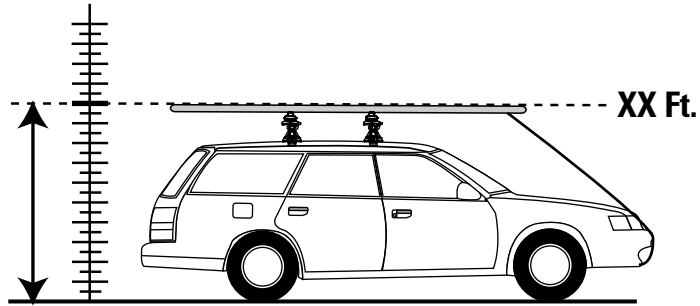
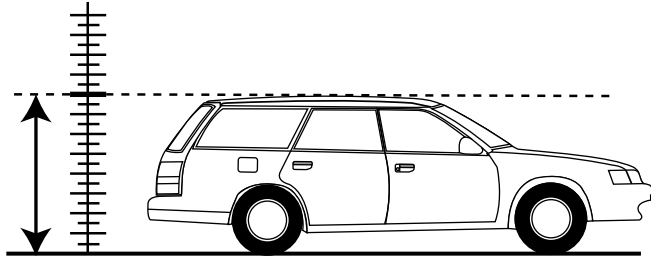


2 SUPs

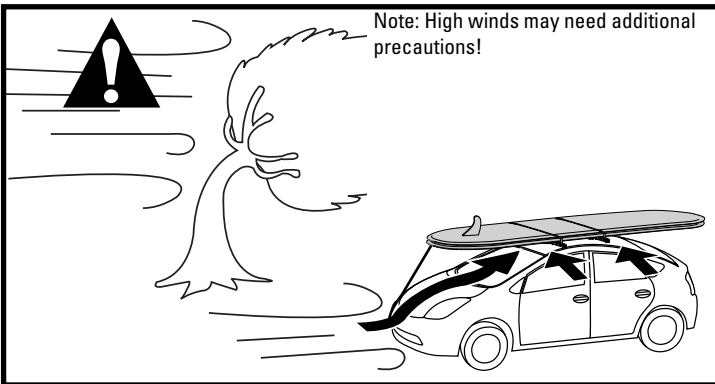
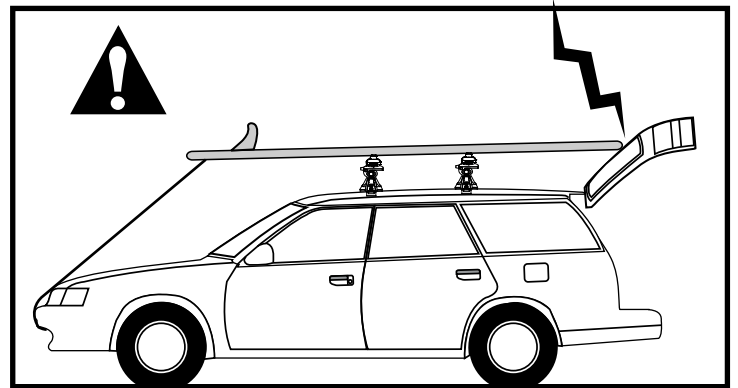
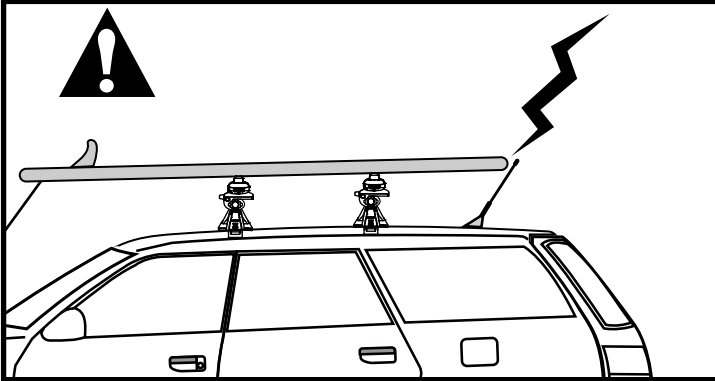
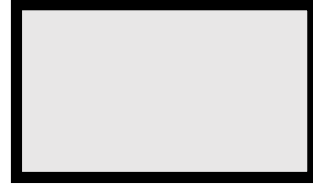


NOTE: If multiple boards are carried use padding between boards to protect them.





Record Height Here.



Note: High winds may need additional precautions!

