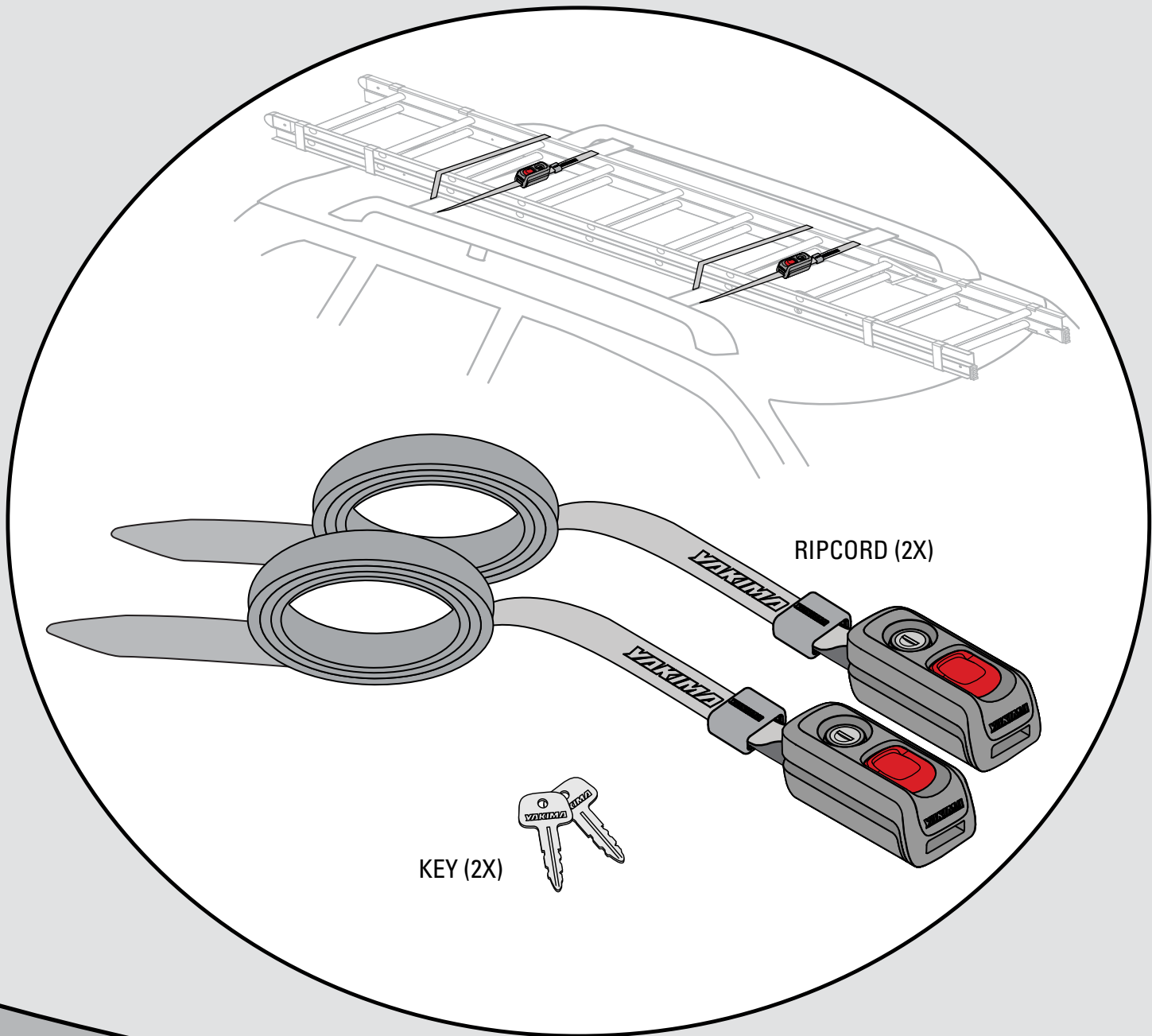


YAKIMA

RipCord



IMPORTANT WARNING

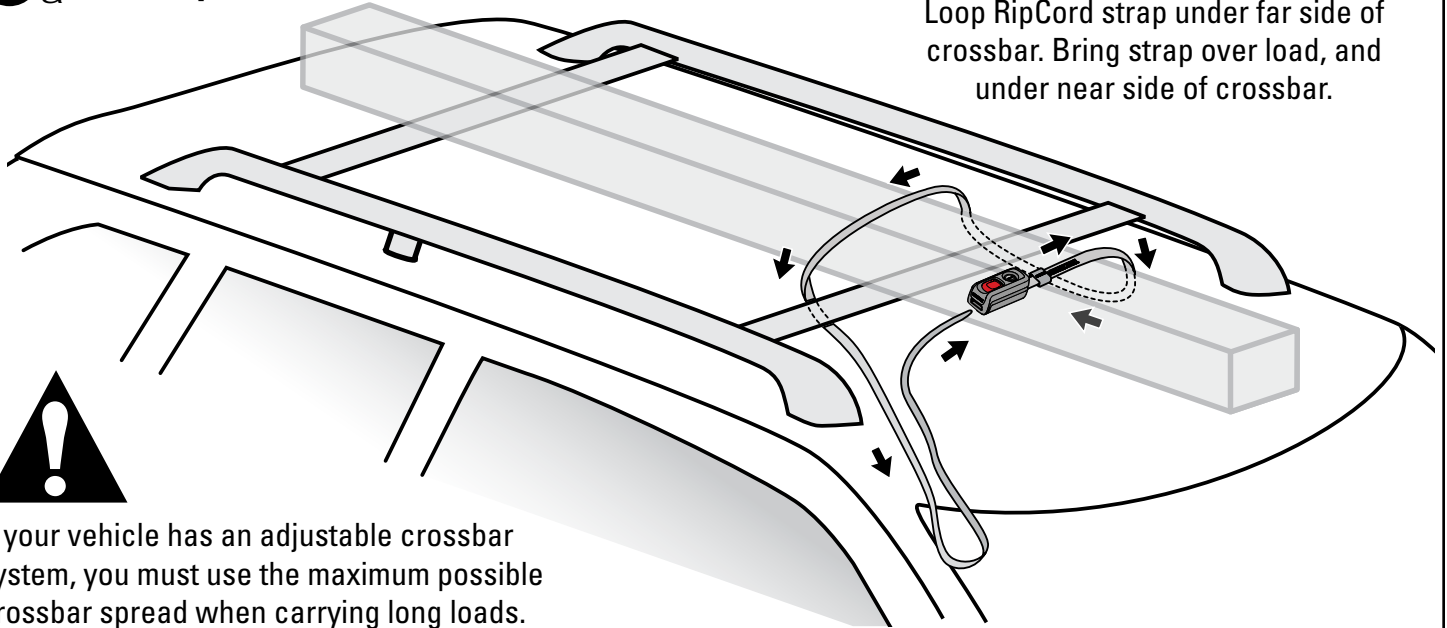
IT IS CRITICAL THAT ALL [YAKIMA RACKS AND ACCESSORIES](#) BE PROPERLY AND SECURELY ATTACHED TO YOUR VEHICLE. IMPROPER ATTACHMENT COULD RESULT IN AN AUTOMOBILE ACCIDENT, AND COULD CAUSE SERIOUS BODILY INJURY OR DEATH TO YOU OR TO OTHERS. YOU ARE RESPONSIBLE FOR SECURING THE RACKS AND ACCESSORIES TO YOUR CAR, CHECKING THE ATTACHMENTS PRIOR TO USE, AND PERIODICALLY INSPECTING THE PRODUCTS FOR ADJUSTMENT, WEAR, AND DAMAGE. THEREFORE, YOU MUST READ AND UNDERSTAND ALL OF THE INSTRUCTIONS AND CAUTIONS SUPPLIED WITH YOUR YAKIMA PRODUCT PRIOR TO INSTALLATION OR USE. IF YOU DO NOT UNDERSTAND ALL OF THE INSTRUCTIONS AND CAUTIONS, OR IF YOU HAVE NO MECHANICAL EXPERIENCE AND ARE NOT THOROUGHLY FAMILIAR WITH THE INSTALLATION PROCEDURES, YOU SHOULD HAVE THE PRODUCT INSTALLED BY A PROFESSIONAL INSTALLER.

1_a **Basic operation:**

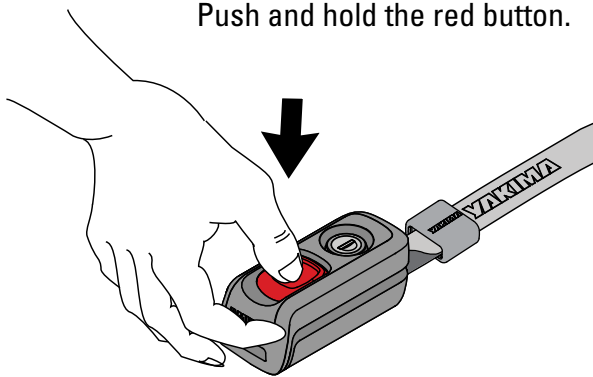
Loop RipCord strap under far side of crossbar. Bring strap over load, and under near side of crossbar.



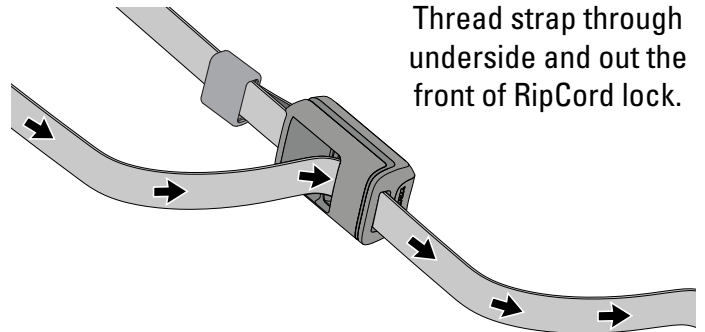
If your vehicle has an adjustable crossbar system, you must use the maximum possible crossbar spread when carrying long loads. Do not move your Q-Towers!



Push and hold the red button.

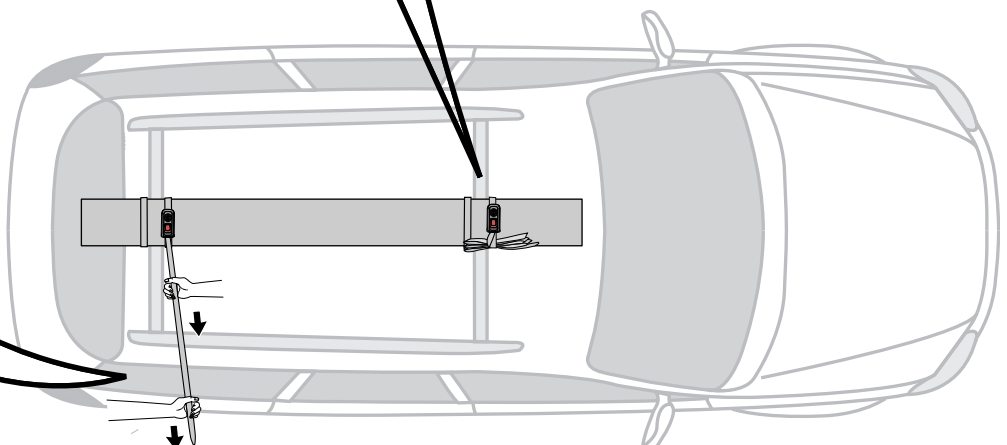
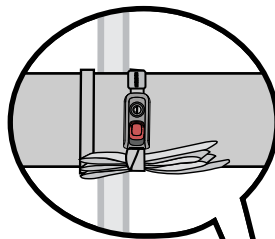
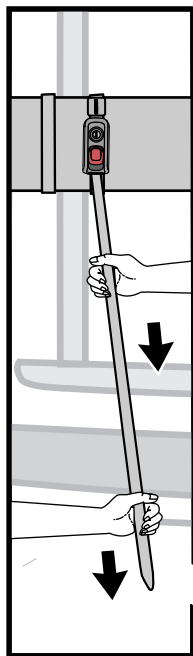


Thread strap through underside and out the front of RipCord lock.



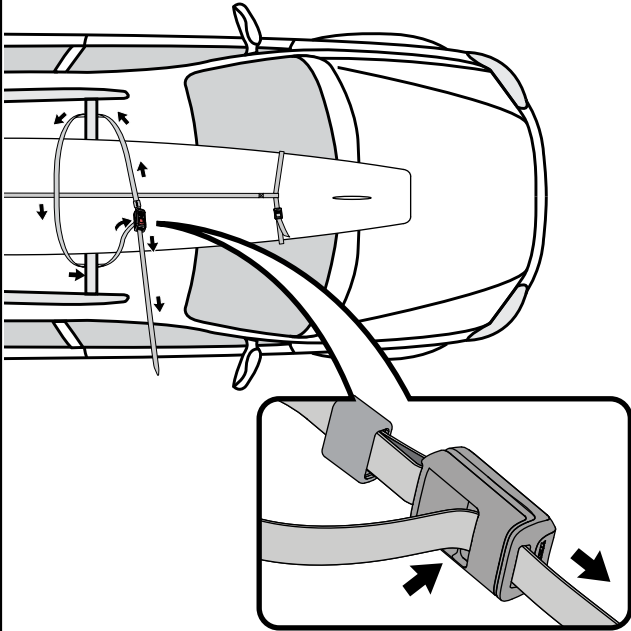
Pull strap end to tighten Ripcord down. Gather extra strap and secure it.

Install second rip cord.



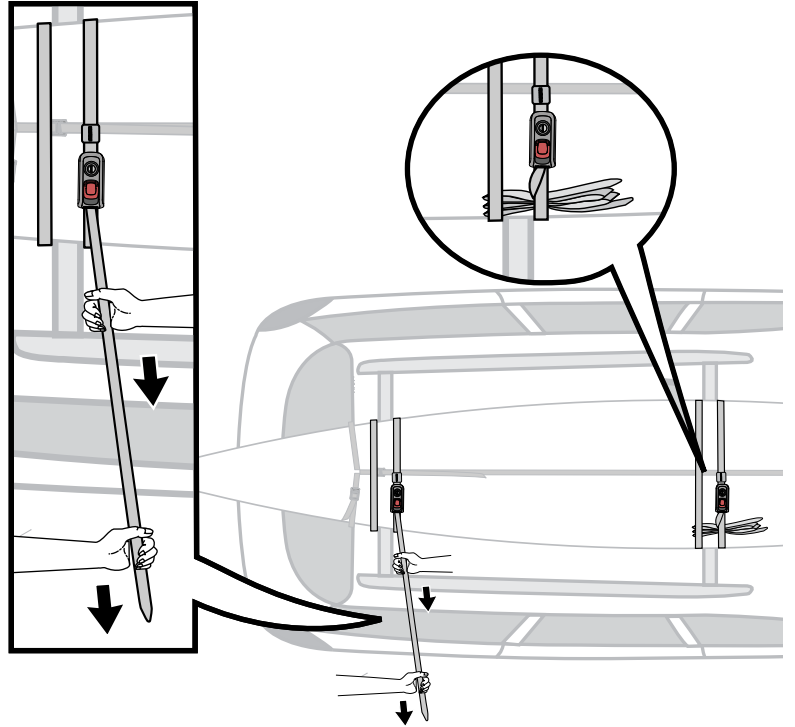
1_b To carry a surfboard(s):

Loop RipCord strap under far side of crossbar. Bring strap over board, and under near side of crossbar.



Push and hold button, then thread strap through underside, and out the front of RipCord lock.

Pull strap end to tighten RipCord down. Gather extra strap and secure it.



If you have loaded multiple boards RipCord is to be installed around all boards.

2 Lock both RipCords.

