

XO LUXURY WHEELS

2017



Find Perfection Inside...

XO LUXURY

==== LUXURIOUSLY INSPIRING | INNOVATIVELY HIGH-END ====

XO Luxury Wheels is a division of Good Roads Auto Systems in Fort Lauderdale, Florida, a family-owned and operated company since 1982. XO Luxury Wheels is the top exclusive luxury brand for today's sophisticated consumer. XO Luxury Wheels is backed by a long heritage of expertise in trend-oriented designs and state-of-the-art innovation.

The XO brand carries 19" through 22" vehicle-specific staggered fitments with multiple concave wheel designs that fit vehicle offset ranges from +15 all the way up to +73 on select designs. XO Luxury Wheels uniquely offers a variety of wheels with replaceable stainless steel lips that are available in four different finishes or can be custom painted.



CONTENTS

- 6 ONE-PIECE CAST Wheel Collection
- 8 SPIN FORGED Wheel Collection
- 10 AMERICAN MUSCLE Vehicle Gallery
- 28 ELECTRIC + HYBRID Vehicle Gallery
- 32 EXOTICS + EUROPEAN Vehicle Gallery
- 64 JAPANESE Vehicle Gallery
- 80 DESIGN + WARRANTY USA Designed
- 81 FITMENT GUIDE Standard & Custom
- 82 ONLINE STORE Clothing/Accessories
- 83 STAY CONNECTED Social Media/Contact





VERONA

XO Luxury Wheels stays on the forefront of trending styles with the XO Verona wheel. If you've been searching for a wheel that is a perfect representation of precise engineering made to the strictest standards, look no further than the XO Verona.



FEATURED VEHICLE PAGES:

Pages: 10 • 11 • 15-21 • 25 • 34 • 38-41 • 44 • 53 • 63-65 • 72

FINISHES

Matte Black
Matte Gunmetal
Matte Silver with Brushed Face

SIZES

19X8.5 20X8.5 21X9 22X9
19X9 20X9 21X10.5 22X10.5
19X9.5 20X10.5
19X10 20X11
19X11 20X12

OFFSET RANGE

+15 to +73

BOLT PATTERN

5x100 to 5x130



SYDNEY

The same beauty and elegance of the city can also be found in the XO Sydney wheel. A deep concave center, combined with milled edges, gives the XO Sydney the sharp look of a forged wheel, typically found only on the most exotic vehicles.



FEATURED VEHICLE PAGES:

Pages: 56-57 • 60 • 65 • 74 • 78-79

FINISHES

Matte Black
Gloss Silver with Brushed Face Milled Spokes

SIZES

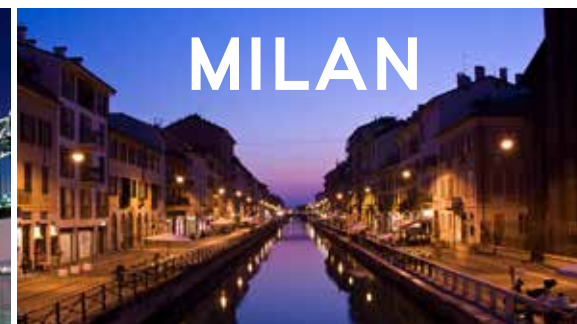
20X8.5 22X9
20X10 22X10.5

OFFSET RANGE

+15 to +48

BOLT PATTERN

5x100 to 5x130



MILAN

Extraordinary, effortless luxury can be found in the XO Milan wheel. With its deep concave center and a detailed mesh design, the XO Milan is sure to exceed your expectations.



FEATURED VEHICLE PAGES:

Pages: 11 • 14 • 24 • 26 • 52 • 54 • 61

FINISHES

Matte Black
Matte Silver w/ Brushed Face

SIZES

19X8.5 20X8.5 21X9 22X9
19X9.5 20X10 21X10.5 22X10.5

OFFSET RANGE

+15 to +48

BOLT PATTERN

5x100 to 5x130



CARACAS

The XO Caracas wheel blends a deep concave design with a modern split-five spoke style. With an optional hand-brushed aluminum face or solid matte black finish, the XO Caracas is a wheel the artists of Venezuela can be proud of.



FEATURED VEHICLE PAGES:

Pages: 11 • 27 • 33 • 55 • 60 • 65

FINISHES

Matte Black
Matte Black with Brushed Face

SIZES

19X8.5 20X8.5 22X9
19X9.5 20X10 22X10.5

OFFSET RANGE

+15 to +48

BOLT PATTERN

5x100 to 5x130



TOKYO

The XO Tokyo is all about looking better and going faster. Like the cars it was designed for, this wheel is super clean and aggressive. The 10-spoke concave design with a hand-brushed silver or matte black finish will give your car the intimidating look you want.



FEATURED VEHICLE PAGES:

Pages: 28-29 • 33

FINISHES

Matte Silver with Brushed Face
Matte Black

SIZES

20X8.5 22X9
20X10 22X10.5

OFFSET RANGE

+15 to +48

BOLT PATTERN

5x100 to 5x130



ST. THOMAS

The XO St. Thomas wheel blends cutting-edge design with timeless style. With a uniquely crafted five star design and exclusive chrome face highlights, the XO St. Thomas exemplifies contemporary sophistication.



FEATURED VEHICLE PAGES:

Pages: 29 • 33 • 36 • 45 • 61-62

FINISHES

Gloss Silver with Chromed Face

SIZES

20X8.5 22X9
20X10 22X10.5

OFFSET RANGE

+15 to +48

BOLT PATTERN

5x100 to 5x130



ATHENS

The X140 Athens wheel carries on the tradition of trend-setting style and innovation. By creating the Athens, XO Luxury is bringing back the Stainless Steel Lip to the custom wheel scene. Having 4.5" of lip in the rear and 3.0" in front, the X140 Athens will have even the gods in awe!



FEATURED VEHICLE PAGES:

Pages: 4 • 11 • 30 • 47 • 58-59 • 68

FINISHES

Gloss Gunmetal with Stainless Steel Lip
Gloss Black with Stainless Steel Lip
Gloss Black with Gloss Black Lip

SIZES - LIP DEPTH

20X9 - 2.5"
20X10.5 - 4.5"
22X9 - 3.0"
22X10.5 - 4.5"

OFFSET RANGE

+15 to +48

BOLT PATTERN

5x100 to 5x130



NEW YORK

The XO New York wheel is the face of unparalleled quality and style. With its elegant hand brushed multi-spoke aluminum face and the impressive stainless steel chrome lip, the New York wheel is sure to make a bold statement.



FEATURED VEHICLE PAGES:

Pages: 11 • 33 • 46

FINISHES

Matte Silver with Stainless Steel Lip
Gloss Black with Stainless Steel Lip

SIZES - LIP DEPTH

20X8.5 - 2.5"
20X10 - 3.5"
22X9 - 3.0"
22X10.5 - 4.5"

OFFSET RANGE

+15 to +45

BOLT PATTERN

5x100 to 5x130



SPIN FORGED SERIES IT'S ALL ABOUT INNOVATION

Flow Forming is one of the most innovative manufacturing processes to enter the wheel industry. This complex process involves the application of heat and pressure to the inner barrel of the wheel, stretching and compressing the aluminum, which increases tensile strength of the barrel. This development shares similar properties to those found in the forging method. The final product is lighter, stronger and has improved shock resistance as well as an increased load capacity over regular cast wheels.

The major difference between cast and flow formed wheels is in the thickness of the wheel barrel. The flow forming process increases the strength of the aluminum allowing the barrel to be made much thinner and lighter than a

STAGE 1

Immediately after casting, the wheel is transferred to the flow forming drum. High pressure hydraulic rollers move into position at the top of the wheel barrel.



STAGE 2

The highly pressurized hydraulic rollers move down the barrel applying force to compress, stretch and form the entire wheel barrel, producing optimal weight savings.



STAGE 3

The flow forming process alters the grain of the aluminum to achieve a barrel that is thinner, stronger and lighter, increasing strength and reducing weight properties similar to those of forged wheels.



XF3



XF2



XF1



SPIN FORGED SERIES

Flow Forming has many advantages over a regular cast wheel. Two main benefits are weight reduction and strength. Flow Formed wheels are generally 25% lighter than a regular cast wheel. The strength of a Flow Formed wheel on average has a 20% - 30% increase in tensile strength over a fully cast wheel.

Due to the fact that producing wheels with the Flow Forming process increases the tensile strength of a wheel design, this also yields a higher load rating in comparison to a conventional cast wheel.

XF3 SIZES
20X9
20X10.5

OFFSET RANGE
+15 to +48

FINISHES

Onyx (Gloss Black)
Arsenic (Fully Brushed Metal Gloss Gunmetal Clear Coat)
Bronzite (Fully Brushed Metal Gloss Bronze Clear Coat)

HUBCENTRIC RANGE
60.1 - 84.1

BOLT PATTERN RANGE
5x100 to 5x130

XF2 SIZES
19x9.5 20X9
20X11 20X10.5

OFFSET RANGE
+15 to +73

FINISHES

Onyx (Gloss Black)
Arsenic (Fully Brushed Metal Gloss Gunmetal Clear Coat)
Bronzite (Fully Brushed Metal Gloss Bronze Clear Coat)

HUBCENTRIC RANGE
60.1 - 84.1

BOLT PATTERN RANGE
5x100 to 5x130

FEATURED VEHICLE PAGES:

Pages: 12 • 22 • 32-33 • 41-42 • 48-51 • 65-73 • 76

XF1 SIZES & WEIGHTS

		GT-R compatible				CORVETTE C7			
20x9	20x10	20x10.5	20x11	20x10	20x12	22x9	22x10.5	19x9.5	20x11
~25 lbs	~25.5 lbs	~26 lbs	~26.5 lbs	~25.5 lbs	~27.5 lbs	~30 lbs	~31 lbs	~23 lbs	~28 lbs

~ Weights may vary by design, size and offset.

FINISHES

Onyx (Gloss Black)
Arsenic (Fully Brushed Metal Gloss Gunmetal Clear Coat)
Bronzite (Fully Brushed Metal Gloss Bronze Clear Coat)
Ruby (Fully Brushed Metal Gloss Red Clear Coat)
Sapphire (Fully Brushed Metal Gloss Blue Clear Coat)

OFFSET RANGE
+15 to +73

BOLT PATTERN RANGE
5x100 to 5x130

HUBCENTRIC RANGE
60.1 - 84.1

VERONA
19X9.5 F | 20X11 R

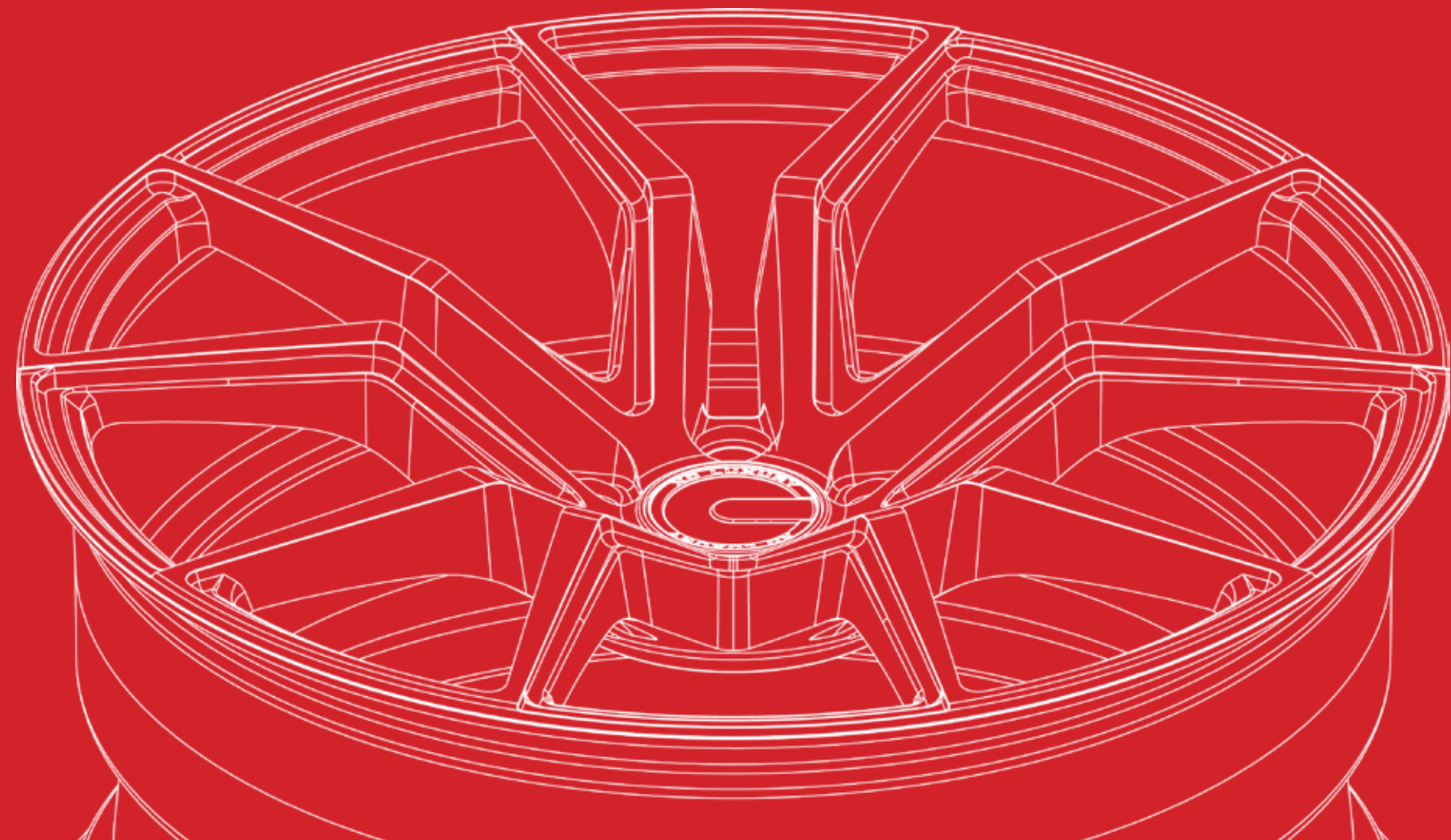


American Muscle

12	CAMARO
16	CORVETTE
22	CHALLENGER
26	MUSTANG

American Muscle

No Replacement for Displacement...





XF1 SPIN-FORGED
22X9 F | 22X10.5 R



MILAN
22X9 F | 22X10.5 R



VERONA
20X10 F | 20X12 R





VERONA
19X9.5 F | 20X11 R



VERONA
19X9.5 F | 20X11 R



VERONA

19X9.5 F | 20X11 R



VERONA

19X9.5 F | 20X11 R







XF1 SPIN-FORGED
22X9 F | 22X10.5 R





MILAN
22X9 F | 22X10.5 R



VERONA
22X9 F | 22X10.5 R



MILAN
20x8.5 F | 20x10 R



CARACAS
20x8.5 F | 20x10 R



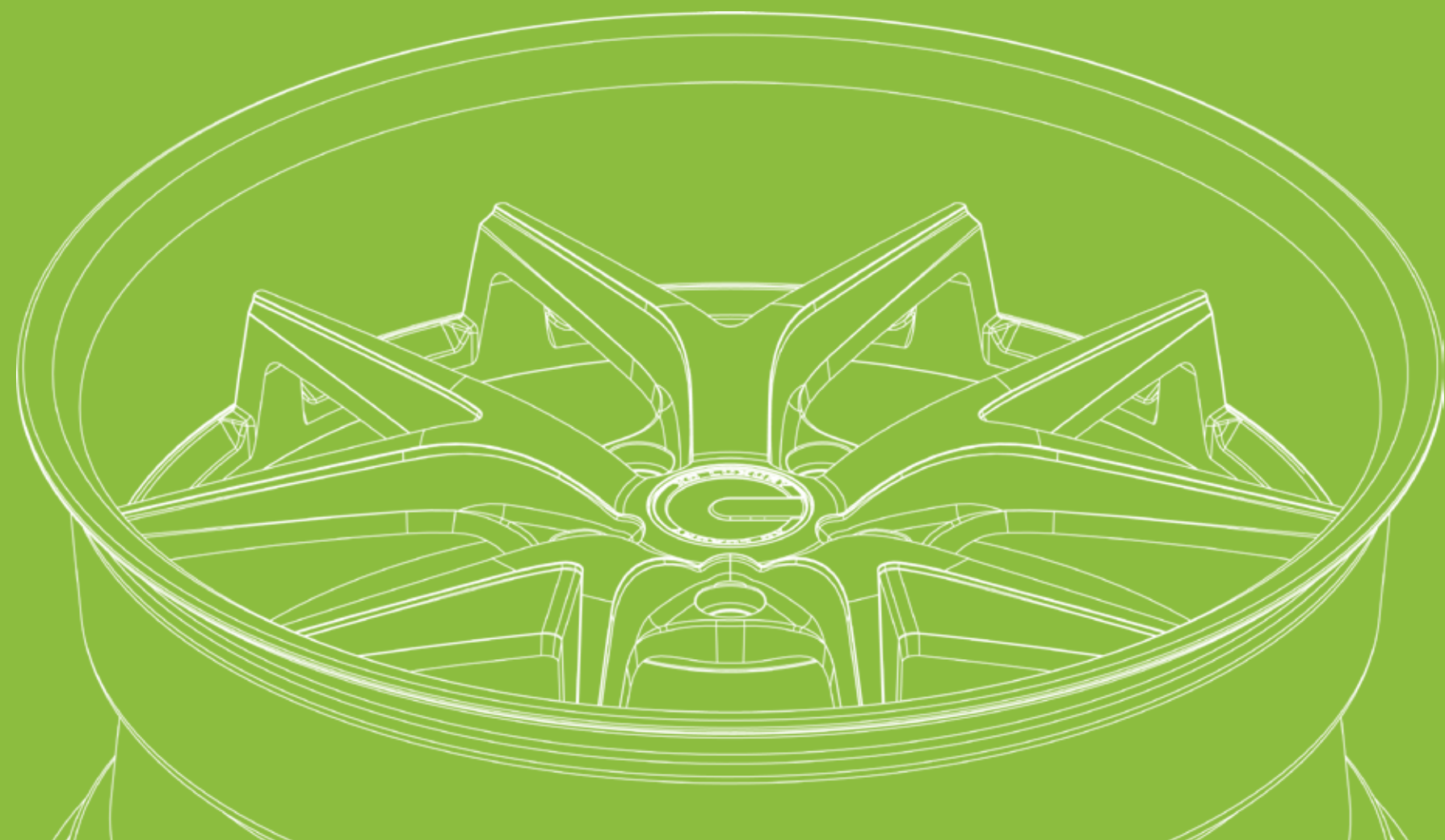


Electric + Hybrid

<i>ELECTRIC</i>		<i>HYBRID</i>	
28	TESLA	30	BMW
29	FISKER		

Electric + Hybrid

Because everything comes from Mother Nature, she matters...





ATHENS
22X9 F 22X10.5 R

XF1 SPIN-FORGED
20X9 F | 20X10.5 R

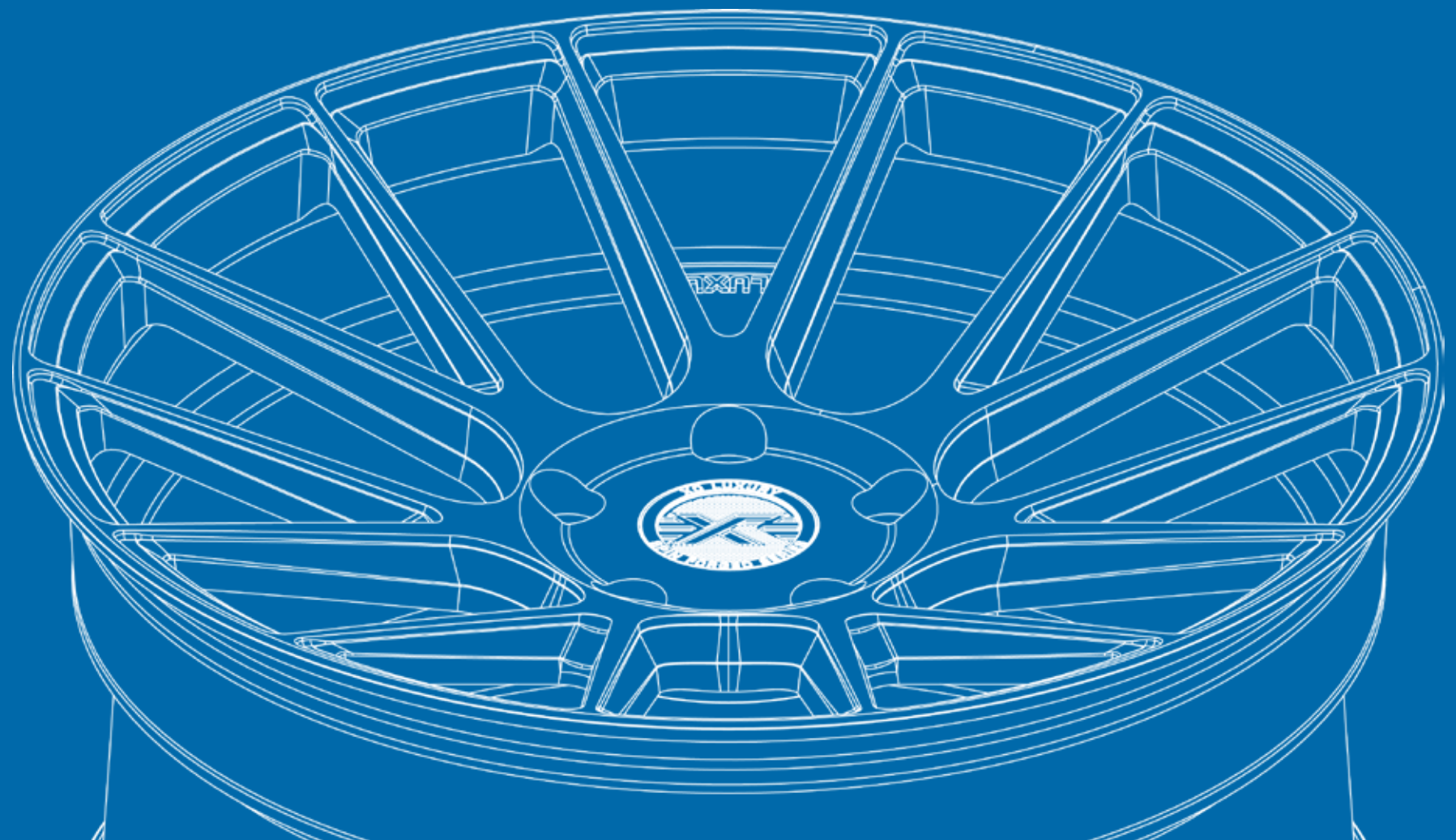


Exotics + European

<i>EXOTICS</i>		<i>EUROPEAN</i>	
34	AUDI	42	BMW
36	BUGATTI	50	LAND ROVER
38	FERRARI	54	MERCEDES-BENZ
40	LOTUS	61	PORSCHE
41	PORSCHE		

Exotics + European

Pioneers of engineering...





VERONA
20X10 F | 20X12 R



ST. THOMAS
22X9 F | 22X10.5 R



VERONA
20X9 F | 20X12 R





XF1 SPIN-FORGED
20X9 F | 20X10.5 R



VERONA
20X9 F | 20X9 R



VERONA
19X8.5 F | 19X11 R

XF1 SPIN-FORGED
22X9 F | 22X10.5 R





ST. THOMAS
22X9 F | 22X10.5 R



VERONA
20X10 F | 20X10 R





ATHENS
22X9 F | 22X10.5 R



NEW YORK
22X9 F | 22X10.5 R





XF1 SPIN-FORGED
20X9 F 20X10.5 R





XF1 SPIN-FORGED
20X9 F | 20X10.5 R



XF1 SPIN-FORGED
22X10.5 F | 22X10.5 R



MILAN
22X10.5 F | 22X10.5 R



MILAN
22X10.5 F | 22X10.5 R



VERONA
22X10.5 F | 22X10.5 R

MILAN
22X10.5 F | 22X10.5 R



CARACAS
20X8.5 F | 20X10 R





SYDNEY
22X9 F | 22X10.5 R

SYDNEY
22X9 F | 22X10.5 R



ATHENS
22X9 F | 22X10.5 R



ATHENS
22X9 F | 22X10.5 R



CARACAS
20X8.5 F | 20X10 R



ST. THOMAS
22X9 F | 22X10.5 R



SYDNEY
20X8.5 F | 20X8.5 R



MILAN
22X9 F | 22X10.5 R

ST. THOMAS
22X10.5 F | 22X10.5 R



VERONA
22X10.5 F | 22X10.5 R





VERONA
22X10.5 F | 22X12 R

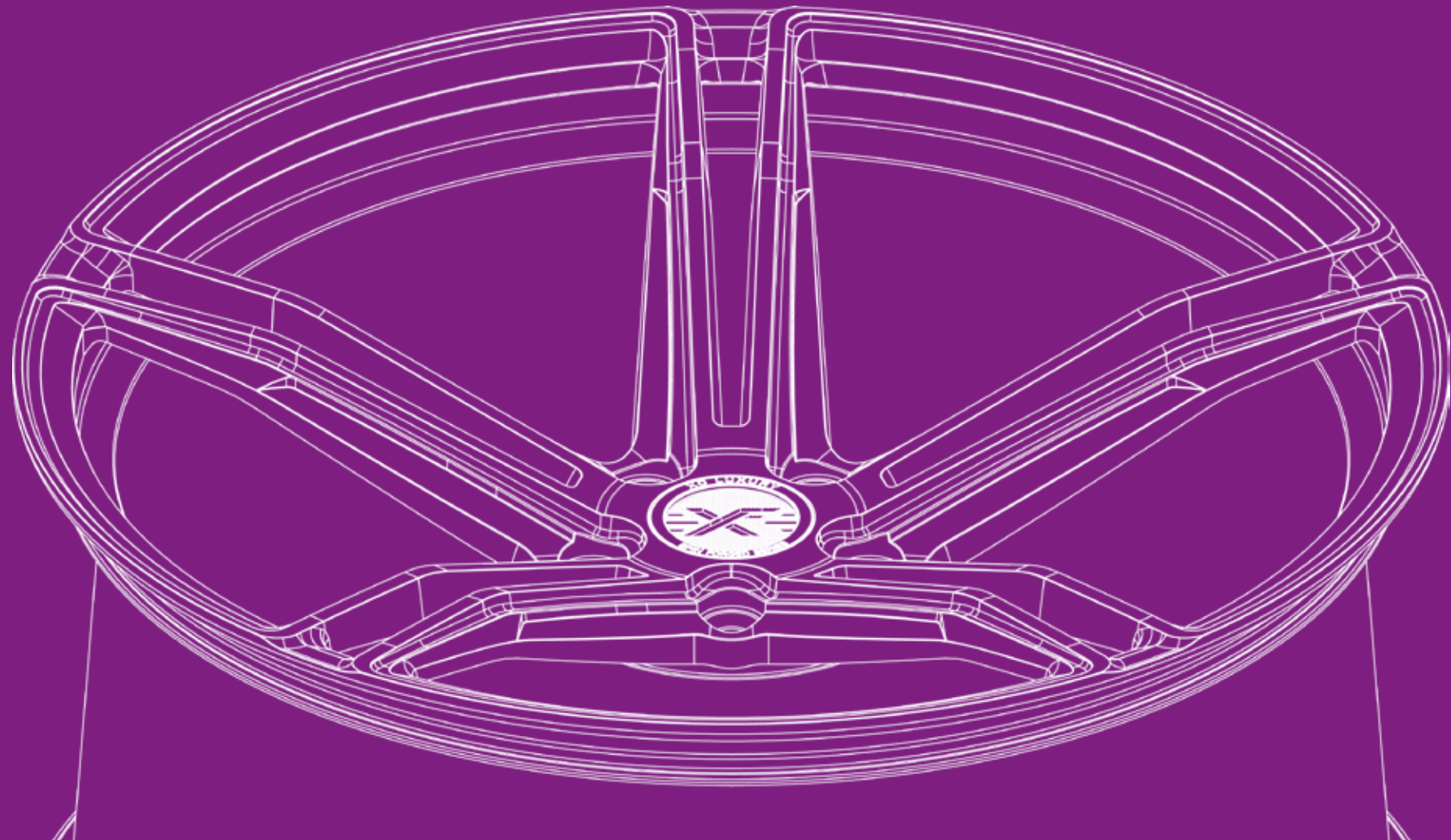
Japanese

64	NISSAN
66	INFINITI
70	LEXUS



Japanese

Iconic super cars and Drift Kings...





XF1 SPIN-FORGED
20X9 F | 20X10.5 R







XF1 SPIN-FORGED
20X9 F 20X10.5 R





VERONA
19x9.5 F | 19x11 R



XF1 SPIN-FORGED
20x9 F | 20x10.5 R





XF1 SPIN-FORGED
20X9 F | 20X10.5 R





SYDNEY
20X8.5 F | 20X10 R



SYDNEY
20X8.5 F | 20X10 R



DESIGN

XO Luxury Wheels are designed in the United States of America and are products of many years of research and development, ensuring premium quality in craftsmanship and trend setting designs with a unique style. We at XO Luxury are committed to making our 2017 wheel Collection the most sought-after wheels on the market.

This is the initial design phase. Sketching the wheel on paper, making many changes as the basic concept is created. Once the concept is on paper, the next step is to transfer that concept from paper into the computer by creating a 3-D model. The 3-D model is run through many testing programs based on FEA standards before the file is sent to a CNC machine where the concept is cut into reality. The final, painted product is then packaged and sent to authorized dealers for professional installation on the vehicle.



WARRANTY

XO Luxury wheels are put through rigorous testing to meet the uppermost standards in quality and performance. Because each wheel is required to meet such high standards, all wheels have a Lifetime Structural Warranty, showing our confidence in the quality of our products.

In the event of a structural failure caused by a manufacturer defect on a wheel with normal use, our Lifetime Structural Warranty guarantees the replacement of your wheel. Our Lifetime Structural Warranty does not cover finish defects. Defects within the finish are covered under a separate 1 year warranty. If you experience any defects in the finish within the first year of ownership under normal use and the wheels were properly installed and maintained, XO Luxury will replace the defective wheel free of charge.



FITMENT GUIDE

XO Luxury has vehicle-specific staggered fitments with multiple concave and lip wheel designs that fit most passenger vehicles. XO Luxury Wheels stocks non-machined (blank) wheels that can be customized to exact specifications for those who want to achieve perfection based on their vehicle make & model. Rest assured that XO Luxury wheels cater to majority of the vehicle brands on the market. Most competitors carry pre-drilled parts only and do not have the machining capabilities to modify wheels by request. Please understand that because of the wide range of customization, custom fitting wheels will require an average of 1 extra week before shipping. Blank wheels also allow us to technically "always have stock"; even after a standard fitment is sold out. Nevertheless, keeping standard fitments in stock allows for a faster turn-around time. XO Luxury has offset ranges from +15 all the way up to +73. To better understand, the offset range changes the total center thickness of a wheel and directly affects the measurement between the face of the wheel and outer fender.

LUG HOLE DRILLING



XO Luxury can drill any 5 hole bolt pattern within a wheel's range. Many auto manufacturers may have different bolt patterns ranging between 5x100 and 5x130.

HUBCENTRIC BORING



A change in vehicle model usually comes with a change in the center bore of a vehicle's suspension. Custom center-boring produces better ride comfort eliminating vibrations.

OFFSET BACK-PADDING



While lug holes and center-bores are generally most important for vehicle installation, the offset is a much higher priority for the car enthusiast. A vehicle's "stance" is based on offset and ride height.

AMERICAN

- | | | | | | |
|-----------|----------|--------|---------|---------|--------|
| Buick | Chrysler | Holden | Lincoln | Polaris | Saturn |
| Cadillac | Dodge | Jeep | Mercury | Pontiac | Tesla |
| Chevrolet | Ford | Karma | Mosler | Saleen | |

EUROPEAN

- | | | | | | |
|--------------|---------|-------------|---------------|---------|-------------|
| Aston Martin | BMW | Jaguar | Maserati | Mini | Rolls-Royce |
| Audi | Bugatti | Lamborghini | McLaren | Peugot | Volkswagen |
| Bentley | Ferrari | Lotus | Mercedes-Benz | Porsche | Volvo |

ASIAN

- | | | | |
|---------|----------|------------|--------|
| Acura | Infiniti | Mitsubishi | Subaru |
| Honda | Lexus | Nissan | Toyota |
| Hyundai | Mazda | Scion | |

*Please contact us if your vehicle manufacturer is not listed. Non-listed brands are still eligible for custom machining.

XO LUXURY™



Men's Tees & Tanks



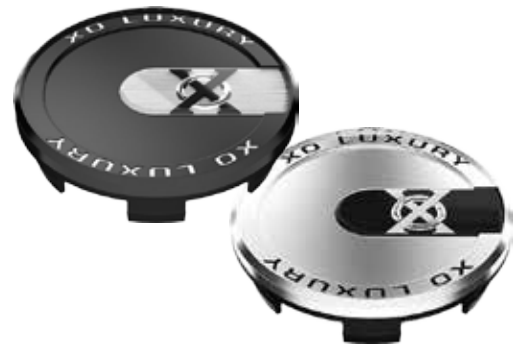
Women's Tees & Tank



XF Spin Forged Hat



XF Spin Forged Series Wheel Caps



XO Luxury Wheel Caps



Corvette C7 Wheel Cap Conversion Kit

