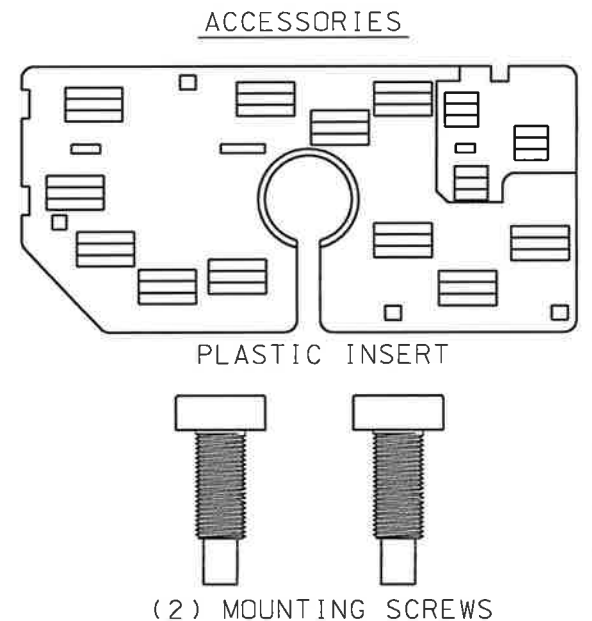
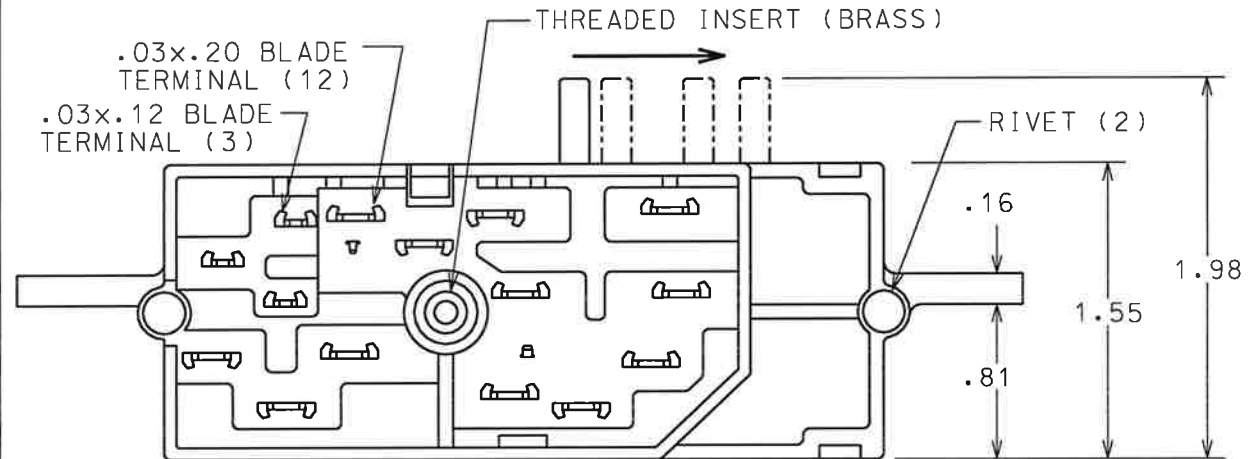
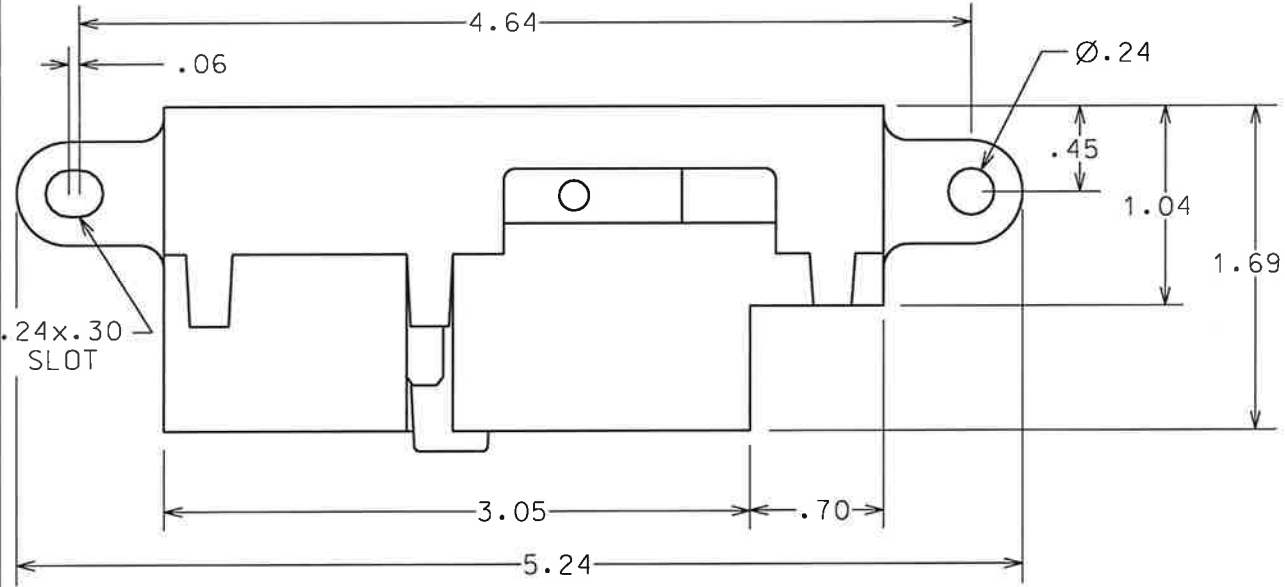


PART NO. LS615	TOLERANCES UNLESS SPECIFIED		
	TWO PLACE DECIMALS +/- .015	THREE PLACE DECIMALS +/- .005	ANGLES +/- 1°



NOTES:
1. REFERENCE "ANSI Y14.5M-1982".

REPLACES OE #F4DZ-11572-B, SW-5011, 48750-0B000

				MATERIAL	SCALE FULL	WELLS MFG. CORP. FOND DU LAC, WISCONSIN	
					DATE 9-4-97	DWN. BY KFJ	TITLE IGNITION SWITCH
				FINISH	ENGINEER 9-4-97	DAL	
					APPROVED 9-4-97	JSK	PART NO. LS615
RELEASED	19438A	9-27-95	KFJ	PURCH. <input type="checkbox"/>	PROD. <input type="checkbox"/>	MODEL	
L	REVISION	CN	DATE	BY	CAD REF.	LS615	

Shop for quality WVE products on our website.

Learn more about replacement ignition part we have.