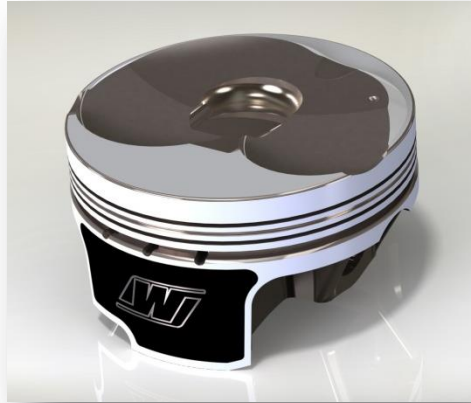


New Product

Chevy LSX LT1 C7 Corvette, Gen 6 Camaro and GM Trucks



Features

- Dedicated forging
- 2618 Material
- Anti-detonation & pressure seal grooves
- ArmorPlating™ Coated
- ArmorGlide® skirt coating
- Experience

Benefits

- Light weight and superior strength
- Aerospace alloy for superior strength/weight ratio
- Help control and distribute combustion gases between the compression rings
- Reduces the effects of detonation and prevents microwelding of the compression rings
- Improved wear and friction reduction
- Over 70 years as the industry leader in forged piston technology

Kit includes (8) pistons, (8) pins, (8) locks, and (8) groove lock spacers- where applicable.

Chevrolet LSX

NEW! Direct Injected LT1 6.2L

- ArmorGlide™ Skirt Coating
- .200" wall pin & Spirolox®
- 2618 High Strength Alloy
- C/R at 0 deck with .051" gasket
- Armor Plating™ thermal protection
- Anti-detonation & pressure seal grooves
- Premium GFX Rings

Kit Part #	Bore	Comp. HL	Stroke	Rod	0 Deck at	Std. Deck Ht.	Avg. Wt.	Volume	Compression Ratio At: 59cc	Pin Part # (Included)	Std. Tension Rings 1.2, 1.2, 3mm (Included)	Valve Pocket
3.622" Stroke												
K0233XAS	4.065	1.304	3.622	8.125	9.240	9.240		-2	11.7	S718 .927 x 2.250	4087GFX (x8)	LT1
K0233X05	4.070										4072GFX (x8)	
K0233X1	4.075										4072GFX (x8)	
4.000" Stroke												
K0234XAS	4.065	1.116	4.000	8.125	9.240	9.240		-20	10.6	S718 .927 x 2.250	4087GFX (x8)	LT1
K0234X05	4.070										4072GFX (x8)	
K0234X1	4.075										4072GFX (x8)	
K0234X125	4.125										4127GFX (x8)	
									10.75			

SPECIFICATIONS AND INSTALLATION INSTRUCTIONS FOR WISECO AUTOMOTIVE PISTONS

PISTON TO CYLINDER WALL CLEARANCE - Wiseco pistons are designed with a special cam and barrel design. When measuring for piston to wall clearance, measure at widest point of piston skirt 1.300" from bottom of oil ring groove, 90 degrees from wrist pin hole. Refer to piston kit specification sheet for recommended piston to wall clearances.

COATED PISTONS - Piston to wall clearance is calculated before the coating is applied to the piston skirts. Use the recommended bore diameter of the piston kit, and install the pistons to this bore size.

DOMES CLEARANCE - Dome to cylinder head clearance must be checked prior to assembly.

VALVE TO PISTON CLEARANCE - Most Wiseco pistons are machined with valve pockets that are deeper and larger than stock. These pockets provide adequate valve clearance under most conditions. It is very important that valve to piston clearance be checked upon piston installation. This is necessary due to many variations in cams, how much a block has been decked, or if the heads have been cut or angle milled.

INSTALLATION OF SPIRO LOX - Separate spiro lox with fingers and place one end into spiro groove. Take a non-metallic object (i.e. wooden dowel pin) and slowly thread lox into groove moving in a circular counter-clockwise motion. To remove lox, insert thin bladed screwdriver into end of notch on spiro lox. Lift spiro lox end out of groove and remove lox by threading outward in a circular clockwise motion.

Note: Some applications may require 2 spiro loxs per side. Do not use spiro lox in piston if the pin is press fit.

CAUTION: USE ONLY WISECO SPIRO LOX IN A WISECO PISTON. SUBSTITUTION CAN RESULT IN SEVERE ENGINE DAMAGE. ALSO, WISECO RECOMMENDS THAT YOU DO NOT RE-USE SPIRO LOX.

WARRANTY DISCLAIMER*

Due to the nature of performance applications, the parts in this kit are sold without any express warranty or any implied warranty of merchantability or fitness for a particular purpose. Wiseco shall not, under any circumstances, be liable for any special, incidental or consequential damages, including, but not limited to damage, or loss of profits or revenue, cost of purchased or replacement goods, or claims of customers of the purchaser, which may arise and/or result from sale, installation or use of these parts.

Installation of these parts could adversely affect the vehicle manufacturer's warranty coverage.