



BMW MINI • 2014-PRESENT SUPERLITE 6R FRONT BRAKE KITS

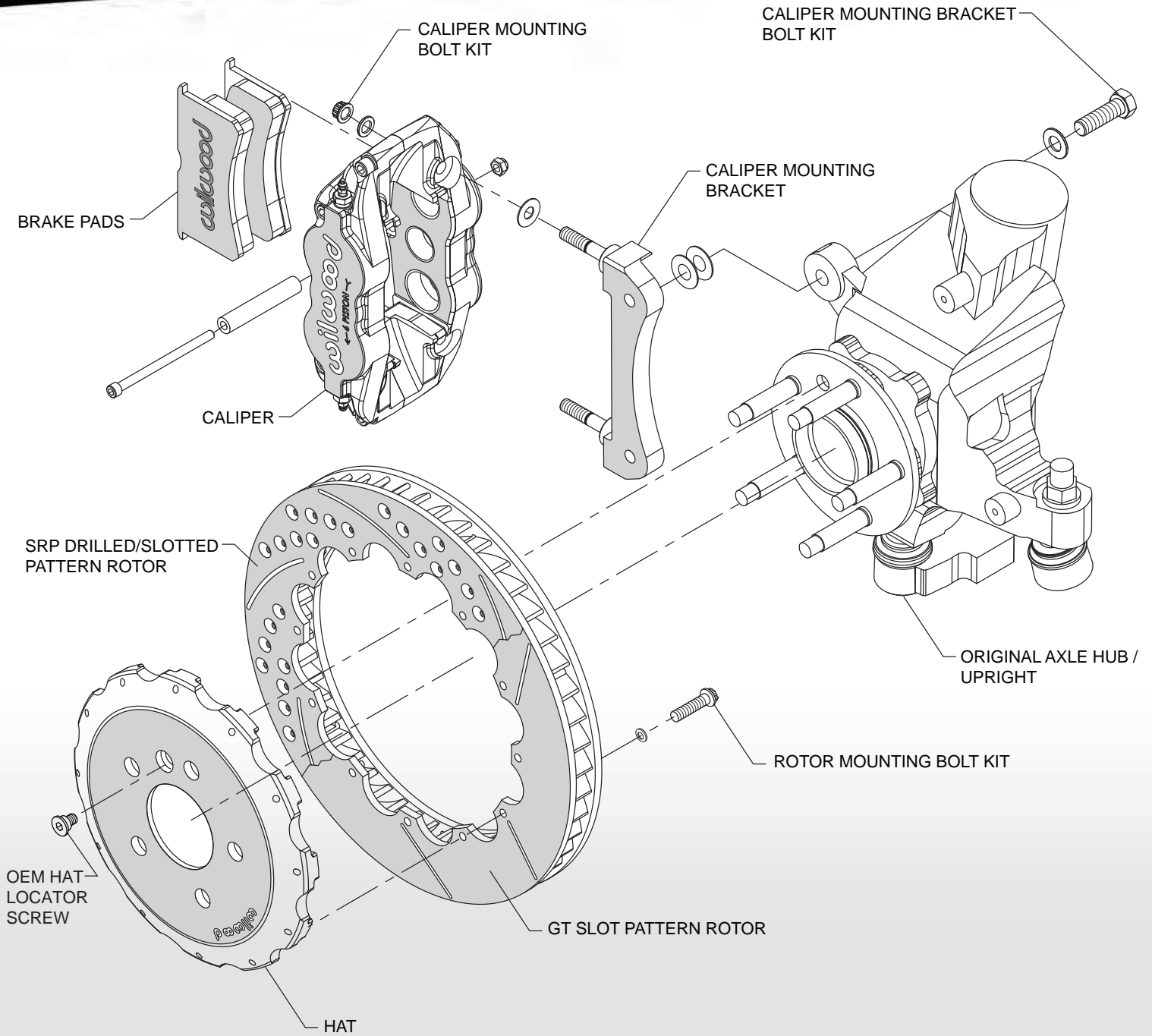
Superlite 6R Front Brake kits for the 2014-present BMW Mini combine cutting edge technology with high-tech styling to deliver track proven endurance and big brake performance for the street, track or show.



Kit Features



- Superlite six piston radial mount forged aluminum calipers with stainless steel pistons
- 12.88" diameter directional vane GT competition or SRP drilled and slotted rotors with aluminum hats
- BP-10 metallic – composite compound *SmartPads*
- Fully compatible with factory master cylinder output and all ABS controls
- Calipers available with choice of gloss red or black powder coat
- All inclusive kit complete with DOT approved stainless steel braided flexlines and hardware
- Kits include a detailed guide with step-by-step instructions of the fully bolt-on installation
- Bias-matched with Wilwood NDPR four piston rear big brake kits
- Easily configured for dedicated track use with race-only pads and Thermlock® pistons



ORDERING INFORMATION: Complete Front Brake Kits for 2014-Present BMW Mini

PART NUMBER	DESCRIPTION	CALIPER FINISH
140-15214	Superlite 6R Calipers, 12.88" Spec37 GT Competition Series Rotors	Black Powder Coat
140-15214-D	Superlite 6R Calipers, 12.88" Spec37 SRP Drilled and Slotted Rotors	Black Powder Coat
140-15214-R	Superlite 6R Calipers, 12.88" Spec37 GT Competition Series Rotors	Red Powder Coat
140-15214-DR	Superlite 6R Calipers, 12.88" Spec37 SRP Drilled and Slotted Rotors	Red Powder Coat