



CHRYSLER/DODGE/PLYMOUTH C-BODY • 1965 - 1972 DYNALITE, DYNAPRO AND SUPERLITE FRONT BRAKE KITS

Forged Dynalite, DynaPro 6 and Superlite 6R front brake kits for the 1965-1972 Chrysler/Dodge/Plymouth (CDP) C-Body combines cutting-edge technology with high-tech styling to deliver track proven endurance and big brake performance for the street, track or show.

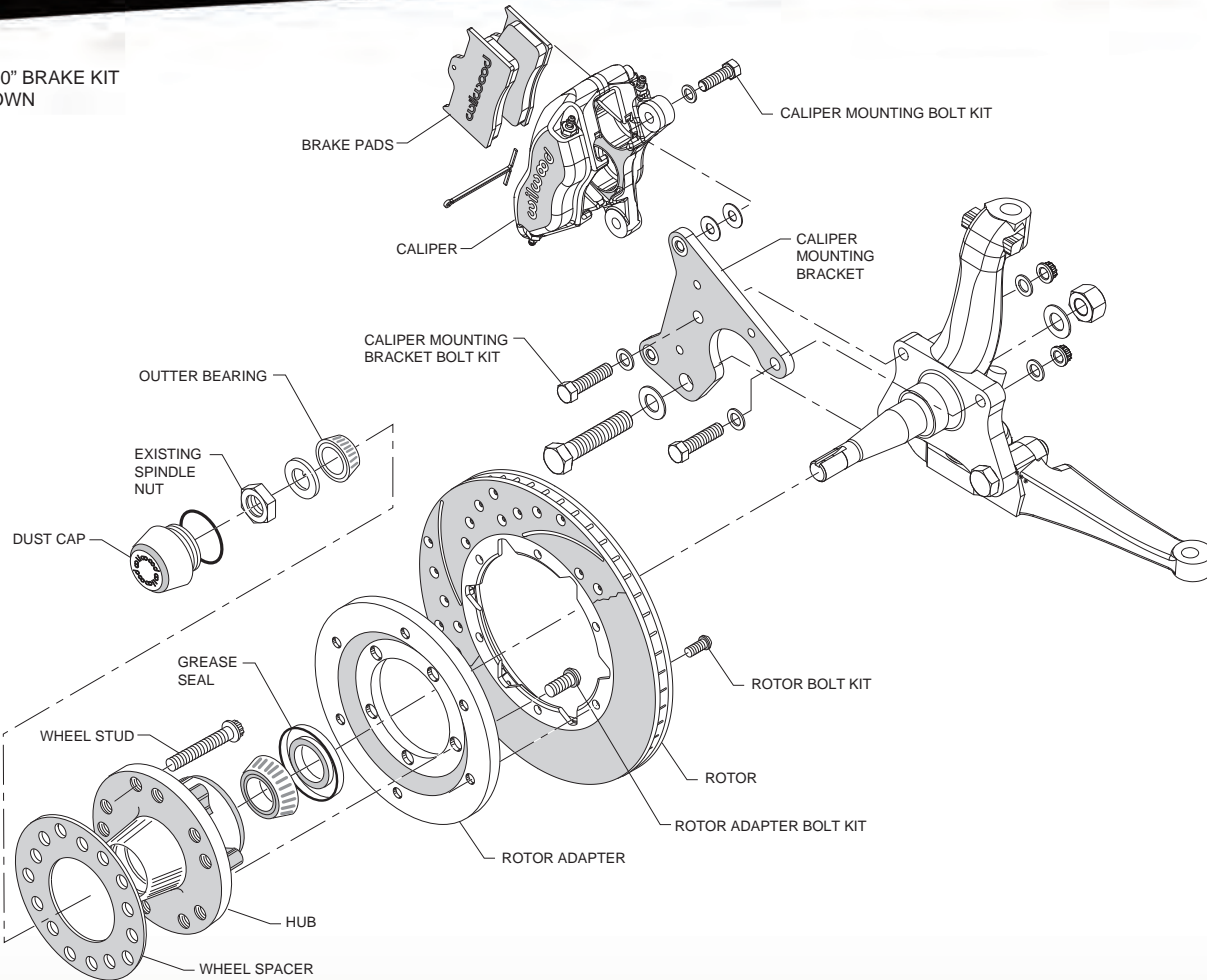


Kit Features



- Select either a forged Dynalite four piston caliper, or a DynaPro or Superlite six piston caliper
- Dynalite calipers are available black anodized or red powder coat; DynaPro and Superlite calipers available either gloss black or red powder coat
- 11.00" or 12.19" diameter vented iron ULHP smooth face or SRP drilled and slotted rotors are available with the Dynalite or DynaPro caliper
- 12.88" or 14.00" diameter GT slotted or SRP drilled and slotted **Spec37** alloy directional vane rotors are available with Superlite calipers
- BP-10 compound composite metallic *SmartPads*
- Fully bolt-on kits complete with brackets, hardware and detailed installation instructions
- Fits original equipment drum brake spindles

DYNALITE 11.00" BRAKE KIT
DRAWING SHOWN



ORDERING INFORMATION: Front Brake Kits for 1965-1972 CDP C-Body

PART NUMBER	DESCRIPTION	CALIPER FINISH
140-15196	Dynalite Calipers, 11.00" ULHP Plain Face Rotors	Black Anodize
140-15196-D	Dynalite Calipers, 11.00" SRP Drilled and Slotted Rotors	Black Anodize
140-15196-R	Dynalite Calipers, 11.00" ULHP Plain Face Rotors	Red Powder Coat
140-15196-DR	Dynalite Calipers, 11.00" SRP Drilled and Slotted Rotors	Red Powder Coat
140-15197	Dynalite Calipers, 12.19" ULHP Plain Face Rotors	Black Anodize
140-15197-D	Dynalite Calipers, 12.19" SRP Drilled and Slotted Rotors	Black Anodize
140-15197-R	Dynalite Calipers, 12.19" ULHP Plain Face Rotors	Red Powder Coat
140-15197-DR	Dynalite Calipers, 12.19" SRP Drilled and Slotted Rotors	Red Powder Coat
140-15198	DynaPro 6 Calipers, 12.19" ULHP Plain Face Rotors	Black Powder Coat
140-15198-D	DynaPro 6 Calipers, 12.19" SRP Drilled and Slotted Rotors	Black Powder Coat
140-15198-R	DynaPro 6 Calipers, 12.19" ULHP Plain Face Rotors	Red Powder Coat
140-15198-DR	DynaPro 6 Calipers, 12.19" SRP Drilled and Slotted Rotors	Red Powder Coat
140-15199	Superlite 6R Calipers, 12.88" Spec37 GT Competition Series Rotors	Black Powder Coat
140-15199-D	Superlite 6R Calipers, 12.88" Spec37 SRP Drilled and Slotted Rotors	Black Powder Coat
140-15199-R	Superlite 6R Calipers, 12.88" Spec37 GT Competition Series Rotors	Red Powder Coat
140-15199-DR	Superlite 6R Calipers, 12.88" Spec37 SRP Drilled and Slotted Rotors	Red Powder Coat
140-15200	Superlite 6R Calipers, 14.00" Spec37 GT Competition Series Rotors	Black Powder Coat
140-15200-D	Superlite 6R Calipers, 14.00" Spec37 SRP Drilled and Slotted Rotors	Black Powder Coat
140-15200-R	Superlite 6R Calipers, 14.00" Spec37 GT Competition Series Rotors	Red Powder Coat
140-15200-DR	Superlite 6R Calipers, 14.00" Spec37 SRP Drilled and Slotted Rotors	Red Powder Coat