



MAZDA MX-5 • 2016-PRESENT DYNALITE AND DYNAPRO 6 FRONT BRAKE KITS

Forged Dynalite and DynaPro 6 front brake kits for the 2016-present Mazda MX-5 Miata combine cutting-edge technology with high-tech styling to deliver track proven endurance and big brake performance for the street, track or show.



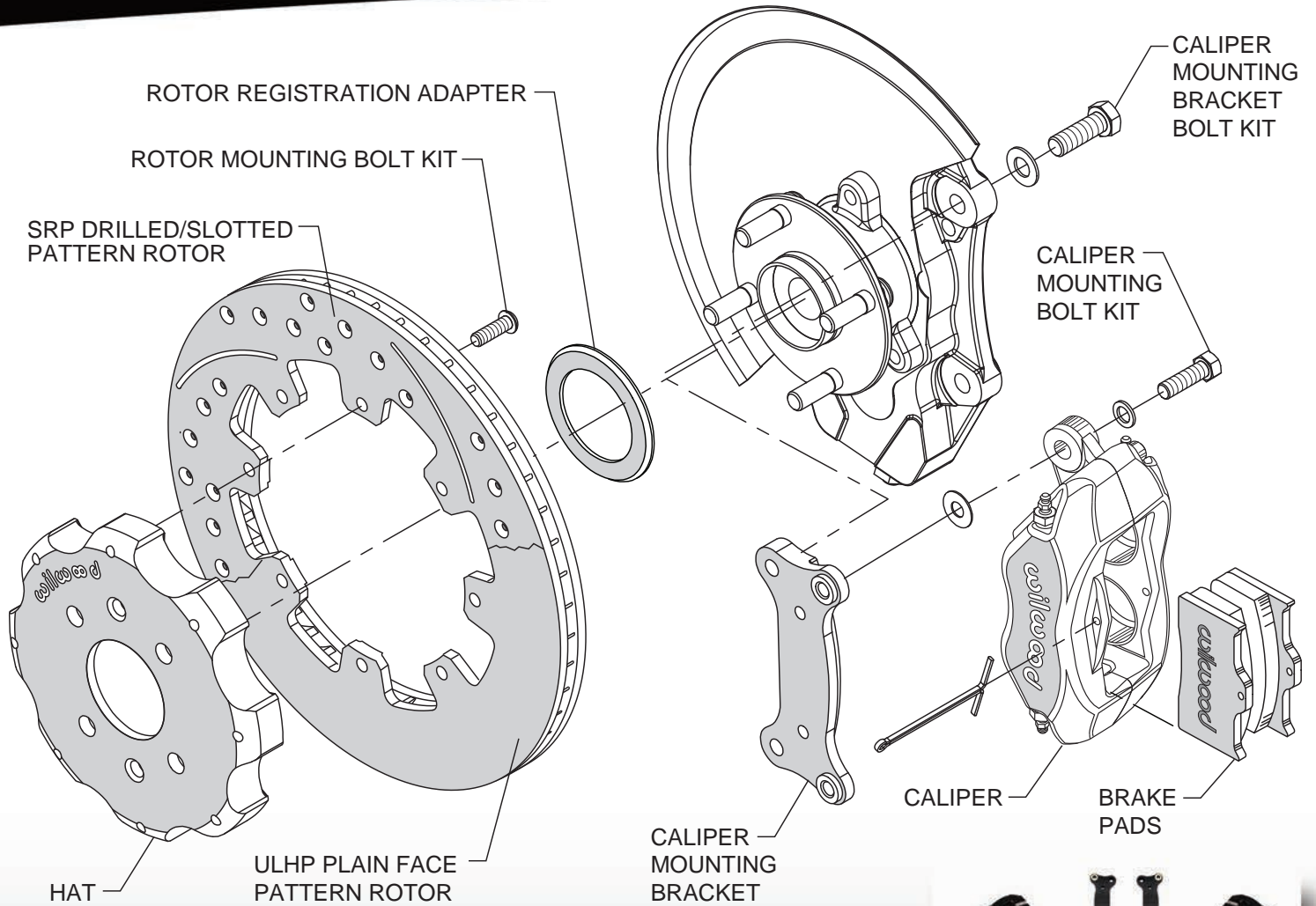
DYNAPRO 6 12.88"
BRAKE KIT

DYNALITE 12.19" BRAKE KIT

Kit Features

- Select either a forged Dynalite four piston caliper or a DynaPro 6 six piston caliper
- Available in our signature gloss black, competition red and 22 additional color options; Dynalite calipers come standard in black anodized
- Dynalite calipers available with 12.19" diameter ULHP smooth face or SRP drilled and slotted rotors; DynaPro 6 is paired with 12.88" GT slotted or SRP rotors
- Two-piece rotor mounting with weight-saving aluminum hats
- Fully compatible with factory master cylinder output and all ABS controls
- BP-10 compound composite metallic *SmartPads*
- All-inclusive kit complete with DOT approved stainless steel braided flexlines and hardware





DYNALITE 12.19" BRAKE KIT DRAWING AND PHOTO SHOWN



ORDERING INFORMATION: Complete Front Brake Kits for 2016-Present Mazda MX-5

| PART NUMBER | DESCRIPTION | CALIPER FINISH |
|------------------------------|-----------------------------------------------------------|-------------------|
| 140-14233 | Dynalite Calipers, 12.19" ULHP Plain Face Rotors | Black Anodize |
| 140-14233-D | Dynalite Calipers, 12.19" SRP Drilled and Slotted Rotors | Black Anodize |
| 140-14233-R | Dynalite Calipers, 12.19" ULHP Plain Face Rotors | Red Powder Coat |
| 140-14233-DR | Dynalite Calipers, 12.19" SRP Drilled and Slotted Rotors | Red Powder Coat |
| 140-14234 | DynaPro 6 Calipers, 12.88" GT Competition Series Rotors | Black Powder Coat |
| 140-14234-D | DynaPro 6 Calipers, 12.88" SRP Drilled and Slotted Rotors | Black Powder Coat |
| 140-14234-R | DynaPro 6 Calipers, 12.88" GT Competition Series Rotors | Red Powder Coat |
| 140-14234-DR | DynaPro 6 Calipers, 12.88" SRP Drilled and Slotted Rotors | Red Powder Coat |