



FRONT DYNAPRO 6 BIG BRAKE KIT FOR 2002-2013 MINI COOPER

Models Covered:

- 2002 - 2013 Mini Cooper (Except Countryman)
- 2002 - 2013 Mini Cooper "S"

Kit Features:

- Upgrade from OE calipers to Forged Billet Aluminum DynaPro 6 six piston calipers for either street or track.
- Choose either 12.88" diameter GT slotted or SRP drilled and slotted rotors.
- Simple bolt-on installation with no modifications required.
- Fully compatible with ABS and OE master cylinder output.
- Fits most 17 or larger wheels.

Component Features:

DynaPro 6 Forged Billet Lug Mount Calipers

- Fully detail machined forged billet DP6 calipers provide positive, big brake stopping power and more than a 14% increase in pad area compared to our DynaPro radial mount four piston models.
- Six differential bore stainless steel pistons generate big brake clamping power with balanced pad loading for even wear in all types of high demand braking applications.
- Stainless steel pistons resist corrosion while slowing the heat transfer rate from the pads to the caliper body, fluid and seals.
- The internal piston seal-in-bore design adds proven durability with keeping the fluid in and dirt out without the need for external boot seals.
- Quick-E clip pad retention pins simplify pad service without the need for caliper removal.
- Calipers are available with either black or red high-gloss, high temperature, brake fluid resistant sealed powder coat and feature Wilwood's signature logo.

GT or SRP Series 12.88" x 0.81" Rotor Options

- GT competition series rotors feature full detail machining with asymmetrical slots in the faces. GT rotors provide the highest degree of durability and longer life for repeated hard braking and high temperature use.
- Drilled rotor kits feature our signature SRP performance drilled and slotted rotors with a durable e-coat finish. E-coat seals the casting and prevents corrosion in all areas of the rotor not swept clean by the brake pads. This durable finish will maintain the high tech styling and appearance of the rotors inside your wheels for many miles down the road.

Forged Aluminum GT Mounting Hats

- Forged aluminum rotor mount hats help reduce weight with the strength to handle the exceptional brake torque delivered by the DynaPro 6 calipers.
- Black E-coat finish resists corrosion while adding to the aggressive competition look inside the wheel.

Wilwood "Smart Pads"

- Kits include our proven formula BP-10 Smart Pads. BP-10 is a unique composite-metallic compound that provides increased friction, stopping power, and higher fade resistance in a clean and quiet running low dust style pad.
- Optional high-temp and race only pad compounds are also available.

Hardware and Plumbing

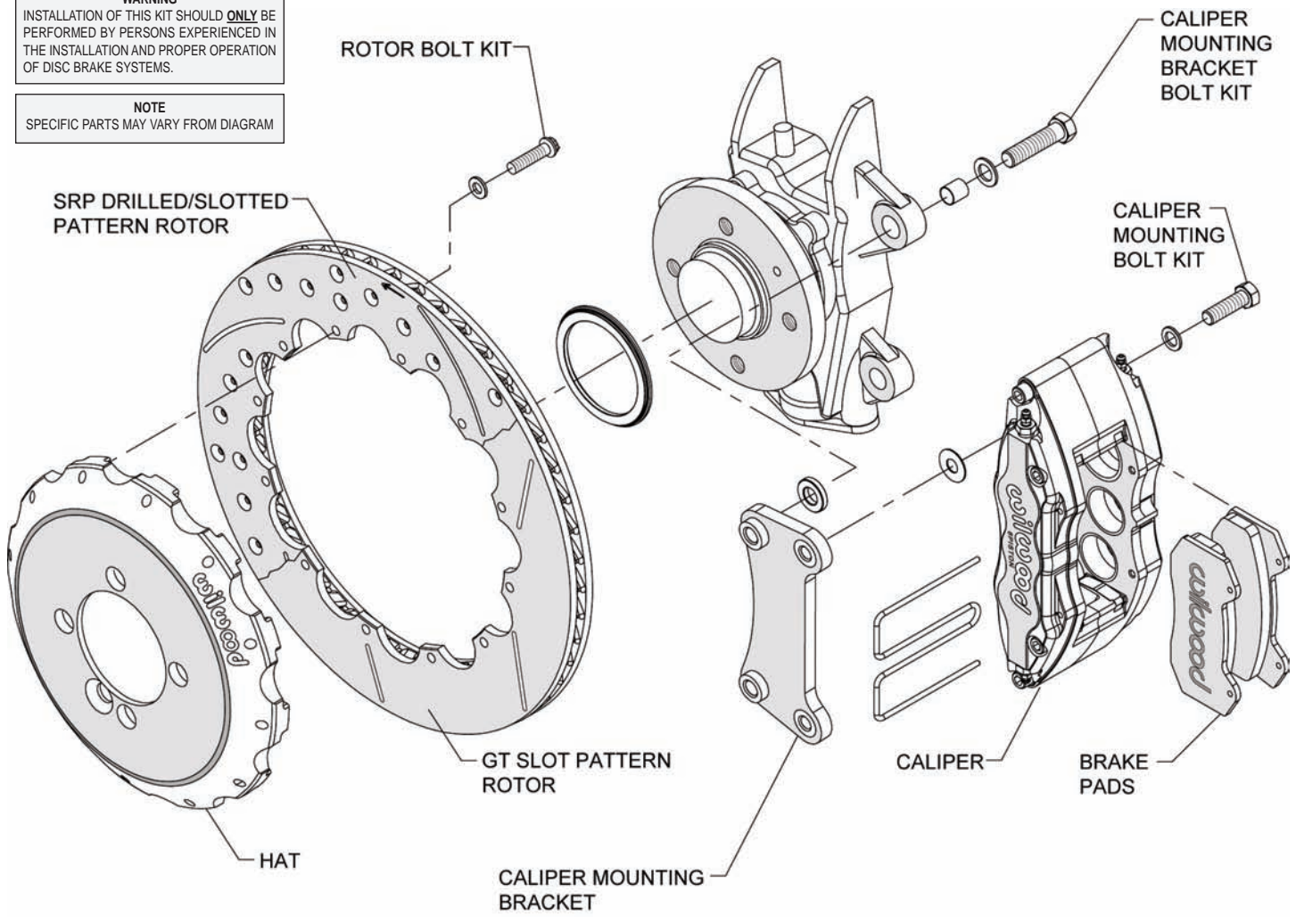
- Caliper brackets, premium grade fasteners, and alignment shims are included in every kit.
- Jacketed stainless steel braided, DOT approved flexline kits are included with each brake kit.



DynaPro 6 Kit Assembly

WARNING
 INSTALLATION OF THIS KIT SHOULD **ONLY** BE PERFORMED BY PERSONS EXPERIENCED IN THE INSTALLATION AND PROPER OPERATION OF DISC BRAKE SYSTEMS.

NOTE
 SPECIFIC PARTS MAY VARY FROM DIAGRAM



Typical Installation Diagram

ORDERING INFORMATION:

PART NUMBER	DESCRIPTION
140-13062	Front Kit, Mini Cooper, DynaPro 6 Caliper, 12.88" GT Rotor, Black Caliper
140-13062-D	Front Kit, Mini Cooper, DynaPro 6 Caliper, 12.88" SRP Drilled and Slotted Rotor, Black Caliper
140-13062-R	Front Kit, Mini Cooper, DynaPro 6 Caliper, 12.88" GT Rotor, Red Caliper
140-13062-DR	Front Kit, Mini Cooper, DynaPro 6 Caliper, 12.88" SRP Drilled and Slotted Rotor, Red Caliper