



# DYNALITE PRO SERIES FRONT HUB KIT FOR 1980 - 1987 GM "G" BODY

## Models Covered:

- General Motors "G" Body disc spindle 1980 - 1987 model years

## Kit Features:

- Upgrade from OE calipers to billet forged 4-piston Dynalite calipers available in black anodized or red powder coat finish.
- 12.19" diameter ULHP plain face or SRP drilled and slotted rotors.
- Optional DOT approved stainless steel flexline kit available in various lengths for a custom installation.
- Fully compatible with ABS and OE master cylinder output.
- BP-10 street performance brake pads standard.

## Component Features:

### Forged Billet Dynalite Lug Mount Calipers

- Calipers provide big clamping power in a truly lightweight, rigid and reliable design.
- Four stainless steel pistons provide additional corrosion resistance and the lowest heat transfer of any one-piece piston design.
- Black anodized finish provides excellent corrosion resistance and long term preservation of their high-tech style and appearance.
- Calipers are also available in a red powder coat finish.

### ULHP or SRP Directional Vane 12.19" Rotors

- Directional vane rotors provide the highest degree of cooling efficiency with increased surface area and improved air circulation between the rotor faces.
- ULHP rotors provide high performance and rugged durability for a wide range of competition, performance, and sport driving applications. Rotors are cast from premium grade, long grain carbon iron.
- Optional SRP directional drilled and slotted rotors enhance pad performance with consistent response by cleaning and venting gasses, dust, and burnt pad material. A proprietary black e-coat finish is applied to resist corrosion.

### Forged Billet Performance Hubs

- Forged billet hubs are made from premium grade alloy billets that are forged into shape under high heat and pressure, the CNC machined for a precise fit on the spindle.
- Hubs include installed bearing races and screw-on aluminum dust caps.

### Wilwood BP-10 "Smart Pads"

- All kits include BP-10 metallic-composite compound "Smart Pads". BP-10 delivers the increased friction; higher fade resistance, and longer wear of an entry-level track pad, with virtually noise and dust free performance for the street.
- Optional race-only compounds can be ordered to suit the braking requirements at all levels of severe duty and sustained high heat competition.

### Hardware and Plumbing

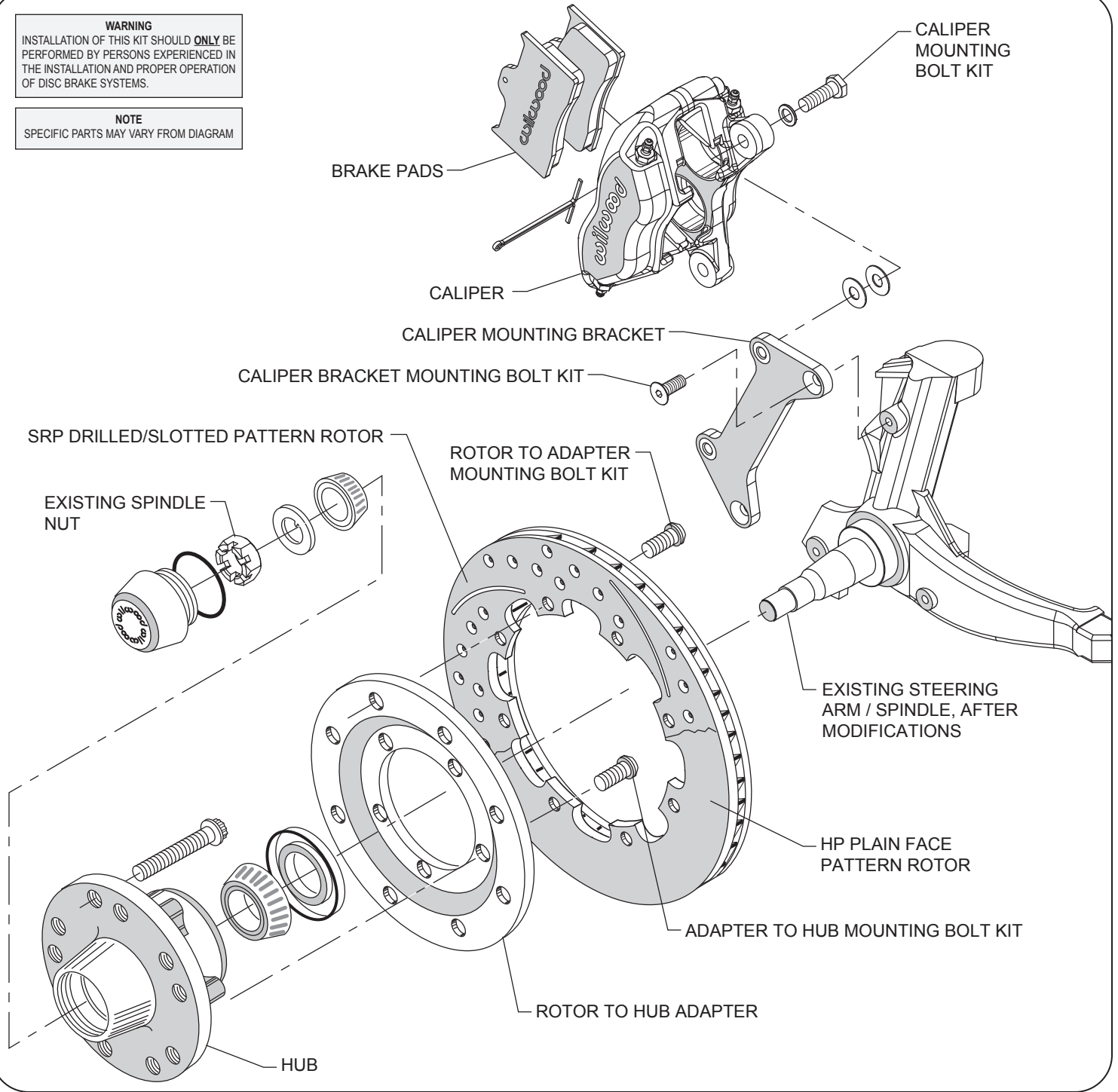
- Installation is simple. The kit is a complete bolt-on without the need to modify any of the existing brake or suspension components. Aluminum mounting brackets and premium grade hardware are supplied with detailed installation instructions in every kit.
- Stainless steel braided competition flexline kits are required to connect the Wilwood calipers to the brake system and must be ordered separately.



G Body Pro Series Front Kit with  
SRP Rotor and Red Caliper

**WARNING**  
 INSTALLATION OF THIS KIT SHOULD **ONLY** BE PERFORMED BY PERSONS EXPERIENCED IN THE INSTALLATION AND PROPER OPERATION OF DISC BRAKE SYSTEMS.

**NOTE**  
 SPECIFIC PARTS MAY VARY FROM DIAGRAM



**Typical Installation Diagram**

**ORDERING INFORMATION:**

<b>PART NUMBER</b>	<b>DESCRIPTION</b>
140-12297	Front Kit, GM "G" Body, Dynalite Caliper, 12.19" ULHP Plain Face Rotor
140-12297-D	Front Kit, GM "G" Body, Dynalite Caliper, 12.19" SRP Drilled and Slotted Rotor
140-12297-DR	Front Kit, GM "G" Body, Dynalite Caliper, 12.19" SRP Drilled & Slotted Rotor, Red Caliper
140-12297-R	Front Kit, GM "G" Body, Dynalite Caliper, 12.19" ULHP Plain Face Rotor, Red Caliper