



**WILCO**  
OFFROAD

**GET LOST**

**2018**



**DESIGNED, BUILT, AND PROUDLY MANUFACTURED IN THE USA.**

# BE READY





2017 TOYOTA 4RUNNER EQUIPPED WITH HITCHGATE SOLO TIRE CARRIER

# HITCHGATE™





# HITCHGATE™

## UNIVERSAL SPARE TIRE CARRIER

- Swing-away design
- Carries up to 40" tires
- Installs into 2" receiver
- Tow-rated secondary receiver



HITCHGATE™ OFFSET MOUNT



HITCHGATE MAX™



HITCHGATE SOLO™



THE HITCHGATE™ LINEUP OF SPARE TIRE CARRIERS FIT VIRTUALLY ANY VEHICLE WITH A 2-INCH HITCH RECEIVER. RELEASE THE SINGLE LATCH PIN AND SWING AWAY FOR FULL ACCESS TO THE VEHICLE'S CARGO SPACE. ALL HITCHGATE MODELS MAINTAIN THE VEHICLE'S TOWING CAPABILITIES UP TO 7500 LBS.



#### HITCHGATE ACCESSORIES

CARGO BASKET (HITCHGATE MAX), JERRY CAN MOUNTING KIT CLASS V ADAPTER, HI-LIFT® JACK MOUNTS, ROTOPAX®



2017 TOYOTA TACOMA EQUIPPED WITH ADV SL RACK AND TIREGATE PRERUNNER TIRE CARRIER

# TRUCK PRODUCTS



**WILCO**  
OFFROAD

10



## NEW ADV SL RACK





ADV SL COMBINES LIGHTWEIGHT ALUMINUM CONSTRUCTION WITH SLIDING CROSS BARS COMPATIBLE WITH ROOFTOP TENTS AND OTHER ROOF-MOUNTED ACCESSORIES. EXPEDITION SIDE PANELS ALLOW ATTACHMENT OF FUEL AND RECOVERY GEAR.

## ADV SL TRUCK RACK

- Lightweight aluminum construction
- High-strength grade 10.9 zinc plated steel hardware
- Bead blasted and powder coated finish
- Integrated tie-down points
- Auxiliary mounting points for LED lighting (lights not included)
- Compatible with all rooftop tents and roof-mounted accessories, while keeping the bed open for gear
- Expedition side panels allow attachment of fuel, water, Hi-Lift, MAXTRAX, axe, shovel, and other trail essentials
- Fits most full and mid-size pickups with 5' or 6' beds
- Modular design allows for standard ground shipping

WEIGHT CAPACITY: HIGHWAY 550 LBS, OFF-ROAD 275 LBS, STATIC 1100 LBS (VEHICLE IN PARK)



ADV SL RACK FITS MOST PICKUPS WITH 5' OR 6' BEDS



# ADV RACK SYSTEM

## OVER-CAB TRUCK RACK

- Easy bolt-on installation
- Front fairing for reduced wind noise
- Compatible with most popular roof mounted accessories
- Available for most full, and mid-sized trucks
- Optional tire mount

WEIGHT CAPACITY OVER CAB: HIGHWAY 400 LBS, OFF-ROAD 250 LBS, STATIC 650 LBS (VEHICLE IN PARK)




ADV FULL SIZE



ADV FULL SIZE



ADV SHOWN WITH OPTIONAL TIRE MOUNT



ADV MID SIZE WITH  
OPTIONAL TIRE MOUNT

THE ADV RACK SYSTEM IS THE PLATFORM ADVENTURE IS BUILT ON. PROVIDES CARGO MANAGEMENT WHILE KEEPING THE BED FREE FOR WORK EQUIPMENT, CAMPING GEAR, MOTORCYCLES—YOU NAME IT. COMPATIBLE WITH THULE, YAKIMA AND OTHER ROOF-MOUNTED ACCESSORIES.

## EXPEDITION READY

EXPEDITION PANELS PROVIDE ATTACHMENT POINTS FOR FUEL, WATER, HI-LIFT JACK, MAXTRAX, AX, SHOVEL, AND OTHER TRAIL ESSENTIALS.



**WILCO**  
OFFROAD



# **NEW** F1UX BUMPERS

## **F1UX FRONT BUMPER**

- Improved air flow over factory bumper
- High-clearance integrated skid plate
- Steel and aluminum alloy composite construction
- Integrated Hi-Lift jacking points
- Integrated light ports
- Integrated 1-inch D-ring mounts
- No relocation of inner cooler needed
- Designed, engineered and manufactured in the USA
- Limited Lifetime Warranty



Wilco F1UX (flux) Front Bumper for Ford F-150 Raptor improves air flow over factory bumper while providing maximum front end protection. Lightweight aluminum and steel composite construction combines with high-clearance integrated skid plate without the need for inner cooler relocation. Also includes D-Ring recovery mounts and integrated light ports.



WILCO F1UX (FLUX) FRONT AND REAR REPLACEMENT BUMPERS FOR 2017+ FORD F-150 RAPTOR . HIGH-CLEARANCE DESIGN WITH ALUMINUM AND STEEL COMPOSITE CONSTRUCTION FOR MAXIMUM STRENGTH AND REDUCED WEIGHT.

## F1UX REAR BUMPER

- Steel and aluminum alloy composite construction
- Integrated tow rated hitch receiver (high clearance)
- Integrated 1-inch D-ring mounts
- Integrated Hi-Lift jacking points
- Compatible with stock exhaust
- Auxiliary light ready
- Line-X® step plate
- Backup sensor compatible
- Factory hitch and spare tire access holes included
- Designed, engineered and manufactured in the USA
- Limited Lifetime Warranty



F1UX Rear Bumper for F-150 Raptor provides high-clearance protection and full factory utilities integration. Weight saving aluminum and steel composite construction maximizes strength while reducing weight. Line-X® step plate allows for added traction and durability. Tow-rated integrated hitch receiver allows for improved departure angle.



# TIREGATE® SERIES

## OVER-CAB TRUCK RACK

- Patented swing-away design for full use of the cargo bed
- Carries up to 40" tires on full-size trucks (35" on mid-size)
- Easy bolt-on installation
- New lockable single latch
- No drilling required

LOAD RATING 150 LBS, WEIGHT 110 LBS



TIREGATE® PR



TIREGATE® RR



TIREGATE® VT



THE PATENTED TIREGATE® LINEUP OF SPARE TIRE CARRIERS REPLACES THE FACTORY TAILGATE AND CAN SUPPORT AN OVER SIZE SPARE TIRE WHILE MAINTAINING YOUR TRUCK'S GROUND CLEARANCE AND PRECIOUS BED SPACE. REMOVE THE LATCH PINS TO EASILY OPEN THE GATE TO GAIN FULL ACCESS TO THE TRUCK BED.





JEEP WRANGLER EQUIPPED WITH MC2X FRONT AND REAR BUMPERS

# JEEP PRODUCTS



**WILCO**  
OFFROAD



# MC2X FRONT BUMPER

## FRONT BUMPER

- Extreme duty aluminum/chromoly bumper provides increased strength and reduced weight
- Easy bolt-on installation
- Modular design for customized look and function
- Four modular stinger designs available
- Winch capable with recovery bar

FITS 2007 TO 2018 WRANGLER, RUBICON AND UNLIMITED, 2-DOOR AND 4-DOOR MODELS



MC2X STEEL WITH RECOVERY BAR



FULL SIZE STINGER



ORIGINAL GRILL GUARD



# MC2X REAR BUMPER

## REAR BUMPER

- Extreme duty aluminum/chromoly bumper provides increased strength and reduced weight
- Easy bolt-on installation
- Mount up to 35" tire on standard Jeep door mount
- Add single motion tire carrier to mount up to 42" tire
- Available with aluminum or steel step plates
- Optional cargo basket and ROTOPAX mounts

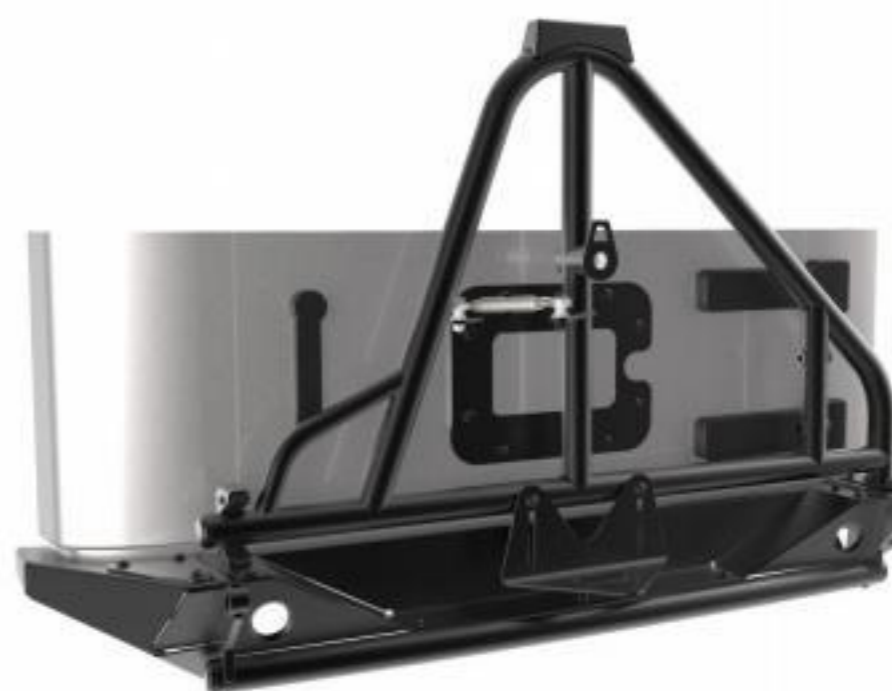
FITS 2007 TO 2018 WRANGLER, RUBICON AND UNLIMITED, 2-DOOR AND 4-DOOR MODELS



MC2X ALUMINUM STEP PLATE



MC2X STEEL STEP PLATE



SINGLE MOTION TIRE CARRIER

**WILCO**  
OFFROAD



# TOW HOOK LIGHT BAR

## RECOVERY LIGHT BAR



### TOW HOOK LIGHT BAR

THE PATENTED TOW HOOK LIGHT BAR TRANSFORMS YOUR FACTORY JEEP JK BUMPER INTO A LIGHTING AND RECOVERY DEVICE. INSTALLS IN MINUTES, OFFERS INCREASED FRONT END PROTECTION, A CLOSED RECOVERY SYSTEM, PLUS MULTIPLE AUXILIARY LIGHT MOUNT OPTIONS.

FITS 2007 TO 2018 WRANGLER, RUBICON AND UNLIMITED, 2-DOOR AND 4-DOOR MODELS



20" LED LIGHT COMBO KIT



# BED MOUNT SERIES

## TRUCK BED TIRE MOUNT

- MOUNT SPARE TIRE IN TRUCK BED
- UNIVERSAL FITMENT
- OPTIONAL RECOVERY JACK MOUNT FOR UBM24041
- MOUNT UP TO 42" TIRES



FLAT-BED MOUNT



RECOVERY JACK MOUNT (UBM24041 ONLY)



ANGLED BED MOUNT



# ACCESSORIES



HITCHSWING



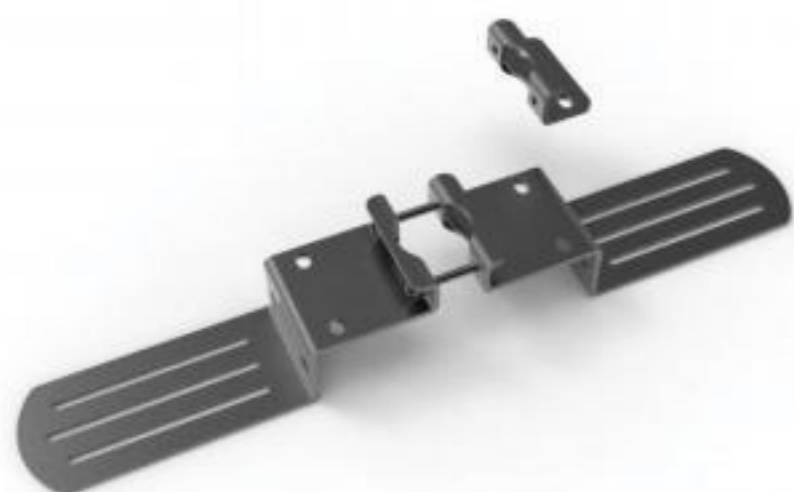
**CARGO BASKET**



**SOLO ROTOPAX / HI-LIFT MOUNT**



**QUICK FIST® MOUNTING BRACKET**



**HITCHGATE™ DUAL ROTOPAX MOUNT**



**2.5" HITCH ADAPTER**



**STEEL JERRY CAN MOUNTING KIT**



**FAIRLEAD**



**WOBBLE-FREE HITCH EXTENSION**



**D-LINK RECOVERY MOUNT**

HERITAGE SNAPBACK



# SWAG



BLOCK TEE



WILL COMPLY FLEXFIT®



4130 CHROMOLY BOTTLE OPENER



VELCRO PATCH

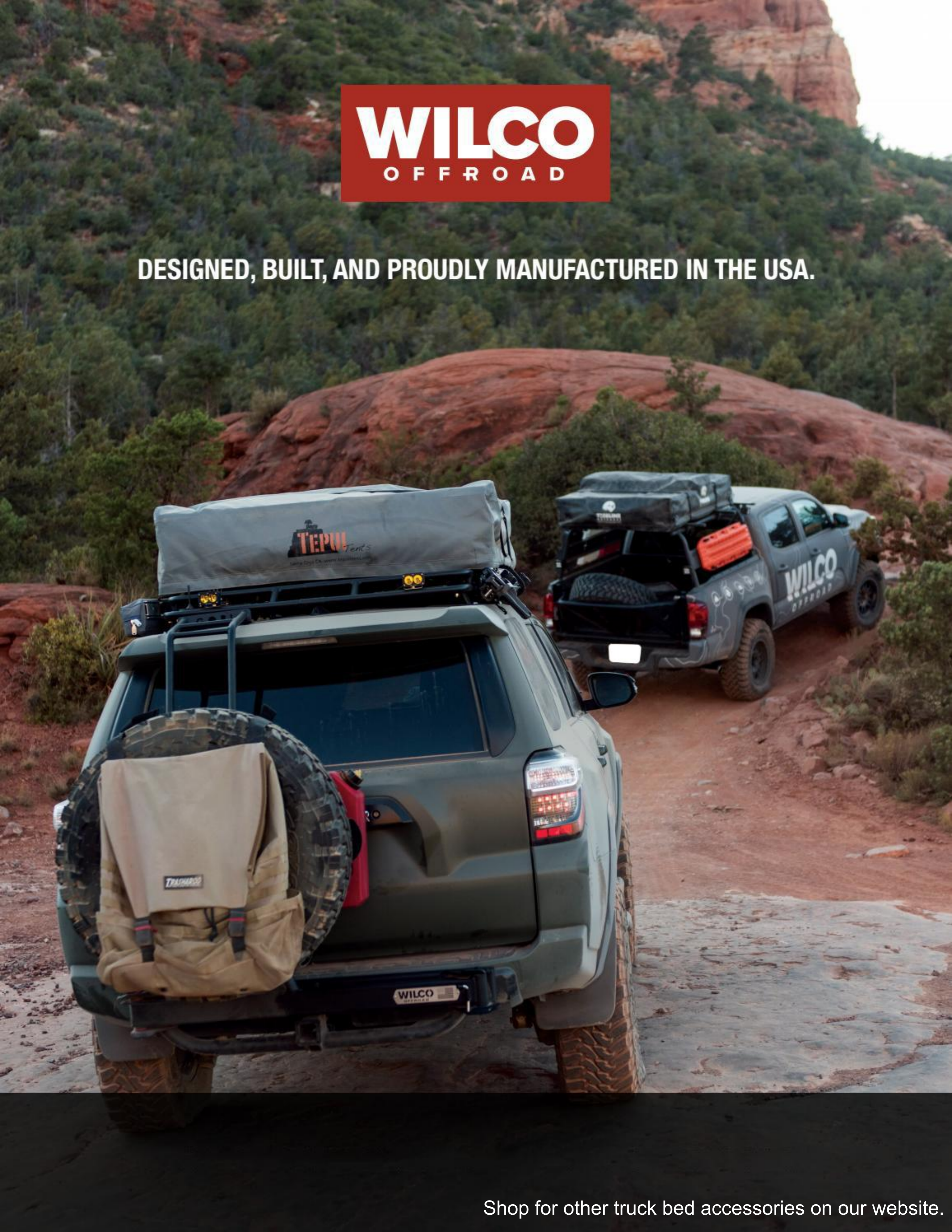
**GET LOST. BE READY.**



**WILCO**  
OFFROAD



DESIGNED, BUILT, AND PROUDLY MANUFACTURED IN THE USA.



Shop for other truck bed accessories on our website.