

Installation Instructions

ACTIVE TRAILING ARM PIVOT BUSHING

These instructions are a guide to successfully install this bushing in the vehicle. Soapy water and large nut, bolt and piece of flat steel is required - (see images 5&6). Alternatively remove the trailing arm from the vehicle and utilize a press.

Application:
HONDA CIVIC / CRV
/ INTEGRA / CRX

1. Safely raise the rear of the vehicle - we suggest using a 4 post hoist.
2. Unbolt the hand brake cable bracket, front toe control arm inner point and the 2 pivot bushing mounting bolts - see image 1. **Note: You may have to remove the brake line on CRV models.**

Note: You may need to remove rear section of exhaust when changing RHS bushing.



Image 1

Front toe control arm



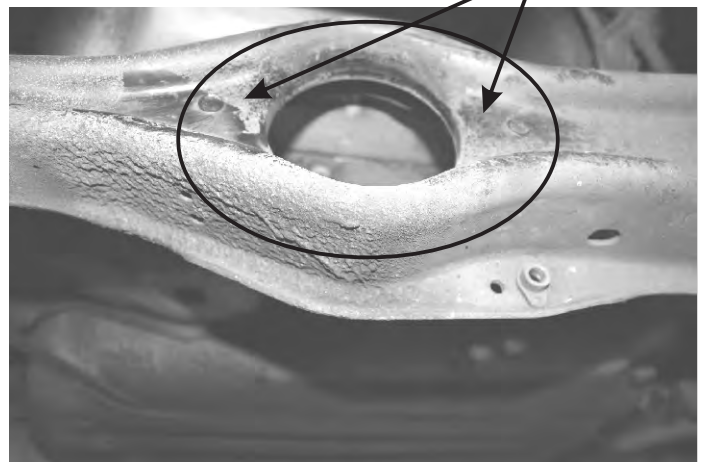
Image 2

3. Slowly lower the trailing arm/wheel down enough to remove the old bushing.
4. The old bushing can be knocked out with a hammer (due to its 'tapered' shell design) - see image 2 and 3.

Image 3



Image 4



5. Once old bushing is removed it is important the arm is completely clean - remove any loose material from around the eyelet on both sides - see image 4.

Fitting Instructions

ACTIVE TRAILING ARM PIVOT BUSHING

These instructions are a guide to successfully install this bushing in the vehicle. Soapy water and large nut, bolt and piece of flat steel is required - (see images 5&6). Alternatively remove the trailing arm from the vehicle and utilize a press.

Application:
HONDA CIVIC / CRV
/ INTEGRA / CRX

6. Soapy water is required to successfully install this bushing. However, it is important to only use a small amount of soap.
7. This bushing can be popped in using a large nut, bolt, some big washers and a piece of flat steel with a hole - see image 6 (OR alternatively remove the arm and press bushing).



Image 5



Image 6

8. Wind the bushing in until it pops in - be sure bushing flange has completely been drawn through. Also, confirm bushing isn't twisted once installed.
9. Insert supplied steel pin and bolt to chassis, no grease is required - see image 8.

Image 7



Image 8



10. Tighten all bolts to OE specification, and bleed brakes if required.
11. Immediately carry out wheel alignment. Re check all bolts after 100km's travelled.