

Installation Instructions

Performance Control Arms

N.B: This instruction sheet should be used in conjunction with the workshop manual and proper safety procedures followed.

Application: VW/Audi 7th generation 2012-on
Always refer current catalogue for complete catalogue listing

Contents: 2x Performance aluminium control arms

These arms offer substantial caster increase.

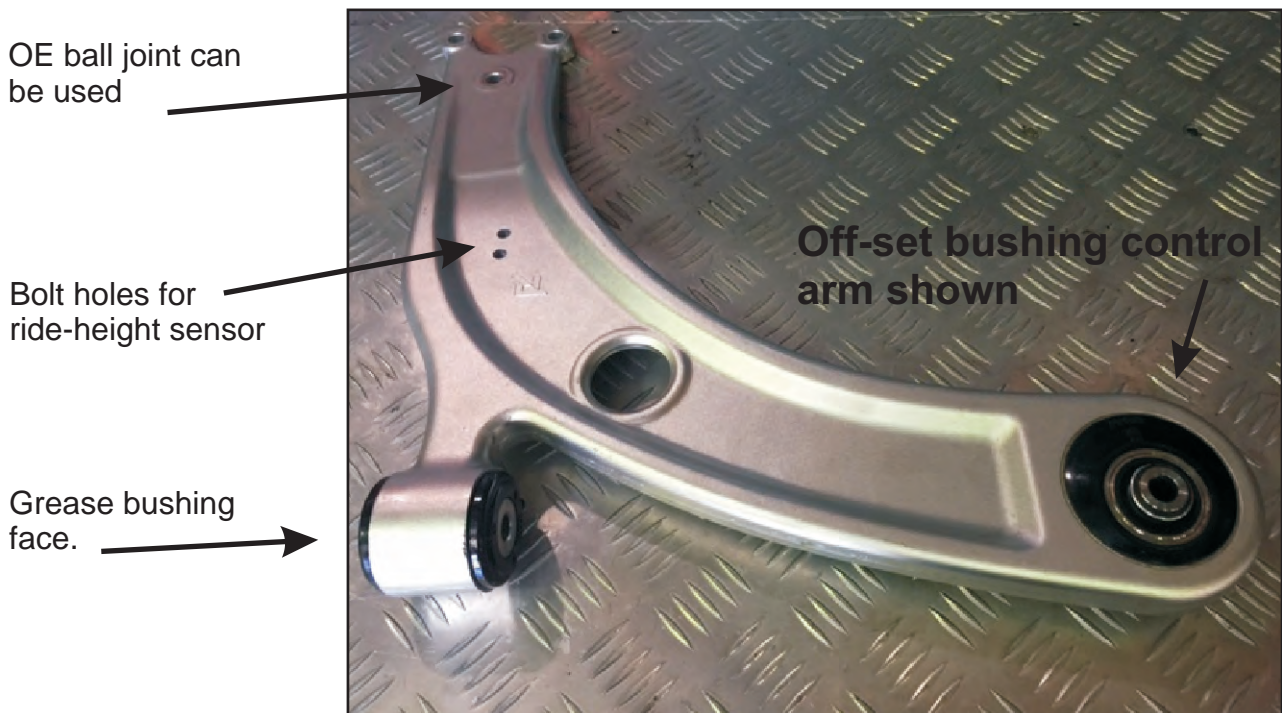
- arms supplied with On-centre bushing offer 1.5-2.0 deg positive
- arms supplied with Off-set bushing offer 2.5-3.0 deg positive
- arms offer minor camber change - 0.25-0.5 deg negative

It is suggested a wheel alignment be carried out prior to install.

1. Raise vehicle evenly and safely support.
2. Remove front wheels and un-bolt ride-height sensor brackets.
3. Un-bolt original control arms (the existing ball joints can be utilized).

Confirm LH and RH arms - there will be a label on each arm.

4. Grease the front bushing face on both sides with supplied grease.
5. Bolt up arms to vehicle.
6. A wheel alignment must be performed after install.



Page 1 of 2

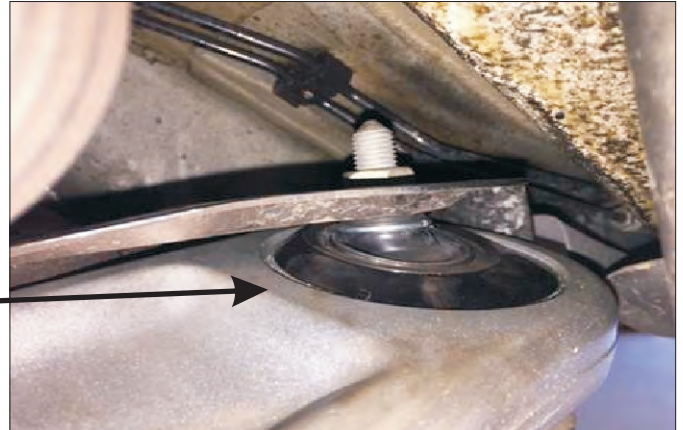
N.B: It is recommended that a licenced workshop or tradesperson carry out the above procedure and that workshop manual and relevant safety procedures are followed in addition to the above.

Installation Instructions

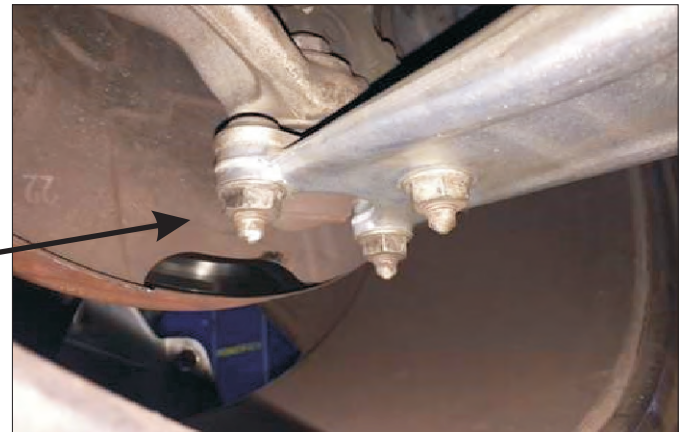
Performance Control Arms

N.B: This instruction sheet should be used in conjunction with the workshop manual and proper safety procedures followed.

Off-set bushing shown with vehicle lifted - tighten bolt to OE manufacturers specification.



OE ball joint shown - re-use OE flange nuts only - tighten to OE specification.



Note wheel position after install.

These control arms have been tested and proven with OE 19 inch wheels with minor ride height reduction.

Vehicles lowered extensively and/or have been fitted with after-market wheels - check for any clearance concerns with inner guard.



Page 2 of 2

N.B: It is recommended that a licenced workshop or tradesperson carry out the above procedure and that workshop manual and relevant safety procedures are followed in addition to the above.