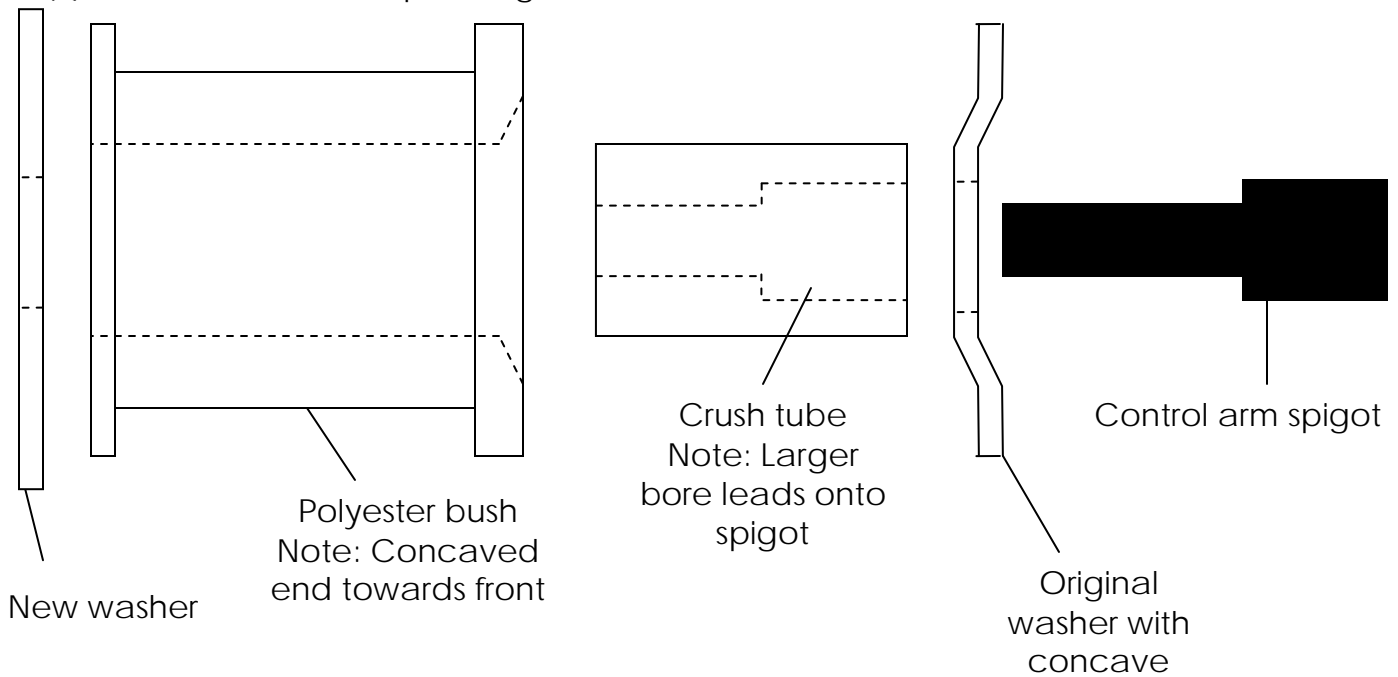


FRONT LOWER CONTROL ARM

- (1) Remove lower control arm from vehicle
- (2) Remove lower control arm inner rear bush from arm and retain original bracket and rear concave washer. NOTE: The concave washer may be loose or fixed on the arm depending on the model.
- (3) Mount new bush as per diagram below.



- (4) Ensure to lubricate the inner bore of the bush and the working faces of the bush (ie. where the bush contacts with the face of each washer).
- (5) Refit bracket and install arm into vehicle
- (6) Tighten nuts to manufacturers' specifications

This procedure must be carried out by a qualified person