

**WHITELINE**  
*Flat out*

# Installation Guide

## Rear Diff Mount Bushings

Suits : BMW E90

(Always refer to the current catalogue for complete application listings).  
N.B. This install guide should be used in conjunction with the workshop manual.

### KIT CONTENTS:

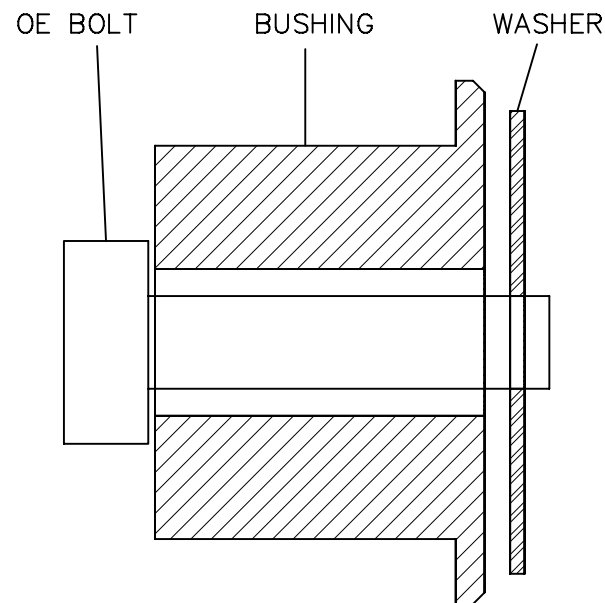
1x large bushing  
4x small bushing  
1x large washer  
2x small washer  
3x tubes

### NOTE:

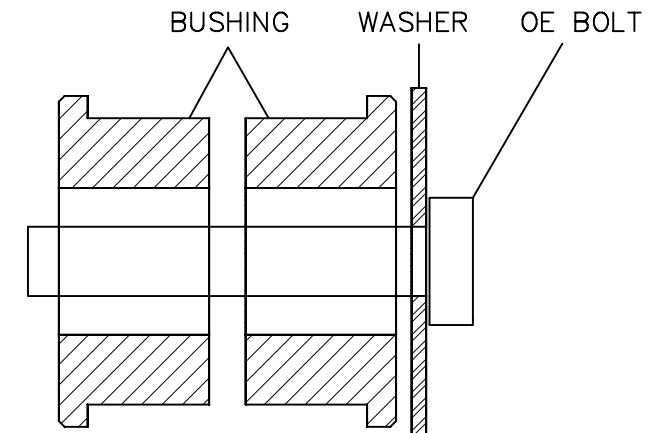
Push the rear bushing in from the front towards the rear of the car and place the supplied washer between the bushing and diff.

Lubricate only ID of bushings  
Tighten all bolts to OE spec  
Re check after initial 100km

### Rear Mount



### Front Mount



VIEW FROM RIGHT HAND SIDE OF VEHICLE

N.B. It is recommended that a licenced workshop or trades person carry out the above procedure and that workshop manual and relevant safety procedures are followed in addition to the above.