

Fitting Instructions BNR21 & BNR21Z

WHITELINE

Flat out

Code: Z187

Application:

Nissan Pulsar N15 95-00 with [beam rear axle](#)

Nissan Sentra B14 95-00 with beam rear axle

Full kit rear swaybar to suit all vehicles.

Always refer to current catalogue for complete application listing.

Specification:

BNR21 - 20mm, non-adjustable full kit swaybar
BNR21Z - 20mm, 3-hole adjustable full kit swaybar

Contents:

- 1) 1 x swaybar
- 2) 2 x D-bush
- 3) 2 x D-bush bracket (saddle)
- 4) 2 x 3/8 inch * 2 inch long bolt
- 5) 4 x M8 x 30mm long bolt
- 6) 2 x 3/8 inch x 1.75 inch bolt
- 7) 4 x 3/8 inch flange nut
- 8) 4 x 3/8 inch nyloc nut
- 9) 2 x U-bolt
- 10) 4 x 3/8 inch flat washer
- 11) 4 x 3/8 inch flat washer
- 12) 4 x 5/16 inch flat washer
- 13) 4 x 5/16 inch spring washer
- 14) 2 x U-bolt
- 15) 2 x axle mounting plate
- 16) 2 x link to chassis bracket
- 17) 2 x double eye link assemblies with bushes
- 18) 1 x grease bag

Fitting:

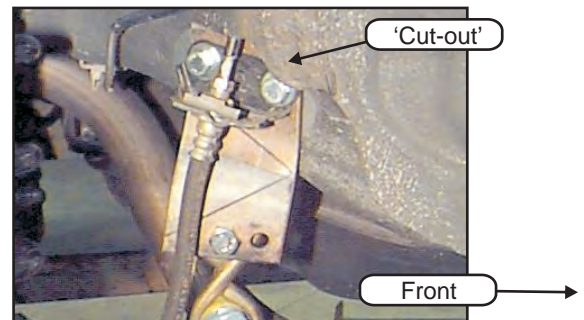
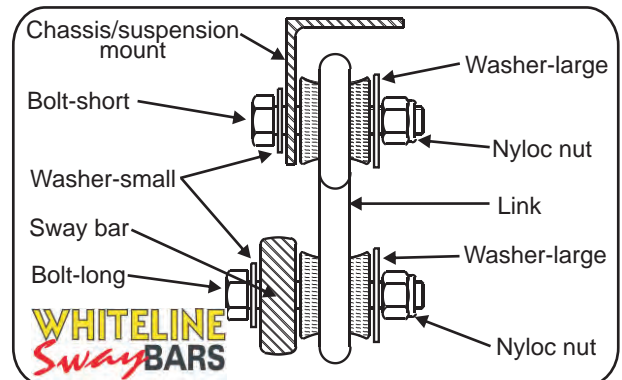
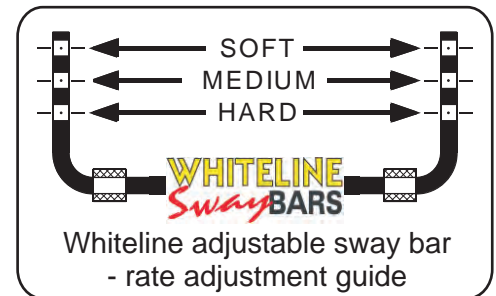
Please read complete fitting instructions and check kit components prior to fitment.

1. Raise the rear of vehicle and support on chassis stands.
2. Remove rear road wheels.
3. Remove brake line bracket to chassis bolts.
4. Place link bracket (16) between brake line bracket and chassis, and tighten using new bolts and washers supplied.

NOTE: Link bracket orientation;

- cut-off corner must face up and towards the front of car
 - bottom section to be close to parallel to the centre of the car
- Refer to photo for correct location.

5. Grease D-bushes with grease and fit onto the swaybar.
6. Attach the swaybar to the axle using U-bolts and hardware supplied.
7. Refit road wheels, and lower the car. Further fitting must be done with the vehicle at normal ride height. Do not drive at this stage.
8. Connect the swaybar ends to the chassis brackets using links and hardware supplied. Refer to diagram for correct location of all components. On adjustable swaybar, refer to Adjustment Guide to select the desired hole.
9. Tighten all hardware, road test, and re-tension all hardware.
10. Check and re-tension all fittings again after 100km's but no more than 200km's.
11. For noise and friction free operation, carry out periodic inspections and maintain proper bush lubrication.



Warning: Please drive carefully while you accustom yourself to the changed vehicle behaviour.