



SIGNATURE OF QUALITY

AUTOMOTIVE PRODUCTS, INC.

INSTRUCTIONS

APPLICATION: 2007-2010 JEEP WRANGLER
PART NUMBER: 23-3315, 23-3310, 21-3310, 21-3315

ITEM	QUANTITY	DESCRIPTION	TOOLS NEEDED
1	2	STEP BARS	10MM SOCKET
2,3	2	FRONT MOUNTING BRACKETS(2) DRIVERS SIDE, (3) PASSENGER SIDE	10MM WRENCH
4,5	2	REAR MOUNTING BRACKETS(4) DRIVERS SIDE, (5) PASSENGER SIDE	12MM SOCKET
6	4	M10 NUT PLATES	12MM WRENCH
7	4	M10 HEX BOLTS	15MM SOCKET
8	8	Q	15MM WRENCH
9	4	M10 FLAT WASHERS	RATCHET
10	4	M10 LOCK NUTS	TORQUE WRENCH
11	8	M8 FLAT WASHERS	
12	8	M8 LOCK WASHERS	
13	8	M8 BUTTON HEAD SCREWS	
14	8	M6 FLAT WASHER LARGE DIAMETER	
15	8	M6 FLAT WASHER SMALL DIAMETER	
16	8	M6 NYLON INSERT LOCK NUT	

ITEM	QUANTITY	DESCRIPTION	TOOLS NEEDED
1	2	STEP BARS	10MM SOCKET
2,3	2	FRONT MOUNTING BRACKETS(2) DRIVERS SIDE, (3) PASSENGER SIDE	10MM WRENCH
4,5	2	REAR MOUNTING BRACKETS(4) DRIVERS SIDE, (5) PASSENGER SIDE	12MM SOCKET
6	4	M10 NUT PLATES	12MM WRENCH
7	4	M10 HEX BOLTS	15MM SOCKET
8	8	Q	15MM WRENCH
9	4	M10 FLAT WASHERS	RATCHET
10	4	M10 LOCK NUTS	TORQUE WRENCH
11	8	M8 FLAT WASHERS	
12	8	M8 LOCK WASHERS	
13	8	M8 BUTTON HEAD SCREWS	
14	8	M6 FLAT WASHER LARGE DIAMETER	
15	8	M6 FLAT WASHER SMALL DIAMETER	
16	8	M6 NYLON INSERT LOCK NUT	



SIGNATURE OF QUALITY



SIGNATURE OF QUALITY

AUTOMOTIVE PRODUCTS, INC.

INSTRUCTIONS

APPLICATION: 2007-2010 JEEP WRANGLER
PART NUMBER: 23-3315, 23-3310

ITEM	QUANTITY	DESCRIPTION	TOOLS NEEDED
1	2	STEP BARS	10MM SOCKET
2,3	2	FRONT MOUNTING BRACKETS(2) DRIVERS SIDE, (3) PASSENGER SIDE	10MM WRENCH
4,5	2	REAR MOUNTING BRACKETS(4) DRIVERS SIDE, (5) PASSENGER SIDE	12MM SOCKET
6	4	M10 NUT PLATES	12MM WRENCH
7	4	M10 HEX BOLTS	15MM SOCKET
8	8	Q	15MM WRENCH
9	4	M10 FLAT WASHERS	RATCHET
10	4	M10 LOCK NUTS	TORQUE WRENCH
11	8	M8 FLAT WASHERS	
12	8	M8 LOCK WASHERS	
13	8	M8 BUTTON HEAD SCREWS	
14	8	M6 FLAT WASHER LARGE DIAMETER	
15	8	M6 FLAT WASHER SMALL DIAMETER	
16	8	M6 NYLON INSERT LOCK NUT	

1. Remove all contents from box. Verify that all parts listed are present and free from damage. Read and understand all instructions before attempting installation.
2. From underneath the vehicle remove tape from front slots in drivers side rocker panel.
3. Insert M10 nut plate through slot and align nut with the round hole, attach drivers side front mounting bracket using (1) M10 hex bolt, (1) M10 washer, and (1) M10 lock nut. Do not fully tighten at this time
4. Align bracket with the holes in the pinch weld and attach with (2) M6 hex bolts, (4) M6 flat washers note: the smaller od washer is used for behind the pinch weld and the larger od flat washer is used for in front of the pinch weld. And (2) M6 nylock nuts. Do not fully tighten at this time
5. Repeat steps 2-4 for all other brackets
6. Take drivers side step bar and align it with the front and rear mounting brackets, attach the bar using (4) M8 hex nuts and (4) M8 flat washers. Do not fully tighten at this time
7. Repeat step 6 for passenger side bar
8. Align bars to fit and tighten all hardware at this time
9. Torque all M10 hardware to 25-30 ft-lbs, all M8 hardware to 15-20 ft-lbs, and all M6 hardware to 10-15 ft-lbs



SIGNATURE OF QUALITY



SIGNATURE OF QUALITY

AUTOMOTIVE PRODUCTS, INC.

INSTRUCTIONS

APPLICATION: 2007-2010 JEEP WRANGLER
PART NUMBER: 23-3315, 23-3310

1. Remove all contents from box. Verify that all parts listed are present and free from damage. Read and understand all instructions before attempting installation.
2. From underneath the vehicle remove tape from front slots in drivers side rocker panel.
3. Insert M10 nut plate through slot and align nut with the round hole, attach drivers side front mounting bracket using (1) M10 hex bolt, (1) M 10 washer, and (1) M10 lock nut. Do not fully tighten at this time
4. Align bracket with the holes in the pinch weld and attach with (2) M6 hex bolts, (4) M6 flat washers note: the smaller od washer is used for behind the pinch weld and the larger od flat washer is used for in front of the pinch weld. And (2) M6 nylock nuts. Do not fully tighten at this time
5. Repeat steps 2-4 for all other brackets
6. Take drivers side step bar and align it with the front and rear mounting brackets, attach the bar using (4) M8 hex nuts and (4) M8 flat washers. Do not fully tighten at this time
7. Repeat step 6 for passenger side bar
8. Align bars to fit and tighten all hardware at this time
9. Torque all M10 hardware to 25-30 ft-lbs, all M8 hardware to 15-20 ft-lbs, and all M6 hardware to 10-15 ft-lbs

1. Remove all contents from box. Verify that all parts listed are present and free from damage. Read and understand all instructions before attempting installation.
2. From underneath the vehicle remove tape from front slots in drivers side rocker panel.
3. Insert M10 nut plate through slot and align nut with the round hole, attach drivers side front mounting bracket using (1) M10 hex bolt, (1) M 10 washer, and (1) M10 lock nut. Do not fully tighten at this time
4. Align bracket with the holes in the pinch weld and attach with (2) M6 hex bolts, (4) M6 flat washers note: the smaller od washer is used for behind the pinch weld and the larger od flat washer is used for in front of the pinch weld. And (2) M6 nylock nuts. Do not fully tighten at this time
5. Repeat steps 2-4 for all other brackets
6. Take drivers side step bar and align it with the front and rear mounting brackets, attach the bar using (4) M8 hex nuts and (4) M8 flat washers. Do not fully tighten at this time
7. Repeat step 6 for passenger side bar
8. Align bars to fit and tighten all hardware at this time
9. Torque all M10 hardware to 25-30 ft-lbs, all M8 hardware to 15-20 ft-lbs, and all M6 hardware to 10-15 ft-lbs



SIGNATURE OF QUALITY

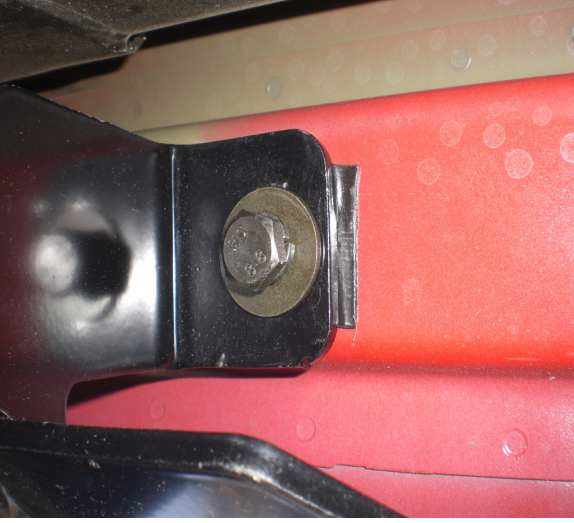
Westin

SIGNATURE OF QUALITY

AUTOMOTIVE PRODUCTS, INC.

INSTRUCTIONS

APPLICATION: 2007-2010 JEEP WRANGLER
PART NUMBER: 23-3315, 23-3310



Westin

SIGNATURE OF QUALITY

If you're looking for quality side steps and nerf bars, visit our website.