



SIGNATURE OF QUALITY

AUTOMOTIVE PRODUCTS, INC.

INSTRUCTIONS

APPLICATION: 2004-2009 CHEVY COLORADO/ GMC CANYON CREW CAB

PART NUMBER: 23-3150, 23-3153

ITEM	QUANTITY	DESCRIPTION	TOOLS NEEDED
1,2	2	SIDEBARS (1) DRIVERS SIDE, (2) PASSENGER SIDE	3/4 SOCKET
3,4	2	FRONT MOUNTING BRACKETS (3) DRIVERS SIDE, (4) PASSENGER	3/4 WRENCH
5,6	2	REAR MOUNTING BRACKETS (5) DRIVERS SIDE, (6) PASSENGER SIDE	18MM SOCKET
7,8	2	FRONT SUPPORT BRACKETS (7) DRIVERS SIDE, (8) PASSENGER SIDE	18MM WRENCH
9,10	2	REAR SUPPORT BRACKET (9) DRIVERS SIDE, (10) PASSENGER SIDE	RATCHET
11	4	1/2 X 2" HEX HEAD BOLTS	TORQUE WRENCH
12	4	1/2 LOCK WASHERS	
13	4	1/2 FLAT WASHERS	
14	4	M14 FLAT WASHERS	
15	2	M12 NUT PLATES	
16	2	M12 X 120MM HEX BOLTS	
17	2	M12 X 30MM HEX BOLTS	
18	6	M12 FLAT WASHERS	
19	4	M12 LOCK WASHERS	
20	2	M12 HEX NUTS	



SIGNATURE OF QUALITY



SIGNATURE OF QUALITY

AUTOMOTIVE PRODUCTS, INC.

INSTRUCTIONS

APPLICATION: 2004-2009 CHEVY COLORADO/ GMC CANYON CREW CAB
PART NUMBER: 23-3150, 23-3153

1. Remove all contents from box. Verify all parts are present and free from damage. Read instructions carefully and understand before attempting installation
2. On the drivers side of the vehicle, remove the front body mount bolt from underneath the vehicle. Once removed drive the bolt out of the factory bushing save both the bushing and bolt.
3. Take the drivers side mounting bracket and bolt it onto the vehicle using the factory bolt from the above step. The bracket will mount over the bushing. Do not tighten fully at this time.
4. Take the drivers side front support bracket and insert (1) 12MM X 120MM hex bolt and , (1) 12MM flat washer through the mounting slot. Place (2) M14 flat washers onto the M12 hex bolt between the support bracket and the factory body mount. Insert the M12 hex head bolt up through the holes in the factory body mount and fasten with (1) M12 lock washer and, (1) M12 hex nut. Do not tighten fully at this time.
5. Locate the rear mounting brackets and mount them to the vehicle using the factory body mount bolts. The bracket will mount over the bushing. Refer to step 3.
6. Insert one M12 nut plate through the bottom of the front face of the leaf spring mounting bracket and align it with the factory oval hole.
7. With the 90 degree bend towards the side of the vehicle and facing up, attach the drivers side support bracket to the nut plate with (1) M12 X 30MM hex head bolt, (1) M12 lock washer and, (1) flat washer. Do not fully tighten at this time.
8. Position the drivers sidebar up to the mounting brackets and align with the mounting holes. Attach with (2) 1/2" X 2" hex head bolts, (2) 1/2" lock washers and, (2) 1/2" flat washers. Do not fully tighten at this time.
9. Adjust sidebar properly then tighten all hardware at this time.
10. Repeat steps 2-9 for the passenger side.

FINISH PROTECTION

Westin products have a high quality finish that must be cared for like any other exposed finish on the vehicle. Protect the finish with a non-abrasive automotive wax, (e.g. Pure Carnauba) on a regular basis. The use of any soap, polish or wax that contains an abrasive is detrimental, as the compounds scratch the finish and open it to corrosion.

1. Remove all contents from box. Verify all parts are present and free from damage. Read instructions carefully and understand before attempting installation
2. On the drivers side of the vehicle, remove the front body mount bolt from underneath the vehicle. Once removed drive the bolt out of the factory bushing save both the bushing and bolt.
3. Take the drivers side mounting bracket and bolt it onto the vehicle using the factory bolt from the above step. The bracket will mount over the bushing. Do not tighten fully at this time.
4. Take the drivers side front support bracket and insert (1) 12MM X 120MM hex bolt and , (1) 12MM flat washer through the mounting slot. Place (2) M14 flat washers onto the M12 hex bolt between the support bracket and the factory body mount. Insert the M12 hex head bolt up through the holes in the factory body mount and fasten with (1) M12 lock washer and, (1) M12 hex nut. Do not tighten fully at this time.
5. Locate the rear mounting brackets and mount them to the vehicle using the factory body mount bolts. The bracket will mount over the bushing. Refer to step 3.
6. Insert one M12 nut plate through the bottom of the front face of the leaf spring mounting bracket and align it with the factory oval hole.
7. With the 90 degree bend towards the side of the vehicle and facing up, attach the drivers side support bracket to the nut plate with (1) M12 X 30MM hex head bolt, (1) M12 lock washer and, (1) flat washer. Do not fully tighten at this time.
8. Position the drivers sidebar up to the mounting brackets and align with the mounting holes. Attach with (2) 1/2" X 2" hex head bolts, (2) 1/2" lock washers and, (2) 1/2" flat washers. Do not fully tighten at this time.
9. Adjust sidebar properly then tighten all hardware at this time.
10. Repeat steps 2-9 for the passenger side.

FINISH PROTECTION

Westin products have a high quality finish that must be cared for like any other exposed finish on the vehicle. Protect the finish with a non-abrasive automotive wax, (e.g. Pure Carnauba) on a regular basis. The use of any soap, polish or wax that contains an abrasive is detrimental, as the compounds scratch the finish and open it to corrosion.

1. Remove all contents from box. Verify all parts are present and free from damage. Read instructions carefully and understand before attempting installation
2. On the drivers side of the vehicle, remove the front body mount bolt from underneath the vehicle. Once removed drive the bolt out of the factory bushing save both the bushing and bolt.
3. Take the drivers side mounting bracket and bolt it onto the vehicle using the factory bolt from the above step. The bracket will mount over the bushing. Do not tighten fully at this time.
4. Take the drivers side front support bracket and insert (1) 12MM X 120MM hex bolt and , (1) 12MM flat washer through the mounting slot. Place (2) M14 flat washers onto the M12 hex bolt between the support bracket and the factory body mount. Insert the M12 hex head bolt up through the holes in the factory body mount and fasten with (1) M12 lock washer and, (1) M12 hex nut. Do not tighten fully at this time.
5. Locate the rear mounting brackets and mount them to the vehicle using the factory body mount bolts. The bracket will mount over the bushing. Refer to step 3.
6. Insert one M12 nut plate through the bottom of the front face of the leaf spring mounting bracket and align it with the factory oval hole.
7. With the 90 degree bend towards the side of the vehicle and facing up, attach the drivers side support bracket to the nut plate with (1) M12 X 30MM hex head bolt, (1) M12 lock washer and, (1) flat washer. Do not fully tighten at this time.
8. Position the drivers sidebar up to the mounting brackets and align with the mounting holes. Attach with (2) 1/2" X 2" hex head bolts, (2) 1/2" lock washers and, (2) 1/2" flat washers. Do not fully tighten at this time.
9. Adjust sidebar properly then tighten all hardware at this time.
10. Repeat steps 2-9 for the passenger side.

FINISH PROTECTION

Westin products have a high quality finish that must be cared for like any other exposed finish on the vehicle. Protect the finish with a non-abrasive automotive wax, (e.g. Pure Carnauba) on a regular basis. The use of any soap, polish or wax that contains an abrasive is detrimental, as the compounds scratch the finish and open it to corrosion.



SIGNATURE OF QUALITY

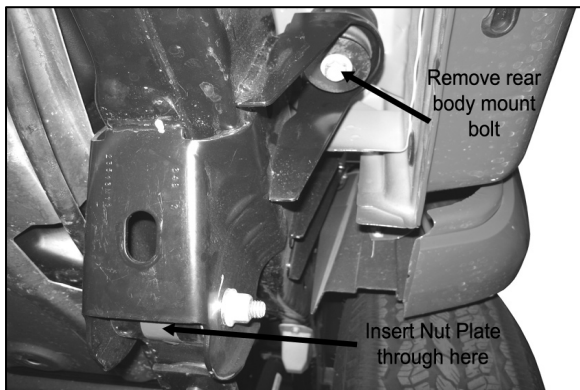
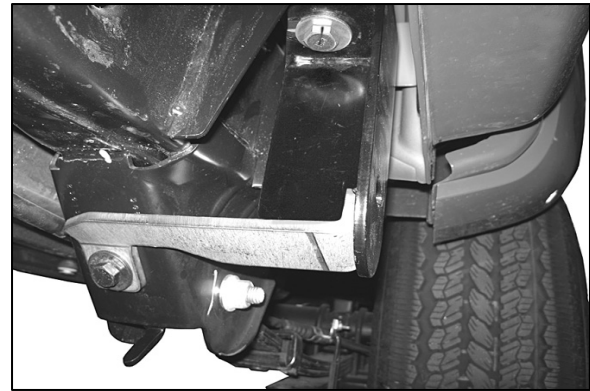
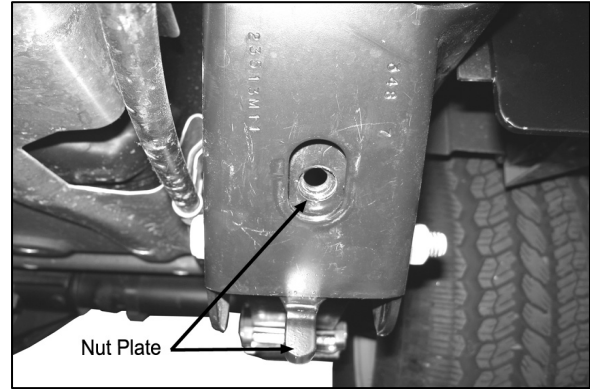
Westin

SIGNATURE OF QUALITY

AUTOMOTIVE PRODUCTS, INC.

INSTRUCTIONS

APPLICATION: 2004-2009 CHEVY COLORADO/ GMC CANYON CREW CAB
PART NUMBER: 23-3150, 23-3153



Westin

SIGNATURE OF QUALITY

When it comes to quality side steps and nerf bars, Westin is the brand you can depend on.