



SIGNATURE OF QUALITY

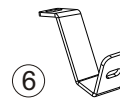
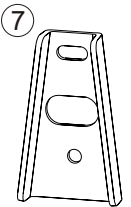
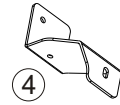
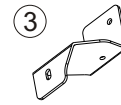
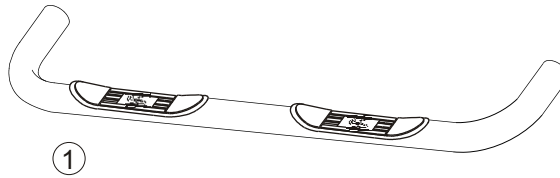
INSTRUCTIONS

APPLICATION: 1999-06 TOYOTA TUNDRA EXTENDED CAB

AUTOMOTIVE PRODUCTS, INC.

STEP BAR ASSEMBLIES

23-2510
23-2515



ITEM	QTY	CONTENTS	TOOLS
1,2	2	STEP BAR, PASSENGER (1) AND DRIVER (2)	3/4" SOCKET 17MM SOCKET 19MM SOCKET 16MM WRENCH 18MM WRENCH 6" EXTENSION RATCHET TORQUE WRENCH
3,4	2	FRONT BRACKET, PASSENGER (3) AND DRIVER (4)	
5,6	2	FRONT BRACKET SUPPORT, PASSENGER (5) AND DRIVER (6)	
7	2	REAR BRACKET	
8	2	M12-1.75 X 140MM HEX HEAD BOLT	
9	2	M12-1.75 X 40MM HEX HEAD BOLT	
10	8	M12 FLAT WASHER	
11	4	M12 LOCK WASHER	
12	4	M12-1.75 HEX NUT	
13	2	M10-1.50 X 30MM HEX HEAD BOLT	
14	4	M10 FLAT WASHER	
15	2	M10 LOCK WASHER	
16	2	M10-1.50 HEX NUT	
17	4	1/2-13 X 2.00 HEX HEAD BOLT	
18	4	1/2" FLAT WASHER	
19	4	1/2" LOCK WASHER	

- STEP 1. Remove the contents from box and check for damage. Verify all parts are present. Read instructions completely before beginning.
- STEP 2. Locate the rectangular holes in frame towards the front of the vehicle. Attach front brackets as shown. Hand tighten. **SEE FIGURE 2**
- STEP 3. Insert M10 bolt through the existing hole at the rear of the body mount. Attach the front bracket support as shown. **SEE FIGURES 1 AND 2.**
- STEP 4. Attach rear brackets as shown. Hand tighten. **SEE FIGURE 2**
- STEP 5. Attach step bars as shown. Hand tighten. **SEE FIGURE 2.**
- STEP 6. Make sure step bar and brackets are properly aligned with vehicle and tighten fasteners. Recommended torque value is 64 Ft. Lbs. for 1/2" fasteners, 32 Ft. Lbs. for M10 fasteners and 55 Ft. Lbs. for M12 fasteners.

FINISH PROTECTION

Westin products have a high quality finish that must be cared for like any other exposed finish on the vehicle. Protect the finish with a non-abrasive automotive wax, (e.g. Pure Carnauba) on a regular basis. The use of any soap, polish or wax that contains an abrasive is detrimental, as the compounds scratch the finish and open it to corrosion.

INSTALLATION VIEW OF PASSENGER SIDE,
DRIVER SIDE OPPOSITE

FORWARD
←

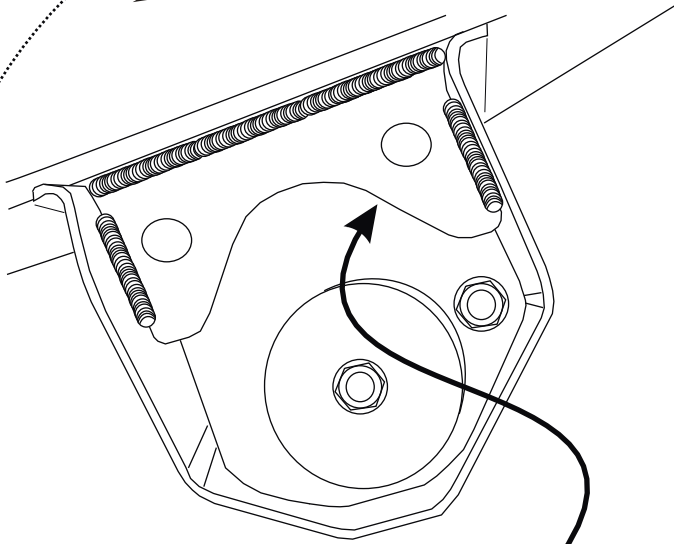


FIGURE 1

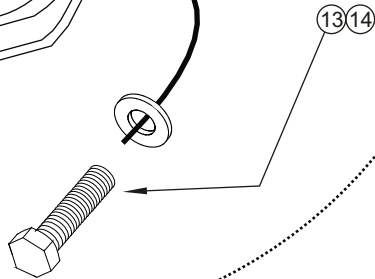


FIGURE 2

