



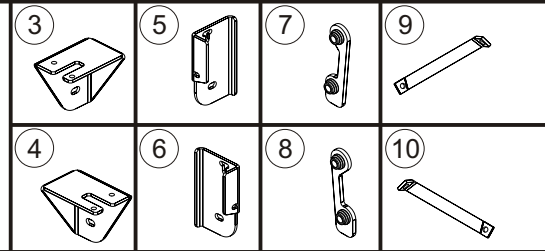
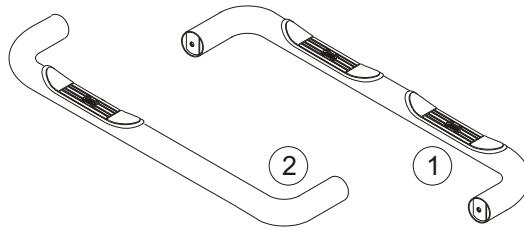
AUTOMOTIVE PRODUCTS, INC.

# INSTRUCTIONS

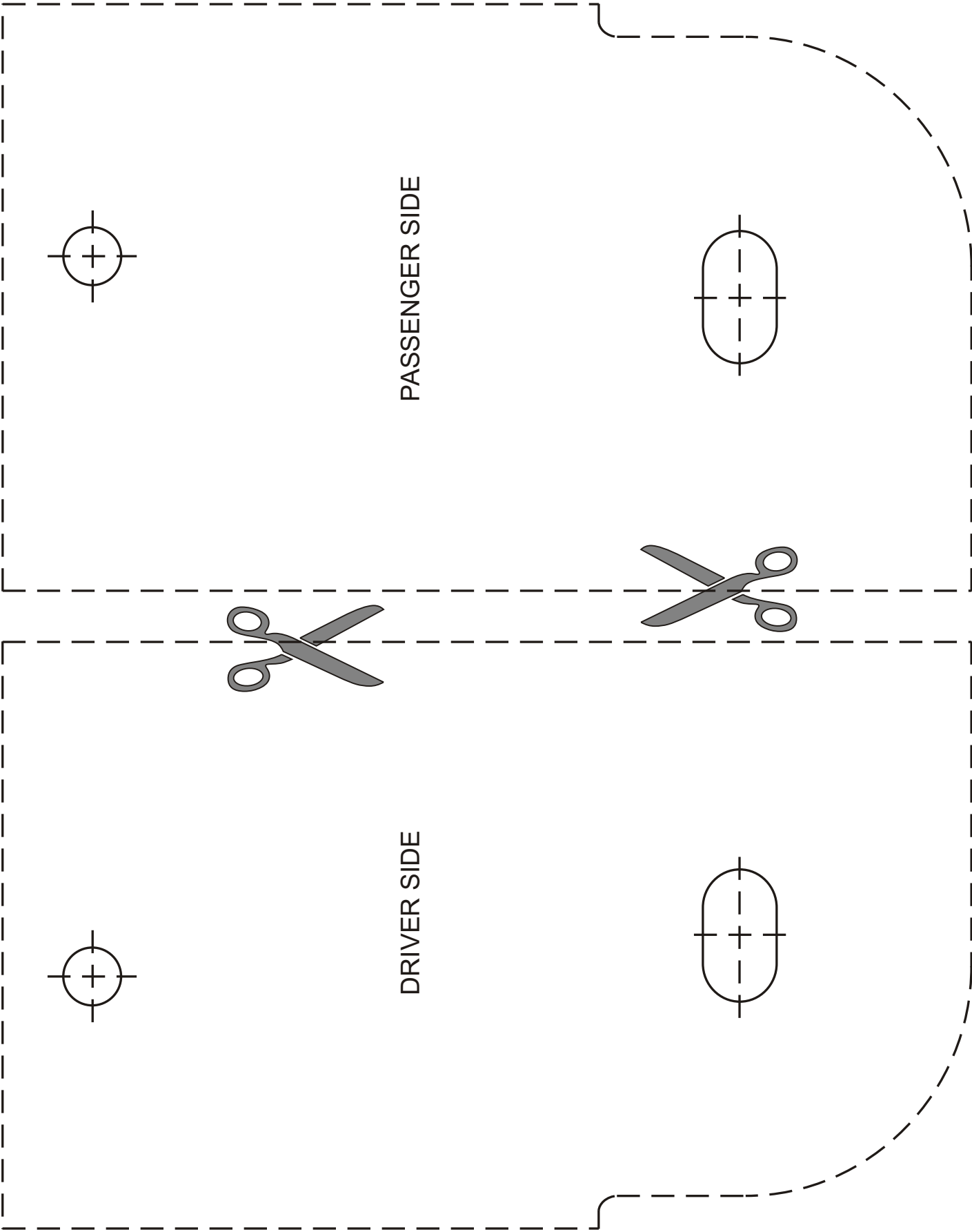
APPLICATION: 1998-08 FORD RANGER/RANGER EDGE EXT. CAB

## STEP BAR ASSEMBLIES

23-2110  
23-2115  
23-1550  
23-1555



ITEM			QTY	CONTENTS	TOOLS
1,2			2	STEP BAR, PASSENGER (1) AND DRIVER (2)	3/4" SOCKET 16MM SOCKET 16MM WRENCH *7/16" DRILL BIT *DRILL CENTER PUNCH HAMMER RATCHET TORQUE WRENCH  *NOTE: A SHORT 7/16" BIT WITH A 3/8" SHANK AND A SMALL OR RIGHT ANGLE DRILL MAY BE NECESSARY FOR EASIER INSTALLATION.
3,4			2	FRONT BRACKET, PASSENGER (3) AND DRIVER (4)	
5,6			2	REAR BRACKET, PASSENGER (5) AND DRIVER (6)	
7,8			2	MOUNT PLATE ASSEMBLY, PASSENGER (7) AND DRIVER (8)	
9,10			2	SUPPORT BRACE, PASSENGER (9) AND DRIVER (10)	
11			4	1/2-13 X 2.00" HEX HEAD BOLT	
12			4	1/2" FLAT WASHER	
13			4	1/2" LOCK WASHER	
14			10	M10-1.50 X 30MM HEX HEAD BOLT	
15			16	M10 FLAT WASHER	
16			10	M10 LOCK WASHER	
17			6	M10-1.50 HEX NUT	



PASSENGER SIDE

DRIVER SIDE

- STEP 1. Remove the contents from box and check for damage. Verify all parts are present. Read instructions completely before beginning.
- STEP 2. Attach front brackets and support braces using M10 fasteners as shown. **SEE FIGURES 1 THROUGH 3.**
- STEP 3. Temporarily attach rear bracket to vehicle through hole as shown. **SEE FIGURE 4.** Carefully cut out templates and align with visible portion of rear bracket. Tape template in place and mark center of top hole with center punch. Remove template and bracket from vehicle. Drill 7/16" diameter hole at this location.  
**NOTE:** If hole on rocker panel aligns with T-Slot on mount bracket fasten at this location. Drilling is not required.
- STEP 4. Attach rear brackets to the backside of rocker panel using M10 fasteners as shown. **SEE FIGURE 5.**
- STEP 5. Attach step bars to brackets using 1/2" fasteners as shown. **SEE FIGURE 6.**
- STEP 6. Make sure step bar and brackets are properly aligned with vehicle and tighten fasteners. Recommended torque value is 16 Ft. Lbs. for M10 fasteners and 64 Ft. Lbs. for 1/2" fasteners.
- 

#### FINISH PROTECTION

Westin products have a high quality finish that must be cared for like any other exposed finish on the vehicle. Protect the finish with a non-abrasive automotive wax, (e.g. Pure Carnauba) on a regular basis. The use of any soap, polish or wax that contains an abrasive is detrimental, as the compounds scratch the finish and open it to corrosion.

---

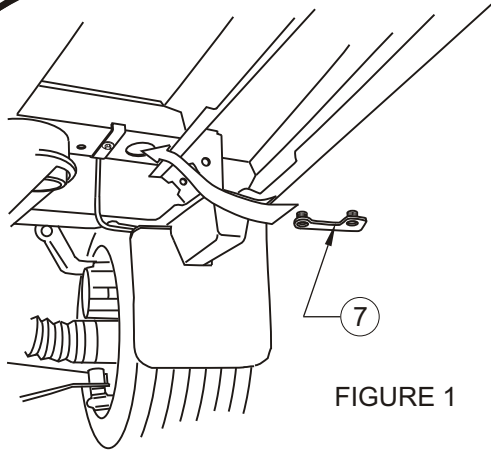


FIGURE 1

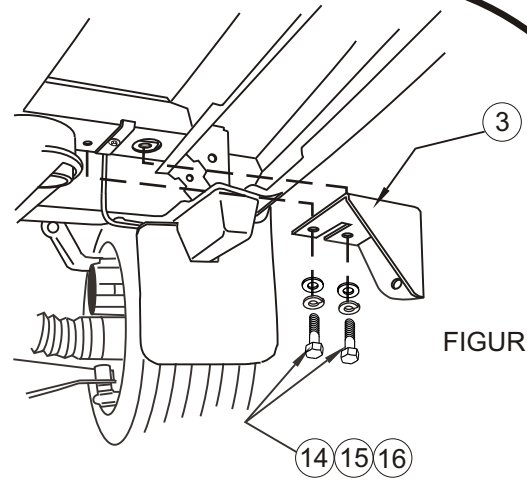


FIGURE 2

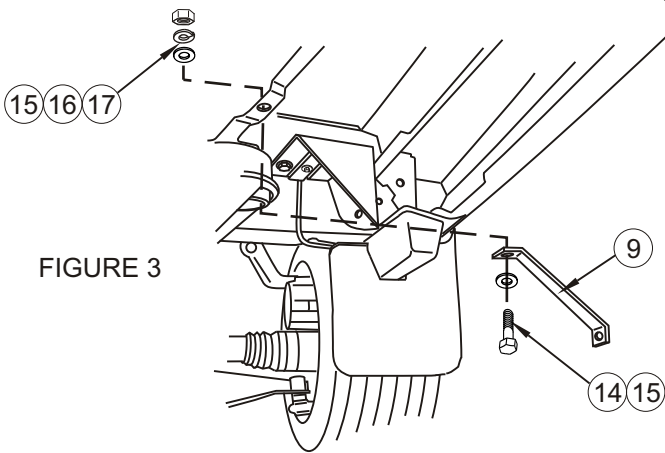


FIGURE 3

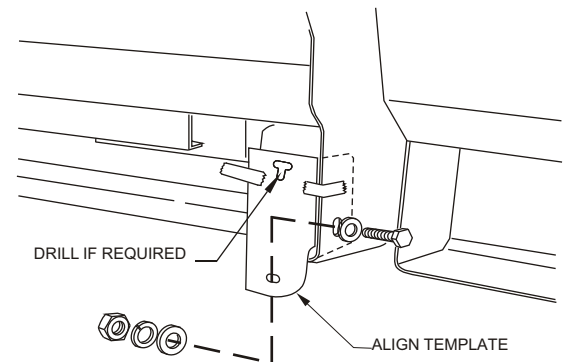


FIGURE 4

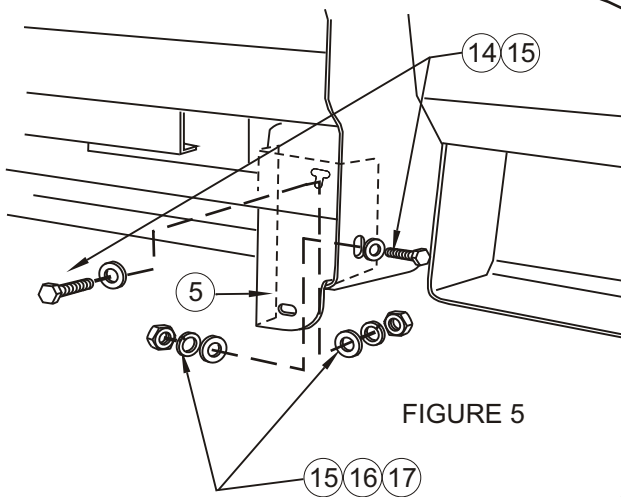


FIGURE 5

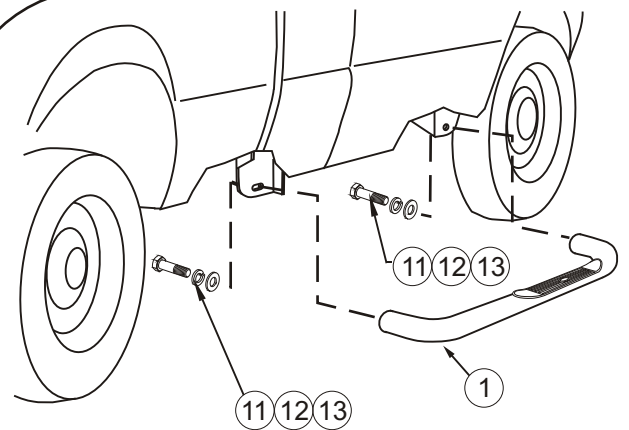


FIGURE 6

INSTALLATION VIEW OF PASSENGER SIDE SHOWN, DRIVER SIDE OPPOSITE