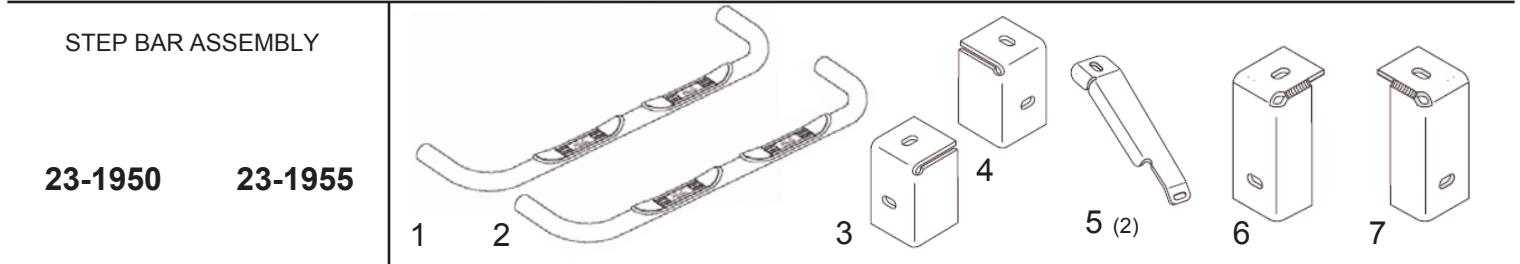




INSTRUCTIONS

APPLICATION: SILVERADO/SIERRA 01-07 2500HD/3500; 02-07 1500HD - CREW CAB

AUTOMOTIVE PRODUCTS, INC.



ITEM	QTY	CONTENTS	TOOLS
1	1	PASSENGER SIDE BAR (PINK SLEEVE)	16MM SOCKET 18MM SOCKET 19MM SOCKET 21MM SOCKET EXTENSION TORQUE WRENCH RATCHET
2	1	DRIVER SIDE BAR	
3	1	FRONT MOUNT BRACKET - DF	
4	1	FRONT MOUNT BRACKET - PF	
5	2	CENTER MOUNT BRACKETS	
6	1	REAR MOUNT BRACKET - DR	
7	1	REAR MOUNT BRACKET - PR	
8	4	3" PLASTIC RINGS	
9	6	12mm x 120mm HEX BOLT	
10	10	12mm FLAT WASHER	
11	10	12mm LOCK WASHER	
12	4	12mm x 50mm HEX BOLT	
13	2	10mm x 25mm HEX BOLT	
14	2	10mm FLAT WASHER	
15	2	10mm LOCK WASHER	

PRODUCT INSTALLATION:

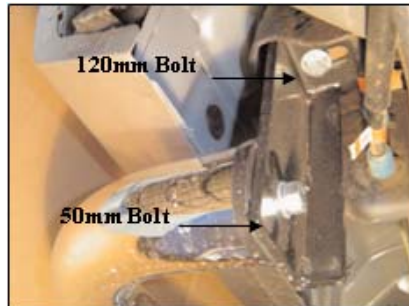
- Remove the front, center, and rear body mount bolts located along frame under the vehicle. Attach the specified brackets using the listed hardware to the body mounts as shown on (Figure #1, #2, #3)
- Attach the step bar to the front and rear brackets using the 12mm x 50mm Hex Bolts, Lock Washers and Flat Washers. Attach the Center bracket to the Side Bar using 10mm x 25mm Hex Bolts, Lock Washers and Flat washer. Make sure step bar and brackets are properly aligned then tighten all hardware.
- Repeat steps one and two on opposite side of vehicle.

PRODUCT SPECIFICATIONS:

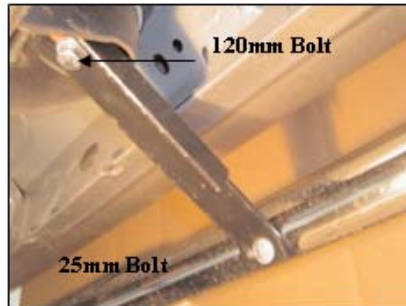
Side Bars have a 300 lb. weight capacity.

PRODUCT CARE:

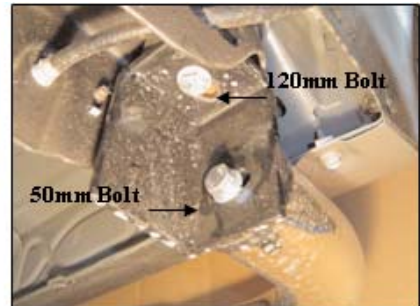
Westin products have a high quality finish that must be cared for like any other exposed finish on the vehicle. Protect the finish with a non-abrasive automotive wax, (e.g. Pure Carnauba) on a regular basis. The use of any soap, polish or wax that contains an abrasive is detrimental, as the compounds scratch the finish and open it to corrosion.



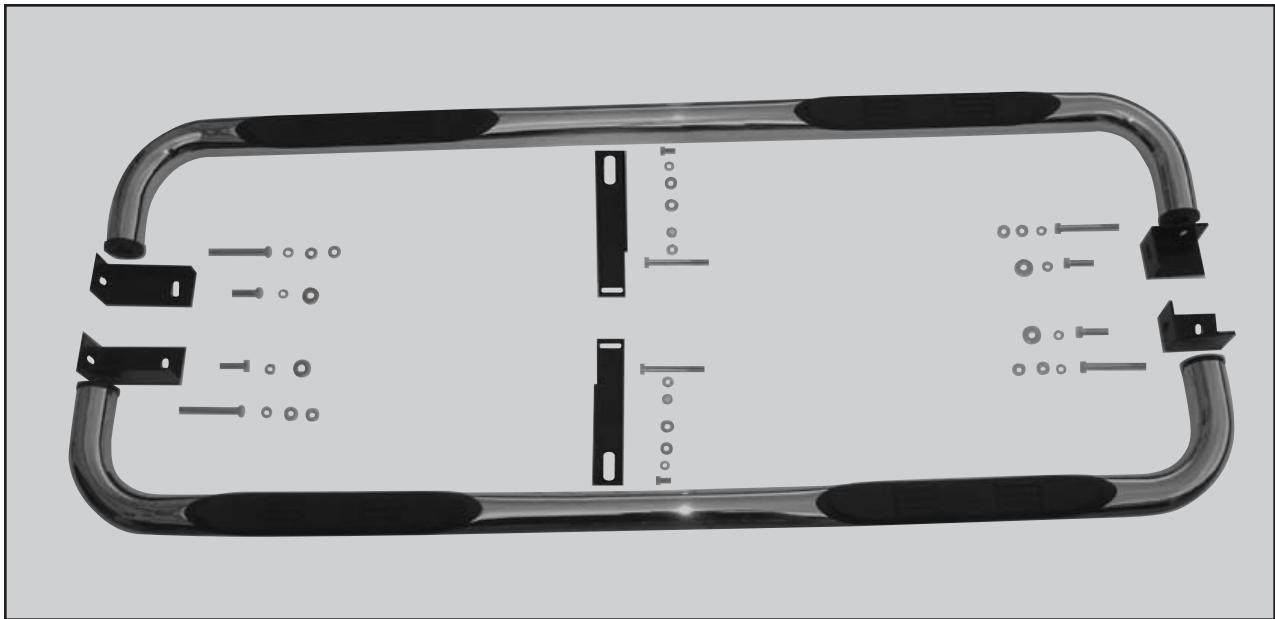
Rear Bracket (Fig. 1)



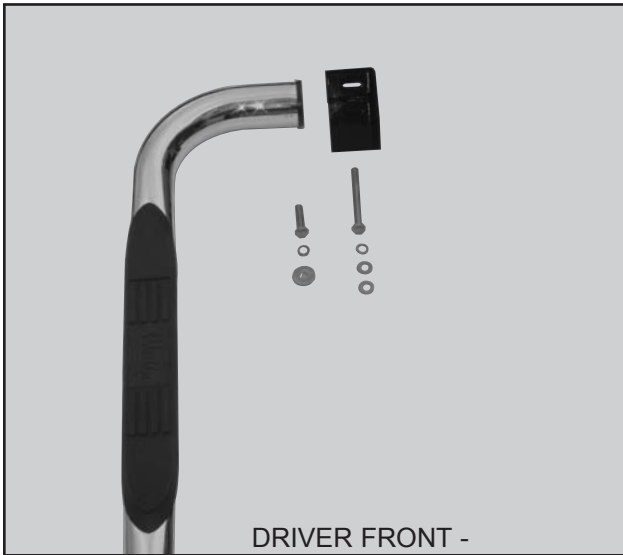
Center Bracket (Fig. 2)



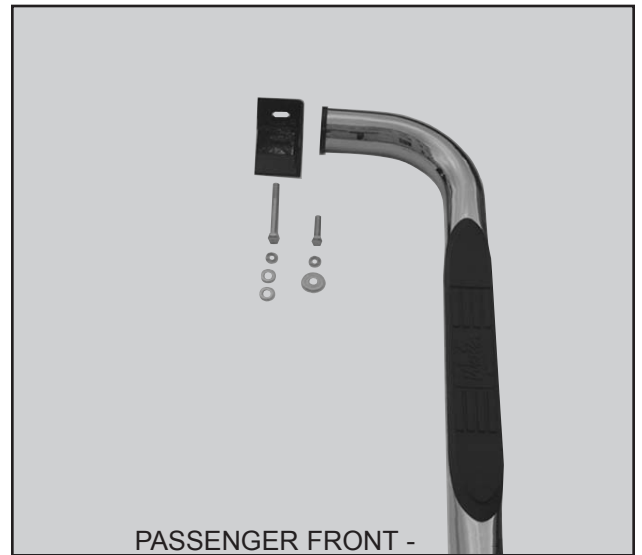
Front Bracket (Fig. 3)



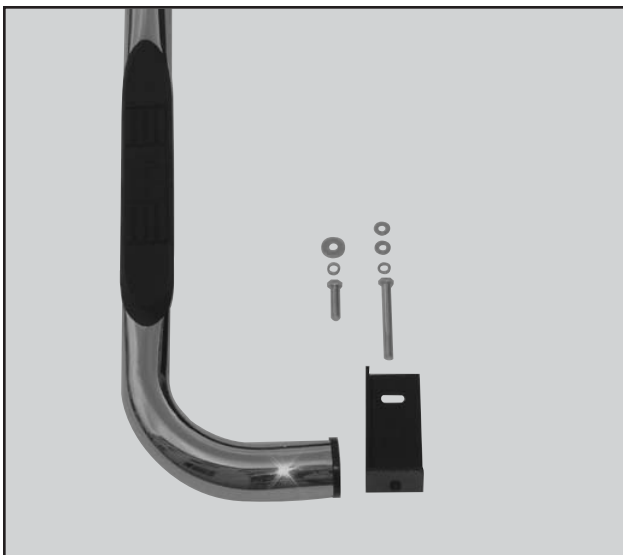
FULL ASSEMBLY -



DRIVER FRONT -



PASSENGER FRONT -



DRIVER REAR -



PASSENGER REAR -