



SIGNATURE OF QUALITY

AUTOMOTIVE PRODUCTS, INC.

INSTRUCCIONES

APPLICATION: 1997-2004 FORD F-150/250LD REGULAR CAB / 1999-2004 SUPERCAB 4-DOOR (04' HERITAGE) 1997-1998 FORD F-150/250LD SUPERCAB 3-DOOR.

STEP BAR ASSEMBLIES				2		3	4	7
23-1430	23-1435	23-1100	23-1105					
				1		5	6	8

ITEM	QTY	CONTENTS	TOOLS
1,2	2	STEP BARS, PASSENGER (1), AND DRIVER (2)	3/4" SOCKET
3,4	2	FRONT MOUNTING BRACKETS, PASSENGER (3), AND DRIVER (4).	13MM SOCKET
5,6	2	REAR MOUNTING BRACKETS, PASSENGER (5), AND DRIVER (6)	13MM WRENCH
7	4	1/2" X 2" HEX BOLTS	15MM SOCKET
8	4	1/2" LOCK WASHERS	RATCHET
9	4	1/2" FLAT WASHERS	TORQUE WRENCH
10	2	M10 OFFSET DOUBLE STUD PLATES	
11	2	M10 DOUBLE STUD PLATE	
12	8	M10 FLAT WASHERS	
13	8	M10 LOCK WASHERS	
14	8	M10 HEX NUTS	
15	8	M8 X 25MM HEX BOLTS	
16	16	M8 FLAT WASHER	
17	8	M8 LOCK WASHERS	
18	8	M8 HEX NUTS	

- STEP 1. Remove contents from box and check for damage. Verify all parts are present. Read install instructions completely before beginning.
- STEP 2. Starting at the front driver side of the vehicle remove the factory inner rocker panel plugs from the vehicle. (FIGURE 1)
- STEP 3. Insert (1) offset stud plate into the factory hole. Then attach the driver side front mounting bracket using the supplied (2) M10 flat washers, (2) M10 lock washers, and (2) M10 hex nuts. Do not fully tighten at this time. (FIGURE 2,3,4)
- STEP 4. Using the supplied (2) M8 hex bolts, (4) M8 flat washers, (2) lock washers, and (2) hex nuts line up the slots on the front bracket with the holes in the pinch weld of the rocker panel and secure the bracket. (FIGURE 4)
- STEP 5. Locate the driver side rear rocker panel plug and remove. Insert (1) double stud plate into hole. (FIGURE 5,6,7)
- STEP 6. Attach (1) rear driver side mounting bracket to previously installed double stud plate using (2) M10 flat washers, (2) M10 lock washers, and (2) M10 hex nuts. (FIGURE 7,8)
- STEP 7. Using the supplied (2) M8 hex bolts, (4) M8 flat washers, (2) M8 lock washers, and (2) M8 hex nuts; line up the bottom slots of the mounting bracket so they line up with the holes on the pinch weld then secure. (FIGURE 8)
- STEP 8. Attach the driver side step bar to the mounting brackets using (2) 1/2" hex bolts, (2) 1/2" flat washers, and (2) 1/2" lock washers.
- STEP 9. Tighten all hardware. Recommended torque value for 1/2" hardware is 65-80 ft/lbs, M8 hardware 10-20 ft/lbs, M10 30-40ft/lbs.

FINISH PROTECTION

Westin products have a high quality finish that must be cared for like any other exposed finish on the vehicle. Protect the finish with a non-abrasive automotive wax, (e.g. Pure Carnauba) on a regular basis. The use of any soap, polish or wax that contains an abrasive is detrimental, as the compounds scratch the finish and open it to corrosion.



SIGNATURE OF QUALITY

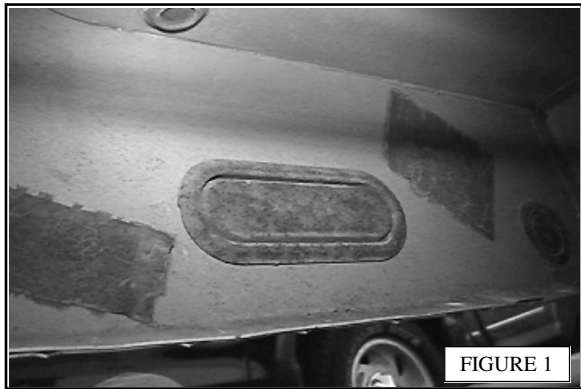


FIGURE 1

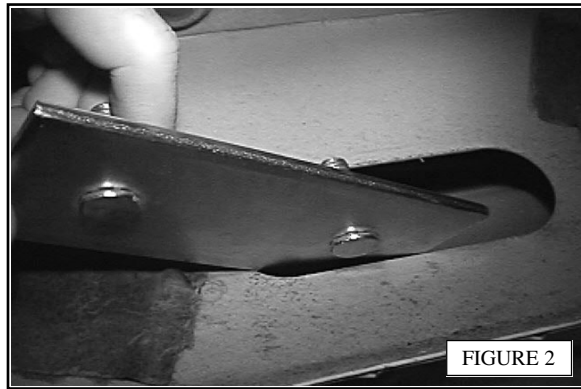


FIGURE 2



FIGURE 3

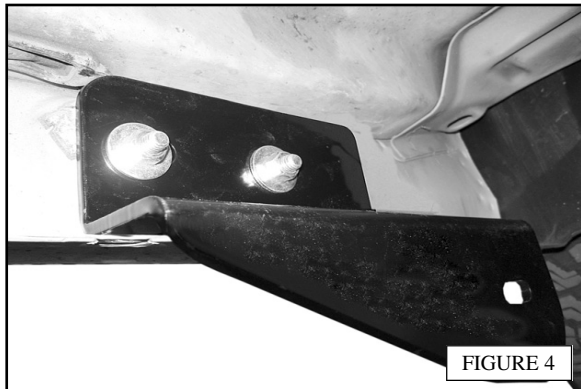


FIGURE 4

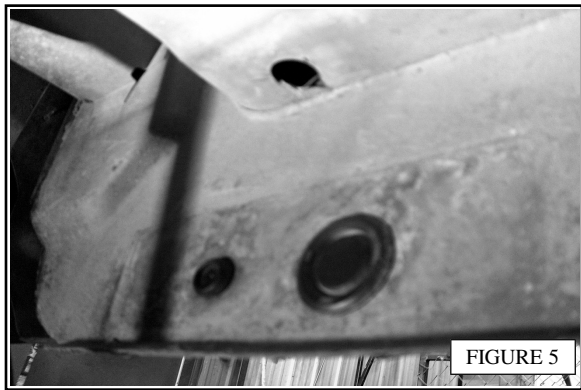


FIGURE 5



FIGURE 6

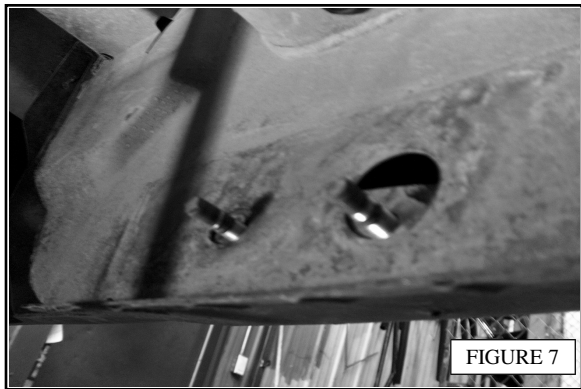


FIGURE 7

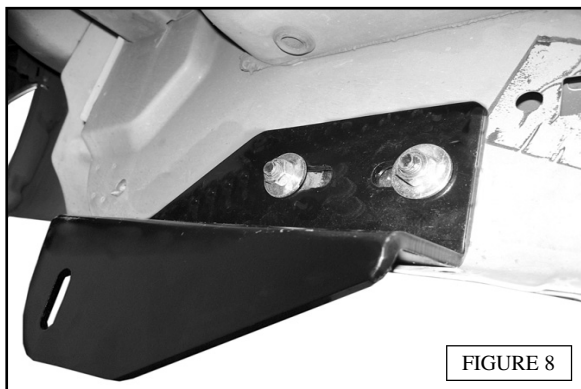


FIGURE 8

Feel the difference with Westin.

Check out the collection of side steps and nerf bars we offer.