



AUTOMOTIVE PRODUCTS, INC.

INSTRUCTIONS

APPLICATION: 97-04 FORD F150/ F250 LD SUPERCAB
 APP.PART# 23-1110, 23-1115
 3" ROUND STEP BARS

| ITEM | QUANTITY | DESCRIPTION | TOOLS NEEDED |
|------|----------|--|---------------|
| 1 | 2 | STEP BARS | 3/4 SOCKET |
| 2,3 | 2 | FRONT MOUNTING BRACKETS (2) DRIVERS SIDE, (3) PASSENGER SIDE | 16MM SOCKET |
| 4,5 | 2 | REAR MOUNTING BRACKETS (4) DRIVERS SIDE, (5) PASSENGER SIDE | RATCHET |
| 6 | 4 | 1/2" HEX HEAD BOLTS | TORQUE WRENCH |
| 7 | 4 | 1/2" FLAT WASHERS | |
| 8 | 4 | 1/2" LOCK WASHERS | |
| 9 | 1 | M10 NARROW BOLT PLATE | |
| 10 | 2 | M10 OFFSET DOUBLE BOLT PLATES | |
| 11 | 2 | M10 DOUBLE BOLT PLATES | |
| 12 | 8 | M10 FLAT WASHERS | |
| 13 | 8 | M10 LOCK WASHERS | |
| 14 | 8 | M10 HEX NUTS | |
| 15 | 2 | M10 PLATIC RETAINERS (FOR NARROW BOLT PLATES ONLY) | |
| 16 | 8 | M8 HEX HEAD BOLTS | |
| 17 | 16 | M8 FLAT WASHERS | |
| 18 | 8 | M8 LOCK WASHERS | |
| 19 | 8 | M8 HEX NUTS | |

1. Remove all contents from box, verify all parts listed are present and free from damage. Carefully read and understand all instructions before attempting installation.
2. From under the driver side front of the vehicle, remove the oval grommet located on the inside of the rocker panel, (Figure 1). Insert (1) Offset Double Bolt Plate, (with threaded studs toward the top), into the factory oval hole, (Figure 2).
3. Locate the driver side front Mounting Bracket. Hold the Double Bolt Plate from one side while you position and attach the Mounting Bracket to the opposite side. Secure the Bolt Plate with one M10 Flat Washer, M10 Lock Washer and M10 Hex Nut. Proceed to install the rest of the hardware to secure the Mounting Bracket to the Double Bolt Plate. (Figure 3). Do not tighten hardware at this time.
4. Align the Mounting Bracket with holes in the pinch weld. Attach the Mounting Bracket to the pinch weld using the included (2) M8 Hex Bolts, (4) M8 Flat Washers, (2) M8 Lock Washers and (2) M8 Hex Nuts. NOTE: Insert Bolt with Flat Washer from the outside-in. Do not tighten hardware at this time.
5. Moving to the rear, use one of the (centered) Double Bolt Plates and hardware to install the Rear Bracket. Repeat steps 2- 4 for driver side rear Mounting Bracket. Note for 1997-98 3-Door models only: The 3-door model uses the included (1) M10 Narrow Bolt Plate for driver side rear Bolt Plate installation. Thread (1) M10 Plastic Retainer partially onto (1) threaded end on the Bolt Plate, (Figure 5). Insert the other end of the Bolt Plate, (without plastic retainer), into the large round hole and back out the smaller round hole on the inside of the rocker panel. Continue to thread the Plastic Retainer down the Bolt Plate until it is flush with the sheetmetal. Thread (1) Plastic Retainer onto the remaining threaded end on the Bolt Plate, (Figure 6). IMPORTANT: The Plastic Retainer is designed to prevent the Bolt Plate from falling into the body cavity and to aid in mounting the Bracket.
6. Depending on model year, slots in rear Mounting Brackets may align with only one factory hole along pinch weld, (Figure 4 & 7). If desired, installer may drill through Pinch Weld for second Pinch Weld bolt, (included). IMPORTANT: Do not drill for

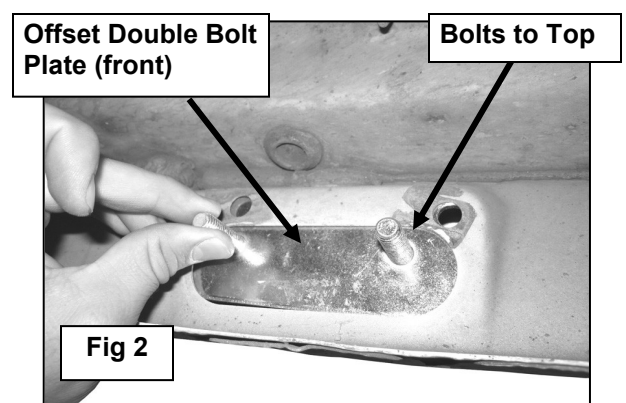
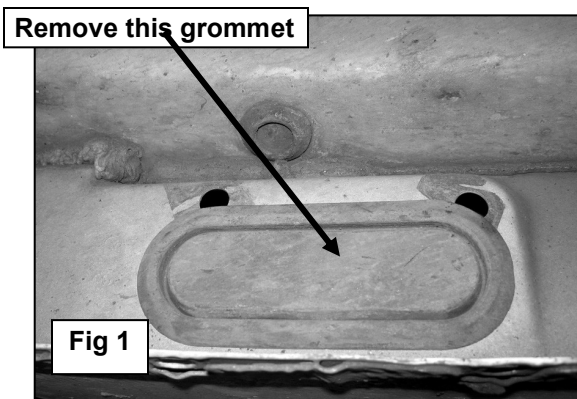
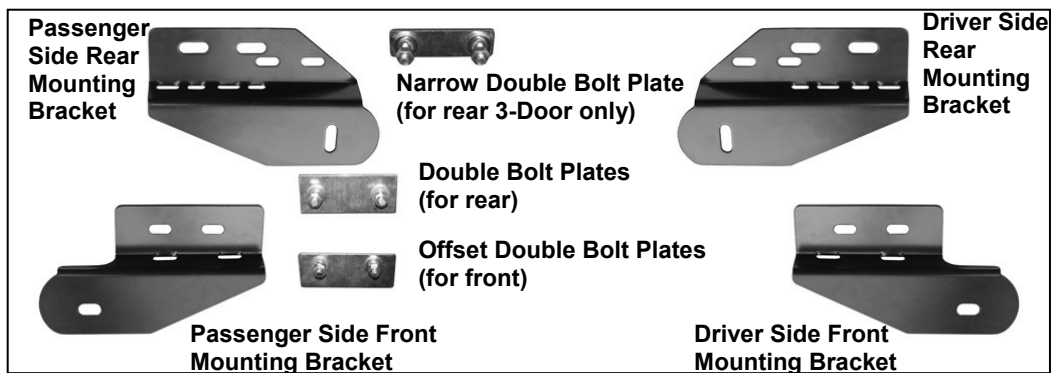


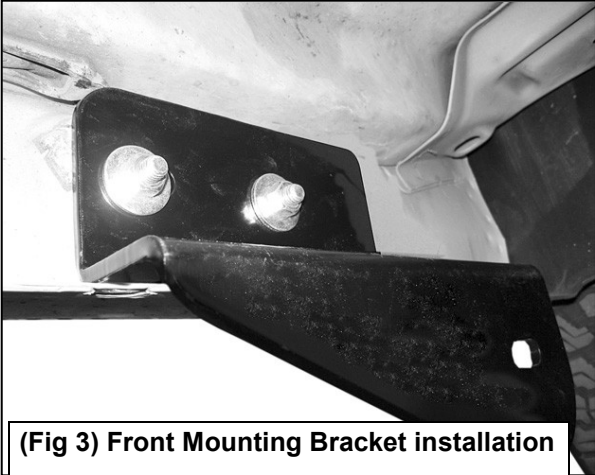
second hole until the Sidebar has been completely installed and adjusted to properly locate the Mounting Bracket on the vehicle. Do not tighten hardware at this time.

7. Once the Mounting Brackets have been partially installed, carefully unpack and separate the driver and passenger Sidebar. NOTE: Step pad typically goes toward front of vehicle to match footwell. Position Sidebar onto Mounting Brackets using the included (2) 1/2" x 2" Hex Head Bolts, (2) 1/2" Lock Washers, and (2) 1/2" Flat Washers, (Figure 4 & 7). Do not tighten hardware.
8. Level and adjust the Sidebar, drill for second Pinch Weld Bolt if necessary, then tighten all hardware at this time. Torque all 1/2" hardware to 50-55 ft lbs, and M10 hardware to 35-40 ft lbs
9. Repeat steps 2 – 8 for passenger Sidebar installation

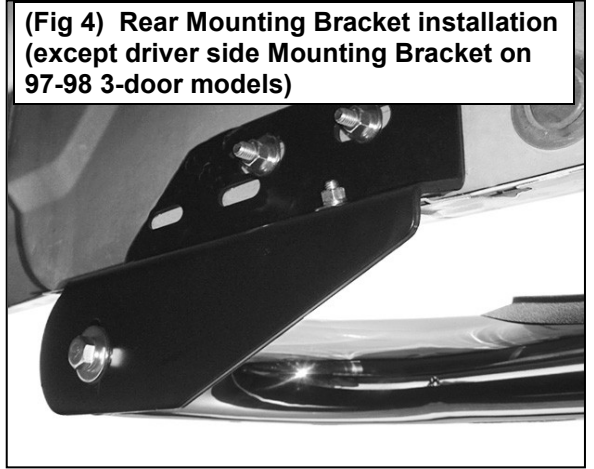
CARE INSTRUCTIONS

- REGULAR WAXING IS RECOMMENDED. DO NOT USE ANY TYPE OF POLISH OR WAX THAT MAY CONTAIN ABRASIVES
- STAINLESS STEEL PRODUCTS CAN BE CLEANED WITH MILD SOAP AND WATER. STAINLESS STEEL POLISH SHOULD BE USED TO POLISH SMALL SCRATCHES.
- GLOSS BLACK FINISHES SHOULD BE CLEANED WITH MILD SOAP AND WATER





(Fig 3) Front Mounting Bracket installation



(Fig 4) Rear Mounting Bracket installation (except driver side Mounting Bracket on 97-98 3-door models)

Narrow Double Bolt Plate (driver side 3-Door model only) Pictured with Plastic Retainer

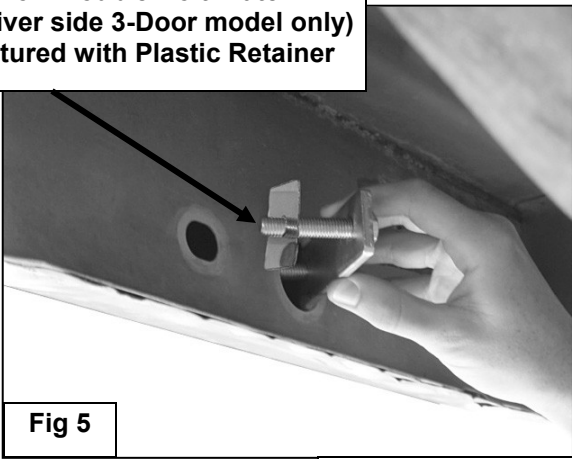
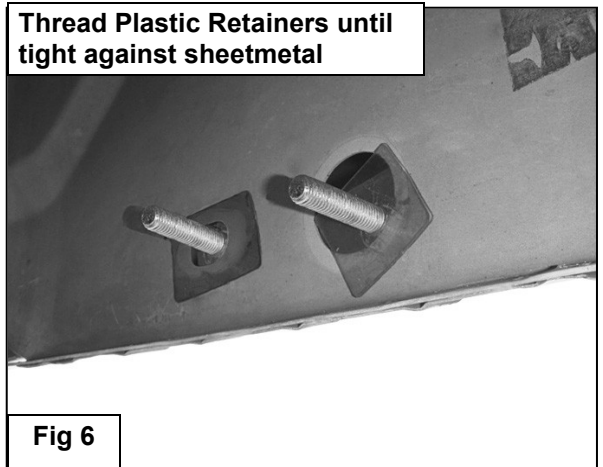


Fig 5



Thread Plastic Retainers until tight against sheetmetal

Fig 6

**Narrow Double Bolt Plate uses (2) lower slots on Mounting Bracket (driver side 3-Door model only)
1/2" x 2" Hex Bolt
1/2" Lock Washer
1/2" Flat Washer**

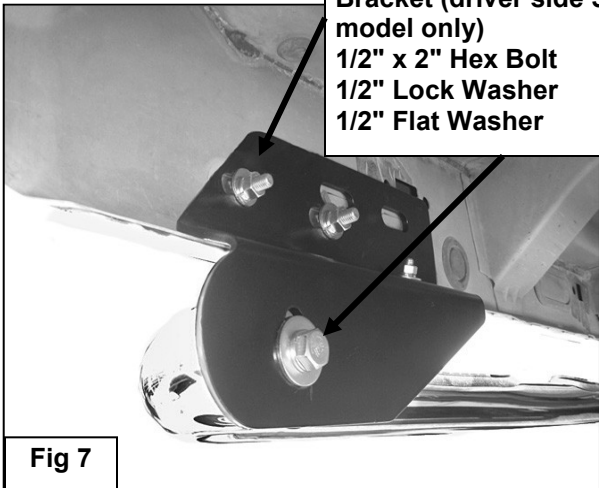


Fig 7



Driver Side Pictured. Note step pad location

