



INSTALLATION INSTRUCTIONS

PRO TRAXX[®] 5 WHEEL-TO- WHEEL

AUTOMOTIVE PRODUCTS, INC.

**APPLICATION: 2009-2015 DODGE RAM 1500 CREW CAB W/ 5.5' BED
2009-2015 DODGE RAM 1500 QUAD CAB W/ 6.5' BED**

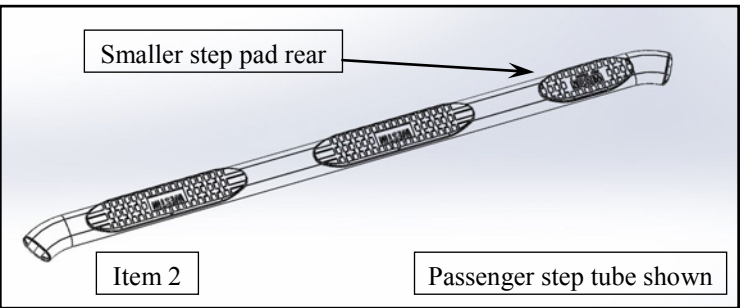
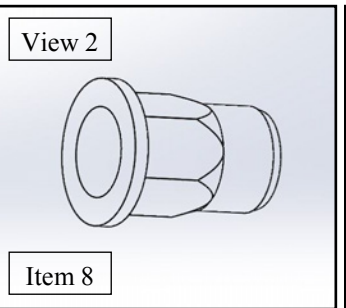
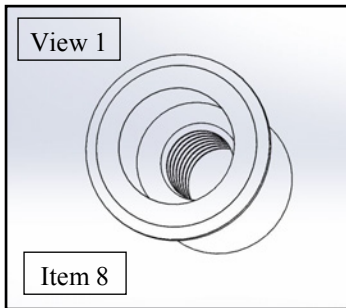
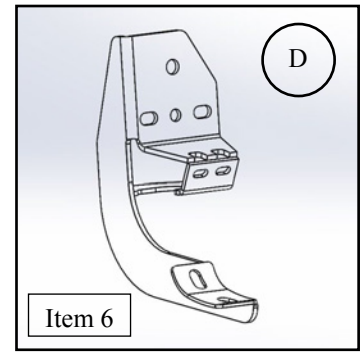
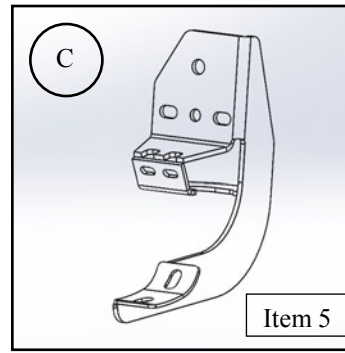
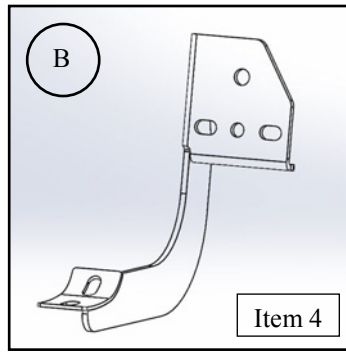
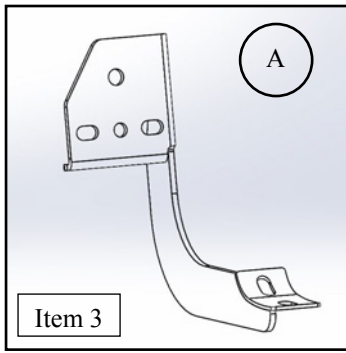
APPLICATION PART # 21-534310 & 21-534315

ITEM	QUANTITY	DESCRIPTION	TOOLS NEEDED
1	1	Driver Step Bar	3/8 Ratchet
2	1	Passenger Step Bar	17mm Socket
3	2	Mounting Bracket A	18mm Socket
4	2	Mounting Bracket B	Allen key
5	1	Mounting Bracket C	3/8 Ratchet Extension
6	1	Mounting Bracket D	
7	6	M12 Stud Plate with M10 Nut	Torque Wrench
8	6	M10 Riv-cert	
9	12	M10 x 30mm Hex Head Cap Screw	
10	12	M10 Split Lock Washer	
11	12	M10 Flat Washer	
12	6	M12 Hex Nut	
13	6	M12 Split Lock Washer	
14	6	M12 Flat Washer	
15	4	M6 x 25mm Button Head Socket Cap Screw	
16	4	M6 Flat Washer Big	
17	4	M6 Flat Washer Small	
18	4	M6 Split Lock Washer	
19	4	M6 Hex Nut	
20	16	M10 x 25mm Hex Button Head Cap Screw	
21	12	M10 x 20mm Flat Washer	
22	12	M10 Internal Toothed Lock Washer	
23	6	Plastic Poly Retainer Squares	

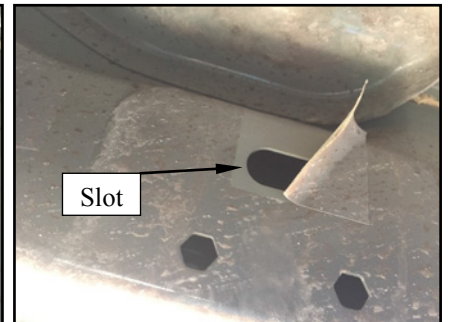
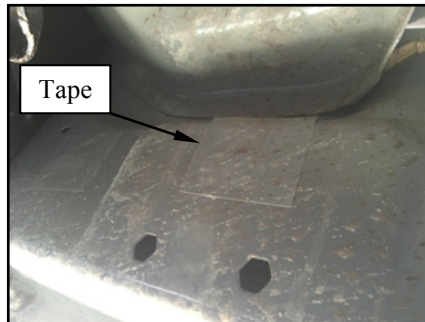
ANTI-SEIZE LUBRICANT MUST BE USED ON ALL STAINLESS STEEL FASTENERS TO PREVENT THREAD DAMAGE AND GALLING.

Procedures

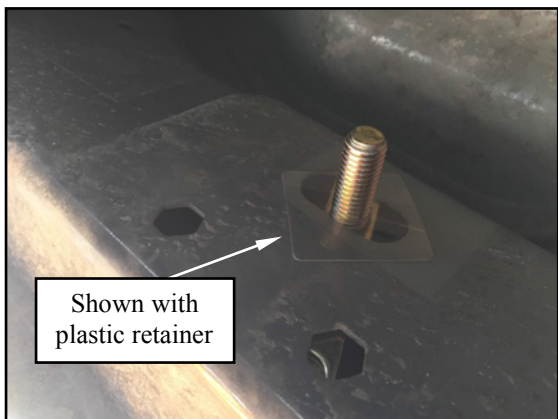
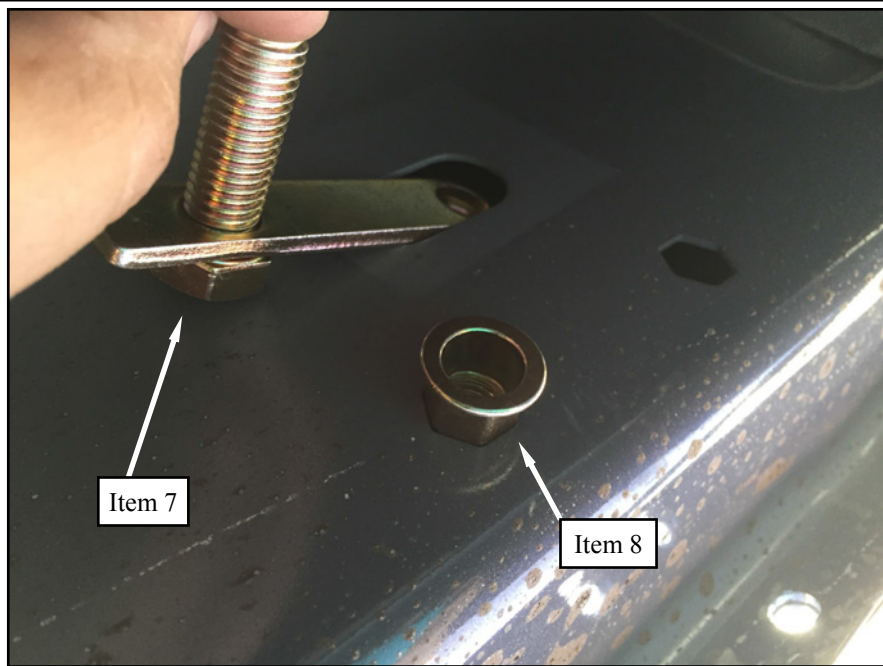
- Remove all contents from the box, verify if all the parts listed are present and free from damage.
- Carefully read and understand all instructions before attempting installation.
- **Failure to identify damage prior to installation could lead to rejection of any claim.**



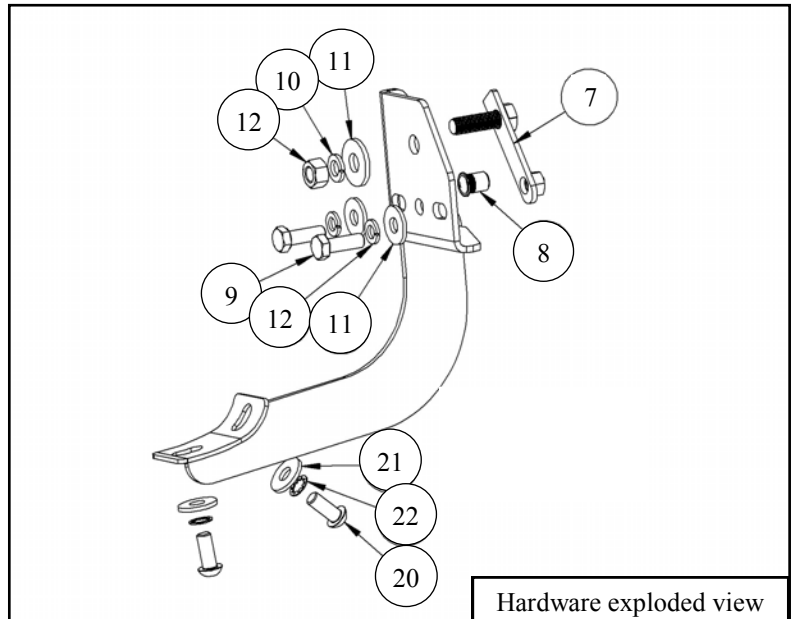
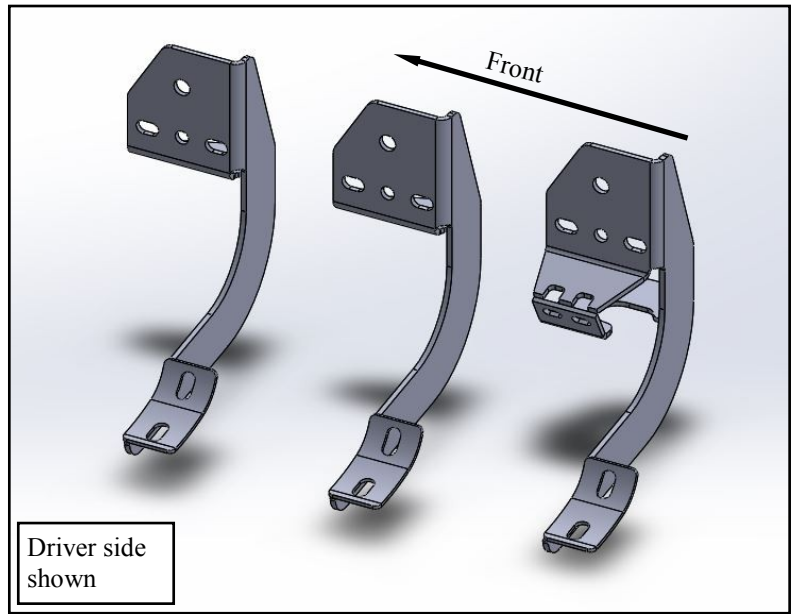
- Starting from either Passenger or Drivers side Rocker Panel, remove the tape that covers the slot, that is located above the 2 hexagon holes. (A total of 3 taped slots per side should be removed).



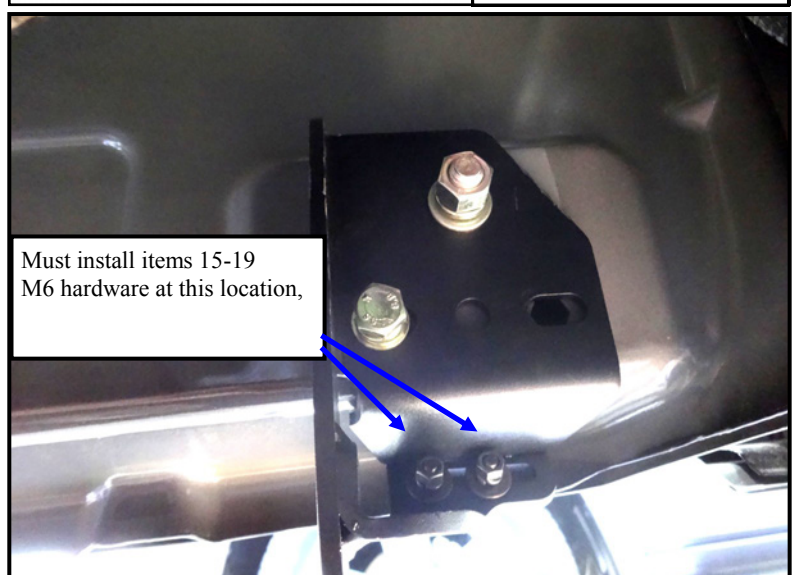
- Place Stud/nut plate onto the slotted hole (Item 7) as well as the hex riv-cert (Item 8) onto the hexagon hole. (Before inserting stud/nut plate onto the slot place a square plastic retainer (Item 23) on the stud portion of the plate to prevent the plate from falling in the slot, as shown in picture below).



3. Bracket will be placed in the order for drivers side, shown on the picture to the right.
4. In order to properly mount the riv-cert (Item 8) to the rocker panel, place the bracket as shown in the picture below tighten stud first then place washer with M10 bolt in the riv-cert and tighten. The riv-cert will expand and lock the riv-cert inside the rocker panel.
5. Remove the M10 bolt and leave the top hardware in place loosely so that the stud can be moved.
6. Slide bracket slot to the riv-cert and mount using (1) M10 Bolt, lock washer and flat washer. (Items 9,10,11)
7. Remove the nut from the stud on the top of the bracket and turn the stud until the nut on the bottom aligns with the hexagon hole and the slot on the bracket. Using the same hardware as mentioned in step 6 secure the bracket to the rocker panel.
8. Using an M10 Nut along with M10 lock washer and M10 Flat washer on the M10 stud to secure bracket to rocker panel. Install the bracket loosely.



9. Before installing center bracket, the rear bracket may not have enough room for the riv-cert lock in procedure, the center bracket may want to be used for this procedure on the rear bracket.
10. The rear bracket mounts up the same as the front and center bracket, but the rear bracket also connects with the pinch weld, in order to secure bracket to pinch weld use (1) M6 bolt, (1) M6 flat washer large, (1) M6 flat washer small, (1) M6 lock washer, and (1) M6 nut per slot.



9. Install the running board, respectively to each side (short pad towards the rear), and secure to the brackets using (2) M10 Button Head bolts (item 20), (2) toothed lock washers (item 22) and (2) flat washers per bracket (item 21).
10. There will be two extra M10 Button head bolts that will need to go on the two riv-cert locations on the step bars. Those two threaded holes will not have a mounting bracket installed.
11. Adjust and tighten all M10 hardware to 30 lb.ft, M6 to 8 lb ft.



CARE INSTRUCTIONS

- REGULAR WAXING IS RECOMMENDED. DO NOT USE ANY TYPE OF POLISH OR WAX THAT MAY CONTAIN ABRASIVES.
- STAINLESS STEEL PRODUCTS CAN BE CLEANED WITH MILD SOAP AND WATER. STAINLESS STEEL POLISH SHOULD BE USED TO POLISH SMALL SCRATCHES.
- GLOSS BLACK FINISHES SHOULD BE CLEANED WITH MILD SOAP AND WATER.