



INSTRUCTIONS
4" OVAL PLATINUM STEP BARS
2002-2008 DODGE RAM REGULAR CAB
P/N: 21-2320 /21-2325

ITEM	QUANTITY	CONTENTS	TOOLS
1,2	1	SIDE BAR (DRIVER & PASSENGER SIDE)	3/4" SOCKET
3	2	FRONT MOUNTING BRACKETS	3/4" WRENCH
4	2	REAR MOUNTING BRACKETS	9/16" SOCKET
5	2	FRONT SUPPORT STRAP (02-05 MODELS)	9/16" WRENCH
6	2	FRONT SUPPORT STRAP (2006-2008 MODELS)	18MM SOCKET
7	2	REAR SUPPORT STRAP	19MM SOCKET
8	4	BOLT PLATES	RATCHET
9	4	BODY MOUNT SPACERS	
11	4	M12 X 120MM HEX HEAD BOLT	
12	4	1/2" X 2" HEX HEAD BOLT	
13	2	1/2" X 1-1/2" HEX HEAD BOLT	
14	12	1/2" FLAT WASHER	
15	10	1/2" LOCK WASHER	
16	2	1/2" HEX NUT	
17	4	3/8" X 1-1/2" HEX HEAD BOLTS	
18	12	3/8" FLAT WASHER	
19	8	3/8" LOCK WASHER	
20	8	3/8" HEX NUT	

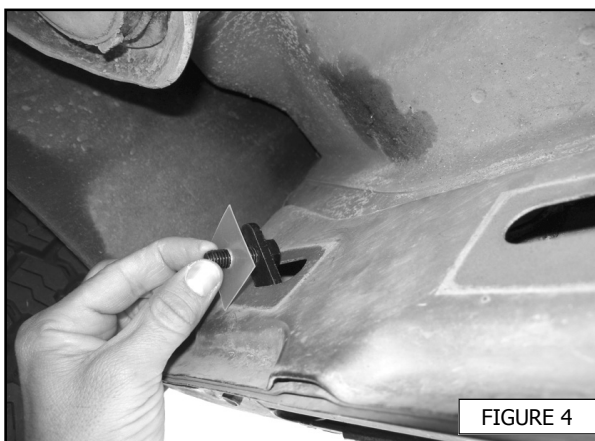
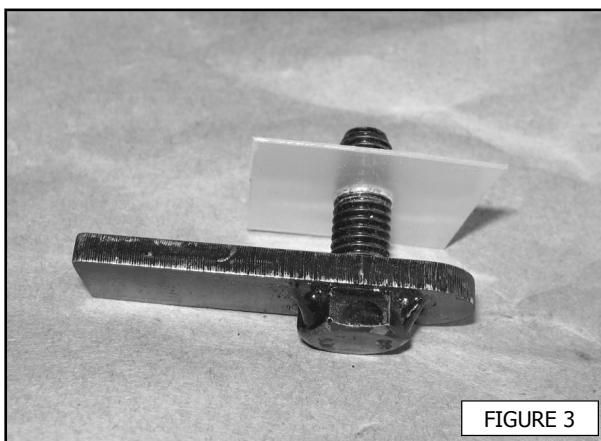
1. Verify all hardware contents listed above are present. Carefully read all instructions before installing.
2. Remove the body mount bolts from the driver side front cab mount. (FIGURE 1)
3. Place one front mounting bracket on the underside of the mount, place mount spacer above mounting bracket on crew cab models.
4. Use the supplied M12 bolt, lock washer, and flat washer to secure the bracket; hand tighten at this time. (FIGURE 2)
5. Repeat steps 2-4 for the rear mount.
6. Using the supplied bolt plate, 3/8" lock washer, 3/8" flat washer, and 3/8" hex nut; attach the front support strap to the factory slots located under the rocker panel facing the frame. (FIGURE 3,4)
7. With the supplied 3/8" hex bolt, lock washers, flat washers, and hex nuts; attach the other end of the support strap to the mounting bracket. Hand tighten at this time. (FIGURE 5)
8. Repeat steps 6-8 for the rear support strap.
9. Attach the driver side step bar to the mounting brackets using the supplied 1/2" hex bolts, lock washers, and flat washers. Hand tighten at this time.
10. Align the step bar in the position desired and tighten all hardware. (FIGURE 6)
11. Repeat all steps for passenger side.
(It is recommended to occasionally re-check and tighten all hardware.)

CARE INSTRUCTIONS

- REGULAR WAXING IS RECOMMENDED. DO NOT USE ANY TYPE OF POLISH OR WAX THAT MAY CONTAIN ABRASIVES
- STAINLESS STEEL PRODUCTS CAN BE CLEANED WITH MILD SOAP AND WATER. STAINLESS STEEL POLISH SHOULD BE USED TO POLISH SMALL SCRATCHES.
- GLOSS BLACK FINISHES SHOULD BE CLEANED WITH MILD SOAP AND WATER



INSTRUCTIONS
4" OVAL PLATINUM STEP BARS
2002-2008 DODGE RAM REGULAR CAB
P/N: 21-2320 /21-2325



When it comes to quality side steps and nerf bars, Westin is the brand you can depend on.