



AUTOMOTIVE PRODUCTS, INC.

# INSTALLATION INSTRUCTIONS

APPLICATION: 2011-14 FORD EXPLORER  
 APP PART # 28-21170/21175  
 STYLIZED RUNNING BOARD

ITEM	QUANTITY	DESCRIPTION	TOOLS NEEDED
1	2	RUNNING BOARDS	18MM SOCKET
2,3	2	FRONT MOUNTING BRACKETS TOP (2) DRIVERS SIDE, (3) PASSENGER SIDE	13MM SOCKET
4,5	2	FRONT MOUNTING BRACKETS BOTTOM (4) DRIVERS SIDE, (5) PASSENGER SIDE	13MM WRENCH
6,7	2	REAR MOUNTING BRACKETS (6) DRIVERS SIDE, (7) PASSENGER SIDE	RATCHET
8	4	M12 BOLT PLATES	TORQUE WRENCH
9	4	M12 FLAT WASHERS	ALLEN WRENCH
10	4	M12 LOCK WASHERS	
11	4	M12 HEX NUTS	
12	4	J BOLTS	
13	4	M10 FLAT WASHERS	
14	4	M10 LOCK WASHER	
15	4	M10 HEX NUT	
16	4	M8 HEX HEAD BOLT	
17	8	M8 FLAT WASHERS	
18	4	M8 LOCK WASHERS	
19	4	M8 HEX NUTS	
20	8	M8 SQUARE HEAD BOLTS	
21	8	M8 FLAT WASHERS	
22	8	M8 NYLOCK NUTS	
23	4	PLASTIC RETAINERS	

1. Remove all contents from box, verify all parts listed are present and free from damage. Carefully read and understand all instructions before attempting installation.
2. Unsecure the driver side rocker panel trim by releasing the plastic retainers along the bottom using a pair of small screwdrivers. With the doors open remove the two forward most retainers by sliding them down and off of the plastic rocker panel trim. (Fig 1,2).
3. Insert (2) J-Bolts into the two slots no longer covered by the plastic retainers. Slight trimming of the plastic is recommended to add clearance for nuts and washers. (Fig 3)
4. Insert (1) bolt plate into the front driver side slot under the vehicle ( Fig 4). Use a clear plastic retainer to prevent losing the bolt plate in the body while installing the bracket. NOTE: Some models have additional sheet metal within the uni-body on the driver side front slot. Installation of bolt plate requires inserting the bolt plate threaded end first and pulling the bolt into an appropriate position with a magnet prior to installing the plastic retainer.
5. Take the top drivers side bracket and attach it to the bottom using (1) M8 hex head bolt, (2) M8 flat washers, (1) M8 lock washer, and (1) M8 hex nut (Fig 5and 6).

6. Lift the rocker panel trim away from the body and install the driver side front bracket over the two j-bolts and bolt plate. Secure using (1) M12 flat washer, (1) M12 split lock washer, (1) M12 hex nut, (2) M10 flat washers, (2) M10 split lock washers and (2) M10 hex nuts. The running board mount surface faces the rear of the vehicle (Fig 7). Do not tighten fully at this time.
7. Insert (1) bolt plate into the rear driver side slot under the vehicle using a plastic retainer. Use the rear bracket to line up where the pinch weld must be drilled such that the bracket will be square and level. The step bar cradle faces the front of the vehicle. Center punch and drill a 3/8"-7/16" hole. ( Fig 8 and 9)
8. Install driver side rear bracket and secure using (1) M12 flat washer, (1) M12 split lock washer, (1) M12 hex nut, (1) M8 hex head bolt, (2) M8 flat washers, (1) M8 split lock washer and (1) M8 hex nut (Fig 10). Do not tighten fully at this time.
9. Take the drivers side running board and place (4) M8 square head bolts in the grooves underneath the board, then align with the mounting brackets and attach using (4) M8 flat washers, and (4) M8 nylock nuts. Do not fully tighten at this time
10. Repeat steps 2-8 for passenger side
11. Align and adjust the step bars as needed then fully tighten all hardware at this time. Torque all M12 hardware to 50-55 ft lbs, M8 to 30-35, and 3/8" to 35 ft lbs

#### CARE INSTRUCTIONS

- REGULAR WAXING IS RECOMMENDED. DO NOT USE ANY TYPE OF POLISH OR WAX THAT MAY CONTAIN ABRASIVES
- STAINLESS STEEL PRODUCTS CAN BE CLEANED WITH MILD SOAP AND WATER. STAINLESS STEEL POLISH SHOULD BE USED TO POLISH SMALL SCRATCHES.
- GLOSS BLACK FINISHES SHOULD BE CLEANED WITH MILD SOAP AND WATER



Fig 1

Retainer locations



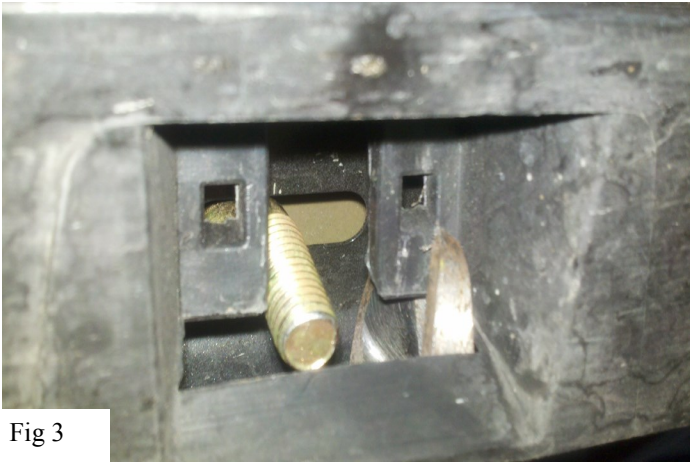


Fig 3

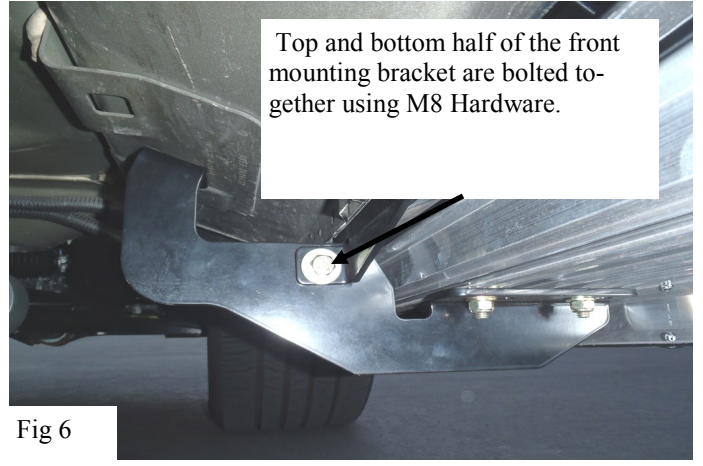


Fig 6



Fig 4

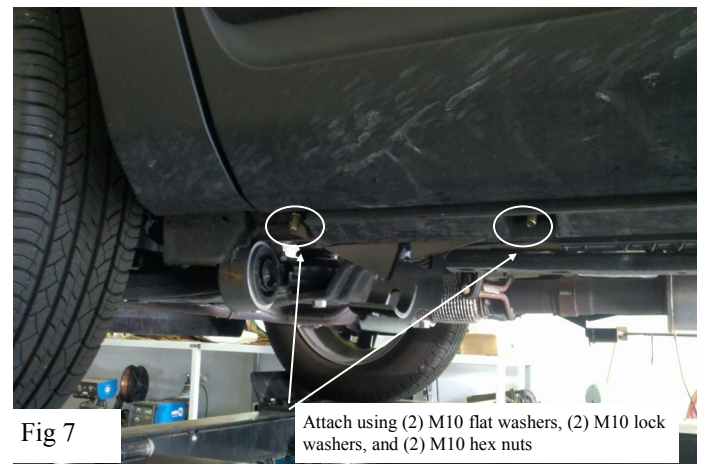


Fig 7

Passenger side bracket shown for orientation of the top and bottom half of the bracket. These are bolted together using M8 Hardware.

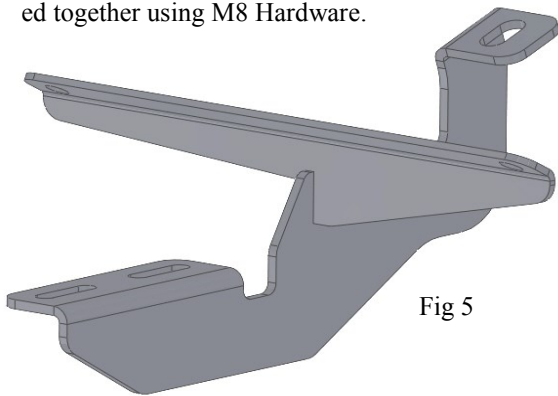


Fig 5



Fig 8



Fig 9

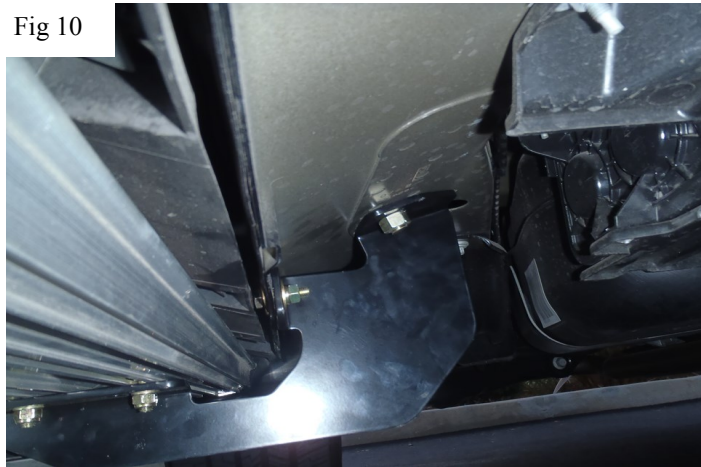


Fig 10



Installation complete