



INSTALLATION INSTRUCTIONS

APPLICATION: 2007-08 BUICK ENCLAVE/GMC ACADIA/SATURN OUTLOOK

AUTOMOTIVE PRODUCTS, INC.

MOUNT KIT 27-1835 STEP BOARD ESTRIBOS MARCHEPIED 27-6120 27-6125 27-6520					
ITEM	QTY	CONTENTS	TOOLS		
1,2	2	STEP BOARD, PASSENGER (1) AND DRIVER (2) (SOLD SEPARATELY)	3/4" SOCKET 9/16" SOCKET 1/2" SOCKET RATCHET RATCHET EXTENSION TORQUE WRENCH		
3,4	2	FRONT BRACKET, PASSENGER (3) AND DRIVER (4)			
5,6	2	REAR BRACKET, PASSENGER (5) AND DRIVER (6)			
7	4	1/2-13 X 2.00" BOLT PLATE ASSEMBLY			
8	2	1/2-13 X 1.50" BOLT PLATE ASSEMBLY			
9	2	3/8-16 BRIDGE WELD NUT			
10	6	1/2" FLAT WASHER			
11	6	1/2" LOCK WASHER			
12	6	1/2-13 HEX NUT			
13	2	3/8-16 X 1.25" HEX HEAD BOLT			
14	2	3/8" FLAT WASHER			
15	2	3/8" LOCK WASHER			
16	2	3/8-16 HEX NUT			
17	8	5/16-18 X .75" SQUARE HEAD BOLT			
18	8	5/16" FLAT WASHER			
19	8	5/16-18 LOCK NUT			
20	2	PLASTIC WASHER			

STEP 1. Remove contents from box and check for damage. Verify all parts are present. Read and understand instructions before beginning. **NOTE:** Westin does not recommend using closure strip for this application.

STEP 2. Determine passenger and driver brackets.

STEP 3. Attach front driver side bracket using two 1/2-13 x 2.00" bolt plates, 1/2" flat washers, 1/2" lock washers, and 1/2-13 hex nuts as shown. **SEE FIGURE 1.**

STEP 4. Thread 3/8-16 x 1.25" hex head bolt through bridge weld nut, insert into hole, and use plastic washer to hold in place. **SEE FIGURE 2.**

STEP 5. Insert 1/2-13 x 1.50" bolt plate into hole. **SEE FIGURE 2.**

STEP 6. Attach rear driver side bracket to the previously inserted bolt plates. **SEE FIGURE 2.**

STEP 7. Insert square head bolts as shown (2 per slot, 4 per Step board/Running board). **SEE FIGURE 4.**

STEP 8. For Aluminum Running boards. Set lights (if purchased) in appropriate location. Attach to running board as shown. Run wires as shown. **SEE FIGURE 5.**

STEP 9. Attach Step board to brackets as shown. **SEE FIGURE 6.** Make sure step board and brackets are properly aligned and tighten fasteners. Recommended torque values are 64 Ft. Lbs. for 1/2" fasteners, 26 Ft. Lbs. for 3/8" fasteners, and 10 Ft. Lbs. for 5/16" square head fasteners. Repeat installation for passenger side. Make sure that the front passenger bracket does not interfere with the metal fuel line. **SEE FIGURE 3.**

WARNING: INSTALLING LIGHT HARNESS REQUIRES SPLICING INTO VEHICLES ELECTRICAL SYSTEM. WESTIN RECOMMENDS USING A PROFESSIONAL FOR THIS INSTALLATION. NOTE: AVOID AREAS OF EXCESSIVE HEAT, VIBRATION, PINCH OR ROTATION WHEN SECURING HARNESS TO VEHICLE. CAUTION: ALWAYS USE A FUSED(+) POSITIVE SUPPLY SOURCE. UNDERCOAT SEAL FOR HARSH WEATHER.

For Aluminum Running board, run wire loom down center as shown. **SEE FIGURES 4 AND 5.**

STEP 10. Determine whether your vehicle has a positive or negative switching courtesy system or an auxiliary light source (most Fords). Obtain an accurate wiring diagram for your vehicle's courtesy light system.

For Positive and negative switching:

Locate a pass-through point (usually under carpet at driver side door sill) for the wire harness. Locate main courtesy wire (usually wire lead to dome light). **NOTE:** If you do not use the main courtesy wire, lights will only function when one door is open. Route wire harness so that the 2 female connections (from step board) are nearest to pass thru point.*Connect opposite Step board lead to either connection. Connect the splicing lead to remaining female socket and route one wire thru pass thru point. **SEE FIGURE 7.**

VERY IMPORTANT - Double check that your system has positive or negative switching.

For positive switching only: Connect positive wire to main courtesy system, (usually wire lead to dome light). **TEST CONTINUITY BEFORE CONNECTING BY OPENING AND CLOSING ALL DOORS.** Ground remaining wire.

For negative switching only: Connect negative wire to main courtesy system, (usually wire lead to dome light but sometimes from dome light to courtesy ECU). **TEST GROUND CONTINUITY BEFORE CONNECTING BY OPENING AND CLOSING ALL DOORS.** Connect remaining wire to battery using a 5A fuse.

**Be sure that you have not routed any wires near moving parts (i.e.. driveshaft) or near any heat generating source (i.e.. transmission, engine, exhaust).

Auxiliary Light source:

Locate auxiliary light source connection under vehicle (usually attached to back side of front or rear fender well (refer to vehicles owners manual) (**SEE FIGURE 7**)). **TEST SOURCE BEFORE CONNECTING.** Connect splicing leads to aux light source. test step board lights for proper function by opening and closing doors.

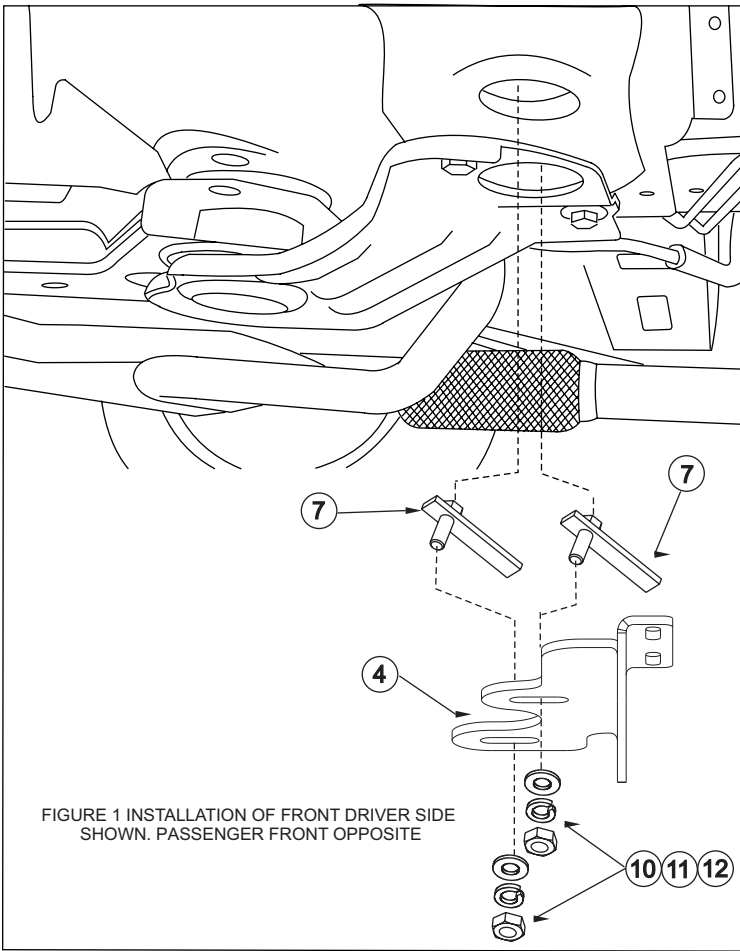


FIGURE 1 INSTALLATION OF FRONT DRIVER SIDE SHOWN. PASSENGER FRONT OPPOSITE

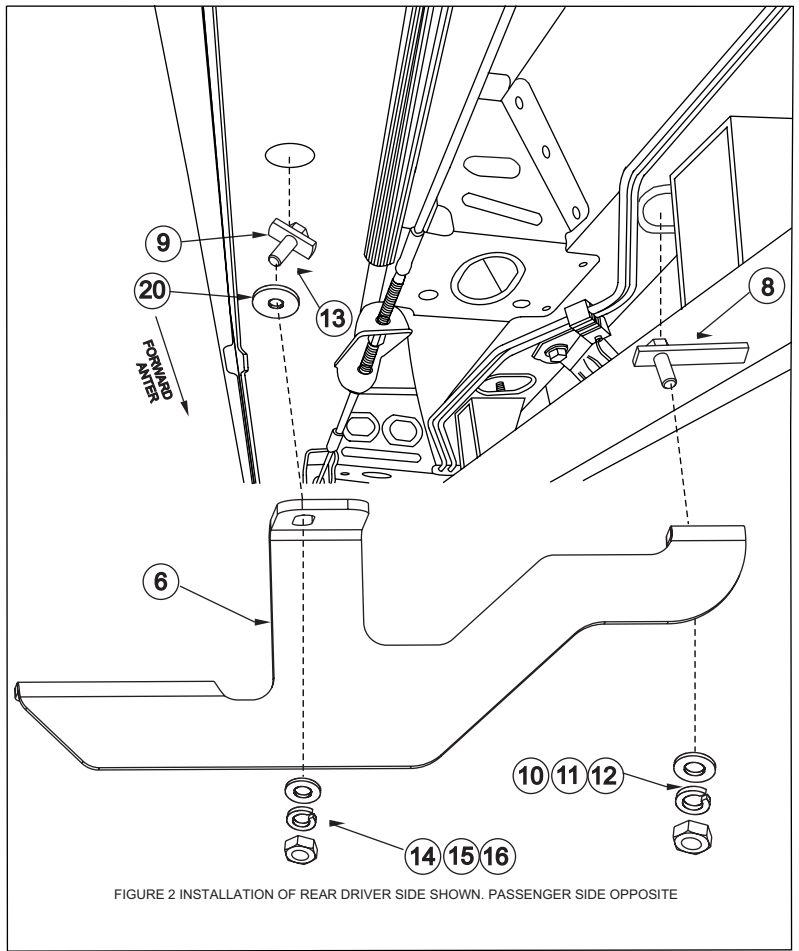


FIGURE 2 INSTALLATION OF REAR DRIVER SIDE SHOWN. PASSENGER SIDE OPPOSITE

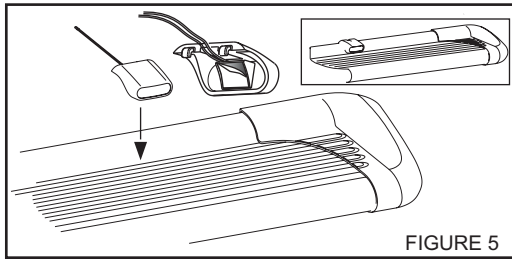


FIGURE 5

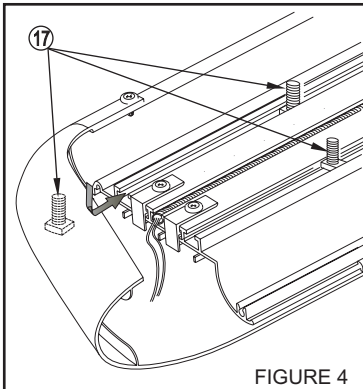


FIGURE 4

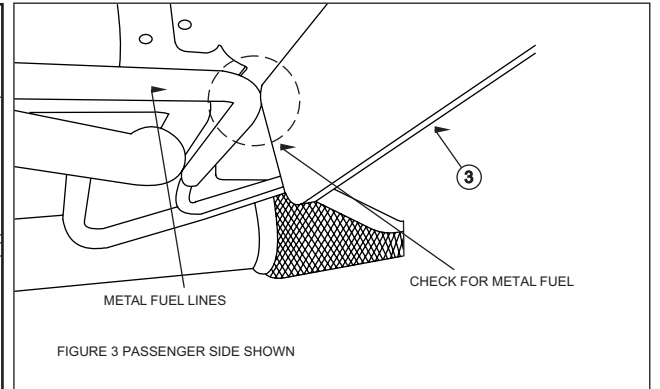


FIGURE 3 PASSENGER SIDE SHOWN

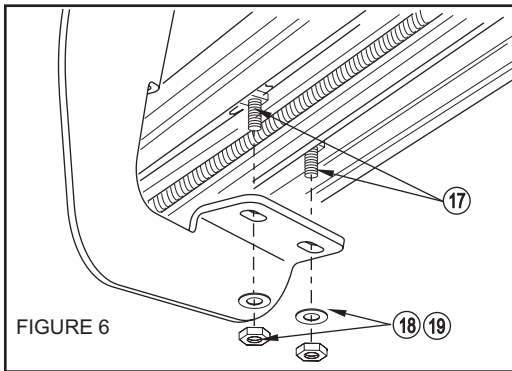


FIGURE 6

