



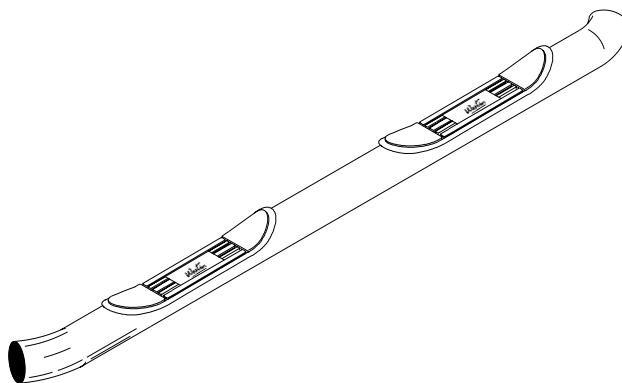
INSTALLATION INSTRUCTIONS

APPLICATION: 1996-00 TOYOTA 4-RUNNER
2/4 WHEEL DRIVE

AUTOMOTIVE PRODUCTS, INC.

STEP BAR ASSEMBLIES

25-1440
25-1445
25-1450
25-1455



ITEM	QTY	PARTS KIT CONTENTS DESCRIPTION	TOOLS REQUIRED
1	1	STEP BAR -DRIVER SIDE	5/16" HEX WRENCH (ALLEN) 3/4" SOCKET 3/4" COMBINATION WRENCH TORQUE WRENCH RATCHET
1	1	STEP BAR-PASSENGER SIDE	
2	1	BRACKET, FRONT PASSENGER	
3	1	BRACKET, FRONT DRIVER	
4	2	BRACKET, REAR PASSENGER	
5	2	BRACKET, REAR DRIVER	
6	4	1/2 -13 BOLT PLATE	
7	2	1/4" SPACER PLATE	
8	4	POLY RETAINER	
9	2	1/2-13 X 4.00" HEX HEAD BOLT	
10	8	1/2" FLAT WASHER	
11	6	1/2" LOCK WASHER	
12	6	1/2-13 HEX NUT	
13	10	3/8-16 X 1.00" BUTTON HEAD CAP SCREW	
14	10	3/8" INTERNAL TOOTH LOCK WASHER	

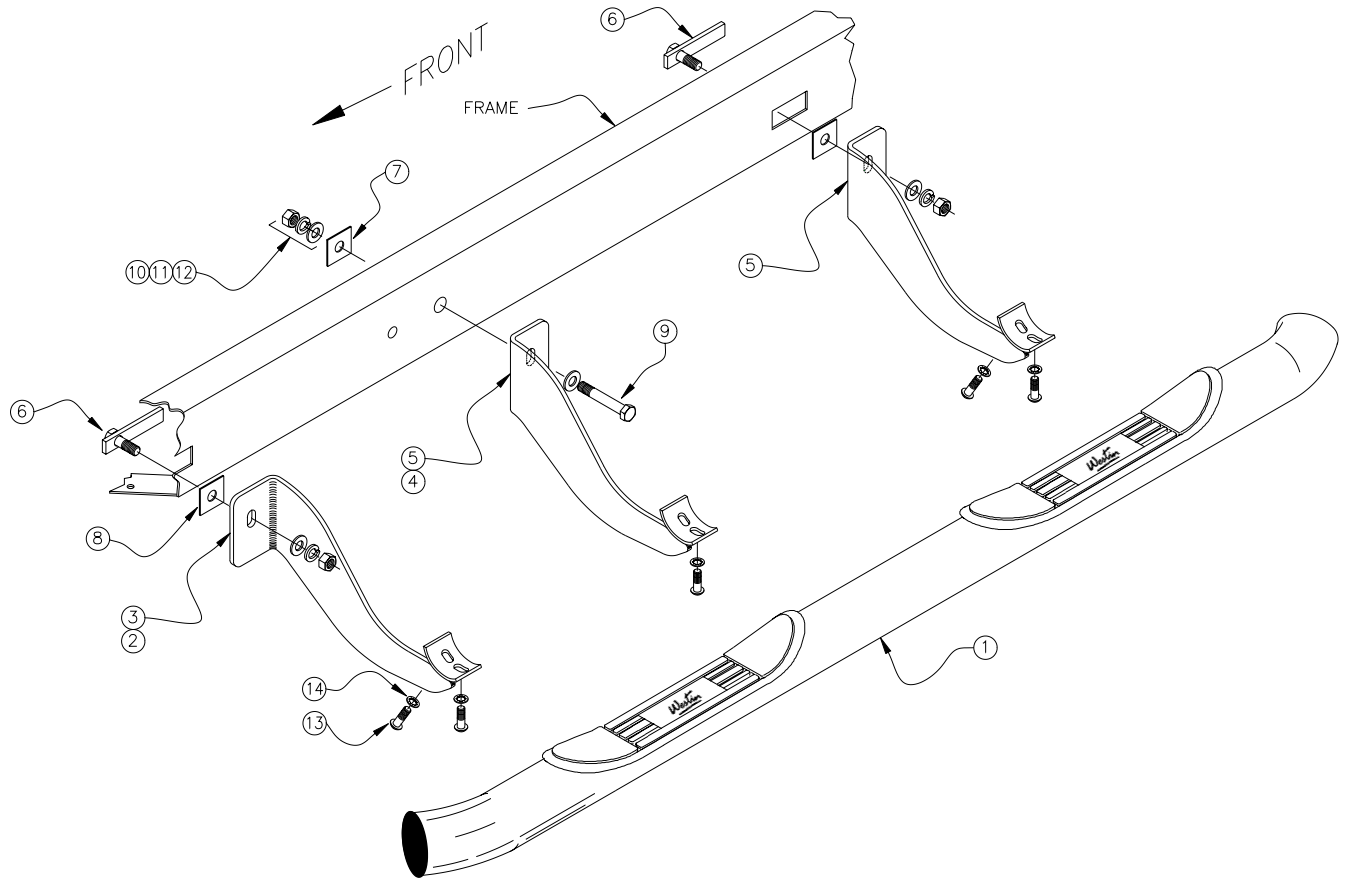
- STEP 1. Remove the contents from the box and check for any damage. Verify all parts against parts list.
- STEP 2. Read and understand instructions completely before beginning installation.
- STEP 3. Locate the rectangular holes in the frame towards the front and rear of the vehicle. Insert the 1/2-13 Bolt Plates into the holes. While holding onto the threads, place a poly retainer onto the threads to keep the plate from falling inside the frame.
- STEP 4. Determine the front and rear brackets for the side being installed. See Figure 1. Place brackets up to Bolt Plates and secure using (1) 1/2" Flat Washer, (1) 1/2" Lock Washer and (1) 1/2-13 Hex Nut per bracket. Hand Tighten.
- STEP 5. Locate the round hole through the frame. This is the second one from the front rectangular hole. See Figure 1. Secure the center bracket to frame through this hole using (1) 1/2-13 x 4.00" Hex

Bolt, (2) 1/2" Flat Washer, (1) 1/2" Lock Washer, (1) 1/4" Spacer Plate and (1) 1/2-13 Hex Nut. Hand Tighten.

STEP 6. Secure step bar tube using (5) 3/8-16 x 1.00" Button Head Cap Screw and (5) 3/8" Internal Tooth Lock Washers. Tighten and torque to 30 FT. LBS.

STEP 7. Align and level the step bar with the vehicle body. Tighten and torque bracket bolts to 65 FT. LBS. Repeat for installation of other side. NOTE: If the step bar is not rotated correctly, loosen all (5)

FIGURE 1



ASSEMBLY AND INSTALLATION VIEW OF DRIVER SIDE - PASSENGER SIDE OPPOSITE

Finish protection - Westin products have a high quality finish that must be cared for like any other exposed finish on the vehicle. Protect the finish with a non-abrasive automotive wax (pure carnauba, for example) on a regular basis. The use of cleaner wax or any compound which contains an abrasive is detrimental, as the compounds scratch the finish and open it to corrosion.