



SIGNATURE OF QUALITY

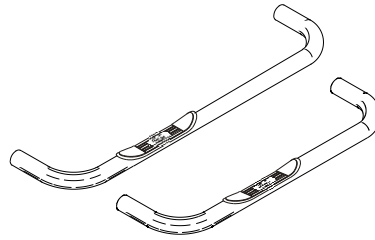
AUTOMOTIVE PRODUCTS, INC.

INSTALLATION INSTRUCTIONS

APPLICATION: 1995-03 TOYOTA TACOMA REGULAR/EXTENDED CAB 4X4

STEP BAR ASSEMBLIES

25-0745 25-0750
25-0830 25-0835



ITEM	QTY	CONTENTS	TOOLS
1	2	STEP BAR, PASSENGER AND DRIVER	3/4" SOCKET 3/4" WRENCH 9/16" SOCKET 5/16" HEX WRENCH RATCHET TORQUE WRENCH
2	2	FRONT BRACKET	
3	2	MOUNT TAB ASSEMBLY	
4	2	REAR BRACKET	
5	2	TOP REAR CLAMP ASSEMBLY	
6	2	BOTTOM REAR CLAMP ASSEMBLY	
7	2	MOUNT BAR-STRAIGHT	
8	1	MOUNT BAR-OFFSET	
9	2	POLY RETAINER	
10	2	1/2-13 X 2.00" FLAT HEAD BOLT	
11	2	1/2-13 X 2.00" HEX HEAD BOLT	
12	2	1/2-13 X 1.50" HEX HEAD BOLT	
13	8	1/2" FLAT WASHER	
14	6	1/2" LOCK WASHER	
15	4	1/2-13 HEX NUT	
16	4	3/8-16 X 1.75" HEX HEAD BOLT	
17	4	3/8" FLAT WASHER	
18	4	3/8" LOCK WASHER	

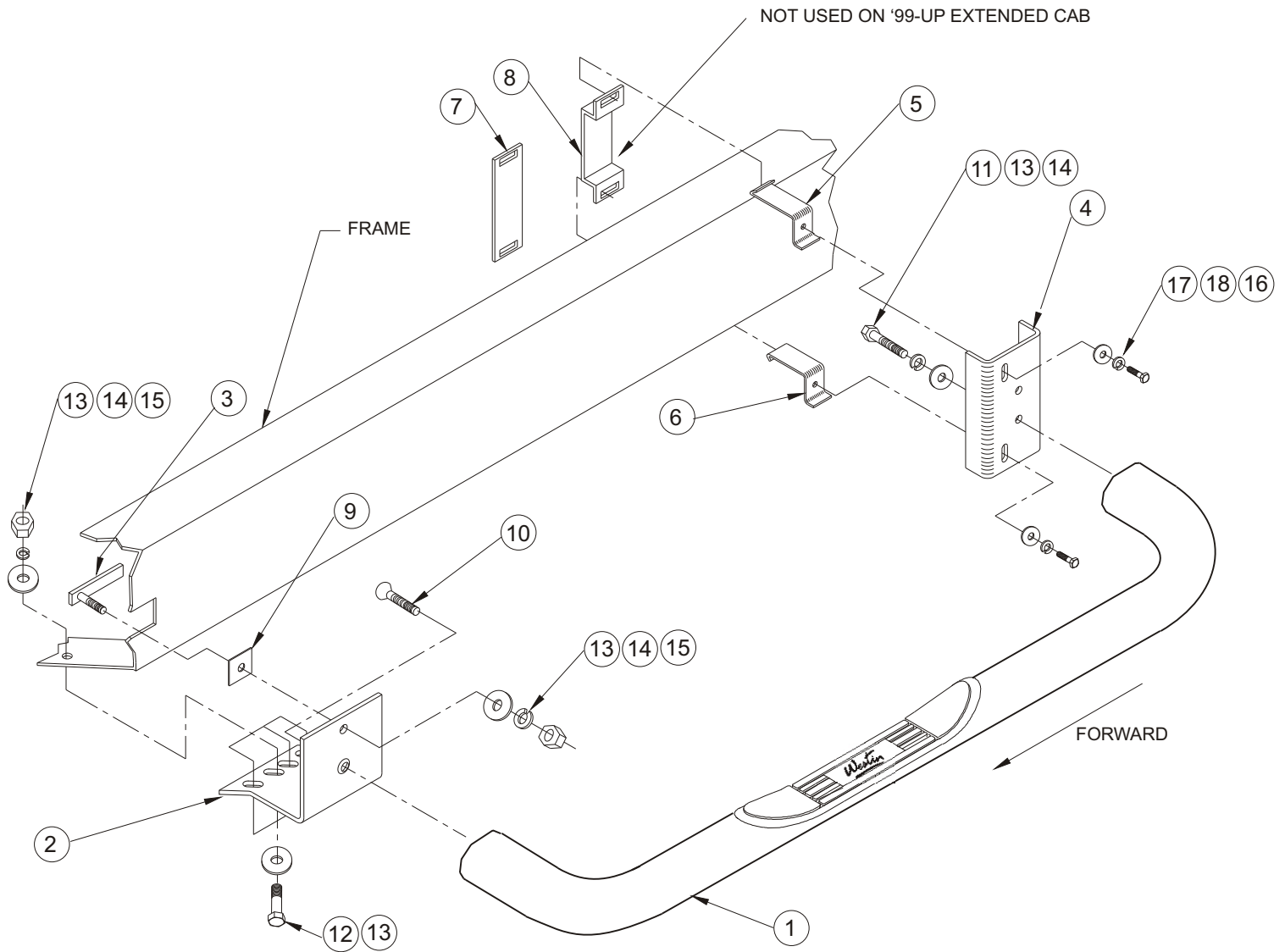
- STEP 1. Remove the contents from box and check for damage. Verify all parts are present. Read instructions completely before beginning.
- STEP 2. Install front mount tab assemblies through rectangular hole in frame as shown. Place poly retainer on bolt and thread tight against frame.
- STEP 3. Attach step bar to brackets using 1/2" fasteners as shown. **NOTE:** Use coined hole on front bracket and bottom hole on rear bracket. Make sure rear bracket is positioned so slots are towards the front of vehicle and the legs are towards the frame. Torque 1/2" flat head bolts to 50 FT.LBS. and 1/2" hex head bolts to 65 FT.LBS.
- STEP 4. Position step bar up to vehicle frame and place top hole of front bracket over front mount tab assembly bolt. Attach with 1/2" fasteners as shown. Hand tighten.
- STEP 5. Attach rear bracket to top and bottom rear clamp assemblies using 3/8" fasteners as shown. **NOTE: Regular Cab models:** Place offset mount bar against back side of frame on driver side so recessed area of bar clears brake lines. Position straight mount bar against backside of frame on passenger side. **1995-98 Extended Cab models:** Place offset mount bar against backside of frame on passenger side and straight mount bar against the backside of frame on driver side. **1999-03 Extended Cab models:** Do not use the offset mount bar. Hook top and bottom clamp assemblies through slots in straight mount bars. Hand tighten.

STEP 6. Install 1/2" fasteners through the slot in the bottom of front mount which lines up with the hole in the frame cross member as shown. **NOTE:** Slots may vary from vehicle to vehicle.

STEP 7. Make sure step bar is properly aligned with vehicle. Torque all mounting 1/2" fasteners to 65 FT.LBS.

FINISH PROTECTION

Westin products have a high quality finish that must be cared for like any other exposed finish on the vehicle. Protect the finish with a non-abrasive automotive wax, (e.g. Pure Carnauba) on a regular basis. The use of any soap, polish or wax that contains an abrasive is detrimental, as the compounds scratch the finish and open it to corrosion.



INSTALLATION VIEW OF DRIVER SIDE SHOWN, PASSENGER SIDE OPPOSITE