



SIGNATURE OF QUALITY

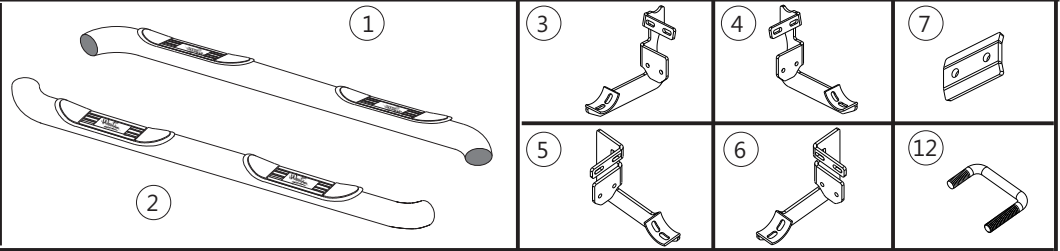
AUTOMOTIVE PRODUCTS, INC.

# INSTALLATION INSTRUCTIONS

APPLICATION: 2004-12 CHEVY COLORADO/GMC CANYON CREW CAB  
2006-07 ISUZU i-370 CREW CAB

STEP BAR ASSEMBLIES

23-3150    23-3155



ITEM	QTY	CONTENTS	TOOLS
1,2	2	STEP BAR, PASSENGER (1) AND DRIVER (2)	13mm SOCKET 13mm DEEP WELL SOCKET 13mm WRENCH 16 mm WRENCH RATCHET TORQUE WRENCH
3	2	FRONT/CENTER PASSENGER BRACKET	
4	2	FRONT/CENTER DRIVER BRACKET	
5,6	2	REAR BRACKET, PASSENGER (5) AND DRIVER (6)	
7	6	BACKING PLATE	
8	12	M8 HEX HEAD BOLT	
9	36	M8 FLAT WASHER	
10	24	M8 LOCK WASHER	
11	24	M8 HEX NUT	
12	6	M8 U-BOLT	
13	12	M10 HEX HEAD BOLT	
14	12	M10 INTERNAL TOOTH LOCK WASHER	
15	12	M10 FLAT WASHERS	

- STEP 1. Remove the contents from box and check for damage. Verify all parts are present. Read instructions completely before beginning.
- STEP 2. Determine passenger and driver brackets. NOTE: Front and center brackets are the same.
- STEP 3. Locate the round holes on rocker panel for bracket installation. Install a M8 hex nut on the longer end of u-bolt. Insert u-bolt through the first hole and out through the second hole. SEE DETAIL A. Install a M8 hex nut on shorter end of u-bolt after it comes through the second hole in the rocker panel. This will help prevent the u-bolt from falling into the rocker panel. Remove the hex nut on the longer end of the u-bolt and position the top flange of the bracket onto the longer end of the u-bolt. Secure with M8 fasteners as shown. Leave loose. Remove the hex nut on the shorter end of the u-bolt, position bracket and secure with M8 fasteners as shown. SEE FIGURE 1. Repeat for all brackets.
- STEP 4. Secure the backing plates to the brackets using M8 fasteners as shown and leave loose. The backing plate will clamp the bracket and pinch weld together. SEE FIGURE 1 AND DETAIL B.
- STEP 5. Attach driver side step bar to cradles with the Westin logo facing outward. The crew cab step bar has one step pad closer to the bend than the other step pad. The step pad closest to the bend will go to the rear of the vehicle. Secure with M10 hex head bolt internal tooth lock washer, and flat washer as shown. Repeat for passenger side. Leave loose. SEE FIGURE 2.
- STEP 6. Make sure step bars and brackets are properly aligned and tighten fasteners. Recommended torque values are 19 FT.LBS. for M10

SEE DETAIL A

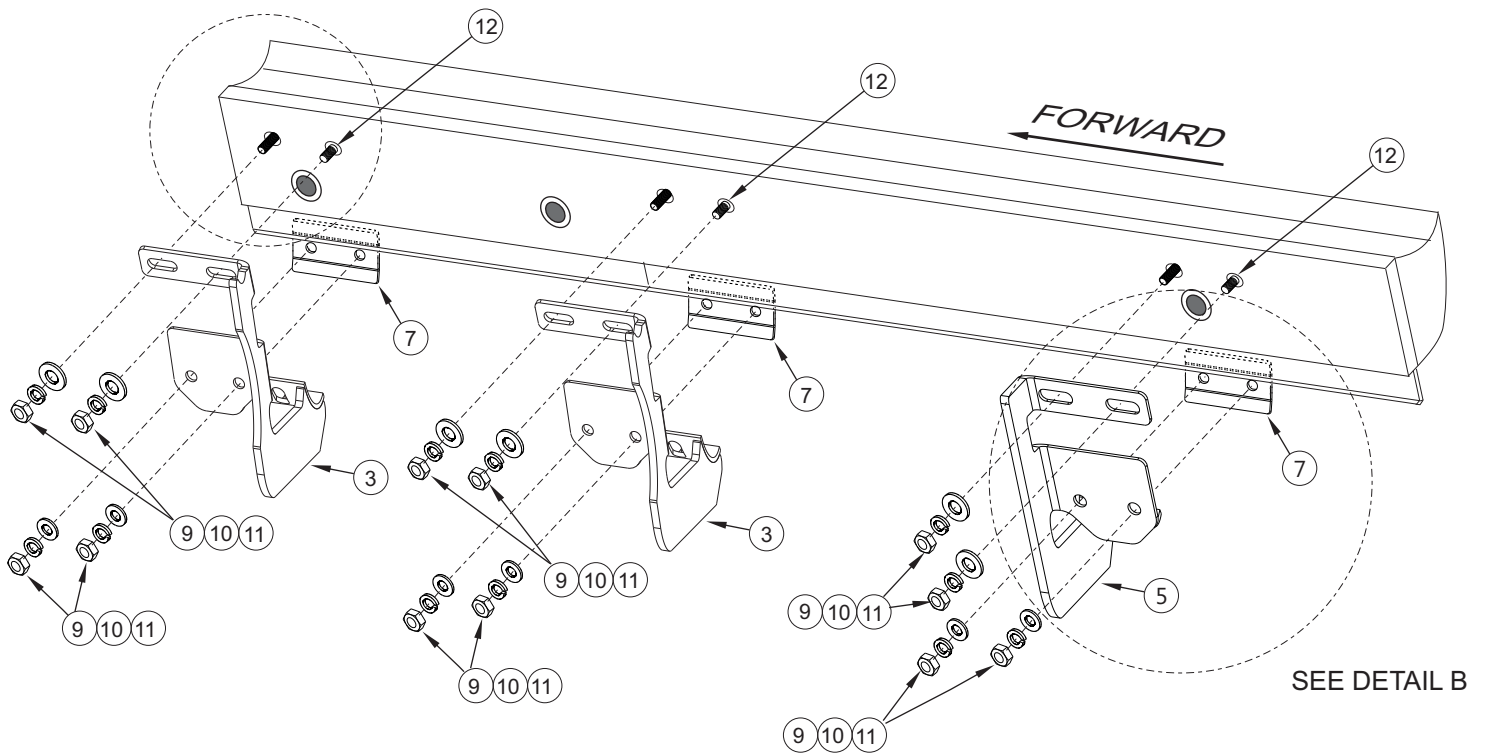
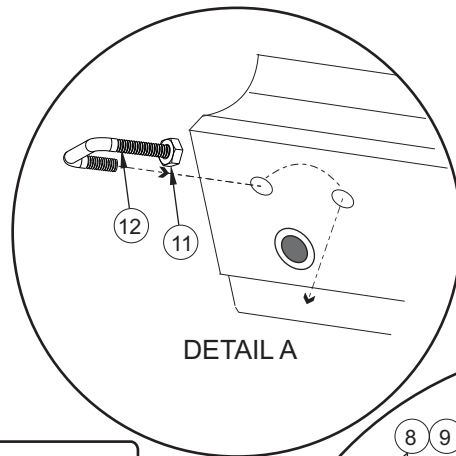


FIGURE 1 INSTALLATION VIEW OF PASSENGER SIDE SHOWN, DRIVER SIDE OPPOSITE



DETAIL A

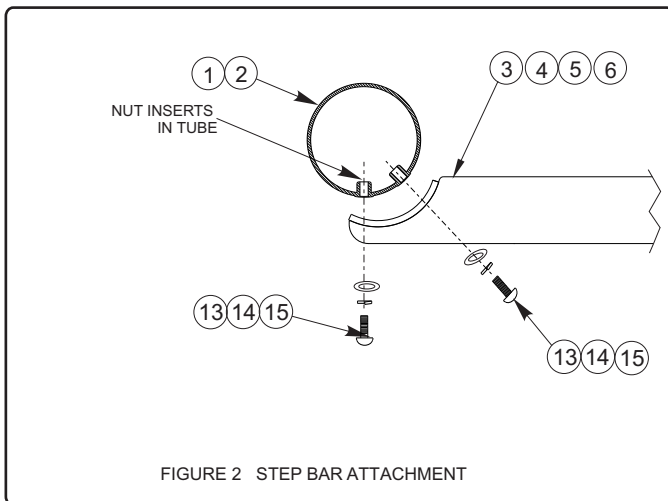
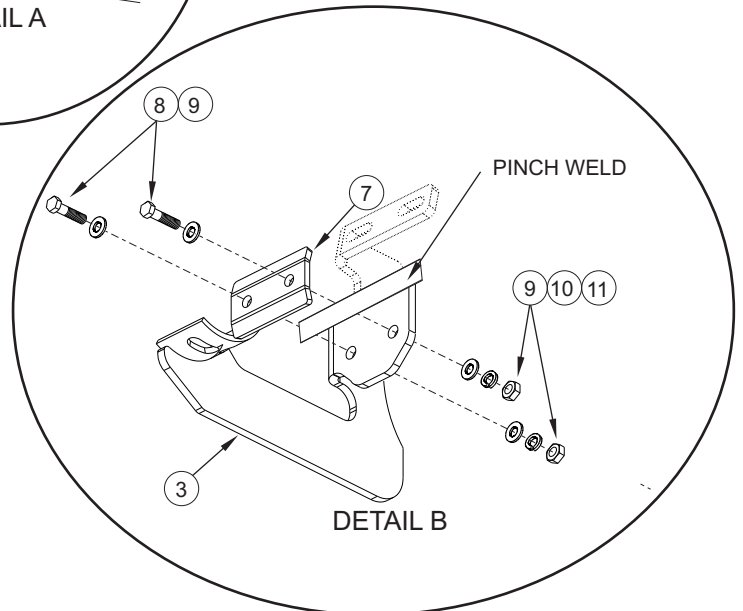


FIGURE 2 STEP BAR ATTACHMENT



DETAIL B

Choose reliable running boards offered on our website.