



# INSTALLATION INSTRUCTIONS

APPLICATION: 09-14 DODGE RAM 1500  
 10-14 DODGE RAM 2500/3500 QUAD/CREW CAB  
 APP PART # 22-1905 4/6" OVAL MOUNT KIT

AUTOMOTIVE PRODUCTS, INC.

ITEM	QUANTITY	DESCRIPTION	TOOLS NEEDED
1	2	STEP BARS	16MM SOCKET
2	2	MOUNTING BRACKET (DRIVERS SIDE FRONT/PASSENGER SIDE FRONT) (BRACKET STAMPED 22-1906)	18MM SOCKET
3	3	MOUNTING BRACKET (DRIVERS SIDE CENTER/ PASSENGER SIDE CENTER/REAR) (BRACKET STAMPED 22-1907)	9/16 SOCKET
4	1	MOUNTING BRACKET (DRIVERS SIDE REAR) (BRACKET STAMPED 22-1909)	
5	6	M10 NUT/M12 BOLT PLATES	10MM SOCKET
6	6	M10 HEX HEAD BOLTS	TORQUE WRENCH
7	6	M10 LOCK WASHERS	RATCHET
8	6	M10 FLAT WASHERS	
9	6	M12 HEX NUTS	
10	6	M12 LOCK WASHERS	
11	6	M12 FLAT WASHERS	
12	6	M6 BOLT PLATES (INCLUDED WITH STEP BARS)	
13	24	M6 FLAT WASHERS (INCLUDED WITH STEP BARS)	
14	24	M6 NYLOCK NUTS (INCLUDED WITH STEP BARS)	
15	6	3/8" RIV-CERTS	
16	6	3/8" HEX HEAD BOLTS	
17	6	3/8" LOCK WASHERS	
18	6	3/8" FLAT WASHERS	
19	6	PLASTIC RETAINERS	

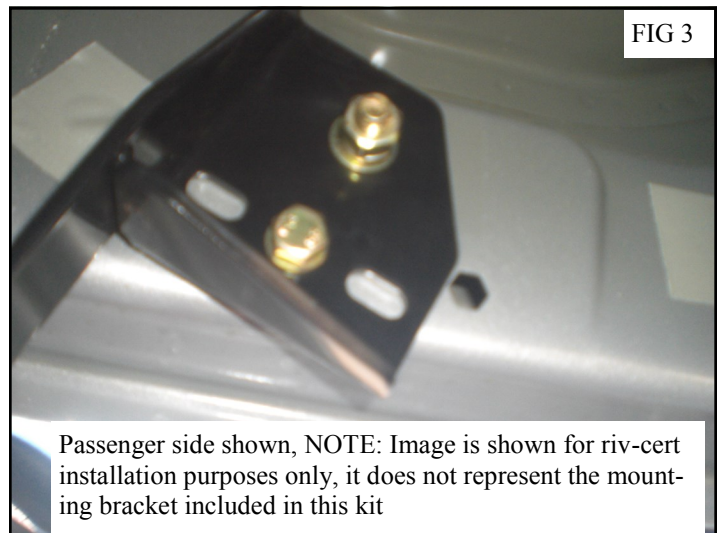
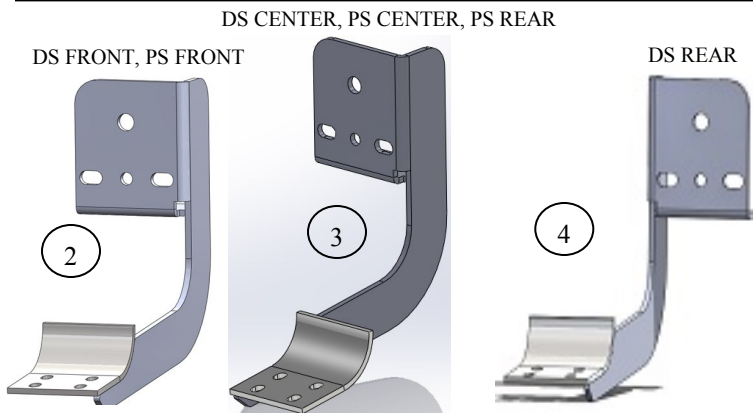
**ANTI-SEIZE LUBRICANT MUST BE USED ON ALL STAINLESS STEEL FASTENERS TO PREVENT THREAD DAMAGE AND GALLING**

1. Remove contents from box, verify if all parts listed are present and free from damage. Carefully read and understand all instructions before attempting installation.
2. Starting on the drivers side of the vehicle, locate the square tape covering the factory holes in the rocker panel FIG 1. Insert (1) M12 bolt plate into the rocker panel and thread on (1) plastic retainer to the M12 bolt as to keep it from falling into the rocker panel FIG 2.
3. Take (1) 3/8" riv-cert and place it into the lower left hexagonal hole FIG 2. To install the riv-cert take the drivers side front mounting bracket and attach it to the previously installed M12 bolt/M10 nut plate Using (1) M12 flat washer, (1) M12 lock washer, and (1) M12 hex nut. Locate the circular hole in the middle of the mounting bracket and position it over the riv-cert. Take (1) 3/8" hex head bolt and (1) 3/8" flat washer and carefully thread it through the circular hole into the riv-cert, then tighten the 3/8" hex head bolt fully this will seat the riv-cert into the rocker panel and the riv-cert is then permanently installed FIG 3. Remove the M10 hex head bolt and flat washer and move the front mounting bracket into its normal position. Attach the mounting bracket to the installed riv-cert and M12 bolt/ M10 nut plate using (2) M10 hex head bolts, (2) M10 lock washers, and (2) M10 flat washers FIG 4. Do not fully tighten at this time.
4. Repeat step 2-3 for the rest of the drivers and passenger side brackets.

5. To install oval step tubes, use mounting hardware packaged with step tubes. Insert M6 bolt plates into the oval tube as shown . Place bolts through the corresponding mount holes into the brackets .Attach oval tubes to brackets using the corresponding M6 hardware. ( Fig ). Leave loose. Place the oval tube so that long step pad is forward and the end cap screws are facing inward.
6. Align and adjust the step bars as needed then fully tighten all hardware at this time. Torque all M12 hardware to 45-50 ft lbs, M10 to 30-35 ft lbs, and M6 to 10-15 ft lbs.

#### CARE INSTRUCTIONS

- REGULAR WAXING IS RECOMMENDED. DO NOT USE ANY TYPE OF POLISH OR WAX THAT MAY CONTAIN ABRASIVES
- STAINLESS STEEL PRODUCTS CAN BE CLEANED WITH MILD SOAP AND WATER. STAINLESS STEEL POLISH SHOULD BE USED TO POLISH SMALL SCRATCHES.
- GLOSS BLACK FINISHES SHOULD BE CLEANED WITH MILD SOAP AND WATER



Passenger side shown, NOTE: Image is shown for riv-cert installation purposes only, it does not represent the mounting bracket included in this kit

